

## Product datasheet for **MG215486**

### Lmo7 (NM\_201529) Mouse Tagged ORF Clone

#### Product data:

**Product Type:** Expression Plasmids  
**Product Name:** Lmo7 (NM\_201529) Mouse Tagged ORF Clone  
**Tag:** TurboGFP  
**Symbol:** Lmo7  
**Synonyms:** C78582; FBXO20; Gm914; mKIAA0858  
**Mammalian Cell Selection:** Neomycin  
**Vector:** pCMV6-AC-GFP (PS100010)  
**E. coli Selection:** Ampicillin (100 ug/mL)  
**ORF Nucleotide Sequence:** >MG215486 representing NM\_201529  
Red=Cloning site Blue=ORF Green=Tags(s)

TTTTGTAATACGACTCACTATAGGGCGGCCGGAATTCGTCGACTGGATCCGGTACCGAGGAGATCTGCC  
GCC**CGATCGCC**

ATGGAAGGGATGGAGGACGCCGAGGCCGATTGCTCTGTTGCATTGCGAGAGGCTCAGAGATGGGTGGAGG  
CTGTAACAGAGAATTTTGAACAACGGATTTTCGAGCCTCTAGAAAATGGTGTCTGTTGTGCGA  
CTTGATTAATAAGCTCAAACCTGGCGTCGTTAAGAAGATCAATAGACTGTCTACCCCAATAGCAGGTTT  
GATAACATAAATGTTTTTTGAGAGCTTGTGAACAGATTGGATTGAAAGAAGCCAGCTTTTTTCATCCGG  
GGGATCTACAGGACTTATCAAACCGAGTACCCTCAAGCAAGAAGAGACTGACAGGAGACTGAAAAATGT  
TTTGATAACTTTGACTGGCTGGGAAGAAAAGCACAAGTAACCCCTACTATAATGGTCCCTATCTCAAT  
TTGAAAGCTTTTGGAGACTCTTTAGGGCAAGCTTTGACTAAGGCACTTGAAGATTCCAGCTGCCTGAAAA  
GAAGTGGCCGGGACAGTGGCTACGGGGACATCTGGTGTCTGACAGAGGAGAATTTCTGCCCTCCAGG  
TAGCCACAGAAGGGAAGATTCTTTGAGAGCTTGGACTCGCTGGGGTCCAGATCTCTGACCAGCTGTTCC  
TCAGACTTCACTCTGAGAGTTGGGAAGGAGTTGCGAAAGTGACATCGATTGGGAATTTACATTCAAAA  
TGCAGGATTACAACAAGATGATATGTCCTACCGAAGGATTTTCAGCCATTGAGCCAAAGTCAGCTCTCCC  
GTTCAATCGTTTTCTTGGCAACAAAAGCAAGCAGCCGTCCTATGTCCAGCACCTTTGAGGAAGAAGAGG  
CCAGACAAACACGAGGATAACAGGAGGAGCTGGCAAGCCGGTCTACACAGAAAACAGACGGAACATTTT  
CAAGTACCCAGAGGAGAACCTGGGGTCCCAAGATGGAGACTGGCACACAGTCCAAGAAAACCTCCACCTC  
TTCTTGGTGTGTAGAAGAGGAAGAGGAAAAGCTCACGCGCATGCCCAACATTGTGAAGGATGATCTGTAT  
GTGCGGAAGCTTAGCCCCGTCATGCCAAGTCCAGGGAGCTCTTTTGATCAGTTTCTTCCCAAATGTTGGA  
CTCCAGAAGATATGAACTGGAAAAAATTAAGAGAGACTTATAAGCCATGGTATAAGGAATTTTCAGGG  
ATTCAGTCAGTTTTTATTGCTTCAGGCCCTCCAAACCTACTCTGATGACATCTTGTCTCGGAAACAAGT  
GTCAAACCTCGATCCTACCTCTGGCCCCAGGCTCATAACTCGCAGGAAGAATCGCTCTCCCGCACCAGGCT  
ATCGAGCCATGACCTTGGAGCTGCCAGCCCTAGATCCCGACTTAGAAAATGATGATTTCTTTGTCAGAAA  
AACAGGGGCTTCCATGCAAATCCGTGTGTCCTTCGAGCCTTTGAAGACTTTAGAAGTTTCTCGGAGCCA



[View online »](#)

GACGATGCCGTGGAACGAGATATAATTTTGCAGTGTCCGGGAAGGTGAACTCGTACTTCCAGATTTAGAAA  
 AGGATGATATGATTGTCCGCAGGATTCCAGCTCAGAAGAAAGAAGTGCCCTTTCTGGGGCCCCGGATAG  
 GTACCAGCCAGTCCCTTTCCCTGAACCTGGACCCTACCTCCAGAAATCCAAGCGAAGTTTCTCTGTG  
 CTCGAAAGGACACGCCACCCAAAGAACAAGCAGCGGCTGTAGAGTGTAGTCCCTTCTATCGACAGA  
 AGAAAGACGACATGTTGGCTCGCAAGATCCAGTCTTGAAGCTGGGGACTGCTGTACCTCCCATCAGTTT  
 CAAGCTGGCCCCCTGCAGCGAGGCCGACCTGCAGAAAGTGGAGGCCATCTGGGAGGCCAGCAGGCTTAGG  
 CACAGGAAGCGGCTGATGGTTGAGAGACTCTTTCAAAGATCTATGGTGAGAATGGGAGCAAGTCCATGA  
 GCGATGTACGCGCAGAGGATGTTTCAAGACTGCGTCAGGTGCGCTACGAGGAGATGCAGAAAATAAATC  
 CCAGCTGAAAGAACAAGATCAGAAATGGCAGGATGACCTTGCAAAATGGA AAAACCCGCCGGAAGAGTTAC  
 ACTTCAGATCTGCAGAAGAAAAAGGAAGAGAGGGGAAGAGATTGAGAAGCAGGCACTGGAGAAGTCTGACC  
 GCAGCTCCAAGACATTTAGGGAAATGCTGCAGGACAGGGAAATCTCGAGGTTCTACAGTTACGCTTTGGAG  
 GAGGACCTATTCTCTGATGACATCCTCGATGATGGAGTGTCCCTCTACAGTACTCTGTGAGAACT  
 AGTTACCAGAGCGAGAGACTAGAAGATGAGGCAAGAGCGCATCCTGCTGAGATGCCCAAAGAAGATTCCA  
 CAACATTTGCAAAATAGAGAGGACAGTGTAGTAGCTGAGACTCAGCTTGTCTCACAGTCTGAAGAGCA  
 ACGTCTGGCCCCCTCTCCTTCTGAGGAACCGGCCAGGCTCTGGATCTTCTGCAGAACCGCACCAGGCC  
 CCGTTGCTGTCCAGAAACCGCCGACCCCTTTGCCTTCCGAGGAACACACCAGGCCTCTATCTT  
 CTACACTACAGCGTCCATCCTCACTCTTCTCAGCAGTATGGAGTACAAAGAGCAGAGTCCACTCGGAT  
 TTCAGTCTCTCCCTAGAAAGTTACCAGAGAACCAGATACAGCCAGGTTAACATCTGTGGTACAGCGAGA  
 CCTTTTGGCAGATCTTCAAGGGGAATCTCCTCACTGCCAGATCTACACGATGGATGATGGCTGGAAAT  
 ACAACGGAGATGTTGAAGTTGTCAAGAGAGAGCAACTCGATTTGGGCAGAGCCACTGGCCCGAAGCCTGA  
 CTCCAGCCACTTTATTTGGGCTCAGCCAGTGAGAAGGAGGTATAGCCACAGAAGATGTGGCAAGCTTG  
 TCCTCTCCCACTCCCTTCTCATCTCTCCTCCACGACCGGGCAGTCTTCCAAAGCCACGTTCTCAT  
 CAATGTCTGGTTTGGATTCAAGTGTACTCTGGAGAAGGAAGAGGCTCACCATTGAGGGAAAGTTCCAG  
 GTCCCTGGATCAGTTCAGCGATATGAGAGTCAAGATAAAACAGACGCCCGGGAACAAACCTGTCTTTGGG  
 TTTACGATAAAATGGGATATTTCTGGGATCTTCTGATCAGTCAAGCAAGGTAGCCAGCAGAATTTT  
 CTCAGTGCAGGTAGATGATGAAATTTGCCATCAATAACACCAAGTTTTTATATAAGGATACAAAAAA  
 GTGGGAGGAAGTTATGGCAACGCCAAGAAACTGGAACTTAGTGATGGACGTCCGGCCTTACGGAAAG  
 TCTGGTTCATCTGAAACAAAGTGGATCGATACAACATCAGGAATTTACAAGTCAAGTCTTCAAGTT  
 TATCAGTCAACTGATTTCTCTGAAAGCCTTCAAGTCTTATACTGAATCCAAAGAAGTCAATGGAAT  
 TCACGAGGAAAGTAACCCCTTTGATTCAAAGCATCAGAAATCCATTTCTTTGAAAAATTTAAAAAGCGA  
 TACAATTTTTTGAACAAGGAAGCTCGGATTCTGTGGCCCCGATCTTCCAGTTCCAACCCCTCAGTGCCC  
 CGAGTCCGCTGGGCTTGGGATCAAGAGGAGGAGAGACGGAGGCAGGAGCGGTGGCAGAAAGAGCAAGATCG  
 CCTATTGCAGGAAAAATACCAGCGTGAGCAGGAGAAGCTGAGGGAGGAGTGGCAGAGAGCCAAACAGGAG  
 GCGGAGAGAGAGAATCCAAGTACCTGGATGAGGAGCTGATGGTCTAAATTTCAACAGCATTTCTCTGA  
 CCTCCCGGAGCCTGTGGCCGCCACCTGGGAAGCCACGTGGAGTGAAGGGTCCAAGTCTCTGGACAGCGA  
 AGGCACCCGAGCGGGAGAGGAGGACAGGGGACAGCTGGAAGACGATGCTGTGATGAGGACCAAAGTCAAG  
 AAGCTGCAGGAAGTGTGAGCAGGAGAAGAAACCGAAGGAGCAAGAGGCTCAGGAAGAGGAGCGCCGCAAGC  
 AGCGGGAGGCCAGGCCCTGGGCAGAGGCAGAAGCTAAGGCTTGGCGGAGGCCAGGCTCGGGCAGAGGC  
 AGAAGCTAAGGCTCGGGCGGAGGCCAGGCCCGGGCAGAGGCTGAGGCTCAAAAACGAGCTGAAGTCTCAG  
 AAGCTCCAGGCAGAGAGGGAACGTGAAACGTCCGTCAAAAATATACCAGTACCGAAGGCCATTGATTCTCT  
 ACGACCTACCAAAGAGAGAAGACGACACTTCAAGGATGCTTCAACTGACAGGAGTAAATCAAGTCTAC  
 TACGGAATAAATGACCCCTCATAGAGAAAAATGGAAGCAGCAAAATATTAGAGAGAATTTGGGCCACT  
 AGCTTTTACATAGGAGTTCTAAGAAGGATCAAGCCCCCTCAGAAGCAGAGTTGGAGAGACGCAAAATCC  
 TTCAGGAAATGAGGAAGAGAATCTCTCCACAATGACAACAGCTGGATCCGACAGCGCAGGCCAGTGT  
 GAACAAGGAGCCCATCTGCCTGCCTGGGATCATGAGGAGAGGGGAGTCTCTGGACAATCTGGATTCCCAG  
 CGGCCGGTCTTGGAGGAGTCCCCTTGGCACAGCCAGCCTGCCGGGTCTATGCGTCTTCTCTGTCC  
 AGGACTTCAAGTCCGCCCCACCTCAGCTGTTGTCTACATCAAACCGTGCCTACATGCGGAACCCATCCTC  
 TCGCGTGCACCTCCAGCCGGCTCTGTGAAGACCTCCCCAGGGTCTCCCTCTCCAGCAGCCATTCCCTT  
 TCCATGTCACAGTCAGGCTCTCAGCTACGGAATAGGTCAGTGTGAGTGGGAAGCGTGTGTGCTCCTACTGTA  
 ATAACATTTCTGGGCAAAGGAGCCGCCATGATCATCGAGACCTGGGTCTTTCTTATCATTACATTGTTT  
 TAAGTGTGTCTCTGTGGGTGTGACCTCGGAGGCTCTTCTCAGGAGCTGAAGTCAAGTCCGAAACCCAC  
 CAACTCTACTGCAATGACTGCTATCTCCGATTCAAATCTGGACGGCAACCCGCTATG

ACGCGTACGCGGCCGCTCGAG - GFP Tag - GTTTAA

**Protein Sequence:**

>MG215486 representing NM\_201529  
 Red=Cloning site Green=Tags(s)

```
MEGMEDIAEDCSVAFAEAQRWVEAVTEKNFETDFRASLENGVLLCDLINKLKPGVVKKINRLSTPIAGL
DNINVFLRACEQIGLKEAQLFHPGDLQDLNVRVTVKQEETDRRLKNVLTLYWLGRKAQSNPYNGPYLN
LKAFETLLGQALTKALEDSCLKRSGRDSGYGDIWCPDRGEFPAPPGSHRREDSFESLDSLGRSRLTSCS
SDFTLRVKGEGCESDIDWEFTFKMQDYNDKDDMSYRRISAIEPKSALPFNRFLPNKSKQPSYVPAPLRKKR
PDKHEDNRRSWASPVYTEDGTFSSTQRRTWGPKMETWHTVQETSTSSWCVEEEEEELTRMPNIVKDDLY
VRKLSVMPSPGSSFDQFLPKCWTPEDMNWKKIKRETYKPYWKEFGFSQFLLQLALQTYSDDILSSETS
VKLDPTSGPRLITRRKNRSPAGYRAHDELELPALDPLENDFFVRKGTAFHANPCVLRAFEDFRSFSSEP
DDAVERDIIILQCREGELVLPDLEKDDMIVRRIPAQKKEVPLSGAPDRYQVPVFPPEWTLPEIQAKFLSV
LERTRPPKEQSSGCRVLPVSYRQKDDMLARKIQSWKLGTAVPPISFKPGPCSEADLQKWEAIWEASRLR
HRKRLMVERLFQKIYGENGSKMSDVSVAEDVQNLQVRYEEMQIKSQLKEQDQKWQDDLAKWKNRRKSY
TSDLQKKKEEREEIEKQALEKSDRSSKTFREMLQDRESRGSTVTSWRRTYSSDDILDGVLPPVTLSET
SYQSERLEDEARAHPAEMPKESTTFANREDSVVAETQLASHSPEEQRLAPSPSEEPQASGSSAEPHQA
PLLSTEPRTPLPSEEPHQASSLTQRPSLSSQSWSTRAESTRISASLPRSYQRTDARLTSVVTAR
PFGTSSRGISSLPRSYTMDGKWNVDVEVVKREQLDLGRATGPKPDSSHFISGSASEKEVIATEDVASL
SSPTLPSSSLSHDRAVSSKATFSSMSGLSDVSDSGEGRGSPLREVSRLDQFSDMRVSIINQTPGNKPVFG
FTIKWDISGIFVASVEQSPAEFSQLQVDEILAINNTKFSYKDTKKWEEVMANAQTGNLYMDVRRYGG
SGSSETKWIDTTSGIYNSDKSSLSVTTFSESLSQSPYTESKEVNGIHEESNPFDSKASESISLKNLKR
SQFFEQGSSDSVAPDLPVPTLSAPSRWAWDQEEERRRQERWQKEQDRLLQEKYQREQEKLREEWQRAQQE
AERENSKYLDEELMVLNSNSISLTSREPVAATWEATWSEGSKSLDSEGRAGEEDRGQLEDDAVYEDQSQ
KLQLELEQEKKRKEQEAQEEERRKQREAWAEAEAKAWAEAQARAEAEAKARAEAQARAEAEAKRAEAQ
KLQAERERETSVKIYQYRRPIDSYDLPKREDDTSGMLPTDRSKSRSTTELNDPLIEKNGSSKYSERIGAT
SFSHRSSKKDQAPSEALERQQILQEMRKRTSLHNDNSWIRQRSASVNKEPICLPGIMRRGESLNDLDSQ
RPGSWRQSPWHSQFAGVYASSSVQDFSRPPPQLLSTSNRAYMRNPSSAVPPPAGSVKTPSGSPSPRSHSP
SMSQSGSLRNRSVSGKRVCSYCNNILGKGAAMIETLGLSYHLHCFKCVSCGCDLGGSSSGAEVIRNH
QLYCNDCYLRFKSGRPTAM
```

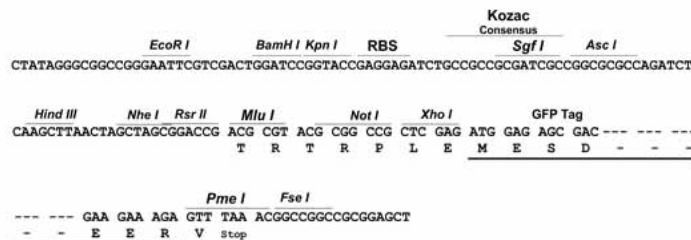
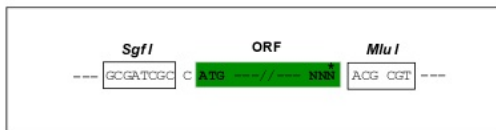
TRTRPLE - GFP Tag - V

**Restriction Sites:**

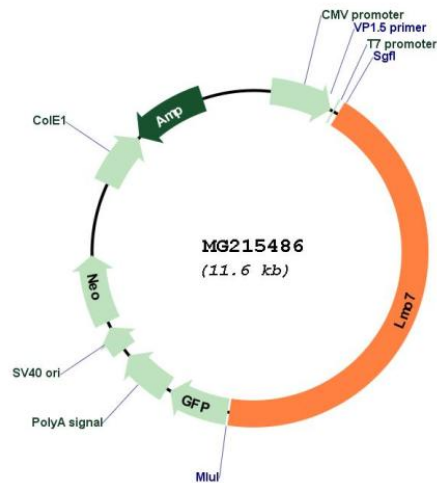
SgfI-MluI

**Cloning Scheme:**

Cloning sites used for ORF Shuttling:



Plasmid Map:



ACCN: NM\_201529

ORF Size: 5097 bp

OTI Disclaimer: The molecular sequence of this clone aligns with the gene accession number as a point of reference only. However, individual transcript sequences of the same gene can differ through naturally occurring variations (e.g. polymorphisms), each with its own valid existence. This clone is substantially in agreement with the reference, but a complete review of all prevailing variants is recommended prior to use. [More info](#)

OTI Annotation: This clone was engineered to express the complete ORF with an expression tag. Expression varies depending on the nature of the gene.

|                               |   |
|-------------------------------|---|
| <b>Components:</b>            | The ORF clone is ion-exchange column purified and shipped in a 2D barcoded Matrix tube containing 10ug of transfection-ready, dried plasmid DNA (reconstitute with 100 ul of water).  |
| <b>Reconstitution Method:</b> | <ol style="list-style-type: none"><li>1. Centrifuge at 5,000xg for 5min.</li><li>2. Carefully open the tube and add 100ul of sterile water to dissolve the DNA.</li><li>3. Close the tube and incubate for 10 minutes at room temperature.</li><li>4. Briefly vortex the tube and then do a quick spin (less than 5000xg) to concentrate the liquid at the bottom.</li><li>5. Store the suspended plasmid at -20°C. The DNA is stable for at least one year from date of shipping when stored at -20°C.</li></ol> |
| <b>RefSeq:</b>                | <u><a href="#">NM_201529.2</a></u> , <u><a href="#">NP_963287.2</a></u>   |
| <b>RefSeq Size:</b>           | 6123 bp   |
| <b>RefSeq ORF:</b>            | 5100 bp   |
| <b>Locus ID:</b>              | 380928  |
| <b>Cytogenetics:</b>          | 14 50.9 cM  |