

Product datasheet for **MG215478**

Mgam (NM_001171003) Mouse Tagged ORF Clone

Product data:

Product Type:	Expression Plasmids
Product Name:	Mgam (NM_001171003) Mouse Tagged ORF Clone
Tag:	TurboGFP
Symbol:	Mgam
Synonyms:	6030407P20Rik; MGA
Mammalian Cell Selection:	Neomycin
Vector:	pCMV6-AC-GFP (PS100010)
E. coli Selection:	Ampicillin (100 ug/mL)
ORF Nucleotide Sequence:	>MG215478 representing NM_001171003 Red=Cloning site Blue=ORF Green=Tags(s)

TTTTGTAATACGACTCACTATAGGGCGGCCGGAATTCGTCGACTGGATCCGGTACCGAGGAGATCTGCC
GCC**CGATCGCC**

ATGGCGGGACGGAGGTTTAAAGAAGTTCAGCAAGCTGGAGCTTGTCTCATTGTTCTGCTGCTTGTCTGT
TCATCATCGCGGTGGTTCTAATTGTGCTCTTAGCCAACCTCGACTCCAGAAAATGCCATAGGTGCTGAAAC
AACTGGCACTCCAGACTACAGTCACCAGGACTCTTAACCTCCCAATTGCCAGTGCTAAGTGAG
CTGGAACGGATAAATTGCATCCCTGACCAGTCATCTAACAAAGGGCACATGTGATGAGCGAGGCTGCTGCT
GGGATCCTCAGGGATCCATCAGTGTTCCTTGTCTATTACTCCAGGAATCATGGCTACAAAATGGAGAGTGA
CGTTGTAACACAAATGCAGGATTCACAGCCACTGAAAACTTACCTTCTGCACCCGTGTTGGAAAC
AGCATCGAAAACATCCTGCTTACAGCAGAGTACCAGACATCAAATCGCTTCCACTTTAAGTTGACTGACC
AAACCAAGAAGAGGTACGAAGTGCCCCACGAGCAGTGAACCCCTCAGTGGAAATGCCCTTCTCCTT
GAACTACAAAGTTGAGGTTTCCAAGGAGCCATTTAGCATCAAAGTACCAGAAAAAGCAATAACCGTGTG
CTGTTTACTCAAGTATGGGCCCCTCCTTCTCTGACCAGTTCCTGCAGTTCTCTACCCACCTGCCAA
GTGCTAATGTATATGGTCTGGGTGAACATGTGCACCAGCAGTACCAGACAAATATGAATTGGAAGACCTG
GCCCATGTTTCCAGAGACACAACCCGAATGAGGATGGAACCTAAGTGTATGGTGTGCAGACGTTCTTC
CTGTGCCCTTGAAGATAACAGTGGATTGTCTTCGGGGTGTTCGATGAACAGCAATGCCATGGAGGTTA
CTTTACAGCCTACCCAGCAATCACATACCGCACCCTGCGGGAATTCTGGACTTCTATGTGTTCTTGGG
GAACACACCTGAGCAAGTTGTTCAAGAATATCTAGAGCTCATTGGACGGCCAGCTCTGCCTTCACTGAG
ACACTTGGGTTTCACTCAGCCGGTATGATTATAAAAGCCTAGATAATATGAAAGCAGTTGTGGAGAGAA
ACCGTGCAGCACAACCTCCTTATGATGTTGAGCATGCTGATATTGATTATATGGATCAGAAGAAGGACTT
CACTTATGACCCAGTGAATTTTAAAGGCTTCCCAGAGTTTGTAAAGGAGCTACACAATAATGGCCAGAAA
CTTGTATCATTTTGGATCCAGCAATTTCCAACAACCTTTCTCAAGTAATCCTTATGGCCCATATGACA
GGGTTTCCAGCAATGAAAATCTGGGTGAATAGTTCTGATGGCATCAGTCCAGTCATTGAAAGGTCTGGCC
TGAACAACCTGTGTTTCTGATTACACCAGTCCCAACTGTGCTGTTTGGTGGACAAAAGAATTTGAGCTT



[View online »](#)

TTCCACAAAGAAGTGGAGTTTGATGGAATTTGGATTGATATGAACGAAGTCTCCAACCTTTATTGATGGTT
 CATTCTTCTGGATGTTCCCAAAACAACCTGAATTATCCCCATTACACCAAAAAGTCTGGATGGGTA
 GTTCTCTAAGACTCTCTGCATGGATGCCGTTGAGTGGGGGAAGCAGTATGATGTCCACAATCTATAT
 GGCTACTCCATGGCCATTGCCACAGCAAAAGCCGTGAAGGACGTGTTCCAGACAAGAGAAGCTTCATCA
 TAACCCGCTCTACCTTTGCTGGTCTGGCAAATTTGCAGCCACTGGTTAGGAGATAACACCCGCACCTG
 GAAGGACCTTCAGTGGTCCATCCCAGGCATGCTTGAGTTCAACCTCTTCGGTATCCCAATGGTAGGGGCC
 GATATATGTGGCTTTGCCAAGACACATACGAGGAGCTCTGCAGGCGTGGATGCAGTGGGGCATT
 ATCCATTTTCTCGGAATCAAAATGGCCAAGTTACAAGGACCAGGATCCTGCCTCTTTGGGAATAACTC
 CCTGCTGTTGAATTCGTCTAGGCACTACCTAACATCCGCTACACTTTGCTGCCTTACCTTACACTCTT
 TTCTACAGAGCACACAGCCGGGAGACTGTAGCTAGGCCTCTTCTGCATGAGTTCTATGACGACAACA
 ATACTTGGGGCATAGACCGCAATTTCTTTGGGGACCAGGTCTTCTCATCACTCTGTTCTGGATCAGGG
 TGCAGAGAAAAGTAAAAGCATATGTGCCTAATGCCACCTGGTACGACTATGAAACCGGAGAGGAAGTGGG
 TGGAGAAAAGCAAGCATTGAGATGCAACTTCTGGAGACAAGATTGGACTTACCTTCGAGGGGGCTACA
 TCTTTCCACACAACAGCCTGCCACAACCAGAAAGCCAGCCGGAAGAATCCTCTTGGTCTTATTGTCGC
 CCTGGATGAGAACAAAGAAGCAAGAGGAGAGCTGTTCTGGGATGATGGGGAGTGAAGGATACTGTGGCC
 CAAAACATTTACCTTTTCAAGTGAATTTCTGCTACTCAAAACCTTTGGATGTGACAATTTCAAGTCCAA
 ACTACAAGGATCCCAATAACCTAGAATTCAGGAAATTTAAATCTTTGGAACACGGGAATTCGCAATGT
 TAGAGTAAAACAGAAATGGGAATCTCCTTCAAATGTCTCCTCAAGTCACTTACAATCCAAACCTGAAGTT
 GCCACCATCACAATAATCCATCTCAGGCTGGGAGAAGCGTACACGGTTGAGTGGGACTTCTTACAAGGG
 AGGAGGAAAGGATAGATTGCTATCCAGATGAGCATGGTGCCTCTGAGGCAAACTGCAGTGGCCGTGGCTG
 CATCTGGGAGGCATCCAACACTACTAGGGGCCCTCCTTGTACTTTGCTCATGAGCTGACTCAGTCAGC
 AATGTTCAAGTACGACTCACATGGGGCCACAGTGCATCTCCTTGAAGGCTTCTACTTATAGCAATGCCT
 TCCCCTTACACTGTGAATAAACTGAACTGCAAGTGCATATCACAAGAACGAAATGCTGCAGTTTAA
 GATCTATGATCCCAACACAGTCCGTATGAAGTCCAGTCCCTCTGAACATCCCAAGTGCCTTCAAGT
 ACCCTGAAGGCCGTCTGTATGATGTCTCATCAAGGAGAAATCCATTTGGGATTCAAATTCGCCGGAAGA
 CTACAGGCACTGTAATCTGGGACTCTCAGCTCCTCGGCTTCACTTCAATGACATGTTTATCCGCATCTC
 CACCCGCTGCCCTCCACATACATCTATGGCTTTGGGAAACTGAGCACACAACCTTCAAGATAGACATG
 AACTGGCACACATGGGGCATGTTTTCCAGGGATGAGCCCCGGGTACAAGAAGAATTCTTATGGTGTTC
 ACCCTTACTACATGGGGCTGGAGGAAGATGGCAATGCCATGGAGTCTCCTGATGAACAGCAATGCCAT
 GGATGTGACCTTCCAGCCATGCCTGCCCTGACATACCGAACCATAGGGGGCATTCTGGACTTCTATGTG
 TTCTTGGGCCCAACTCCAGAGATTGTTACTCAACAATATACAGAGTTGATTGGTGGCCTGTGATGGTAC
 CTATTGGTCTCTGGGATTCCAGCTGTGTGCTATGGATATGAGAATGATGACTGAAATGGCAACCTGTA
 TGATGAAATGGTGGCTAAGCAGATTCCCTATGATGTGCAGTACTCAGACATTGACTACATGGAGAGGCAG
 CTGGACTTCAAGCTCAGCCCCAAGTTCTCTGGGTTCCAGCCCTGATCAATCGCATGAAGGCCAATGGGA
 TGAGGGTCATCCTCATTCTGGATCCAGCCATTTCTGGCAACGAGACAGAGCCCTACCCGGCTTACCCCG
 GGGTGTGGAGAATGACGCTTTCATCAGATATCCCAATAATGGAAGCATTGTCTGGGAAAGGTCTGGCCT
 GATTACCCTAATATCACTGTGGACCCTTCTTTAGGCTGGGACCATCAAGTGGAGCAATACCGAGCTTATG
 TGGCCTTCCAGACTTTTTCCGTAATTCAACTGCTACATGGTGGGAAGAAGGAGATTAAGAAGCTCCAGC
 CAACACACAGGATCCTGCCAAGAGCTTGAAGTTGATGGCCTGTGGATTGATATGAATGAACCTTCCAGC
 TTTGTGAATGGGCAAGTTCCTTCTGGCTGACGATGCTACTCTGAACCCCTCCCTACATGCCATATT
 TGGAAAGCCAGGGACAGGGCCTGAGCAGTAAGACCCTGTGCATGGAGAGTGAAGCAGATCCTTCCAGATGG
 CTCCCGGTACGGCACTATGATGTACACAACCTGTATGGGTGGTCCCAGACCAGACCTACCTACGAAGCT
 GTGCAGGAGGTGACAGGAGAGAGAGGGATCGTCATCACACGCTCCACATTTCCCTCTTCTGGACGCTGGG
 GAGGACTGCTGGGAGACAACACAGTGCCTGGGACCAGCTGGGAAATCCATCATTGGCATGATGGA
 TTTGAGCCTTCTCGCATATCCTATACCGGTGAGACATCTGTGGGTTCTTTCAAGATGCTGAGTATGAG
 ATGTGTGTTGCTGGATGACGCTGGGCGCTTTTACCCCTTCTCCAGGAACCACAACACCATCGGGACCC
 GGAGACAAGACCCTGTATCCTGGAATAAAACCTTTGAGGATATTTCCAGAAGTGTGTTGGAACCCAGATA
 CACCCTGTTGCCATATCTTACACTTGTATGTACAAGGCCACACGGAGGGCAGCACAGTTGTGAGGCT
 CTCTCCATGAGTTTGTGTCAGACCCGGGAGACCTGGAATATAGACAACAGTTTCTGTTGGGCCAGCCT
 TCTAGTCAGCCCTGTGCTTGGCCTAATGCCAGAAAGTTGAAGCATATTTCCAGGGCCCGCTGGTA
 TGACTACTACAAGGGTGTAGATATCAATGCAACGGGAGAGTGAAGACCTTGAAGCCCTTGTGAGTAC
 ATTAATCTTCATATTCGTGGGGTTATATTCTGCCCTGGCAGGAACCTGCCATGAACACCCATTTAAGCC

GGCAGAAGTTCATGGGCCTCAGGGCTGCGTTGAATGCTGAGGGACGTGCTGAGGGCTGGCTCTTCTGGGA
 TGATGGGAAAAGGATCAATACCGATCAGTACTACTTGGCCAGGTTTTCTGTCAACCAGACTACATTGCTG
 ACGCATGAAAAGTTTAAACAATTACCTCACTGGCACAGCACCCCTTATATCTAGGCTACATTGATATCTGGG
 GATTGAGCAGTCTTCCATTACCAATGTGAGCATCTCTTGAACACTAATAATGAAGAAGCTTTGCCAA
 CTAACACTCCACAACCAAGATACTGAGTGTCAATGACTGACAAAAAATCAGCCTGCACACTTCAAT
 TCACTGACATGGAGCTCTTCA

ACGCGTACGCGGCCGCTCGAG - GFP Tag - GTTTAA

Protein Sequence:

>MG215478 representing NM_001171003
 Red=Cloning site Green=Tags(s)

MAGRRFKKFSKLELVLIVLLLVLFIIAVVLIVLLANSTPENAI GAETTGPDTTTRTTLNPNCPVLSE
 LERINCPDQSSNKGTCDERGCCWDPQGSISVPCYYSRNHGYKME SDVVNTNAGFTATLKNLPSAPVFGN
 SIENILLTAEYQTSNRHFHKLTDQTKRYEVPHEHVQPFSGNAPSSLNYKVEVSKEPFSIKVTRKSNRV
 LFDSSIGPLLFSDQFLQFSTHLP SANVYGLGEHVHQYRHNMNWKTWPMFSRDTPNEDGTLNLYGQTF
 LCLEDNSGLSFGVFLMNSNAMEVTLQTPAITYRTTGGILDFYVFLGNTPEQVVQEYLELIGR PALPSYW
 TLGFQLSRYDYKSLDNMKAVVERNRAAQLPYDVQHADIDYMDQKKDFTYDPVNFKGFPEFVKELHNNQK
 LVIIIDPAISNNSFSSNPYGPYDRGSAMKIWNSSDGISPVIGKVPWGTTFPDYTPNCAVWWTKEFEL
 FHKEVEFDGIWIDMNEVSNFIDGSFSGCSQNNLNYPPTPKVLDGYLFSKTLCMDAVQHWGKQYDVHNL
 YGYSMIAIATAKAVKDVFPDKRSFIIITRSTFAGSGKFAAHLGDNTATWKDLQWSIPGMLEFNLF
 GIPMVGA DICGFAQDYEELCRRWMLGAFYF SRNHNGQGYKDQDPASFGNNSLLLNSSRHYLNIRY
 TLLPYLYTL FYRAHSRGTVARPLLEHFYDDNNTWIDRQFLWGPGLLITPVL DQGAEKVKAYVP
 NATWYDYETGEELG WRKQSIEMQLPGDKIGLHLRGGYIFPTQQPATTEASRKNPLGLIVALDEN
 KEARGELFWDDGESKDTVA QNIYLFSEFSVTQNHLDVTISSPNYKDPNNLEFQEIKIFGTR
 EFRNRVRKQNGNLLQMSPQVTYNPNLKV ATITNIHLRLGEAYTVEWDFFTREEERIDCYP
 DEHGASEANCSARGCIWEASNTTRGPCCYFAHELVSVS NVQYDSHGATADISLKASTYSNA
 FSTPVNKLKLVQTYHKNEMLQFKIYDPNHSRYEVPVPLNIPSAPLS TPEGRLYDVLIKEN
 PFGIQRRTTGTVIWDSQLLGFTFNDMFI RISTRLPSTYIYGFGETEHTTFKIDM
 NWHWTGMFSRDEPPGYKNSYGVHPYMGLEEDGNAHGVL LMNSNAMDVTFQMPALTYRTIG
 GILDFYV FLGPTPEIVTQYTELIGRPVMVPYWSLGFQLCRYGYENDTEIANLYDEMVAKQIPY
 DVQYSDIDYMERQ LDFKLSPKFSGFPALINRMKANGMRVILIDPAISGNETEPYPAFTRG
 VENDVFIRYPNNGSIVWGK VWP DYPNITVDP SLGWDHQVEQYRAYVAFPDFFRNSTAT
 WWKKEIKELHSNTQDPAKSLKFDGLWIDMNEPSS FVNGAVPSGCSDATLNHPPYMPYLEA
 RDRGLSSKTLCESEQILPDGSRVRHYDVHNL YGWSQTRPTYEA VQEVTERGIVITRSTF
 PSSGRWGGHWLGDNTAAWDQLGKSIIGMMDFSLFGISYTGSDICGFFQDAEYE MCVR
 WMLGAFYF SRNHNTIGTRRQDPVSWNKTFEDISRSVLETRYTLLPYLYTLMYKAHTEG
 STVVRP LLHEFVSDRETWNIDKQFLGPAFLVSPVLEPNARKVEAYFPRARWYDYKGV
 DINATGEWKTLEAPLEY INLHIRGGYILPWQEPAMNTHLSRQKFMGLRAALNAEGRAE
 GWLFWDDGKRINTDQYYLARFSVNQTLL THEKFNNYLTGTAPLYLGYIDIWGLSSSSIT
 NVSISWNTNNEEVFANYNSTTKILSVNMTDKKISLHTFN SLTWSSS

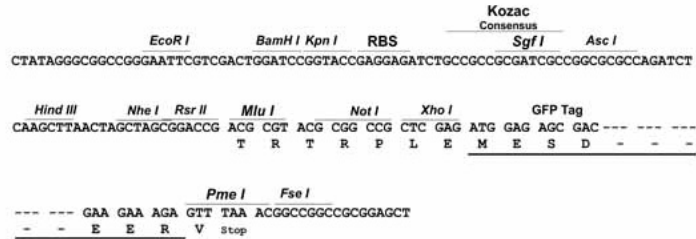
TRTRPLE - GFP Tag - V

Restriction Sites:

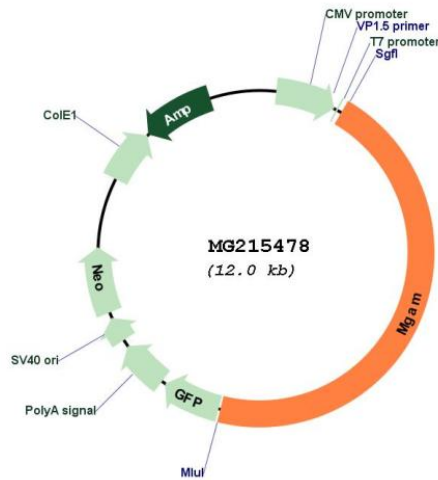
Sgfl-MluI

Cloning Scheme:

Cloning sites used for ORF Shutting:



Plasmid Map:



ACCN: NM_001171003

ORF Size: 5481 bp

OTI Disclaimer:	The molecular sequence of this clone aligns with the gene accession number as a point of reference only. However, individual transcript sequences of the same gene can differ through naturally occurring variations (e.g. polymorphisms), each with its own valid existence. This clone is substantially in agreement with the reference, but a complete review of all prevailing variants is recommended prior to use. More info
OTI Annotation:	This clone was engineered to express the complete ORF with an expression tag. Expression varies depending on the nature of the gene.
Components:	The ORF clone is ion-exchange column purified and shipped in a 2D barcoded Matrix tube containing 10ug of transfection-ready, dried plasmid DNA (reconstitute with 100 ul of water).
Reconstitution Method:	<ol style="list-style-type: none">1. Centrifuge at 5,000xg for 5min.2. Carefully open the tube and add 100ul of sterile water to dissolve the DNA.3. Close the tube and incubate for 10 minutes at room temperature.4. Briefly vortex the tube and then do a quick spin (less than 5000xg) to concentrate the liquid at the bottom.5. Store the suspended plasmid at -20°C. The DNA is stable for at least one year from date of shipping when stored at -20°C.
RefSeq:	NM_001171003.1 , NP_001164474.1
RefSeq Size:	6488 bp
RefSeq ORF:	5484 bp
Locus ID:	232714
Cytogenetics:	6 B1