

## Product datasheet for **MG215471**

### 3632451O06Rik (NM\_026142) Mouse Tagged ORF Clone

#### Product data:

Product Type:	Expression Plasmids
Product Name:	3632451O06Rik (NM_026142) Mouse Tagged ORF Clone
Tag:	TurboGFP
Symbol:	3632451O06Rik
Synonyms:	AU067705
Mammalian Cell Selection:	Neomycin
Vector:	pCMV6-AC-GFP (PS100010)
E. coli Selection:	Ampicillin (100 ug/mL)



[View online »](#)

ORF Nucleotide  
Sequence:

>MG215471 representing NM\_026142  
Red=Cloning site Blue=ORF Green=Tags(s)

TTTTGTAATACGACTCACTATAGGGCGGCCGGAATTCGTCGACTGGATCCGGTACCGAGGAGATCTGCC  
GCC**CGCATCGCC**

ATGCTCCAGGACTCAATTACTGGAATTGTCAACTCCTTCAACCTGTTTTCCCATCCACTATGAGCAGAC  
CAACTCTGATGCCACCTGTGTGGCTTTCTGTAGCATTCTTCCCTCACCTTGGCTACAGGATGTCAAGC  
TTTCCAAAGGTGAAAAGGAGGGAGACAGCACAAGAATATGCAGAGAAAAGAGCAGTCCCAGAAGATGAAC  
ACTGATGACCAAGAAAACATCTCCTTTGCTCCAAAGTACATGCTGCAGCAGATGTCCTCTGAAGCTCCAA  
TGGTACTATCTGAAGGACCTTCAGAGATACCATTAATTAAGTATTCTCAGTCAACAAAGAGAGCCATCT  
TCCAGGAGCTGGGCTTCTGCATCTACCAGCCCTGGTGTACTCTCCAGTGAAGCTGTGGTCTCAGCC  
AGTGAACAAGAGCCTGGCCCCAGCCTGCTTGAAGAATGTCTTCTGAGCAGACCCCTTCCAAGGTATGT  
TAACTGTTGCTGTATCTCACCTGCTTCTGAACTCTGACCAGGAGGGACCTATAACAGTTTGAGTAC  
CCAGCCTATTGTAGCAGCAGTACAGACGTAACACATGGTTCTCTGGATTATTTAGATAACCAAGTATTT  
GCAGCTAAAAGTCAGGAAGCAGTTAGCTTAGGAAATTCACCTTCTTCTCTATAAAATACCAAAGAACCTG  
AGATAATCAAAGCAGATGCAGCCATGGGAACACTGTCTGTTCTGGTGTGATTCTACAGGAGACATGGA  
GCCTGATAGGGAGAGACCCTCAGAGATGGCAGCTGATGATGGCCAGAGCACTACCACCAAGTATTTGGTG  
ACAATCCCAATAATTTCTGACTACTGAGCCAACAGCTGGCAGTATTTGGGGGATGCTAAGGTCACAG  
TGAGTGTGAGCAGCAGCTGGCCAGTCTCTTCTATCTTCAATGAGGAGTGGGATGACACCAAAATTTGAGAG  
CATAAGTCGGGGGAGGCCCCAGAGCCAGGAGACAATGCAGAGACTCAAATGAGAACAAGCCACCACAT  
GGGACCTATGAGAGCTTTGAGGGGACTGAGGAGAGCCCTCTTCCACAGCAGTTTTAAAGGTGGCTCCAG  
GGCACCCTGGGAGGAGAACCAGCCTTGGGAACAGCCCTGGTGACTGCACTGGGGGATGAGAGGTCTCCAGT  
CTTGACTCATCAGATTTCTTCACTCCCATGAGTCTGGCAGAAGACCCTGAAGTTTCTACCATGAAGCTG  
TTTCAAGTGCAGGAGGCTTCAGAGCCTCCACCCAGGGGACAGGACCCAGCTCTCCTCAGAGACTGCAT  
TTTCTACCTCTCAATATGAGTCTGTGCCACAGCAGGAAGCAGGAAATGTGTTAAAAGACATCACTCAAGA  
GAGAAAAATGGCTACTCAAGCAATGAACACTACATCACCTGTGGTGACACAAGAGCATATGGCCACCATC  
GAGGTTCCAGAGGCAGTGGGGAGCCTGAAGAAGGCATGCCATCCCTGTCTCCTGTGCCTGCTGAAGTGG  
CTGATGCTGAGCTGTCCAGAAGAGGGGAGTCTCTGGCCACTCCAGCCTCCACCACTGTTGTCCCTTTGTC  
TCTCAAACCTTACCTTTCCATGGAAGATCTCATGGACACAATCACTGGACCAAGTGAAGAATTCATACCA  
GTATTGGGCTCTCAATGGCACCCCTGCAATGACTGTGGAGGCTCCACAAATTTCTTCAGCACTCCCTT  
CTGAGGGAAGAAGTAGTCCATCTATCAGCCGCCAAATACAGCTGCCTCCTATGGCCTAGAACAACCTTGA  
ATCTGAAGAGGTAGAAGATGATGAGGATGAAGAGGATGAAGAAGATGAAGAGGAAGAAGAAGATGAG  
GAAGATGAAGAAGATGAGGAAGATAAAGAGACAGACTCCTTGATAAAGACTTCGATGGTGATACTGAAC  
CACCAGGGTTTACTCTGCCTGGCATCACGTCCCAGGAACCTGACATACGTTTCAGGAAGCATGGACCTACT  
AGAGGTAGCCACCTACCAGGTGCCAGAGACCATCGAGTGGGAACAGCAGAATCAAGGTCTGGTGAGAAGC  
TGGATGGAAAAGCTAAAAGACAAGGCAGGCTACATGTCTGGAATGCTGGTGCCTGTTGGGGTAGGGATAG  
CTGGAGCCTTGTTCATCTTGGGAGCGCTATACAGCATTAAGGTTATGAATCGCCGAAGAAGAAATGGATT  
CAAAAGGCATAAAAGGAAGCAGAGAGAATTCAACAGTATGCAAGACAGAGTGATGCTGTTAGCTGATAGC  
TCTGAAGACGAATTC

**ACGCGT**ACGCGGCCGCTCGAG – GFP Tag – GTTTAA

Protein Sequence: >MG215471 representing NM\_026142  
 Red=Cloning site Green=Tags(s)

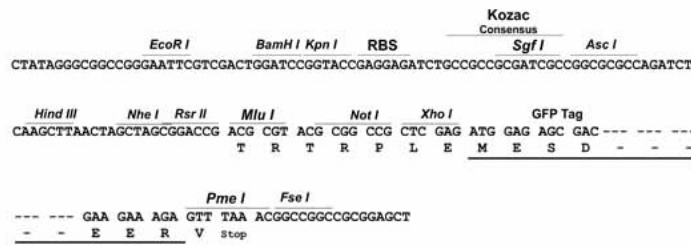
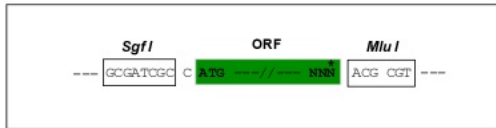
MLQDSITGIVNSFNLFFPSTMSRPTLMPTCVAFCSILFLTLATGCQAFPKVERRETAQEYAEKEQSQKMN  
 TDDQENISFAPKYMLQQMSSEAPMVLSEGPSEIPLIKVFSVNKESHLPGAGLLHPTSPGVYSSSEPVVSA  
 SEQEPGPSLLERMSSEHSLSKVMLTVAVSSPASLNPDQEGPYNSLSTQPIVAAVTDVTHGSLDYLDNQLF  
 AAKSQEAVSLGNPSSSINTKEPEIIKADAAMGTTVVPVGDSTGDMEPDRERPSEMAADDGQSTTTKYL  
 TIPNNFLTTEPTAGSILGDAKVTYSVSTAGPVSSIFNEEWDDTKFESISRGRPPEPGDNAETQMRTPPH  
 GTYESFEGTEESPSSTAVLKVAPGHLGGEPALGTALVTALGDERSPVLTHQISFTPMSLAEDPEVSTMKL  
 FPSAGGFRASTQGDRTQLSSETAFSTSYQESVPQQEAGNVLKDITQERKMATQAMNTTSPVVTQEHMATI  
 EVPRGSGEPEEGMPVSLPVPAEVADAELSRGESLATPASTTVVPLSLKLTSSMEDLMDTITGPSEEFIP  
 VLGSPMAPPAMTVEAPTISSALPSEGRTSPSISRPNTAASYGLEQLESEEVEDDEDEDEDEDEDEDEDE  
 EDEDEEDKETDSLYKDFDGDTEPPGFTLPGITSQEPDIRSGMDLLEVATYQVPETIEWEQNQGLVRS  
 WMEKLDKAGYMSGMLVPVGVGIAGALFILGALYSIKVMNRRRRNGFKRHKRQREFNSMQDRVMLLADS  
 SEDEF

TRTRPLE - GFP Tag - V

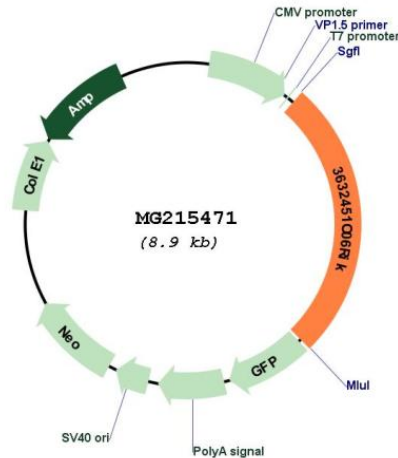
Restriction Sites: SgfI-MluI

Cloning Scheme:

Cloning sites used for ORF Shuttling:



## Plasmid Map:



ACCN: NM\_026142

ORF Size: 2325 bp

**OTI Disclaimer:** Due to the inherent nature of this plasmid, standard methods to replicate additional amounts of DNA in *E. coli* are highly likely to result in mutations and/or rearrangements. Therefore, OriGene does not guarantee the capability to replicate this plasmid DNA. Additional amounts of DNA can be purchased from OriGene with batch-specific, full-sequence verification at a reduced cost. Please contact our customer care team at [custsupport@origene.com](mailto:custsupport@origene.com) or by calling 301.340.3188 option 3 for pricing and delivery.

The molecular sequence of this clone aligns with the gene accession number as a point of reference only. However, individual transcript sequences of the same gene can differ through naturally occurring variations (e.g. polymorphisms), each with its own valid existence. This clone is substantially in agreement with the reference, but a complete review of all prevailing variants is recommended prior to use. [More info](#)

**OTI Annotation:** This clone was engineered to express the complete ORF with an expression tag. Expression varies depending on the nature of the gene.

**Components:** The ORF clone is ion-exchange column purified and shipped in a 2D barcoded Matrix tube containing 10ug of transfection-ready, dried plasmid DNA (reconstitute with 100 ul of water).

**Reconstitution Method:**

1. Centrifuge at 5,000xg for 5min.
2. Carefully open the tube and add 100ul of sterile water to dissolve the DNA.
3. Close the tube and incubate for 10 minutes at room temperature.
4. Briefly vortex the tube and then do a quick spin (less than 5000xg) to concentrate the liquid at the bottom.
5. Store the suspended plasmid at -20°C. The DNA is stable for at least one year from date of shipping when stored at -20°C.

RefSeq: NM\_026142.5  
RefSeq Size: 2748 bp  
RefSeq ORF: 2328 bp  
Locus ID: 67419  
UniProt ID: Q8BT18  
Cytogenetics: 14 C1