

## Product datasheet for **MG215459**

### **PrI8a2 (NM\_010088) Mouse Tagged ORF Clone**

#### Product data:

Product Type:	Expression Plasmids
Tag:	TurboGFP
Symbol:	PrI8a2
Synonyms:	D/tPRP; DPRP; Dtprp; GhdII; mdPRP
Mammalian Cell Selection:	Neomycin
Vector:	pCMV6-AC-GFP (PS100010)
E. coli Selection:	Ampicillin (100 ug/mL)

**ORF Nucleotide Sequence:** >MG215459 representing NM\_010088  
Red=Cloning site Blue=ORF Green=Tags(s)

TTTTGTAATACGACTCACTATAGGGCGGCCGGGAATTCGTCGACTGGATCCGGTACCGAGGAGATCTGCC  
GCC**GCGATCGCC**

ATGCTGCCATTGAGTCAACCTCACTTCTGGGCACTCCTGCTGCTGGTGGTTCAAACCTGCTTCTGTGGG  
AGAAAGCTGCATCAATTCCTGAATGTCAAACAGGAGAGAATGGCTGCTCAGATCCCCTTGTGATCACATT  
TAAGAATGCCCTTCAGCGAGCTGAAGTCATCAATATTCTTGTCTGATAAAATGCATGAAGAGTTTTACCAC  
AACCCATTCTCAGCTGGACAATTTGAAACACTTGTTCACGCATGTATAGACGTGATGAGGAGTTCTCA  
GAGCCAGAAATCACTGCCACTCTAATGTCACAAACCCACCAGCTCATGGACCTGAACATGAAAACTCAA  
GACAAAAAGATATTTAAAAACGATGATCAATTTTATGGGTGCATGGATCACTCCTGTATACTATCTAGTG  
GAAGTACTAAGTGACATGCAAAATGTCCTGAATCAATCTACTCAAAGCTCAGGAGATAGAATTGAAAT  
TCAGAGAAATCCATGATGACCTTACGTGGTACTCAAAAAGGTCTATCCTAAAGTAACATTTGGGAAAA  
ATCTATCATATGGGAATACCTTCCAGGCCTAAGATCAACTGACACAAGTAAAAAATTTTGGCAATGTTT  
AACCTTTCTCACTGCCTACGCGTTGATATATTCTTCAAATATCATCTCAGTGCATTGATGTGCCGCA  
TAACTGGGCAAGATTGC

AG**CGGACCG**ACGCGTACGCGCGCTCGAG - GFP Tag - GTTTAA



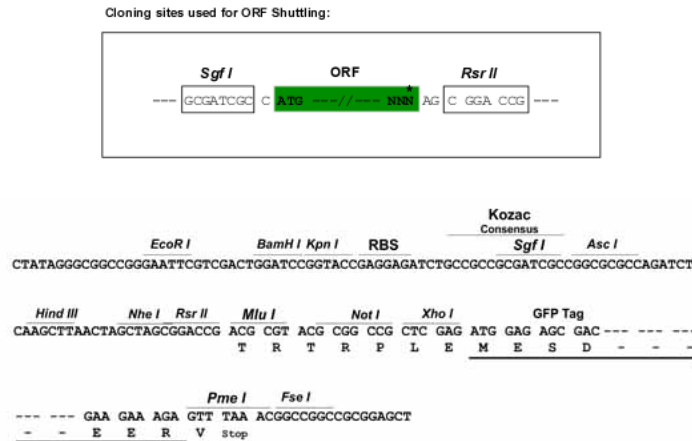
**Protein Sequence:** >MG215459 representing NM\_010088  
 Red=Cloning site Green=Tags(s)

MLPLSQPHFWALLLLVSNLLLWEKAASIPECQTGENGCSDPLVITFKNALQRAEVINILADKMHEEFYH  
 NPFSAQGFETLVSRMYRRDEEVLARARNHCHSNVTNPPAHGPEHENLKTARYLKTMINFMGAWITPVYYLV  
 EVLSDMQNPESIYSKAQEIELKFREIHDDL TWLKKVYPKVTFWEKSIWEYLPGLRSTDTSKKFLAMF  
 NLSHCLRVDIFFIKYHLSALMCRITGQDC

SGPTRRRLE - GFP Tag - V

**Restriction Sites:** SgfI-RsrII

**Cloning Scheme:**



**ACCN:** NM\_010088

**ORF Size:** 717 bp

**OTI Disclaimer:** The molecular sequence of this clone aligns with the gene accession number as a point of reference only. However, individual transcript sequences of the same gene can differ through naturally occurring variations (e.g. polymorphisms), each with its own valid existence. This clone is substantially in agreement with the reference, but a complete review of all prevailing variants is recommended prior to use. [More info](#)

**OTI Annotation:** This clone was engineered to express the complete ORF with an expression tag. Expression varies depending on the nature of the gene.

**Components:** The ORF clone is ion-exchange column purified and shipped in a 2D barcoded Matrix tube containing 10ug of transfection-ready, dried plasmid DNA (reconstitute with 100 ul of water).

**Reconstitution Method:**

1. Centrifuge at 5,000xg for 5min.
2. Carefully open the tube and add 100ul of sterile water to dissolve the DNA.
3. Close the tube and incubate for 10 minutes at room temperature.
4. Briefly vortex the tube and then do a quick spin (less than 5000xg) to concentrate the liquid at the bottom.
5. Store the suspended plasmid at -20°C. The DNA is stable for at least one year from date of shipping when stored at -20°C.

**Note:** Plasmids are not sterile. For experiments where strict sterility is required, filtration with 0.22um filter is required.

**RefSeq:** [NM\\_010088.1](#), [NP\\_034218.1](#)

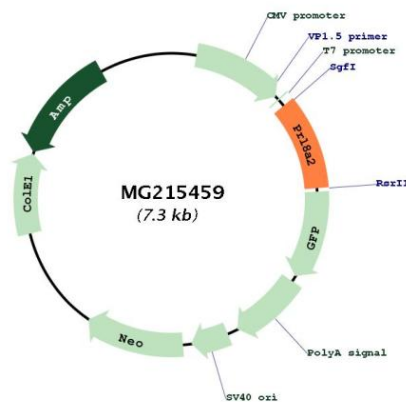
**RefSeq Size:** 911 bp

**RefSeq ORF:** 723 bp

**Locus ID:** 13529

**Cytogenetics:** 13 12.41 cM

### Product images:



Circular map for MG215459