

## Product datasheet for **MG215443**

### Card6 (NM\_001163138) Mouse Tagged ORF Clone

#### Product data:

Product Type:	Expression Plasmids
Product Name:	Card6 (NM_001163138) Mouse Tagged ORF Clone
Tag:	TurboGFP
Symbol:	Card6
Synonyms:	D730008L15
Mammalian Cell Selection:	Neomycin
Vector:	pCMV6-AC-GFP (PS100010)
E. coli Selection:	Ampicillin (100 ug/mL)
ORF Nucleotide Sequence:	>MG215443 representing NM_001163138 Red=Cloning site Blue=ORF Green=Tags(s)

TTTTGTAATACGACTCACTATAGGGCGGCCGGAATTCGTCGACTGGATCCGGTACCGAGGAGATCTGCC  
GCC**CGATCGCC**

ATGGCTACAGAGGGTCTCCTCAGAACTCATAGAAAAAACGTACGAAGTTGCTCAGTGTCTCCAAC  
AAGATCCGGACTCTATCTGGACACGTTAACCTCTCGGAGCTGATTTCTGAGAAGGAGTATGAGACTCT  
GGAGGAAATCACAGATCCCCTGAAGAAAAGTCGGAAGCTGTTAATTTTGATACAGAAAAAGGAGAGGAC  
AGCTGTCCGGCTTCTCCGGTGTGTTGCTAATGCCTTCCAGAGTCAGCGTCCACAGTGGGCTTCAAGC  
ACGAAGTCCACGGCAGGAAGCTGAAGAGACTGTGGGGTGAACAGGAATTCTGAAGATCCCCTTCTCT  
TGGGACAATAATCCCGGAGATAGCAGAGCTCTCAGAAGAGAAAGAATGTCTAGATCTGAGAGCTTTGAAG  
TTCTTACCTACAAGAAAGTGGCCACAGGGAACCTGCAGTATCCTCCCGGAGAACCAGGAAGGGCATG  
GGACACCGCAGGTCACGGCTCCCATTCAGTCAAAGAGTTGAGTATGAAGTCCCAGCAAGTATCACCTT  
CTTAAGCAATGGACAGAGATACGAGGAGCCAGATGATTCGCTGTACTTAGAGGAAGGGGAACATCAAGAG  
TACCTTGGGTTCCCTGAAGATGTCGAGACTGTCTTGGAGGAAGAGGCCGCAAGGACCCACAGTGCCTTG  
TATATGATAATGAAGAGGAATGGGAGAATGAAGAGACCATGGGGTCTCCAGTGAAGCCAGTAGCTGTT  
AGAGATCAATTTCTCATTGGAGGAGGAGGAGGAGAAAAAGCGCTGAAGAGAGAAAAAGATATTTCAAGCAT  
GTTCTGTCTTGTGTAACATGGATAGAAGCAGGAAGCTTCTCCAGATTCTGTGAAGCAGTTCCTCCACAG  
ACCGAGGACGTGAGTGGACACCCGAGACCCAGGGGACTTAGCTTGAATTTCTGATGAAGGTTTCAAGC  
TTTAGACTCGACAGCCAGAGATTTTACCCTTAGGCACAAGATGGTGGATGAAGAGAACAAGAAGTCTGCTG  
CTGGCTAGAATGGAGAAGTTAGGAATTGGAGACGCACAAACCATCCATCCCCTGGATGTCCTCTGCGCCT  
GCATGCTTGGCAGACAGCTCTTGAACGTGAAGTCATGTCAAATATGTACCACTGCTGCTTTGCTCT  
TCCCCTGCTACTGCCAGATGCAGAGAACAACAAAGCATCTTAATGATGGGGCCATGAAGGACCTAAAG  
CAGCACGAACGCAGTCTCAGGCGGGCCCCCAGGAAACAGACGCGTCTCTGAGTCTCATGAAGATGC  
CTGTCATCTCTTTGTGCGACTGGGACTGCAGCTTCTCCAAGTCCAGAATTCTGAACACTGCTCAG  
CTCCTCTGCAGAAACCACACGTTTTCTCCGTCGGGACCTGTCGGTCCCTGTGCTGCTCGGCAA



[View online »](#)

ATTTCTGATGGCCTGGTGAAGTGATGTGGCACTTTCCCGACGATGCAGAGCTAACGGTGAGCCACACG  
TTTTCCAGAAACCTGTTGCTGTGGCCAACCTTCGTGGCGATCTAGAAAGCTTTTGGGTGCAATTTGGGT  
TCTGGTGAAGTTTCTCCGCTGTGTTCTTCTCACAGACTGCCTCGGGGAGAAGGAGCGGGCCCTGCTG  
AGGTTCTTAGGAGACGATGCCATTGAAAGGTGCTACGTATCCTCAGTCCCAGGCCAAGGAGAGTGAAG  
AGGCTCAGATTTTCCAAAAGATCCTAAAAGTGGAGCCATCACAGCTACTGTTTTGGGAAGTAGAGGAAGC  
CGGGGATAGAAGGAGGGCTATGGAGGCCCTTCAAGTGCCTCCAGGAAGTAATGTCGTCTCCACTCAA  
TGTGTGCCCTGAAGATATGGCCTGTCTGGCCAGGGAGCTGGGATTCAGGTAGACCAAGACTTTGAAG  
TTATTCAGATACTCAAGTTTCCCCAGAACAAATTGAAGGTGAGAACCAGCAACCACAGAGTCAGACAAA  
AAGCCCATCTGAAAGCCGAACTCAGAAGCCACTCAGAGAGCCTGGAAGTCAATGTGAGGACAGCCAGAAT  
GCTGTAATCTTCCATCAGACTCCAGTATTCATGCCTTATCCAGCACACCCATGGCCCTTGCCATTGAAG  
CTGGAAGTAACTTTTACCATGTTCTTTGAGAGCCCCCGGGCTATAAGCTCCCCTTTAGATCACAGCA  
GAAGGCTGAGTGGTTCTTCCATCCCCCATCAGAATACAAGTGTTCACAGCAGAGGTCAAACTTTGCT  
ATTAATACCTCCAACCTGGAGATTTTATTCAAGGAAAGATTCACAAGATGTTACAGCACTCCTCAGC  
AGTATCACCCGAATGGACATTTGGGAGATCACAGAGACAGGCTTCTCCTGTACAGACCCATCCTAAGAG  
CAGGCAGATGTCCAGAATCTTGAGAGGTCTGGGACAGTGGTCTCTCGAGTAGGTCACGGACGTTCTCTT  
GGCTCACAAAGCAAGGAGAGCTGCAGGAAAGCCACAACCTGAGAAAGCCTGTGCGCAGGGGCTGCAGCTGA  
CTAAAGCAGCTGGAAGTCTATAAGGACTGCCCCACATTAATATCCTCACCCCTCAGCCCTGTACGCC  
AGCAGGAGCCAGTCAAGAACGGATAATGCCAGTCTCTCATCAAGGAGCCCAACAACAACACAGGGAAGG  
CCTGCGGATTTTGTCTTCAAACAGGGTCTCAATCTACATCTGGGAGTAACTTTTCTACCTCCCAGT  
CCAGCGCCCATCAACCCAAATCCAGAGCAAACACTTCCAGCCTCAGCCGTTTCAACCCGTGCTTCTCA  
GAAAAAACCGTCTCACTCCCGGCCCTCCAAGCTAAACCCCTCATCTGGATCCCTCTCATGCAACCTT  
ACTCAGGGGCAGCCTTCCAAGCTACACCCACTCACTCCCAGGCCTCCAAGCTAAACCCACTCACTCTC  
AAGCTAACTCTCATCATCCACATCCCTCCCATGCTAAACCTTCTCATCAGAAATCCCTCTCATGTAACCC  
TACTCATCCGCAGTCTCCATGCTAAGCCCTCTCATCCGCAGTCTCCATGCTAAGCCCTCTCATCCA  
CAGTCTCCCATGCTAAGCCCTCTCATCCACAGTCTCCATGCTAAGCCCTCTCATCCACAGTCTCC  
AAGCTAAGCCCTCTCATCCACAGTCTCCCAAGCTAAGCCCACTCATCCACAGTCTCCCAAGCTAACTC  
CCATCATCCACAGGCTCCCAAGCTAAGCCCTCTCATCCACAGTCTCCATGCTAAGCCCTCTCATCCG  
CATCCCTCCATGCTAAGCCCTCCCATCCAGTCTACTCAGTGTAAAGGCACATAAAGCCCATCAGTCCC  
AACCTAAGCCTTTTCAACCGAGACCCACTCAACCTAAATCCTCGAAGACTAAGCCTTACAGGCCAGGGC  
CTTCCACCCAAGAGCAGGGAGACGT

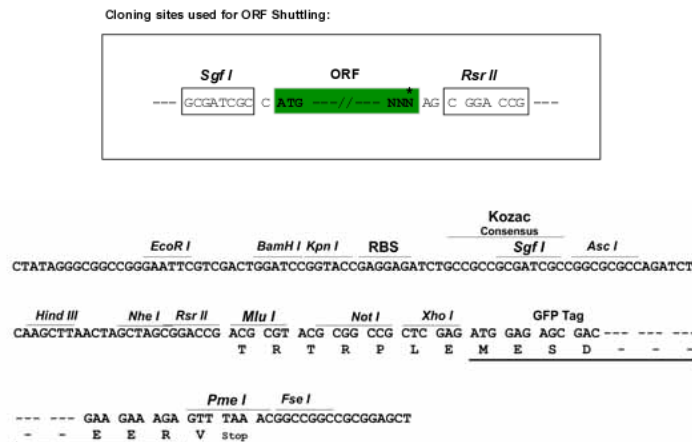
AGCGGACCGACGCGTACGCGGCCGCTCGAG - GFP Tag - GTTTAA

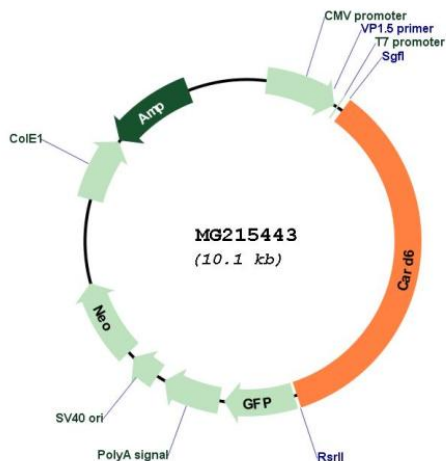
**Protein Sequence:** >MG215443 representing NM\_001163138  
 Red=Cloning site Green=Tags(s)

MATEGASSELIEKKRTKLLSVLQQDPDSILDTLTSRSLISEKEYETLEEITDPLKKSRLKLLILIQKKGED  
 SCRRFLRCLSNAPFESASTVGFKHEVPRQEAETVGVNRSNEDPLSLGTIIPETIAELSEEKCLDLRALK  
 FFTYKSGHRELAVSSRENQEGHGTPTQVTAHSVSRVEYVPSITFLLSNGQRYEEDSLYLEEGEHQE  
 YLGFPEDEVTVLEEEAGKDPQCFVYDNEEEWENEETMGFSSEASSCEINFLEEEEEKSAEERKRVFQH  
 VLSCLNMDRSRKLPLDSVKQFSTDRGREWTPETPGDLAWNFLMKVQALDSTARDFTLRHKMVDENKELL  
 LARMEKLGIGDAQTIHPLDVLCAACMLCADSSLQREVMSNMYHCCFALPLLLPDAENKSIILMMGAMKDLK  
 QHATQSSGGPPRETDAASLSMKMPVISFVRLGHCSFSKSRILNTLLSSSRQKPHTFFLRDLVSPVLPKQ  
 ISDGLVEVMWHPDDAELTVSPHFVQKPVAVANLRGDLESFVWFVGFLEVSSAVFFLTDCLGKERALL  
 RFLGDDAIERCYVILSPQAKESEEAQIFQKILKLRPSQLLFWEEVAGDRRRAMEALQAALQEVMSPLK  
 CVSLEDMACLARELGIQVDQDFEVIQDTQVSPRTIEGENQQPQSQTSPSESRQKPLREPQTQCEDSQN  
 AVIFHQTPVFMYPYPAHPWPLPIEAGSNFYHVPLRAPRAISSHFRSQKAEWFFPFPHQNTSVHSRQNF  
 IKYLQPWRFYSRERFTRCSATPQQYHPNGPFGRSQRQASPVQTHPKSRQMSRTLERSGTVSVRVGHGRSL  
 GSQARRAAGKQPPEKACAQGLQLTKAAGKSIRTLPHIKYPHPQCPAGASQERIMPVSHQGAQQTQGR  
 PADFAFKPGSQSTSGSKLSSTSQSSAHQPKFQSKHFQPPFPVPSQKPSHSRPSQAKPPHLDPSHANL  
 TQGQPSQATPTHSQASQAKPTHSQANSHHPPSHAKPSHQNPSPANHTHPQSSHAKPSHPQSSHAKPSHP  
 QSSHAKPSHPQSSHAKPSHPQSSQAKPSHPQSSQAKPTHPQSSQANSHHPQASQAKPSHPQSSHAKPSHP  
 HPSHAKPSPSQSTQCKAHKAHQSQPKPFQPRPTQPKSSKTKPSQARAFHPRAGR

SGPTRRRLE - GFP Tag - V

**Restriction Sites:** SgfI-RsrII  
**Cloning Scheme:**



**Plasmid Map:**


**ACCN:** NM\_001163138

**ORF Size:** 3525 bp

**OTI Disclaimer:** Due to the inherent nature of this plasmid, standard methods to replicate additional amounts of DNA in *E. coli* are highly likely to result in mutations and/or rearrangements. Therefore, OriGene does not guarantee the capability to replicate this plasmid DNA. Additional amounts of DNA can be purchased from OriGene with batch-specific, full-sequence verification at a reduced cost. Please contact our customer care team at [custsupport@origene.com](mailto:custsupport@origene.com) or by calling 301.340.3188 option 3 for pricing and delivery.

The molecular sequence of this clone aligns with the gene accession number as a point of reference only. However, individual transcript sequences of the same gene can differ through naturally occurring variations (e.g. polymorphisms), each with its own valid existence. This clone is substantially in agreement with the reference, but a complete review of all prevailing variants is recommended prior to use. [More info](#)

**OTI Annotation:** This clone was engineered to express the complete ORF with an expression tag. Expression varies depending on the nature of the gene.

**Components:** The ORF clone is ion-exchange column purified and shipped in a 2D barcoded Matrix tube containing 10ug of transfection-ready, dried plasmid DNA (reconstitute with 100 ul of water).

**Reconstitution Method:**

1. Centrifuge at 5,000xg for 5min.
2. Carefully open the tube and add 100ul of sterile water to dissolve the DNA.
3. Close the tube and incubate for 10 minutes at room temperature.
4. Briefly vortex the tube and then do a quick spin (less than 5000xg) to concentrate the liquid at the bottom.
5. Store the suspended plasmid at -20°C. The DNA is stable for at least one year from date of shipping when stored at -20°C.

**RefSeq:** [NM\\_001163138.1](#), [NP\\_001156610.1](#)

RefSeq Size: 4531 bp  
RefSeq ORF: 3528 bp  
Locus ID: 239319  
Cytogenetics: 15 A1