

## Product datasheet for **MG215422**

### **M1ap (NM\_033079) Mouse Tagged ORF Clone**

#### **Product data:**

Product Type:	Expression Plasmids
Product Name:	M1ap (NM_033079) Mouse Tagged ORF Clone
Tag:	TurboGFP
Symbol:	M1ap
Synonyms:	D6Mm5e
Mammalian Cell Selection:	Neomycin
Vector:	pCMV6-AC-GFP (PS100010)
E. coli Selection:	Ampicillin (100 ug/mL)



[View online »](#)

**ORF Nucleotide Sequence:**

>MG215422 representing NM\_033079  
 Red=Cloning site Blue=ORF Green=Tags(s)

TTTTGTAATACGACTCACTATAGGGCGGCCGGGAATTCGTCGACTGGATCCGGTACCGAGGAGATCTGCC  
 GCC**GCGATCGCC**

ATGAACCGAAGGAAAACACTAGTAGAGGGACCTCCGCTGCCATGAAAATTAGTCATCAACCTCCGAGGC  
 TTCTCATTGTGAATATTGCCGTACCTTCTGGGTTGACATCTGCCCAACCTCTGTGAGGCCTTGACAGAA  
 CTTCTTCTCGATAGCCTGCAGTTTGATGGGCCCCAGCCGGATGTCTCTGTTTCAGCTTATACACAGTACAG  
 AACCCAGCATGAGTGTGTCTCCCATTTGTGCAAGTGAGAGGGAACCTCATTAGGCTGCAGGCCTGCATCT  
 CGGAGCTTCGAATGTTACAGGTAGAAGTTGTACAGACCACCTCACGCCTTACTACCCCTGGCAATAGA  
 GGATGGGCTCCAGCAGTCAAACAGTACAGCAGTCACATGGCCTCAAGTGTCTCAGCCCTGGACTTCC  
 CTGGAGATTACTGTCCTGACTTCTCGGCCTGGAAAAGAAGTGGTCAAAGAAGTGGAGGAAGGGTTGAAAG  
 ATATAAACCTACTTAGTGTGAGAAGACTGCAGGTGGCTGAGGTACAAAAGGCATCCAGGAGCGTTGAGA  
 CTCACCATCTCCTACTGAAGAACCAGCAATGATGAGAGTTCTATCCTGGAAGCTGACATTGTCCTTGAG  
 ACCTAGACAACGATGTTGTGAGCATGGAGGTCTTCTTCAAAGCCTGGCTGCATAACAGTAAAAGTACC  
 AAGAAAACATCCACCTTCTTCTTACTCCACAGAGTCTTCTCCTCCTTCCAGAGCCAAGGATCATCCAAT  
 ATGTCTAAAATGTGATCTCCAAGAGCGATTTCTCAGCCATCCCTGCTTCTCCTGGTACAGCTGATGGCGTG  
 TCGAGAATAGATGACCCCAAAGGAGACATCAGCACACTTACCAGATGGCATCCCTGGCTTCAGCCTCTC  
 CGTATAAGCTTCAAGTGGTCAAGGCTCTGAAATCTAGTGGGATCTGCGAGTCCCTGACCTATGGACTACC  
 CTTTCTCAGACCCACAAGCTGTTGGCAGCTGGACTGGGATGAGCTGGAAACAATCAACAACATTTT  
 CATGCCCTGTGTCAGTCTTCTGTAAGAGAGACTGGCTGCTGTTGGCCAGAGGGGAACCCCTGATCCACA  
 AACACAACCAGAGTCTCCCTGCCTGCAGTCTATGTGATCACACCTTCTCACTCTCACACTCTGGTGGT  
 GAAGCTGGTGGCCACCAGGGAGTTGATGCTGCCTGGCTTCTTCCCCTGCTCTCTGAGGACCCACCTGAA  
 GACAGCCTAAAGATCATAGAGAGCACCTAGACAGCCTGGACCTGGGGCTCACCTACAACCTCTGCATG  
 TTGGGAGCCACTGTACTCACATCTGAGCAGCGCCATGCCAAGCCTCAGGGACGGCTCTACACAAGCTG  
 CGCAAGCCGGGGCCTTAGAAAGGGGGTCCAGCTGCAGACCAACAGAGTTCGAGCCGAGTGGTTCCCTC  
 CCAGTGGCTCCTGCCACGTAGAGCTCTGAAGATGACAGCAGCCAGCAAAGCATCTCAGCAGCCTTCC  
 TGCCTTCGGATTCGGAGGAGGGAGAGGAGCGTCTTCTCACACC

**ACGCGTACGCGGCCGCTCGAG** - GFP Tag - GTTTAA

**Protein Sequence:**

>MG215422 representing NM\_033079  
 Red=Cloning site Green=Tags(s)

MNRRKTTSRGTSAAWKISHQPPRLIVNIAVPSWVDICPNLCEALQNFFSIACSLMGPSRMSLFSLYTVQ  
 NQHECVLPFVQVRGNFIRLQACISELRMLQVEGCHRPPHALLPLAIEDGLQQFKQYSSHMASAAQPWTS  
 LEITVLTSRPGKEVVKELLEEGLKDINLLSVRRLQVAEVTKGIQERSDSPSPTTEEPSNDESSILEADIVLE  
 TLDNDVVSMEVFFKAWLHNSETDQENIHLLLPQSLPPPSRAKDHPICLKCDLQERFLSPSLLPGTADGV  
 SRIDDPKGDISTLYQMASLASASPYKLVVQKALKSSGICESLTYGLPFILRPTSCWQLDWELETNQHF  
 HALCHCLLKRDWLLRLARGEPLIHKHNQSLPACSFYVITPSHSLTLLVKLVATREMLPGFFPLLEDPE  
 DSLKIIESTLDSLGLTYNPLHVGSHLYSHLSSAHAKPQGRLYTSCASRGLRKGGLQTNRVRAAVVPL  
 PVAPAPRRALKMTAASKASSAFLPSDSEEGEERPSHT

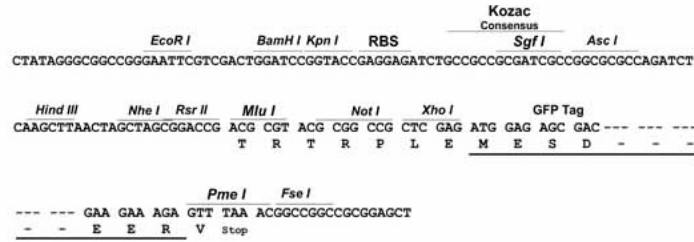
**TRTRPLE** - GFP Tag - V

**Restriction Sites:**

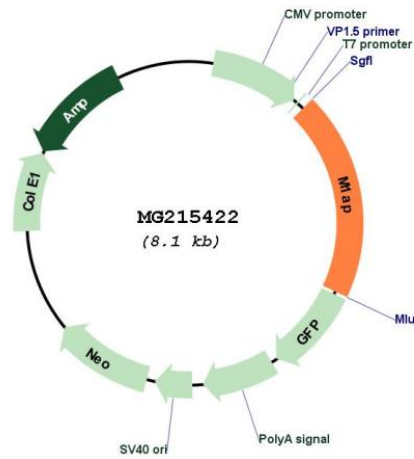
Sgfl-Mlul

Cloning Scheme:

Cloning sites used for ORF Shutting:



Plasmid Map:



<b>ACCN:</b>	NM_033079
<b>ORF Size:</b>	1587 bp
<b>OTI Disclaimer:</b>	The molecular sequence of this clone aligns with the gene accession number as a point of reference only. However, individual transcript sequences of the same gene can differ through naturally occurring variations (e.g. polymorphisms), each with its own valid existence. This clone is substantially in agreement with the reference, but a complete review of all prevailing variants is recommended prior to use. <a href="#">More info</a>
<b>OTI Annotation:</b>	This clone was engineered to express the complete ORF with an expression tag. Expression varies depending on the nature of the gene.
<b>Components:</b>	The ORF clone is ion-exchange column purified and shipped in a 2D barcoded Matrix tube containing 10ug of transfection-ready, dried plasmid DNA (reconstitute with 100 ul of water).
<b>Reconstitution Method:</b>	<ol style="list-style-type: none"><li>1. Centrifuge at 5,000xg for 5min.</li><li>2. Carefully open the tube and add 100ul of sterile water to dissolve the DNA.</li><li>3. Close the tube and incubate for 10 minutes at room temperature.</li><li>4. Briefly vortex the tube and then do a quick spin (less than 5000xg) to concentrate the liquid at the bottom.</li><li>5. Store the suspended plasmid at -20°C. The DNA is stable for at least one year from date of shipping when stored at -20°C.</li></ol>
<b>RefSeq:</b>	<a href="#">NM_033079.2</a> , <a href="#">NP_149070.2</a>
<b>RefSeq Size:</b>	2051 bp
<b>RefSeq ORF:</b>	1590 bp
<b>Locus ID:</b>	110958
<b>UniProt ID:</b>	<a href="#">Q9Z0E1</a>
<b>Cytogenetics:</b>	6 35.94 cM
<b>Gene Summary:</b>	Required for meiosis I progression during spermatogenesis.[UniProtKB/Swiss-Prot Function]