

Product datasheet for **MG215408**

Amy2a4 (NM_001160150) Mouse Tagged ORF Clone

Product data:

Product Type:	Expression Plasmids
Product Name:	Amy2a4 (NM_001160150) Mouse Tagged ORF Clone
Tag:	TurboGFP
Symbol:	Amy2a4
Synonyms:	ENSMUSG00000074267; mAmy2-3; OTTMUSG00000022433
Mammalian Cell Selection:	Neomycin
Vector:	pCMV6-AC-GFP (PS100010)
E. coli Selection:	Ampicillin (100 ug/mL)



[View online »](#)

ORF Nucleotide Sequence:

>MG215408 representing NM_001160150
 Red=Cloning site Blue=ORF Green=Tags(s)

TTTTGTAATACGACTCACTATAGGGCGGCCGGAATTCGTCGACTGGATCCGGTACCGAGGAGATCTGCC
 GCC**CGATCGCC**

ATGAAGTTCGTTCTGCTGCTTCCCTCATTGGGTTCTGCTGGCTCAATATGACCCACATACTTCAGATG
 GGAGGACTGCTATTGTCCACCTGTTGAGTGGCGCTGGGTTGATATTGCCAAGGAATGTGAGCGATACTT
 AGCTCCTAAGGGATTTGGAGGGGTGACAGTCTCTCCACCAATGAAAACGTTGTAGTTCATAACCCATCA
 AGACCTTGGTGGGAAAGATACCAACCAATCAGCTATAAAATCTGCACAAGGTCTGGAAATGAAGATGAAT
 TCAGAGACATGGTGACAAGGTGCAACAATGTTGGTGTCCGATTTATGTGGATGCTGTCATTAACCCAT
 GTGTGGCGCAGGCAATCCTGCAGGAACAAGCAGTACCTGTGGAAGTTACCTCAATCCAAATAACAGGGAA
 TTCCCAGCAGTTCATACTCTGCTTGGGACTTTAACGATAATAAATGTAATGGAGAAATTGATAACTACA
 ATGATGCTTATCAGGTCAGAAATGTGCTGCTGACTGGCCTTCTGGATCTTGCACTTGAGAAAGATTATGT
 TCGTACCAAGGTGGCTGACTATATGAACCATCTCATTGACATTGGAGTAGCAGGGTTCAGACTTGATGCT
 GCTAAGCACATGTGGCCTGGAGACATAAAGGCAGTTTTGGACAAACTGCATAATCTCAATACAAAATGGT
 TCTCCAAGGAAGCAGACCTTTCATTTTCCAAGAGGTCATTGATCTGGTGGTGAGGCAATTAAGGTAG
 TGAGTACTTTGGAAATGGCCGTGTGACAGAATCAAGTATGGTGCAAACTTGGCACAGTTATCCGCAAG
 TGGAAATGGCGAGAAGATGTCCTATTTAAAGAACTGGGAGAAAGGTTGGGTTTGGTGCCTTCTGACAGAG
 CCCTTGTGTTTGTGGACAACCATGATAATCAGCGAGGACATGGTCTGGAGGATCATCCATCCTGACATT
 CTGGGATGCTAGAATGTATAAAATGGCTGTCCGATTTATGTTGGCTCATCCTTATGGATTCACAAGAGTA
 ATGTCAAGTTACGTTGGAATAGAAATTTCCAGAATGGAAAAGATCAGAATGACTGGATTGGACCACCCA
 ATAACAATGGAGTAACAAAAGAAGTGACCATTAATGCAGACACTACTTGTGGCAATGACTGGGCTGTGA
 ACACAGATGGCGTCAAATCAGGAACATGGTTCCTTTCAGGAATGTGGTCAATGGTCAGCCTTTTTCAAAC
 TGGTGGGATAATAACAGCAACCAAGTAGCTTTTAGCAGAGGAAACAGAGGATTATTGTCTTTAAACAATG
 ATGACTGGGCTTTGTGAGCCACTTTACAGACTGGTCTTCTGCTGGCACATACTGTGATGTCATCTCTGG
 AGATAAGGTGATGGCAATTGCACTGGACTTAGAGTGAATGTTGGCAGTATGGCAAAGCTCACTTTTCC
 ATTAGTAACCTGCTGAGGACCCATTTATTGCAATCCATGCTGACTCAAATTG

ACGCGTACGCGGCCGCTCGAG – GFP Tag – GTTTAA

Protein Sequence:

>MG215408 representing NM_001160150
 Red=Cloning site Green=Tags(s)

MKFLVLLSLIGFCWAQYDPHTSDGRTAIVHLFEWRWVDIAKECERYLAPKGGVQVSPNENNVVHNPS
 RPWWERYQPISYKICTRSGNEDEFDMVTRCANNVGVRIYVDAVINHMCGAGNPAGTSSTCGSYLNPNNRE
 FPAVPYSAWDFNDNKCNGEIDNYNDAYQVRNCRLTGLLDLALAKDYVRTKVADYMNHLIDIGVAGFRLDA
 AKHMWPGDIKAVLDKLNHLNWKWFSQGSRPFIFQEVIDLGGEAIKGSEYFNGRVTTEFKYGAALGTVIRK
 WNGEKMSYLKNWGEWGLVPSDRALVFVDNHDNRGHGAGGSSILTFWDARMYKMAVGFMLAHPYGFTRV
 MSSYRWNRNFQNGKDQNDWIGPPNNGVTKEVTINADTTGNDWVCEHRWRQIRNMVAFRNVVNGQPFNS
 WWDNNSNQVAFSRGNRGI VFNNDWALSATLQTLGTPAGTYCDVISGDKVDGNCTGLRVNVGSDGKAHFS
 ISNSAEDPFIAIHADSKL

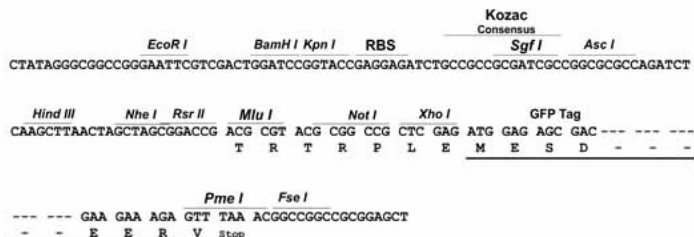
TRTRPLE – GFP Tag – V

Restriction Sites:

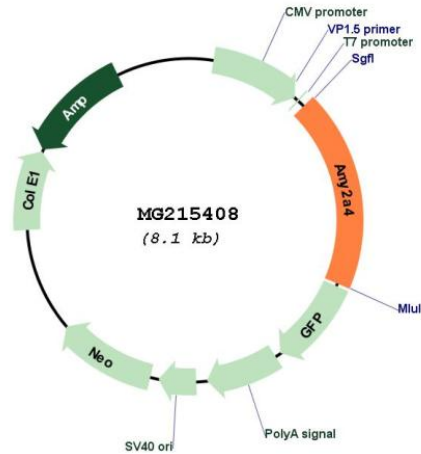
Sgfl-MluI

Cloning Scheme:

Cloning sites used for ORF Shutting:



Plasmid Map:



ACCN: NM_001160150

ORF Size: 1524 bp

OTI Disclaimer: The molecular sequence of this clone aligns with the gene accession number as a point of reference only. However, individual transcript sequences of the same gene can differ through naturally occurring variations (e.g. polymorphisms), each with its own valid existence. This clone is substantially in agreement with the reference, but a complete review of all prevailing variants is recommended prior to use. [More info](#)

OTI Annotation: This clone was engineered to express the complete ORF with an expression tag. Expression varies depending on the nature of the gene.

Components: The ORF clone is ion-exchange column purified and shipped in a 2D barcoded Matrix tube containing 10ug of transfection-ready, dried plasmid DNA (reconstitute with 100 ul of water).

Reconstitution Method:

1. Centrifuge at 5,000xg for 5min.
2. Carefully open the tube and add 100ul of sterile water to dissolve the DNA.
3. Close the tube and incubate for 10 minutes at room temperature.
4. Briefly vortex the tube and then do a quick spin (less than 5000xg) to concentrate the liquid at the bottom.
5. Store the suspended plasmid at -20°C. The DNA is stable for at least one year from date of shipping when stored at -20°C.

RefSeq: [NM_001160150.1](#), [NP_001153622.1](#)

RefSeq Size: 3723 bp

RefSeq ORF: 1527 bp

Locus ID: 100043684

UniProt ID: [P00688](#)

Cytogenetics: 3