

Product datasheet for **MG215402**

Cntnap5b (NM_172851) Mouse Tagged ORF Clone

Product data:

Product Type:	Expression Plasmids
Tag:	TurboGFP
Symbol:	Cntnap5b
Synonyms:	C230078M14Rik; Caspr5-2
Mammalian Cell Selection:	Neomycin
Vector:	pCMV6-AC-GFP (PS100010)
E. coli Selection:	Ampicillin (100 ug/mL)

ORF Nucleotide Sequence: >MG215402 representing NM_172851
Red=Cloning site Blue=ORF Green=Tags(s)

TTTTGTAATACGACTCACTATAGGGCGGCCGGGAATTCGTCGACTGGATCCGGTACCGAGGAGATCTGCC
GCCCGCATCGCC

ATGGATTCTGTACCAAGACTGACCAGCATTTTGACTTTGGTGTCTGGCTTGTGGCACGTTGGATTAA
CAGCGACAATTACAATTGTGATGACCCATTGGCCTCTTTCCTCTCACCGAAGGCTTTCTCCAGTTCCTC
AGATCTCACTGGAAGTTCAGCTCAGCTCAACTGAATGGGAGAATGGGAAGTGGTGGTTGGTCTCCAGAA
AATCCAGTGCCCATCAGTGGCTGCAGTTGGACCTGGGAAACAGAGTAGAGATTACAGCAGTGGCCACAC
AGGGAAGATATGGGAGCTCTGACTGGGTGACAAGCTATTGCCTGATATTCAGCGACACAGGGCACAACTG
GCAACAGTACAAGCAAGGAGACAGCATCTGGACATTTATAGGAAACATGAATGCTAACAGTGTAGTTCAC
CACAAGCTACTGCACGCTGTGAGAGCCGCTTTGTTTCGCTTTGTGCCCTTGGAAATGGAATCCAAACGGAA
AGATTGGCATGAGAGTGGAGTCTATGGATGCTTACAAAACAGATGTTGCTGACTTTGATGGCCGGAG
CTCACTTTTGTACAGTTCAATCAGAAGACAATGAGTACCCTCAAAGATGTGATCTCCCTGAAATTCAG
AGCATGCAAGGAGATGGGTTCTGTTCCATGGGGAAGGACAACGTGGAGACCACATCACCCCTAGAGCTCC
AGAATGGAAGACTAGCCCTATACCTGAACCTGGATGATAGCAAAGCCCGCTCAGTAGTATTACACCCCTC
AGCCATTCTGGGTAGCCTTCTGGATGACCAGCACTGGCACTCAGTTCTCCTGGAGCGTGTGGGAAAGCAA
GCAAACCTCACTGTGGACAGGAACACCCAGCACTTTCCGACCAACGGTGACACTGATGCCCTGGACATCG
ACTATGAGCTCAGTTTTGGAGGAATTCAGTACCAAGTAAACCTGGGACCTTTTTAAAGAAAAAATTCCA
AGGCTGTATTGAAAACCTTTACTACAATGGAGTGAACATAATTGACTTGGCTAAAAGACGCAAGCATCAG
ATCTACTCCGCAATGTCACCTTTTCTGCTCAGAACCACAAATTGTACCTATCACATTTGTCAACTCCA
GGAGCAGTTATTTGCTGTACCTGGCACCCCAAAATTGATGGTCTATCAGTGAGTTTCCAGTTTTCGAAC
ATGGAATGAGGATGGTCTGCTTCTGTCCACAGAGCTGTCTGAAGGCTCAGGAACCCCTGCTGCTCATTCTG
GAGGGCGGGACTCTGAGACTCCTGATTAAGAACGTGGCAGGACATGGAAGTCAAAGCCTCACAGGCAGAA
GCTTGAATAATGGCCAGTGGCATTCTGTCAACATCAATGCAAGGAGAAATCGTGTACTCTCACACTGGA
TAATGATCCTGCTTCTCCAGCTCTGGAAACCCCTGGCTACAGATATTTCTGGATATAGTTACTACTTT
GGAGGGTGCCCTGACAATCTCACCGATTCCCAATGCTTAAATCCCATTAAGGCTTTCCAAGGCTGCATGA



GGCTCATCTTTATTGATAACCAGCCCAAGGACCTCATTTTCAGTTCAGCAAGGTTCCCTGGGGAATTTAG
TGATTTACACATTGATCTGTGTAGCATCAAAGACAGGTGTTTCCCAACTACTGTGAACATGGAGGACAC
TGTACTCAAACCTGGACAAACTTCTACTGCAACTGCAGTAATACTGGTTACACAGGACCCACCTGTCATG
ATTCCATCTATGAGCAATCCTGTGAGGTATACAGACACAGAGGAAACACAGCTGGGTACTTCTATGTTGA
CTCTGATGGGAGCGGCCACTGAGACCACTCCAGGTGTACTGCAATGTTACTGAGGACAAGATCTGGATG
ACGTTCAACACAACAACAGAGTTGACTTGGATACAGGGTTC AACACTGAGAAACCCATATGTCATGA
ACTTAAATTATGGTGGGAGTATGGAGCAGCTGGAGGCTCTGATTGATGGCTCAGAGCACTGTGAACAGGA
GGTAACATACTACTGTAGGAGATCACACCTGCTTAACACACAGATGGAGCCCCATTTGCCCTGGTGGACT
GGGAGGTCCATGAGAGGCACCTTACTGGGGAGGTTATTTTCTGGAGACCAGAAGTGTGGATGTGGCC
TAGAGGAGAGCTGCCTGGAGATGTCAAACGATACTGGTTTTCTTCTTCAAAGATCACTTGCCTGTAAC
TCAGATAATTATCAGTGATACCAACAGATCAAACCTCAGAAGCAGCTTGGAGAATTGGCCCCCTGGCTTGC
TATGGTGACCGACACTTCTGGAATGCTGTCTATTTTCTACTGAAGCTGCTTACCTCCACATTCTCCTACCT
TCCATGCAGAAATCAGCGCTGATATTTCTTCTTTTTTAAAACCACTGCTTATCTGGCGTTTTCTCTAGA
AAACCTTGGCGTAAAACTTCTCCGACTTGAATGAGCTCTCTTCTGAAGTCATATTCGCCATTGAT
GTTGGGAATGGTCTATGGAACCTTGTCCAGTCTCCTTATCTCTGAATGACAACCAATGGCATTACA
TCCAGGCTGAGAGAAACATCAAGGAGACCTTATTACATGTAGACAACCTTCCGAAGAGTATGAGGATGGC
CTCAGAGGAAGGCCATTTTCTGCTTCAAGTGAATAGCCAGTTGTTTGTAGGGGGGACATCATCAAGACAG
AAAGGCTTCTTGGATGCATCCGTTTACACTTGAATGGCAGAAAGTAGACCTGGAAGAGAGGGCAA
AGATCACATCTGGAGTCAAGCTGGCTGTGCAGGTCACTGCAACAGCTATGGAAGGAACTGCCAAAATGG
GGCAAGTGTGTGAGAAAGCATATTGGCTACACCTGTGACTGTACCAACTCACCATATGAAGGACCTTTC
TGCAAGAAAGAGATTTCAAGCACTTTTTTATTCTGGGACCTCTGTTACATACATGTTTCAAGAACCATAAC
CGGTGACCAAGAACAAGCCTCTCATCTTCAAGTATCTACAAGATACAGCTCCATCCAAGGAAGCCAT
CACACTGAGTTTTATGACAGCACAAGCTCCACCCTTGTCTACCTCAATTTCTTCTCAGAAATTTT
CTGGCTATTCTGCTCTCCAGGAATGGAAGTTTACAGATTCAATATCGACTAAGCAAGGAAAGAAAGTCATG
TGTTACCATCAGCACAGAGAATCTTGCCAATAGAAGAGTACACCAGGTGAAGATGAGCCGAGATGGGCC
AGAATTTCCATTGAGTGGACCAGCAACTCTTCAAGTATAACTTCCCCCAGAAGTGGAGTTCCAAACA
GAGGAGTCACTCATCTAGGCAAAGTTACAGAACTCTGGGTTGGATCCAGAAGTTGCTAAAGCAAATA
CACTGGGTTTTGTTGGATGCCTCTTCTCAGTCCAATATAACCATATCGCACCATTGAAGGCAGCCCTCCG
CCATGCCAGCATTCTCTGTGACTGTTCAAGGGACTTTGACAGAGTCCAGCTGTGACTCCATGATAGAC
TCTGATGTGACTGGAGTACTACTGTTTATCTCCATCAGTCCCTTTGGAAAGACAGATGAGCATGAAC
CACTCAAAATACAATCCAGAGTACTCAGCATTATTGGAGGTGTCATAGCAATTGTAACATTTATCAC
TTTTTGTGCTTGGAAATCATGGTGCATCTCTATCAGCAAAAGCAGTCACACCGTACCAATCAGATG
AAGGAGAAGGAATACCCAGACAACCTGGACAGTTCCTTTAGAAATGACATTGACTTGCAAAAACAGCCA
TCGAGTGCAAAACGGGAATACTTCATC

ACGCGTACGCGGCCGCTCGAG - GFP Tag - GTTTAA

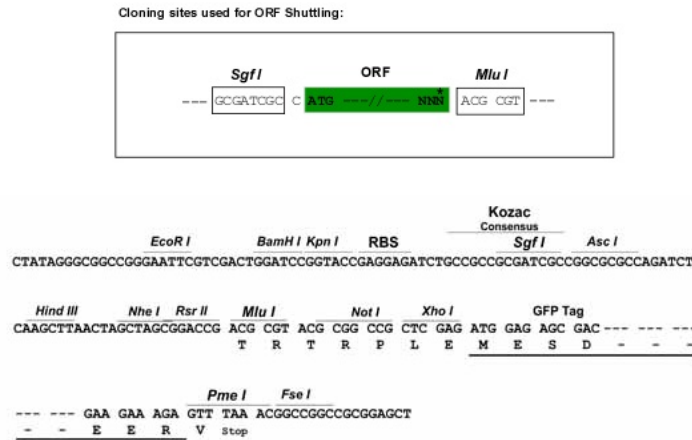
Protein Sequence: >MG215402 representing NM_172851
 Red=Cloning site Green=Tags(s)

MDSVPRLTSILTLVLSGLWHVGLTATNYNCDDPLASFLSPKAFSSSSDLTGSSSSAQLNGRMGTGGWSPE
 NSSAHQWLQLDLGNRVEITAVATQGRYSSDWVTSYCLIFSDTGHNWQYKQGD SIWTFIGNMNANSVH
 HKLLHAVRARFVRFVPLEWNPNGKIGMRVEVYGC FYKSDVADFDRSSLLYRFNQKTMSTLKDVISLKFK
 SMQGDGVL FHGEGQRGDHITL ELQNGRLALYLNLDSSKARLSSITPSAILGSLDDQHWSVLLERVGKQ
 ANFTVDRNTQHFRNGD DALDIDYEL SFGGIPVPSKPGTFLKKNFQGC IENLYYNGVNIIDLAKRRKHQ
 IYSGNVTFSCSEPQIVPITFVNSRSSL LLLPGTPQIDGLSVSFQFRTWNEDG LLLSTELSEGSGTLLIL
 EGGTLRLLIKNVAGHGTESL TGRSLNNGQWHSVINARRNRVTL TLDNDPASPALET PWLQIYSGSYFF
 GGCPDNL TDSQCLNPIKAFQGC MR LIFIDNQPKDLISVQQGS LGNFSDLHIDLCSIKDRCFPNYCEHGGH
 CTQTWTFNYCNSNTGYTGATCHDSIYEQSC EVYRHRGNTAGYFYVDS DSGSGPLRPLQVYCNVTEDKIWM
 TVQHNTEL TWIQGSNTEKPYVMNLNYGGSMEQLEALIDGSEHCEQEVTYYCRRSHLLNTPDGAPFAWWT
 GRSNERHPYWGYPGDQKCGCGLEESCLEMSNDTGFLSFKDHL PVTQIIISDTNRSNSEAAWRIGPLRC
 YGDRHFWNAVFS TEAAYLHIPTFHAEFSADISFFFKTTALSGVFL ENLGVKNFLRLEMSSPSEVIFAID
 VNGNPMELLVQSPYPLNDNQWHYIQAERNIKETLLHVDNL PKSMRMA SEEGHFLQLNSQLFVGGTSSRQ
 KGFLGCIRSLHLNGQKVDLEERAKITSGVRPGCAGHCNSYGRNCQNGGKVEKHIGYTCDC TNSPYEGPF
 CKKEISALFYSGTSV TYMFQEPYPVTKNTSLSSSAIYKDTAPSKEAITL SFMTAQAP TLLL YLNFSSQNF
 LAILL SRNGLQIQYRLSKEESHVFTISTENLANRRVHVQKMSRDGPELSIQMDQQLF SYNFPPEVEFQT
 VRSLILGKVTETLGLDPEVAKANTLGFVGLSSVQYNHIAPLKAALRHASISPVTVQGTLT ESSCD SMID
 SDVTGVTTVYSPSVPFGKTDEHEPLTNTIQSDSAFIGGVIAIVTFITFCVLGIMVHFLYQQKQSHRTNQM
 KEKEYPDNLDSSFRNDIDLQNTAIECKREYFI

TRTRPLE - GFP Tag - V

Restriction Sites: SgfI-MluI

Cloning Scheme:

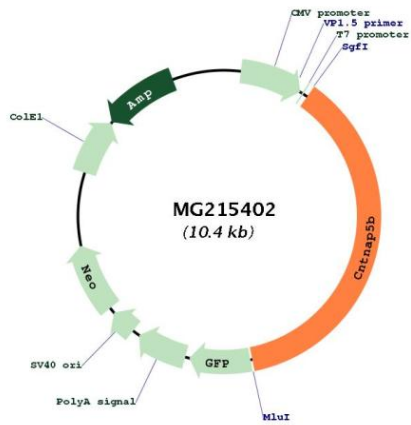


ACCN: NM_172851

ORF Size: 3876 bp

OTI Disclaimer:	The molecular sequence of this clone aligns with the gene accession number as a point of reference only. However, individual transcript sequences of the same gene can differ through naturally occurring variations (e.g. polymorphisms), each with its own valid existence. This clone is substantially in agreement with the reference, but a complete review of all prevailing variants is recommended prior to use. More info
OTI Annotation:	This clone was engineered to express the complete ORF with an expression tag. Expression varies depending on the nature of the gene.
Components:	The ORF clone is ion-exchange column purified and shipped in a 2D barcoded Matrix tube containing 10ug of transfection-ready, dried plasmid DNA (reconstitute with 100 ul of water).
Reconstitution Method:	<ol style="list-style-type: none">1. Centrifuge at 5,000xg for 5min.2. Carefully open the tube and add 100ul of sterile water to dissolve the DNA.3. Close the tube and incubate for 10 minutes at room temperature.4. Briefly vortex the tube and then do a quick spin (less than 5000xg) to concentrate the liquid at the bottom.5. Store the suspended plasmid at -20°C. The DNA is stable for at least one year from date of shipping when stored at -20°C.
Note:	Plasmids are not sterile. For experiments where strict sterility is required, filtration with 0.22um filter is required.
RefSeq:	NM_172851.3
RefSeq Size:	5120 bp
RefSeq ORF:	3879 bp
Locus ID:	241175
UniProt ID:	Q0V8T8
Cytogenetics:	1 E1.1
Gene Summary:	May play a role in the correct development and proper functioning of the peripheral and central nervous system and be involved in cell adhesion and intercellular communication. [UniProtKB/Swiss-Prot Function]

Product images:



Circular map for MG215402