

Product datasheet for **MG215386**

Heph (NM_010417) Mouse Tagged ORF Clone

Product data:

Product Type:	Expression Plasmids
Tag:	TurboGFP
Symbol:	Heph
Synonyms:	C130006F04Rik; Cpl; mKIAA0698; sla
Mammalian Cell Selection:	Neomycin
Vector:	pCMV6-AC-GFP (PS100010)
E. coli Selection:	Ampicillin (100 ug/mL)

ORF Nucleotide Sequence: >MG215386 representing NM_010417
Red=Cloning site Blue=ORF Green=Tags(s)

TTTTGTAATACGACTCACTATAGGGCGCCGGGAATTCGTGACTGGATCCGGTACCGAGGAGATCTGCC
GCCGCGATCGCC

ATGAAGGCAGGCCATCTTCTCTGGGCTTTACTGTTGATGCACTCCTTGTGGTCTATACCAACTGATGGGG
CCATTCGAAACTACTACTTGGGCATCCAGGATATGCAGTGGAACTATGCTCCCAAAGGAAGAAATGTCAT
CACAAATCAGACTCTCAACAATGACACAGTGGCTTCCAGTTTCTGAAGTCTGGCAAAAACAGGATAGGG
AGTAGTTACAAGAAGACTGTTTATAAGGAATACAGTGTGGCACATACACTGAAGAAATAGCCAAGCCTG
CCTGGTTGGGCTTCTAGGACCACTGTTACAGGCTGAGGTGGGGGATGTCATCTTGATTACCTGAAGAA
TTTTGCGAGCCGACCTTACACCATTACCCTCACGGTGTTTTTATGAGAAGGACTCAGAAGGCTCACTA
TACCCAGATGGTCTTCTGGGTATCTGAAAGCGGATGATTCTGTCCCCCTGGGGCAGCCATGTCTACA
ACTGGAGTATCCAGAAAGTCATGCCCCACTGAGGCAGACCAGCATGCCTCACCTGGATTACCCTC
GCATGTAGATGCTCCAAGAGACATTGCAACTGGTCTCATTGGACCTTATCACCTGTAAAAGAGGGACC
CTGGATGGTAATCCCCACCTCAGAGGAAGGATGTGGACCATAATTTCTTCTCTCTTTCAGTGTGATAG
ATGAGAACCTTAGCTGGCACCTTGTGACAACATTGCTACTTACTGCTCAGACCCTGCCTCGGTGGCAA
AGAAGATGGAGCCTTTCAAGACAGCAACAGGATGCATGCAATCAATGGGTTTGTCTTTGGGAACCTACCA
GAGTTGAGCATGTGTGCACAGAAGCATGTGCCCTGGCACTTGTTTGGCATGGGCAATGAAATAGATGTCC
ACACAGCTTTCTTCCATGGACAGATGCTGAGTATCCGTGGACACCACACTGATGTTGCAAACATTTTTCC
AGCTACCTTTGTGACTGCTGAGATGGTGCCTTCAAGGTTGACTCTTGTCCATGGACCCACCTGTGGACC
AGCCACTTGAGAAGTGGCATGCAGGCCTTCTACAAGTTGACTCTTGTCCATGGACCCACCTGTGGACC
AGCTCACTGGCAAAGTTCGTCACTTCACTTCAAGGCCATGAGATTCAATGGGACTATGGTCCAATAGG
GTATGATGGCAGAAGTGGGAAGAGTTTGGAGAGCCAGGAAGTGGCCAGATAAGTACTTCCAGAAGAGC
TCTAGTCGAATTGGAGTACTTACTGGAAGTTTCGATATGAAGCCTTTCAAGATGAGACATTCCAGGAAA
GGGTACATCAGGAAGAAGAAACACATCTTGAATACTGGGACCAGTGATAAGGGCTGAAGTGGGTGACAC
CATCCAGGTGGTCTTCTATAACCGTGCCTCCAGCCATTGACATACAGCCCATGGTGTCTTTTATGAG
AAAACTCTGAGGGCACCGTGTACAATGATGGCACATCTCATCCCAAAGTAGCCAAGTCATTTGAAAAAG



TCACATACTACTGGACGGTTCCTCCCATGCTGGGCCACTGCTCAGGATCCTGCCTGTCTAACCTGGAT
 GTACTTCTCTGCTGCAGATCCCACAAGAGATACAAATCTGGCCTGGTGGGCCCTCTACTGGTGTCAAG
 GCTGGGGCCTTGGGTGCAGATGGCAAGCAGAAAGGAGTGGATAAAGAATTTTTCTCCTCTTCACTGTGT
 TTGATGAGAAATGAGAGCTGGTACAACAGTGCCAATCAGGCAGCTGGTATGTTGGATTCCCGACTGCTC
 AGAGGATGTCGAGGGCTTCCAGGACTCCAATCGAATGCATGCTATTAATGGATTCTGTTCTCTAACCTG
 CCCAGGCTGGACATGTGCAAGGGTGATACTGTGGCCTGGCACCTGCTTGGCCTGGGCACAGAGACTGATG
 TACATGGGGTAATGTCGAGGGCAACTGTGCAGCTTCAGGGCATGAGGAAAGGTGCAGTCATGCTCTT
 TCCTCACACCTTTGTGACGGCCATCATGCAGCCTGACAATCCTGGAATATTTGAAATCTACTGCCAAGCA
 GGCAGCCACCAGAGGAAGGGATGCAGGCAATTTATAATGTCTCTCAGTGTCTAGTCATCAAGCAGCC
 CACGCCAACACTACCAAGCTTCAAGAGTCTACTATATCATGGCAGAAGAGATAGAGTGGGATTACTGCC
 TGATAGAAGCTGGGAACCTGGAATGGCATAACACATCTGAGAAAGACAGCTATGGCCATGTTTTCTGAGC
 AATAAAGATGGGCTCCTGGTTCCAAATATAAGAAAGCTGTATTCAGGGAATACACTGATGGTACTTTCA
 GAATACCTCGGCCAAGGTCTGGACCAGAGGAGCACTTGGGAATCCTGGGTCACCTTATCAGAGGAGAGGT
 TGGTGATATCTTGACTGTAGTGTCAAGAATAAGGCCAGTCGACCATATTCTATACATGCCCATGGAGTT
 CTAGAATCTAACACTGGCGGGCCACAGGCTGCTGAGCCTGGTGAAGTACTTACTACCAGTGAACATCC
 CAGAAAAGATCTGGTCTGGTCTAGTGACTCTGCTTGTGTTTCTGGATTATTATTCTGCAGTGGATCC
 CATCAAGGACATGTATAGTGGTCTGGTTGGACCCCTAGTCATCTGCAGAAATGGTATCTTGGAAACCAAT
 GGAGGCCGGAATGATATGGACCGGGAATTTGCCTTGTGTTTTGATCTTTGATGAGAACCAATCTTGGT
 ATCTGAAGGAGAATATTGCAACATATGGACCTCAAGAAATCAAGTCAATGTTAACTTGAAGGATGCCACCT
 CCTAGAGAGCAATAAAATGCATGCTATCAATGGGAAACTCTATGCAAACCTCAGGGGTCTTACTGTATAC
 CAAGGAGAACGAGTAGCCTGGTACATGCTAGCCATGGGCCAAGATACTGACATTCACACTGTACACTTCC
 ATGCAGAGAGTTTCTCTATCAGAATGGGCAAAGTTACAGGGCAGATGGTGGATCTCTTCCAGGAAC
 ATTTGAAGTTGTGGAGATGGTAGCCAGCAACCCCTGGGACATGGCTGATGCACTGCCATGTGACTGACCAT
 GTTCATGCTGGCATGGAGACCATCTTACGGTCTTGTCTCATGAAGAACATTTAGCACTATGACCACTA
 TTAATAAGAGATTGAAAAGTGATTCTAAGGGACATTGGAGGTGACAATGTGAAGATGCTGGGCATGAA
 CATTCCCATAAAGGATGTAGAGATTCTGTCTTCTGCTTTGATTGCCATATGTGTGCTTCTGTTGCTCATT
 GCTCTGGCTCTTGGTGGTGTAGTCTGGTACCAGCATCGAAAAGAAAGCTTCGGCGCAACAGGAGGTCCA
 TTCTTGATGATAGCTTCAAGCTTCTCTCTCAAGCAA

ACGCGTACGCGGCCGCTCGAG - GFP Tag - GTTAA

Protein Sequence:

>MG215386 representing NM_010417
 Red=Cloning site Green=Tags(s)

MKAGHLLWALLLMHSLWSIPTDGAIRNYLGIQDMQWNYAPKGRNVITNQTLNNDTVASSFLKSGKNRIG
 SSKYKTVYKEYSDGTYTEEIAKPAWLGFLGPLLQAEVGDVILIHLKNFASRPYTIHPHGVEYKDESEGL
 YPDGSSGYLKADDSVPPGGSHVYNWSIPESHAPTEADPACLTWIYHSHVDAPRDIATGLIGPLITCKRGT
 LDGNSPPQRKDVDFHNFLLFSVIDENLSWHLDDNIATYCDPASVDKEDGAFQDSNRMHAINGFVFNLP
 ELSMCAQKHVAWHLFGMGNEIDVHTAFFHQML SIRGHHTDVANIFPATFVTAEMVPQKSGTWLISCEVN
 SHLRSGMQAFYKVDSCSMDPPVDQLTGKVRQYFIQAHEIQWDYGPYIGYDGRGTGKSLREP GSGPDKYFQKS
 SSRIGGTYYKVRVEAFQDETFQERVHQEEETHL GILGPVIRAEVGDIIQVVFYNRASQPF SIQPHGVFYE
 KNSEGTVYNDGTSHPKVAKSFEKVYTYWTVPPHAGPTAQDPACLTWMYFSAADPTRDTNSGLVGPLLVCK
 AGALGADGKQKGVDKEFFLLFTVFDENESWYNSANQAAGMLDSRLLSEVVEGFQDSNRMHAINGFLF SNL
 PRLDMCKGDTVAVHLLGLGETDVGVMFEGNTVQLQGMKRGAVMLFPHTFVTAIMQPDNPGIFEIYQCA
 GSHREEGMQAIYNVSQCSSHQDSPRQHYQASRVYIIMAEIEWDYCPDRSWELEWHNTSEKDSYGHVFLS
 NKDGLLGSKYKKAFFREYTDGTFRIPRPRSGPEEHLGILGPLIRGEVGDILTVVFNKASRPYSIHAHV
 LESNTGGPQAAPGEVLYQWNIPIERSGPGSDSACVSWIYYSAVDPIKDMYSGLVGPLVICRNGILEPN
 GGRNDMDREFALLFLIFDENQSWYLNENIATYGPQESSHVNLDATFLESNMHAINGKLYANLRGLTVY
 QGERVAWYMLAMGQDIDIHTVHFHAESFLYQNGQSYRADVVDLFPGTFEVVMVASNPGTWLMHCHVTDH
 VHAGMETIFTVLSHEEHFSTMTTITKEIGKVLIRDIGGDNV KMLGMNIPIKDVEILSSALIAICVLLLLI
 ALALGGVVWYQHRQRKLRNRRSILDDSFKLLSLKQ

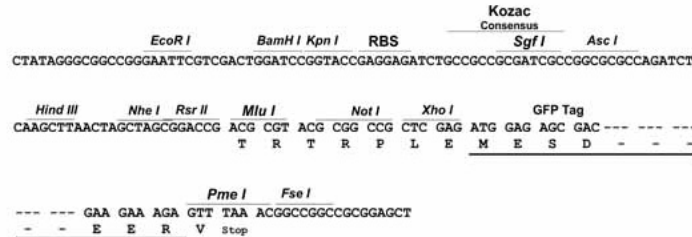
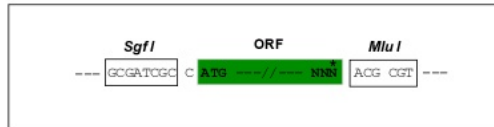
TRTRPLE - GFP Tag - V

Restriction Sites:

SgfI-MluI

Cloning Scheme:

Cloning sites used for ORF Shutting:


ACCN: NM_010417

ORF Size: 3468 bp

OTI Disclaimer: The molecular sequence of this clone aligns with the gene accession number as a point of reference only. However, individual transcript sequences of the same gene can differ through naturally occurring variations (e.g. polymorphisms), each with its own valid existence. This clone is substantially in agreement with the reference, but a complete review of all prevailing variants is recommended prior to use. [More info](#)
OTI Annotation: This clone was engineered to express the complete ORF with an expression tag. Expression varies depending on the nature of the gene.

Components: The ORF clone is ion-exchange column purified and shipped in a 2D barcoded Matrix tube containing 10ug of transfection-ready, dried plasmid DNA (reconstitute with 100 ul of water).

- Reconstitution Method:**
1. Centrifuge at 5,000xg for 5min.
 2. Carefully open the tube and add 100ul of sterile water to dissolve the DNA.
 3. Close the tube and incubate for 10 minutes at room temperature.
 4. Briefly vortex the tube and then do a quick spin (less than 5000xg) to concentrate the liquid at the bottom.
 5. Store the suspended plasmid at -20°C. The DNA is stable for at least one year from date of shipping when stored at -20°C.

Note: Plasmids are not sterile. For experiments where strict sterility is required, filtration with 0.22um filter is required.

RefSeq: [NM_010417.2](#), [NP_034547.2](#)

RefSeq Size: 4693 bp

RefSeq ORF: 3474 bp

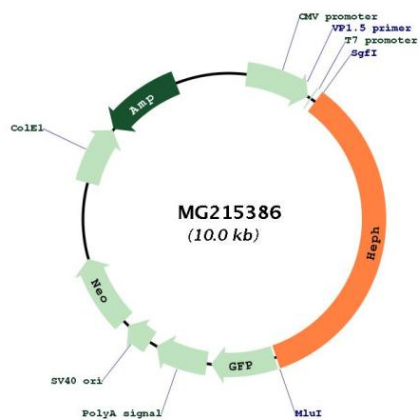
Locus ID: 15203

UniProt ID: [Q9Z0Z4](#)

Cytogenetics: X 42.69 cM

Gene Summary: May function as a ferroxidase for ferrous (II) to ferric ion (III) conversion and may be involved in copper transport and homeostasis. Implicated in iron homeostasis and may mediate iron efflux associated to ferroportin 1.[UniProtKB/Swiss-Prot Function]

Product images:



Circular map for MG215386