

Product datasheet for **MG215385**

Rgs12 (NM_001163512) Mouse Tagged ORF Clone

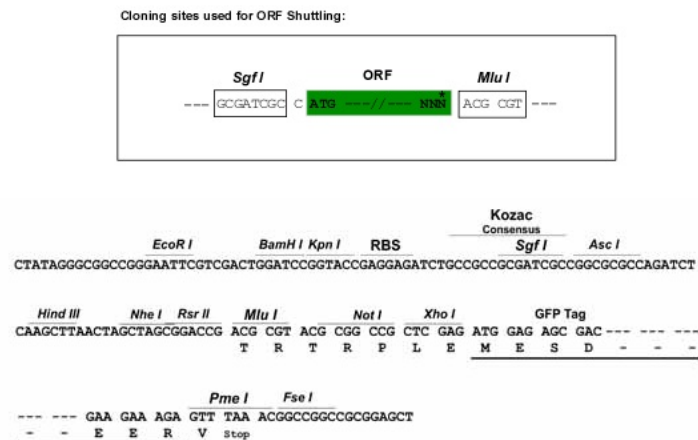
Product data:

Product Type:	Expression Plasmids
Tag:	TurboGFP
Symbol:	Rgs12
Synonyms:	1200016K18Rik; 4632412M04Rik; AI481290; E130309H11
Mammalian Cell Selection:	Neomycin
Vector:	pCMV6-AC-GFP (PS100010)
E. coli Selection:	Ampicillin (100 ug/mL)



Restriction Sites: SgfI-MluI

Cloning Scheme:



ACCN: NM_001163512

ORF Size: 2169 bp

OTI Disclaimer: The molecular sequence of this clone aligns with the gene accession number as a point of reference only. However, individual transcript sequences of the same gene can differ through naturally occurring variations (e.g. polymorphisms), each with its own valid existence. This clone is substantially in agreement with the reference, but a complete review of all prevailing variants is recommended prior to use. [More info](#)

OTI Annotation: This clone was engineered to express the complete ORF with an expression tag. Expression varies depending on the nature of the gene.

Components: The ORF clone is ion-exchange column purified and shipped in a 2D barcoded Matrix tube containing 10ug of transfection-ready, dried plasmid DNA (reconstitute with 100 ul of water).

Reconstitution Method:

1. Centrifuge at 5,000xg for 5min.
2. Carefully open the tube and add 100ul of sterile water to dissolve the DNA.
3. Close the tube and incubate for 10 minutes at room temperature.
4. Briefly vortex the tube and then do a quick spin (less than 5000xg) to concentrate the liquid at the bottom.
5. Store the suspended plasmid at -20°C. The DNA is stable for at least one year from date of shipping when stored at -20°C.

Note: Plasmids are not sterile. For experiments where strict sterility is required, filtration with 0.22um filter is required.

RefSeq: [NM_001163512.1](#), [NP_001156984.1](#)

RefSeq Size: 3434 bp

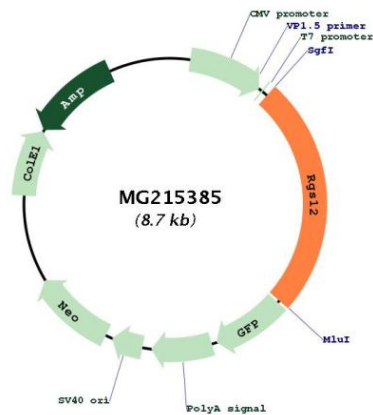
RefSeq ORF: 2172 bp

Locus ID: 71729

Cytogenetics: 5 17.96 cM

Gene Summary: Regulates G protein-coupled receptor signaling cascades. Inhibits signal transduction by increasing the GTPase activity of G protein alpha subunits, thereby driving them into their inactive GDP-bound form.[UniProtKB/Swiss-Prot Function]

Product images:



Circular map for MG215385