

Product datasheet for **MG215366**

Stpg4 (NM_029298) Mouse Tagged ORF Clone

Product data:

Product Type:	Expression Plasmids
Tag:	TurboGFP
Symbol:	Stpg4
Synonyms:	1700011E24Rik; GSE
Mammalian Cell Selection:	Neomycin
Vector:	pCMV6-AC-GFP (PS100010)
E. coli Selection:	Ampicillin (100 ug/mL)

ORF Nucleotide Sequence: >MG215366 representing NM_029298
Red=Cloning site Blue=ORF Green=Tags(s)

TTTTGTAATACGACTACTATAGGGCGCCGGGAATTCGTCGACTGGATCCGGTACCGAGGAGATCTGCC
GCCGCGATCGCC

ATGCCGAGCCAACCGTTGTCATAGCCCCACCACGTACCAAGAGAAGACCTGGGACATGGGGAGCCGC
TCCTCATGACTGCGAAACAAGTCAAGAAGACGCCAGGTCTTGAGAGAGAAGGATGGTGGAGGCTCACAAT
AACGGATACTCCGATACCTGGTACTTACCATTTAGGACTTTTACTGAAGAAGCCCTATTAACCCAGTG
AAAATAACCTACAACCTTAAAAACGAAGGGAGGAAAAAGCTCCCTCTTGTGCTGAGAAACGATCCGGTCC
CAACTGACCTCCCACAGTACAGTCTCTGACTTCTGGAGCTGCTGAAGAAGCAGACGGCCTCATACTC
TTTCAAGGACAAAACCCGGGCAGACCCAGCACACTAGTTGACAAAAGATGAGTCACTCCATCTTTGCCCG
GGACAGTACGAGGTAATCCAGCACCAGTCCCAAGAGCCCAGCCAGGAGCTTCGTATTTGCTCTTCAG
TTCAAAGATTCCCACAAATTATTTACTCCTCAGAGGCCCTGGACCAGGTGACTATGAGCTGAAGGC
ATCCCCAAAAGGCTCTATTACTTCTGTTTTCGATCTAAGGTTCCCGATTCTTACCTGTCAGTTCAAAA
ACACCAGGCCAGGAGCATACACATCTTCGAGACAGTCCCAAGCAGTCTTCAACCATTGCCAAAATGG
GTAGAGAACACAGTCTCTTCTTCAACAACAATTGGCTTT

ACGCGTACGCGGCCGCTCGAG - GFP Tag - GTTTAA



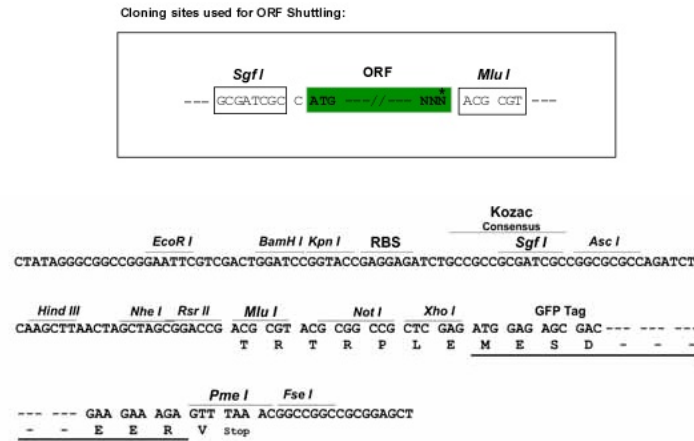
Protein Sequence: >MG215366 representing NM_029298
 Red=Cloning site Green=Tags(s)

MAEPTVVIAPTTPREDLGHGEP LLMTAKQVKKTPGLEREGWRLTITDTPIPGTYHFRTFTEEALLNPV
 KITYNFKNEGRKKLPLVLRNDPVPTDLPQYSPDFLELLKKQTASYFKDKPRADPSTLVKDESLHLCPL
 GQYEVLPAPVPKSPARFVFRSSVQRFPNRYFPHGPGPGDYELKASPKGSITSCFRSKVPRFLPVSSK
 TPGPGAYTSSRQFPKQSSSTIAKMGREHSLFFNNTIGF

TRTRPLE - GFP Tag - V

Restriction Sites: SgfI-MluI

Cloning Scheme:



ACCN: NM_029298

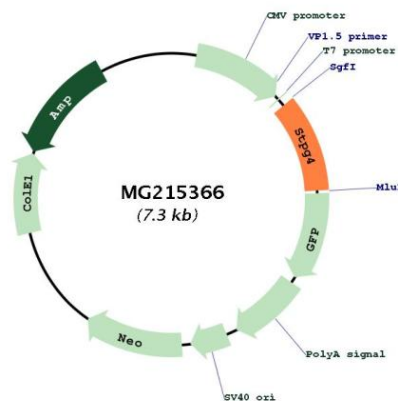
ORF Size: 741 bp

OTI Disclaimer: The molecular sequence of this clone aligns with the gene accession number as a point of reference only. However, individual transcript sequences of the same gene can differ through naturally occurring variations (e.g. polymorphisms), each with its own valid existence. This clone is substantially in agreement with the reference, but a complete review of all prevailing variants is recommended prior to use. [More info](#)

OTI Annotation: This clone was engineered to express the complete ORF with an expression tag. Expression varies depending on the nature of the gene.

Components: The ORF clone is ion-exchange column purified and shipped in a 2D barcoded Matrix tube containing 10ug of transfection-ready, dried plasmid DNA (reconstitute with 100 ul of water).

Reconstitution Method:	<ol style="list-style-type: none">1. Centrifuge at 5,000xg for 5min.2. Carefully open the tube and add 100ul of sterile water to dissolve the DNA.3. Close the tube and incubate for 10 minutes at room temperature.4. Briefly vortex the tube and then do a quick spin (less than 5000xg) to concentrate the liquid at the bottom.5. Store the suspended plasmid at -20°C. The DNA is stable for at least one year from date of shipping when stored at -20°C.
Note:	Plasmids are not sterile. For experiments where strict sterility is required, filtration with 0.22um filter is required.
RefSeq:	NM_029298.1 , NP_083574.1
RefSeq Size:	847 bp
RefSeq ORF:	744 bp
Locus ID:	75467
UniProt ID:	Q9DAG5
Cytogenetics:	17 E4
Gene Summary:	Maternal factor that plays a role in epigenetic chromatin reprogramming during early development of the zygote (PubMed:23560077). Involved in the regulation of gametic DNA demethylation by inducing the conversion of the modified genomic base 5-methylcytosine (5mC) into 5-hydroxymethylcytosine (5hmC) (PubMed:23560077). [UniProtKB/Swiss-Prot Function]

Product images:

Circular map for MG215366