

Product datasheet for **MG215361**

Slc9a6 (NM_172780) Mouse Tagged ORF Clone

Product data:

Product Type:	Expression Plasmids
Product Name:	Slc9a6 (NM_172780) Mouse Tagged ORF Clone
Tag:	TurboGFP
Symbol:	Slc9a6
Synonyms:	3732426M05; 6430520C02Rik; mKIAA0267; NHE6
Mammalian Cell Selection:	Neomycin
Vector:	pCMV6-AC-GFP (PS100010)
E. coli Selection:	Ampicillin (100 ug/mL)



[View online »](#)

ORF Nucleotide
Sequence:

>MG215361 representing NM_172780
Red=Cloning site Blue=ORF Green=Tags(s)

TTTTGTAATACGACTCACTATAGGGCGGCCGGGAATTCGTCGACTGGATCCGGTACCGAGGAGATCTGCC
GCC**CGGATCGCC**

ATGGCTGGGGCTCGGCGGGCTGGCGGCTGGCGCCGTTTCGCCGTGGCGTCTGCGGGCCCCGGGCGCGTC
CGCTCATGCGGCCCTTTGGTTGCTCTTCGCAGTGAGCTTCTTTGGCTGGACCGGGCTCTGGACGGCTC
CGGGGGAACGACCAGAGCCATGGACGAGGAGATCGTGTCCGAGAAGCAGGCGGAGGAGGCCATCGGCAG
GACAGCGCAACCTGCTCATCTTCATCCTGCTGCTCACCTCACCATTCTGACGATCTGGCTCTTCAAGC
ACCGCGGGCCCCGCTTCTGCACGAAACCGGCCTTGTATGATTTATGGTCTTTGGTAGGCCTCGTGT
TCGGTACGGCATTATGTTCCAAGCGATGTGAATAATGTGACTCTGAGCTGTGAAGTGCAGTCAAGTCCA
ACTACCTGTTGGTCAACGTGAGTGGAAAATTTATGAGTATACGCTGAAAGGAGAGATTAGCTCACATG
AACTCAACAATGTTCAAGATAATGAAATGCTTAGGAAGGTTACTTTTGATCCAGAAGTCTTTTTCAACAT
ACTGCTTCTCTATCATATTTTATGCAGGGTACAGTCTCAAAGGAGACATTTCTCCGGAACCTTGGG
TCTATCTTAGCATATGCCTTTCTTGAACAGCAATTTCTGTTTCGTTATTGGGTCCATCATGTATGGCT
GTGAACCTGATGAAGGTGACCGGCAGCTCGCGGGAGATTTTACTTTACAGATTGCTTGTGTTGG
TGCCATTGTTTACGCCACCGACCGAGTACTGTTCTTGCCATCTTCCATGAGCTTCAAGTTGACGTTGAA
CTCTACGCTCTTCTTTCGGGAAAGTGTCTCAATGACGCGGTTGCCATAGTGTGTCCTCCTCAATAG
TGGCATAACGACCGAGCGGAGACAACAGCCACACCTTTGACGTTACAGCCATGTTCAAATCTATTGGAAT
CTTCTTGGGATCTTCAAGTGGATCTTTTGAATGGGTGCTGCAACAGGCGTGGTAACAGCTTTAGTGACA
AAGTTCACAAAGCTGAGAGAGTCCAGCTGTTGGAGACAGGCCTTTCTTCTTGTGTCCTGGAGCACCT
TTCTTCTGGCTGAAGCATGGGGTTTACAGGTGTGGTTGCAGTATTGTTTTGTGGCATCACACAAGCACA
TTACACGTACAATAATTTGTCTACAGAGTCTCAGCATAGAACAAGCAGTTGTTGAGCTTCTCAATTTT
TTAGCGGAGAATTTATCTTTTCTACATGGGGCTGACGCTGTTACCTTCCAGAATCACGCTTTAACC
CAACATTTGTCGTAGGAGCATTATTGCTATTTTCTTGGGAAGAGCTGCCAATATTTATCCCTTGTCTCT
CTTACTTAATTTGGGTAGAAGAAGTAAGATTGGATCAAATTTTCAACACATGATGATGTTTGTGCTGCTT
CGTGGTGAATGGCATTGCTTGGCCATTGAGATACTGCCACTTATGCACGACAAATGATGTTTCCAGCA
CCACACTTCTGATCGTGTGTTTTACTGTGTGGTATTTGGTGGTGGCACCCTGCCATGCTGTCATGCCT
GCATATAAGGGTTGGTGTGATTGACACCAAGAACATTTGGGTGTTCTGACAACGAAAGGAGAACCACC
AAAGCAGAGAGTGCCTGGCTCTTTCGGATGTGGTACAACCTCGATCATAACTATCTGAAGCCCCTGCTGA
CCACAGTGGGCCTCCTGACTACCACACTCCCAGCCTGCTGTGGGCAATCGCCAGGTGCCTGACCAG
CCCCAAGCATATGAAAACAGGAGCAGTTGAAAGATGATGACTCTGATCTCATTCTCAATGATGGTGTAT
ATCAGTCTGACATATGGGGATTCTACTGTGAACACCGAGTCCGCAACAGCCAGCGCCCCAAGGAGATTTA
TGGGCAACAGTCTGAAGATGCCTTGGACCGGGAGCTTACATTTGGGACCACGAACTAGTCAATTCGTGG
CACACGCTGGTCTTCCGATGGATGATTCTGAACCTGCGTTAAATTCATTAGATGATACGAGACACAGT
CCGGCC

ACGCGTACGCGGCCGCTCGAG – GFP Tag – GTTTAA

Protein Sequence: >MG215361 representing NM_172780
 Red=Cloning site Green=Tags(s)

MAGARRGWRLAPVRRGVCGRPRARPLMRPLWLLFAVSFFGWTGALDGSGGTTRAMDEEIVSEKQAEESHRO
 DSANLLIFILLTLTILTIWLFKHRRARFLHETGLAMIYGLLVGLVLRYGIVHPSDVNNVTLSCVEQSSP
 TLLLVNVSQKGFYEYTLKGEISSHELNNVQDNEMLRKVTFDPEVFFNILLPPIIFYAGYSLKRRHFFRNLG
 SILAYAFGLTAISCFVIGSIMYGCVTLMKVTGQLAGDFYFTDCLLFGAIVSATDPVTVLAIFHELQVDVE
 LYALLFGESVLNDAVAIVLSSSIVAYQPAGDNSHTFDVTAMFKSIGIFLGIIFSGSFAMGAATGVVTLVT
 KFTKLRQFQLETLGFFLMSWSTFLLAEAWGFTGVVAVLFCGITQAHYTYNNLSTESQHRKQQLFELLNF
 LAENFIFSVMGLTLFTFQNHVFNPTFVVVGAFAIFLGRAANIYPLSLLNLGRRSKIISNFQHMMMFAGL
 RGAMAFALAIRDTATYARQMMFSTLLIVFFTVWVFGGGTTAMLSCHIRVGVSDQEHLPDPNERRTT
 KAESAWLFRMWFNFDHNYLKPLLTHSGPPLTTLPACCGPIARCLTSPQAYENQEQLKDDSDLIINDGD
 ISLTYGDSTVNTESATASAPRRFMGNSSEDALDRELTFGDHELVIIRGTRLVLPMDSEPALNSLDDTRHS
 PA

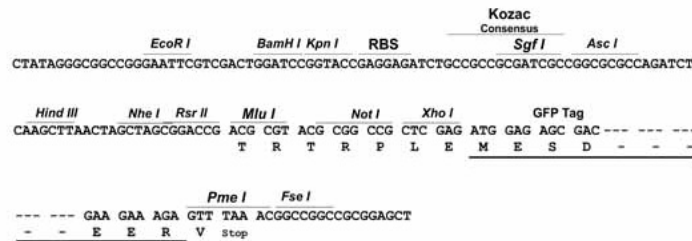
TRTRPLE - GFP Tag - V

Restriction Sites:

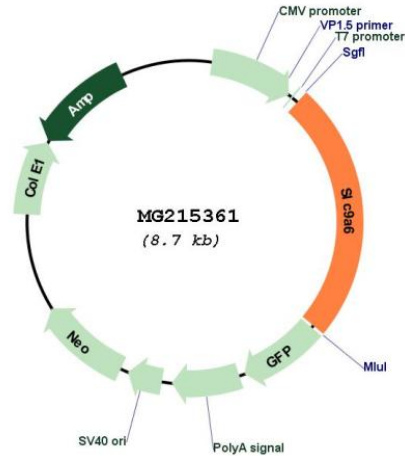
SgfI-MluI

Cloning Scheme:

Cloning sites used for ORF Shutting:



Plasmid Map:



ACCN: NM_172780

ORF Size: 2106 bp

OTI Disclaimer: The molecular sequence of this clone aligns with the gene accession number as a point of reference only. However, individual transcript sequences of the same gene can differ through naturally occurring variations (e.g. polymorphisms), each with its own valid existence. This clone is substantially in agreement with the reference, but a complete review of all prevailing variants is recommended prior to use. [More info](#)

OTI Annotation: This clone was engineered to express the complete ORF with an expression tag. Expression varies depending on the nature of the gene.

Components: The ORF clone is ion-exchange column purified and shipped in a 2D barcoded Matrix tube containing 10ug of transfection-ready, dried plasmid DNA (reconstitute with 100 ul of water).

Reconstitution Method:

1. Centrifuge at 5,000xg for 5min.
2. Carefully open the tube and add 100ul of sterile water to dissolve the DNA.
3. Close the tube and incubate for 10 minutes at room temperature.
4. Briefly vortex the tube and then do a quick spin (less than 5000xg) to concentrate the liquid at the bottom.
5. Store the suspended plasmid at -20°C. The DNA is stable for at least one year from date of shipping when stored at -20°C.

RefSeq: [NM_172780.4](#)

RefSeq Size: 4920 bp

RefSeq ORF: 2109 bp

Locus ID: 236794
Cytogenetics: X A5- A6