

Product datasheet for **MG215351**

Smtn (NM_001159284) Mouse Tagged ORF Clone

Product data:

Product Type:	Expression Plasmids
Tag:	TurboGFP
Symbol:	Smtn
Synonyms:	smsmo
Mammalian Cell Selection:	Neomycin
Vector:	pCMV6-AC-GFP (PS100010)
E. coli Selection:	Ampicillin (100 ug/mL)



ORF Nucleotide Sequence: >MG215351 representing NM_001159284
Red=Cloning site Blue=ORF Green=Tags(s)

TTTTGTAATACGACTCACTATAGGGCGCCGGGAATTCGTGCGACTGGATCCGGTACCGAGGAGATCTGCC
GCCGCGATCGCC

ATGGCAGACGAGGCTTTAGCTGGGCTGGATGAAGGAGCCCTCCGAAAACGCTGGAGGTCCTGCAGATC
TGGCAGAACGGCGCGGATCCGCTCAGCCATCCGGGAGCTGCAGCGACAGGAGCTGGAACGAGAAGAGGA
GGCTCTGGCGTCCAACGTTTCCGTGCTGAGCGCAAGACAACAAGGAGAAGTGGTACACTCTCAACAG
CGAGAAGCTGAACAGCAGGCGCCCTCGCACGATTGGCAGGGAGACTGGAGTCCATGAATGATGTCGAGG
AGTTGACCACACTGCTTCGGAGTCCCGTGAATATGAGGAGCGCAAGCTGATCAGAGCTGCCATCCGCCG
AGTGGCAGCTCAGGAGATTAAGGCTGCCACCTTGGCTGGGAGACTGTGCAGTAGACTTCCAGTAGTGGC
CCCCGAGAGGACAGCAGGAGGAGGAGCAGCACACATTGGACCCTGGTAAGGTGCCAGAACCAGAGCAGC
AGGAACAGCAGACAGAAGTACTCGAGCCAACCCCAACCCAGAGGACACCAGCCAGGATGTGACCACAGT
GACACTCTGCTGAGGGCCCCGCTGGGGCAGGCCAGCTCACTGCTTCCCCACAATTACCCACC
AGTGCCTCTCCAGAGCCTCTGCTGGAGCCTGCTGGAGCCAGTGTCTGCTGTGGAGGCTCCAGTCAGCT
CTGAGCCACTTCCACACCTTCAGAAGCTCCTAGCCCTGAGCCCCCATGTGCGCGGTACCGTCCAGCTC
TCGGGGGGGGTCAATCAGCAAGCCCTGCTGGCCCCACAGAGCCCTCAGATACCTTGGACTCCATCAGA
GGCTTCTCCAACACTAAGAGAGCAGACCCGCTGAAACGAAATCCTGCCAACGTTCACTATCTGTGCTCA
GTCCCCGACAACCAACCCCAAATCGAGAGCCAACCTCACTTGCAGGACCGTCCAGTTCGGTCGAGTTGG
CTCTGTGAGAGACAGAGTCCAAAAGTTCACATCTGATTCTCCCGTGGTTGCCAGGCTCCAGGATGGCCCA
CCCCGAACAGCCCTTGCTTACCGACCCCCACAAGGCTCCCGGGCCCTTCCCTCATCAGCACCCCTG
CCTCCTCTCCAGCAACTCCTCCTCCGAGTCCAGTGACACTTCTCCACAAGAAGCAGAGAGAAGT
TGCTCATTCCCTGGCCGAGTTCAGAGCTGCCCTCAAGAGGAGGGCCCTGGGGGGCGGGGCTTGGCTCTC
AGGTCCCTTGAACACAGAGCAGGGGGGCCAAGCCCTGCTCAGAAGAGCCAGTACCCACCAGCCCGTGG
CCGTTGGCACTGGGGGGCCAGGGGGCAGTATGAAGACTACGTTTACCATTGAGATCAAGGATGGCCGTGG
TCAGGCCTCCACAGGCCGGTGTCTGCTGCCACAGGCAACCAGAGAGCAGAATTGACTTTGGGATTGCGG
GCACCCCAACCCCTTCTCAGCACAGCAGTGGGGCAAGAACAACCATCACCCACATCAGCAACCCCTGGGA
CTGTGACCCGACTGGGCAGTGTCACTCACGTCACCTTACGCCATGCCTCCCTGGTAACCGAGGAGG
CTGCAACTTAAAGATGGAGCCAGATCTGCAGAGCCCCCTCCACCACAGTGAAGCAGCTAATGGCGCA
GAGCAGGCTCGAGTGGACAAAAGGCCAGAGGGGGGAGTCCCCTGAGTGCAGAGGAGCTGACGGCCATTG
AGGACGAAGGAGTCTTGACAAAGATGCTGGACCAGACTACGAATTTGAGGAGAGGAAGCTCATCCGGGC
TGCACTGCGTGAGCTCCGACAAAAGAAAGAGAGACCAGAGGGACAAGGAACGAGAACCAGGAGCTACGGGAG
GCACGGGCCCGCCGGGCGAGAGCCGAAGCAATGTGGCCACGGAGACCACCACAGGCACAGCCAGCGGG
CGGCTGATGGCTCTACTGTGGCAGCTTACCAAAACCGAGCGCTCGTTCACTCCAATGATGGCACTCA
GACGGCCCGCACCAACACAGTGGAGTCCAGTTTTCATGAGGCGCTTGGAGAATGGCAGCAGCAGCAGCAGC
ACCACCACCACCGGTCCAAAACCAAGAGTTTTTCTCTTCTCTTCTCTCGTCTCGTCCAAAAAGATGG
GCAGTATCTTCGACCGAGAGGACCAGACCAGTCACTGCTGGCAGCCTGGCAGCCCTTGAAGACGCCA
GGCAGAGAAGAAGAAGAGTTAGTGAAGGCACAGAGTCTGCCAAAGACTTCCAGATCCCAAGCACGCAAG
GCCATGATTGAGAAGCTAGAGAAAAGAGGCTCTGCAGGTGGTCTGGCACACCCCGTACAGCTGTACAGC
GTTCTACCAGCTTCGGAGTCCCAACGCCAATAGCATCAAGCAGATGTTGCTGGACTGGTGGCGAGCCAA
GACCCGCGGCTACGAGCACGTGGACATCCAGAACTTCTCTCCAGCTGGAGTATGGGATGGCTTCTGT
GCCCTGGTGCACAATTTCTCCCTGAGGCTTTTGACTATGGGCAGCTGAGCCCAAAAACCGAGCCAGA
ACTTTGAAATGGCCTTCTCCTCCGCTGAGACCCATGCGGACTGCCGAGCTCCTGGATACAGAGGACAT
GGTGGCGCTTCGAGAGCCAGACTGGAAGTGCCTGTACACGTACATCCAAGAGTCTACCGCTGTCTGGTC
CAGAGGGGCTGGTAAAAACAAAAAGTCC

ACGCGTACGCGGCCGCTCGAG - GFP Tag - GTTTAA

Protein Sequence:

>MG215351 representing NM_001159284

Red=Cloning site Green=Tags(s)

MADEALAGLDEGALRKLEVTADLAERRRIRSAIRELQRQELEREEALASKRFRAERQDNKENWLHSQQ
 REAEQQAALARLAGRLESMNDVEELTLLRSAGEYEERKLIIRAAIRRVRAQEIKAAATLAGRLCSRLPSSG
 PREDSSRQAHTLDPGKVPPEPEQQEQTEVLEPTPTPEDTSQDVTVTLLLRAPPGGRPSSPASPHNSPT
 SASPEPLLEPAGAQCQAVEAPVSSEPLPHPSEAPSPPEPPMPVPSSSRGRVISKPLPGTEPSTLDSIR
 GFSNTKRADPSETKSCQRSLSVLSPRQPTPNREPTSLAGPSQFRRVGSVDRVQKFTSDSPVVARLQDGP
 PRTALASPTPTRLPGPSLISSTTPASSSSNSSSPSPSDTSSHKKQRELAHSLAELQSCPQEEGPGGRGLAL
 RSLLENRAGGPKPCSEEPSTPPPVAVGTGGPGGSMKTTFTIEIKDGRGQASTGRVLLPTGNQRAELTLGLR
 APPTLLSTSSGGKNTITHISNPGTVTRLGSVTHVTTFSHASPNGRGGCNFKMEPDPAEPPSTTVEANGA
 EQARVDKGPEGRSPLSAEELTAIEDEGLVDKMLDQTTNFEERKLIIRAALRELQRKRDRQDKERERRLRE
 ARARPGESRSNVATETTRHSQRAADGSTVGTVKTERLVHSNDGTQARTTTVESSFMRRLENGSSSSS
 TTTTTVQTKSFSSSSSSSSKMGSIFDREDQTSRPGSLAALERRQAEKKELVKAQSLPKTSASQARK
 AMIEKLEKEGSAGGPGTPRTAVQRSTSFVGNANSIKQMLLDWCRAKTRGYEHVDIQNFSSSWSDGMAFC
 ALVHNFFPEAFDYQLSPQNRNQNFEMAFSSAETHADCPQLLDTEDMVRLREPDKWCYVYTIQEFYRCLV
 QKGLVKTKKS

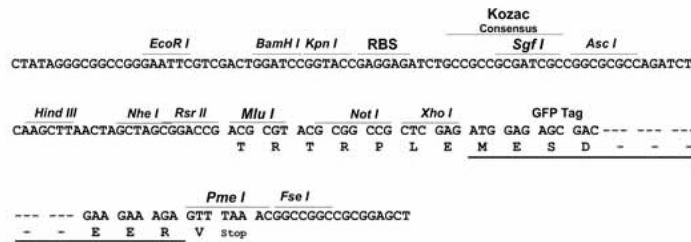
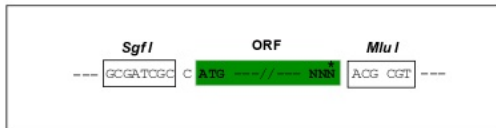
TRTRPLE - GFP Tag - V

Restriction Sites:

SgfI-MluI

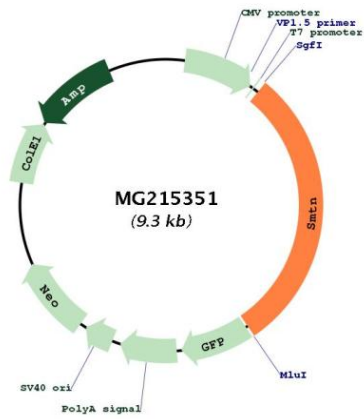
Cloning Scheme:

Cloning sites used for ORF Shuttling:



ACCN:	NM_001159284
ORF Size:	2760 bp
OTI Disclaimer:	The molecular sequence of this clone aligns with the gene accession number as a point of reference only. However, individual transcript sequences of the same gene can differ through naturally occurring variations (e.g. polymorphisms), each with its own valid existence. This clone is substantially in agreement with the reference, but a complete review of all prevailing variants is recommended prior to use. More info
OTI Annotation:	This clone was engineered to express the complete ORF with an expression tag. Expression varies depending on the nature of the gene.
Components:	The ORF clone is ion-exchange column purified and shipped in a 2D barcoded Matrix tube containing 10ug of transfection-ready, dried plasmid DNA (reconstitute with 100 ul of water).
Reconstitution Method:	<ol style="list-style-type: none">1. Centrifuge at 5,000xg for 5min.2. Carefully open the tube and add 100ul of sterile water to dissolve the DNA.3. Close the tube and incubate for 10 minutes at room temperature.4. Briefly vortex the tube and then do a quick spin (less than 5000xg) to concentrate the liquid at the bottom.5. Store the suspended plasmid at -20°C. The DNA is stable for at least one year from date of shipping when stored at -20°C.
Note:	Plasmids are not sterile. For experiments where strict sterility is required, filtration with 0.22um filter is required.
RefSeq:	NM_001159284.1 , NP_001152756.1
RefSeq Size:	3397 bp
RefSeq ORF:	2766 bp
Locus ID:	29856
UniProt ID:	Q92IU8
Cytogenetics:	11 A1
Gene Summary:	Structural protein of the cytoskeleton.[UniProtKB/Swiss-Prot Function]

Product images:



Circular map for MG215351