

## Product datasheet for **MG215350**

### Rapgef6 (NM\_175258) Mouse Tagged ORF Clone

#### Product data:

<b>Product Type:</b>	Expression Plasmids
<b>Tag:</b>	TurboGFP
<b>Symbol:</b>	Rapgef6
<b>Synonyms:</b>	A530068K01; A1844632; BB085664; C030018K18Rik; mKIAA4052; PDZ-GEF2; Pdzgef2; RA-GEF-2
<b>Mammalian Cell Selection:</b>	Neomycin
<b>Vector:</b>	pCMV6-AC-GFP (PS100010)
<b>E. coli Selection:</b>	Ampicillin (100 ug/mL)

**ORF Nucleotide Sequence:** >MG215350 representing NM\_175258  
Red=Cloning site Blue=ORF Green=Tags(s)

TTTTGTAATACGACTCACTATAGGGCGCCGGGAATTCGTCGACTGGATCCGGTACCGAGGAGATCTGCC  
GCCGCGATCGCC

ATGAACTCGCCCGTGGACCCCGCGCTCGGCAGGCACTGAGGAAGAAGCCGCCGAGCGGACTCCTGAGG  
ACTTAAATATTATTTATCTTATCTGCATGGGATGAAATACTATCAAACCTCAGGGAGCATCAGCTTAG  
GTTAATGTCTACAAGAGCAGCTATGAGAGATACAGTGGCAATCAAATGCTTTTTGTTTCAGAACTATT  
GCCAGATGTTGGTATATCCTGCTTCTGGATCTGTACTTGTAAAAGATTCTATGGTCCTTCTCCTTGCA  
GTTTTGGTAAGCAGTTTTGGAGGAAAAAGAGGATGTGATTGTCTTGTGTTAGAACCCTCAGAAATGATTGT  
GGTAGAGAATTCCAAAGATAATGAAGACAGTATTTTACAAAGAGAAATCCTGCCAGACAGTCTCGACGA  
AGGTTTCGGAATAACTATAAAGGAGAACGCCAAACATAATAGATGGAGTGGATATTAATACTACC  
TTTCGCTTCCAGCTGATCTTACCAAGATGCACCTCACAGACAACCTCATCCACAGGTGACGCATGTGTC  
TTCTAGTCAGTCTGGCTGTAGCATTGCCAGTGACTCTGGGAGCAGCAGTTTATCCGATATCTATCAGGCT  
ACAGAGAGTGAAGTAGGAGATGTAGATTTAACACGCCTTCCAGAAGGACCTGTTGATTCTGAGGATGAAG  
AGGAGGAGGAAGAAGAGATTGATAGAACAGATCCACTCGAGGTCGAGATCTTGTTCGGGAGTGTCTTGA  
AAAGGAACCCGACAGACAAAACCTGATGATGATGTTGAACAGTACTTGAGTTCATGCACCAGCTGCCTGCC  
TTTGCGAACATGACCATGTCTGTAAGGAGAGAACTCTGCTCCGTCATGGTTTTTGAAGTAGTAGAGCAGG  
CTGGGCTGTTATTTCTTGAAGATGGCAAGAGCTTGACTCATGGTATGTCATTTTAAATGGCACTGTAGA  
AATTAGTCATCCAGATGGGAAAATAGAAAATCTTTCATGGAAAATAGTTTTGGGATTGCCCCACGCTG  
GATAAGCAGCACATGCATGGAGCTGTCAGGACCAAGTCGATGATTGTCAGTTTGTCTGCATAGCTCAAC  
AAGACTATTGGAGAATTTTAAATCATGTGGAAAAAAATACTCACAAGTTGAGGAAGAGGGAGAGATTGT  
CATGGTACATGAGCACCGTGAGCTAGACCGGAGCGGAACCAGGAAAAGGACACATTGTAATCAAGGCAACA  
CCTGAGCGTCTCATGATGATTTGATAGAAGAACATTCTATTGTTGGACCAACATACATAGAAGATTTCC  
TCTTAACTACAGGACATTTCTTGAACCTCTTGGATGTTGGGATCAAGCTTTTGGAAATGGTTTAAAGAT  
TGACAACCTAAGGATAAAGGTGACACGGATTGACTCTTATGGGTAATAATCATTTTAAATGATTTTGA  
GGTATCCTGCTATGACTCAATTTCTAGAAGAATTTGAAAGAAATTTGGAAGATACAAAATGAATGGTC



ACCTCAGGTTATTGAATATTGCCTGTGCTGCAAAGGCTAAGTGGAGGCAAGTTGTACTGCAGAAGGCGTC  
CCGTGAGTCCCCGCTGCACTTCTGCCTTACTGGGGCAGTGAGAAGGGATTTGGAGTCTTTGTTGAAGAA  
GTAGAATCTGGTAGCAAAGCTGCTGACGCAGGACTGAAAAGGGGTGATCAGGTAAATGGAAGTCAATGGAC  
AAAACCTTTGAGAATATTACACTTGCTAAAGCCCTTGAATTTTGAGAAAATAACTCATCTTGCACCTTAC  
TGTGAAGACCAACATTTTTGTGTTCAAAGAATTGCTCAGTAGGACTGAACAAGAGAAATCTGGTGTCTCT  
CATATTTCCAAAATTTGCTGAAAAAAAAGTAATCGCCATTCAATCAAGATGTCCAGGGGATATGGAGC  
AGGCACCACAGGAGAAAAGAAAATAAGAAAATTAAGCAAATACCGTTTCAGGTGGAAGAAAACAAAATCAG  
GAAAATTTTGGATAAAACACGATTTAGTATCTTGCCTCCAAAACATTTTAGTGACGGAGGCCTGAGTCAA  
TCACAAGATGACAGCATTGTGGGAACCAGGCAGTGTAGGCACAGCCTGGCTATAATGCCAATTTCCCGGAA  
CACTTTTCATCCAGCAGCCAGATCTCTTACAGCCTACCACTAGCATGTTGGACTTTTCCAATCCTTCAGA  
TATTCTGTCAAGTTATAAGAGTTTTCAAAGCAGATCAACAAAGTTGCTACATTATCATCAGTAAGGAT  
ACCACAGCTAAAGAAGTGGTCTGCCAAGCTGTACAGGAATTCGGTTTGACTGGTGCATCTGACACATACT  
CCCTCTGTGAAGTGTCTGTTACTCCTGAGGGTGTATAAAGCAGAGAAGACTTCCGGACCAGTTCTCCAA  
ATTAGCTGATAGAATCAACTCAATGGAAGGATTACCTAAAAACAACATGGAACAGAAACATTGTGT  
TCTGATGAAGATGCTCAGGAAGTCTTAAAGAAAGCCAGCTCTCCATGCTGCAGCTCAGTACCATCGAGG  
TCGCCACCCAGCTCTCCATGAGAGACTTTGATTTATTTTCGTAACATTGAGCCTACTGAATACATTGATGA  
TCTTTTTAAATTAGATTCCAAAACAGGAAATACTCACTTGAACAATTTGAGGATATTGTAACCAAGAG  
ACATTTCTGGGTTGCCTCAGAGATTTAAGTGAGTCAATCAGCTGAAAAGAATGAAGATTATTAACATT  
TTATCAAAATTTGCTCTTATTGCCGAGAATGCAAGAATTTCAATTCATGTTGCAATAATAAGTGGCTT  
GAACCTGGCACCCGGTAGCAGCACTCAGAGGCAGTGGGAAAAGTTGCCAAGCAATATGAGAAAACATCTT  
CAAGATCTACAAGACCTTTTTGATCCATCTAGAAATATGGCAAAATACAGAAAATATTCTTAGTAGTCAAA  
GCATGCAGCCTCCAATTATCCACTCTTCCCTGTTGTCAAGAAAGATATGACATTTCTCCATGAAGGAAA  
TGACTCCAAAGTAGATGGCTTAGTAACTTCGAGAAGCTAAGAATGATTGCCAAGGAAATCCGTCATATT  
ATTCGAATGACTTCTGCCAACATGGACCCTGCCATGATGTTCCGACAGAGGTCATTGAGTCAAGGCAGCA  
CAAATTTCTAACATGCTAGATGTCCAGGGAGGTGCTCACAAAAAAGAGCAGCCGCAGCTCACTGCTGAA  
TGCCAAGAACTGTATGAAGATGCCAAAATGGCAAGGAAAGTGAACAGATATCTTTCTAGTCTGGACATA  
GACACAGATGAGGAGAAGTCCAGATGATGCTACTGCAGTGGGAACCTGCATATGGTACCTTGACAAAAGA  
ACTTAACTGAAAAAAGGTGAGCCAAATCATCTGAGATGTCTCTGTACCATGAGGTGAGTGGCCAAAC  
AGCTAAAGTCCACTTGATCAGCCACACAGAGTGAAGCAGGTGCTTCAAGTGGCCAGCAGTAACTTGCAC  
CCCATCCGGAAGAAAGGACAAGCCAAAGACCATGTGCTGAGTACAAGTTTACCTCAGAAAGGTTTAGGAC  
CAACTGAGGAAGTGAAGTAAAGAAACACACAGAAGACTATTTCTGTAGCGTCTCTCTGCACCTAG  
CCCTCCTGCATCTCCTCAGAACTCCCCACGCAAAAGTTATACACTCACACCATCAAGTAAATGTGACAAC  
TTGTCTGACTCCAGCCACAGTGAATCTCCTCTCGGTCCAGCATTGTGAGCAATGGTTCTGTTGACTCCA  
TGTCTGCAGCTGGCAGGATGAACGCTGTTCTCCACAGTCTGGCAGTTCTGAGCCACAGGGGCATT  
GGAAAAGACAGATCACCTTCCGGGATCTCAGACCACAGTCACTTGTCTCAGGGTGGATGCTGTCAAAG  
CCGTGTCTTATCAAGGGTGTAGCTGTCTCATCTTCTCTGAGCAGCGAAGAGATGTCTCATGAGCATGTTG  
TGCTGGAAGCAGCTGACAGTGGGCGGGCAGTTGGACTTCTGTTCCAGCAGCTCCCATGACAACTTCCA  
AAGCCTTCAAAATCAAAAAGCTGGGACTTCTGAATCTTACAGACACATGCATTTAGATGACCCTATT  
GCAGAAGTTGAGCCCACTGACTGTGAGCCCTGTGCCTGTCTAAAGGCTGCTCAAGAACTTGTGGCCAGT  
GCAAAGGCAGCCTAGAGACGAACCAGCTGAGGCAGAGTTGGGCCTCCTCCAGCTCACTCTCGGACACATG  
TGAACCAAACTACGGGACAGTTAAGCGGAGGGTGTGGAAAGTGCACCAGCAGAGGCACCTGATGGCTTG  
GAGCCAGGGATACCACTGACCCTGTTTATAAACTGTCACTTCCAGTACAGACAAGGGCTTGTATTGTGT  
AATTTCTTTAGCGGACCTAAAGGAAGGACCCACCCGACCTAAAACCTCCAGACTATAGTGTGGCAGTA  
CAGAGATCAAAGATGATGCTTAAACAGCCTGTCTAGACTGCCGCCAGCTCTCCAGTAGCCACACCTCGG  
CCTGGGTTCCCTCGAAGATTGGATCCAGCCTCAAAGGCATAGCCATCCCAAGCTAGCAGATGTGGCTGA  
TGCAGATAGCGAAGCAGATGAAAACAGCAGGTGTCAGCAGTC

ACGCGTACGCGGCCGCTCGAG - GFP Tag - GTTTAA

**Protein Sequence:**

>MG215350 representing NM\_175258

Red=Cloning site Green=Tags(s)

MNSPVDPGARQALRKKPPERTPEDLNIIYSYLHGMEILSNLREHQLRLMSTRARYERYSGNQMLFCSETI  
 ARCWYILLSGSVLVKDSMVLPPCSFGKQFGGKRGCDCLVLEPSEMIVVENSKNEDSILQREIPARQSRR  
 RFRKINYKGERQTIIDGVDINNYLSLPADLTKMHLTDNPHQVTHVSSSQSGCSIASDSGSSSLSDIYQA  
 TESEVGDVDLTRLPEGPVDESEEEEEEEIDRTDPLQGRDLVRECLEKEPADKTDDEVEQLLEFMHQLPA  
 FANMTMSVRRELCSVMVFEVVEQAGAVILEDGQELDSWYVILNGTVEISHPDGKIENLFMGNSFGIVPTL  
 DKQHMHGAVRTKVDCCQFVCIQQDYWRILNHVEKNTHKVEEEGEIVMVEHRELDKTRGTRKGVHIVIKAT  
 PERLIMHLIEEHSIVDPTYIEDFLLTYRTFLETPLDVGIKLLEWFKIDNLRDKVTRIVLLWVNNHFNDFE  
 GDPAMTQFLEEFERNLEDTKMNGHLRLLNIACAkakWRQVVLQKASRESPLHFCLTGGSEKGFVGFVEE  
 VESGSKAADAGLKRGDQVMEVNGQNFENITLAKALEILRNNTLALTVKTNIFVFKELLSRTEQKESGVP  
 HIPKIAEKKSNRHSIQDVPGDMEQAPQEKGNKKIKANTVSGGRNKIRKILDKTRFSILPPKLFSDGGLSQ  
 SQDDSVIGTRHCRHSLAIMPVPTLSSSSPDLLQPTTSMDFSNPDIQVIRVFKADQQSCYIIISKD  
 TTAKEVVCQAVQEFGLTGASDTYSLCEVSVTPEGVIKQRRLPDQF SKLADRIQLNGRYLLKNMETETLC  
 SDEDAQELLKESQLSMLQLSTIEVATQLSMRDFDLFRNIEPEYIDDLFKLDSKTGNTHLKFQFEDIVNQE  
 TFWVASEILSESQKRMKIIKHFIKIALHCRECKNFNSMFAIISGLNLAPVARLGTWEKLPSPKYEKHL  
 QDLQDLFDP SRNMAKYRNILSSSQMQPPIIPLFPVVKKDMTFLHEGNSDKVDGLVNFELRMIKAEIRHI  
 IRMTSANMDPAMMFRQSLSQGSTNSNMLDVQGGAHKRRARRSLLNAKKLYEDAQMARKVKQYLSLDI  
 DTDEEKFMMSLQWEPAYGTLTKNLTEKRSAKSEMSPVPLRSVGQTAKVHLHQP HRVSQVLQVPAVNLH  
 PIRKKGQAKDHVLSLTPQKGLGPTTEEVSVKKHTEDTISVASSLHSSPPASPQNSPRKGYLTPSSKCDN  
 LSDSSHSEISSRSSIVSNGSVDSMSAAGQDERCSSHSLAVPEPTGALEKTDHPGSGISDHSQLAHGWMLSK  
 PCLIKGVAVSSLSSEEMSHHVLEAADSGRGSWTS CSSSSHDNFQSLQNQKSWDFLNSYRHMHLDDPI  
 AEVEPTDCEPCACPKGCSRTCGQCKGSLETNQLRQSWASSSLSDTCEPNYGTVKRRVLESAPAEAPDGL  
 EPRDTPVYKTVTSSTDKGLIVYCVTSPKKGDYREPPPTPPGYLGISLADLKEGPHPLKPPDYSAV  
 QRSKMMLNSL SRLPPAPSSHTSAWVPSKIGSQPQRHSHPLADVADADSEADENEQVSAV

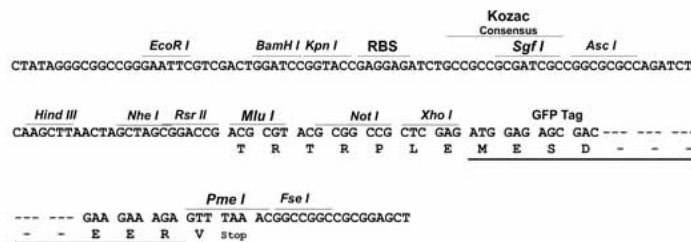
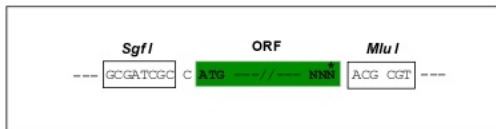
TRTRPLE - GFP Tag - V

**Restriction Sites:**

SgfI-MluI

**Cloning Scheme:**

Cloning sites used for ORF Shutting:



**ACCN:**

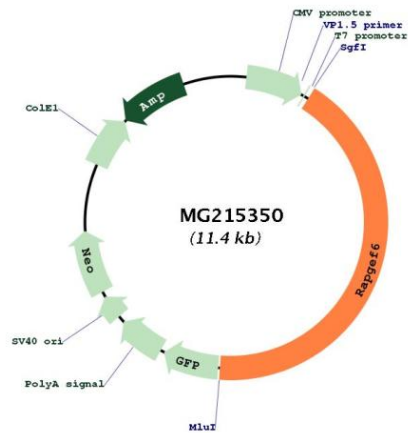
NM\_175258

**ORF Size:**

4803 bp

<b>OTI Disclaimer:</b>	The molecular sequence of this clone aligns with the gene accession number as a point of reference only. However, individual transcript sequences of the same gene can differ through naturally occurring variations (e.g. polymorphisms), each with its own valid existence. This clone is substantially in agreement with the reference, but a complete review of all prevailing variants is recommended prior to use. <a href="#">More info</a>
<b>OTI Annotation:</b>	This clone was engineered to express the complete ORF with an expression tag. Expression varies depending on the nature of the gene.
<b>Components:</b>	The ORF clone is ion-exchange column purified and shipped in a 2D barcoded Matrix tube containing 10ug of transfection-ready, dried plasmid DNA (reconstitute with 100 ul of water).
<b>Reconstitution Method:</b>	<ol style="list-style-type: none"><li>1. Centrifuge at 5,000xg for 5min.</li><li>2. Carefully open the tube and add 100ul of sterile water to dissolve the DNA.</li><li>3. Close the tube and incubate for 10 minutes at room temperature.</li><li>4. Briefly vortex the tube and then do a quick spin (less than 5000xg) to concentrate the liquid at the bottom.</li><li>5. Store the suspended plasmid at -20°C. The DNA is stable for at least one year from date of shipping when stored at -20°C.</li></ol>
<b>Note:</b>	Plasmids are not sterile. For experiments where strict sterility is required, filtration with 0.22um filter is required.
<b>RefSeq:</b>	<a href="#">NM_175258.4</a> , <a href="#">NP_780467.2</a>
<b>RefSeq Size:</b>	8212 bp
<b>RefSeq ORF:</b>	4806 bp
<b>Locus ID:</b>	192786
<b>Cytogenetics:</b>	11 B1.3

Product images:



Circular map for MG215350