

Product datasheet for **MG215343**

Ank3 (NM_170690) Mouse Tagged ORF Clone

Product data:

Product Type:	Expression Plasmids
Product Name:	Ank3 (NM_170690) Mouse Tagged ORF Clone
Tag:	TurboGFP
Symbol:	Ank3
Synonyms:	2900054D09Rik; AI314020; An; Ank; Ank-3; AnkG; Anky; Ankyrin-3; Ankyrin-G
Mammalian Cell Selection:	Neomycin
Vector:	pCMV6-AC-GFP (PS100010)
E. coli Selection:	Ampicillin (100 ug/mL)
ORF Nucleotide Sequence:	>MG215343 representing NM_170690 Red=Cloning site Blue=ORF Green=Tags(s)

TTTTGTAATACGACTCACTATAGGGCGGCCGGAATTCGTCGACTGGATCCGGTACCGAGGAGATCTGCC
GCC**CGATCGCC**

ATGAGTGAAGAGCCAAAGGAGAAGCCCGCCAAGCCTGCTCATAGGAAGAGGAAAGGAAAAAGTCTGATG
CCAACGCAAGTTACTTAAGAGCAGCTCGGGCAGGGCACCTGGAAAAGGCCCTTGACTACATCAAAAATGG
AGTGGACGTCAACATCTGTAACCAAGATGGATTGAATGCACTCCATCTTGCTTCAAAGAAGGCCATGTG
GAAGTGGTCTCTGAGCTGCTGCAGAGGGAAGCCAATGTTGATGCCGCCACAAAGAAAGGAAACACGGCCT
TACACATCGCATCTTTGGCTGGCAAGCGGAAGTGGTCAAGGTCTTGTTACGAACGGAGCGAATGTCAA
CGCACAATCTCAGAAATGGCTTACACCATTGTATATGGCAGCCCAGGAGAACCACCTGGAAGTCGTCAAG
TTTCTTCTGGACAATGGCGCCAGCCAAAGCCTGGCCACAGAGGACGGCTTACGCCATTGGCCGTGGCTC
TGCAACAAGGTCAATGACCAAGTCGTGTCCTCCTGCTCGAGAACGACACGAAGGGAAAAAGTGCAGCTCCC
AGCCCTCCACATCGCAGCCCGGAAAGACGACACCAAGGCAGCAGCTCTGCTCCTGCAGAAATGACACAAA
GCGGACGTGGAGTCAAAGAGTGGCTTACCCCGCTCCACATAGCTGCCACTATGGGAACATCAATGTGG
CCACGTTGCTGTTAAACCGAGCGGCTGCTGTGGACTTACCCGACGGAATGACATCACTCCCTTACACGT
TGCTCGAAGCGAGGAAATGCAAAATATGGTGAAGCTATTGCTGGACCGGGGTGCGAAGATCGATGCCAAG
ACCAGGGACGGTCTGACTCCGTTGCACTGTGGGGCGAGAAGTGGCCATGAGCAGGTGGTAGAGATGTTGC
TTGACAGATCCGCCCCATCCTTTCAAAAACCAAGAATGGATTGTCGCCACTGCACATGGCCACACAAGG
AGACCATTTAAACTGCGTCCAACCTCCTCCAGCACAACGTGCCCGTGGACGACGTCAACCAACGACTAC
CTGACTGCCCTCCATGTGGCTGCCACTGCGGCCATTACAAAAGTGC AAGGTTCTTTGGATAAGAAAAG
CTAGCCCCAATGCCAAAGCCCTGAATGGCTTACCCCTCTCCATATCGCCTGCAAAAAGAACCAGCATCCG
AGTAATGGAACCTCTTTGAAGCACGGTGCATCTATTCAAGCCGTAACCGAGTCGGGCCCTACCCCAATC
CATGTTGCTGCCTTCATGGGACATGTAATATCGTGTACAGCTAATGCATCATGGAGCCTCCCAAAACA
CCACCAATGTGAGAGGAGAGACGGCATTGCATATGGCGGCTCGGTCCGGACAAGCAGAAGTGGTGGGTA
TCTGGTCCAAGATGGGGCTCAGGTAGAAGCAAAAGCTAAGGATGACCAGACTCCACTCCACATCTCAGCC



[View online »](#)

CGACTTGGGAAAGCTGACATAGTGCAACAACCTGTTACAGCAAGGAGCATCCCCAATGCAGCAACAACCT
CTGGGTACACCCCTTCACCTTGC GGCCAGAGAGGGGCATGAGGATGTAGCTGCGTTCTCTGGATCA
TGGAGCATCTTTATCCATAACAACAAAGAAGGGATTACCCCTCTGCACGTGGCAGCCAAATACGGAAAG
CTTGAAGTCGCAAGTCTCCTGCTGCAGAAGAGTGCCTCTCCCGATGCCGAGGGAAGAGCGGGCTAACTC
CACTGCATGTAGCAGCGCATTACGATAATCAGAAAAGTGGCCCTTCTGCTCTTGGACCAGGGAGCCTCACC
CCACGCAGCCGCAAAAGTGGCTATACACCACTGCACATCGCGGCCAAGAAGAACCAGATGGACATAGCC
ACGTCCCTGCTGGAGTACGGTCTGATGCAACCGCGTTACCCGGCAAGGATTGCGTCCGTCCATCTTG
CGGCACAGGAAGGCACGTGGACATGGTGTCTGCTCCTGAGTAGAAAACGCGAATGTCAACCTGAGCAA
TAAGAGCGGTCTCACCCACTCCACCTGGCTGCTCAAGAAGACCGAGTGAATGTGGCCGAGGTCTTGTC
AACCAGGGGGCCCATGTGGATGCTCAGACAAAGATGGGCTACACCCCGCTCCATGTGGGCTGCTACTATG
GAAATATCAAAATAGTCAATTTCTGCTGCAGCATTCTGCAAAAGTTAATGCCAAGACGAAGAATGGATA
CACAGCACTGCACCAGGCTGCTCAGCAGGGCCACACGCATATCATCAATGTCTTGCTTCAAGAACGCC
TCCCCAATGAACCTACTGTGAATGGGAACACAGCTCTGGCCATCGCCCGCGCCTTGGTTACATCTCGG
TGGTTGACACACTGAAGTCTGACGGAGGAAATATGACCACCACTACCATCACGGAGAAGCACAAAAT
GAATGTCCGAAACGATGAATGAAGTCTCGATATGTCAGACGATGAAGGTGATAAATGCACATGGTTC
AAAATTCCCAAAGTACAGGAGGTTTTGGTGAAGTGAAGATGCCATCACAGGGGACACTGACAAGTATC
TCGGGCCACAGGACCTTAAGGAGCTAGGTGATGACTCCCTGCCAGCAGAAGGTTACGTAGGCTTCAGTCT
TGGAGCCCGTTCTGCCAGCTCCGCTCCTTCAAGTTCGGATAGGTCCTACACCTTGAACAGAAGCTCCTAC
GCAAGGGACAGCATGATGATAGAGGAACTTCTGGTACCATCCAAAGAGCAGCACCTGACGTTACAGAGGG
AGTTTGATTCTGACTCCCTCAGACACTACAGTTGGGCAGCGGACACGTTAGATAATGTGAACCTGGTCTC
AAGCCCGGTGCATTCTGGGTTTCTGGTTAGCTTATGGTGGACCGGAGAGGGGGCTCCATGCGAGGAAGC
CGCCACCACGGGATGCGGATCATCATCCCTCCGCGAAAGTGTACGGCCCCACCCGCATCAGTCCCGCC
TGGTAAAGAGACATAAACTGGCCAACCCACCCCATGTTGGAAGGAGAGGGATTAGCCATAGGCTGGT
AGAAATGGTCTGCGGGGACAAATTTTAGGCCCGTCAATTGTGAAATCCCTCATTTTGGGTCCATG
AGGGGGAAGGAGAGAACTTATCGTCTTCCGAGCGAGAACGGAGAGACCTGGAAGGAACATCAGTTTG
ACAGTAAAAACGAAGACCTCGCGGAGCTTCTCAATGGCATGGATGAAGAAGTTCGACAGCCCGAAGAGTT
GGGTACAAAGCGCATCTGCAGAATTATCACAAGGATTTCCCCAGTATTTTGGCGTGGTTTCCCGGATT
AAGCAGGAAAGCAACCAGATCGGTCTGAGGGTGGGATTCTGAGCAGCACCCGTGCCCTCGTCCAGG
CCTCCTTCCAGAGGGCGCCTTAACCAAGAGGATCCGTGTGGGTCTCCAGGCTCAGCCCGTCCAGAGGA
AACGGTAAAAAATCCTTGGGAACAAAGCAACATTTAGCCCAATGTCACGGTAGAGCCGAGGAGAAGG
AAGTTCCATAAGCCGATCACCATGACCATTCGGTGCCTCCCGCCCTCGGAGAGGCGTGTCCAATGGGT
ACAAGGGGATGCCACGCCAACCTGCGGCTCCTCTGCAGCATCACAGGAGGCACCTCACCAGCTCAATG
GGAAGACATCACAGGAACAACCCCTCTGACGTTTATAAAGGATTGTGTCTTTCACAACCAACGTTTCA
GCCAGATTCTGGCTGGCGGACTGCCATCAGGTGTTAGAGACCGTAGGGCTAGCCTCCCAGCTGTACAGAG
AGCTGATATGCGTTCCCTACATGGCCAAGTTCTGTTGTGTTTGC AAAACAAACGACCCGGTGGAGTCCCTC
GCTGAGGTGCTTCTGTATGACAGACGACAGGGTGGACAAAACCTGGAGCAGCAGGAGAAGTTCGAGGAG
GTTGCCAGAAGCAAAGACATTGAGGTTCTGGAAGGAAAGCCATCTACGTTGATTGCTATGGAACCTGG
CCCCTCTGACCAAAGGAGGACAGCAGCTTGTTTTAACTTTTATCTTTCAAAGAAAACAGACTGCCATT
TTCCATCAAGATCAGAGACACCAGTCAAGAGCCCTGTGGCCGCTGTCTTCTGAAGGAGCCAAAGACA
ACAAAGGGATTACCCCAAACAGCTGTTTGCAACTTAAATATTACTCTGCCGGCACATAAAAAGGCTGAGA
AGGCAGACAGACGCCAGAGCTTTGCCTCCCTAGCTTTACGTAAGCGCTACAGCTACTTGACTGAACCCAG
CATGAGTCCGACAGTCTTGTGAGCGGACGGATATCAGGATGGCGATAGTAGCCGATCACCTGGGACTT
AGTTGGACAGAGCTGGCAAGGAACTGAATTTTTCAAGTGGATGAAATCAACCAAATACGTGTGAAAAATC
CCAATTTTAAATTTCTCAGAGCTTCAATGTTATTAAGGAGTGGGTGACCAGAGACGAAAGAATGCCAC
AACTGATGCCTTAACTTCGGTCTTAACGAAGATTAACCGGATAGACATTGAACTCTGCTGGAAGGACCA
ATATTTGATTATGGGAATATTTAGGCACCAGAAGCTTTGCAGATGAAAACAATGTTTTCCATGACCCAG
TTGATGGTCAACCTTCTTTCAAGTGGAGCTGGAGACCCCATGGGGTGTACTGCACACCACCAACCC
TTTCCAGCAAGATGACCATTTTAGTGATATCTCTAGCATAGAGTCTCCCTTAGGACCCCAAGTACTG
AGTGACGGGTGGTGCCTTCCCAGGGAACATAGAGCATCCAACAGGTGGACCTCCAGTGGTAACCGCAG
AGGACACTTCTTTAGAAGACAGCAAAATGGACGATTCTGTAAGTGAACAGACCCGGCCGACCCACTGGA
CGTAGATGAGAGCCAGTTGAAGGACCTGTGTCAGAGCGAGTGTGCTCAGTGTGGCGAGTGTGCCCGG
ATCCAAACGACGGTCCGACGGCAGAGCCACTGAGACCGCAGACTAGAAAAGTAGGCATGAGCTCTGAAC

AGCAGGAAAAAGGAAAATCTGGTCCTGATGAGGAAGTGACAGAAGACAAGGTCAAATCTCTGTTTGGGA
 CATTCAACTTGAAGAAGTAGAGGCTGAGGAGATGACAGAAGACCAGGGGCAGGCTATGCTTAACCGTGT
 CAGCGAGCAGAAGTGGCAATGTCTTCACTTGCAGGTTGGCAGAACGAGACGCCAAGTGGAAAGCCTAGAGT
 CCCAGCGCAAGCTCGAAGACTAACTGGTGGGTACTGGACCGTCTGGATGACAGCTCTGACCAGGCTCG
 GGATTCTATTACCTCATACCTCACGGGAGAACCTGGGAAGATCGAAGCAAATGAAACCACACAGCGGAA
 GTCATTCCAGAAGCAAAGGCAAAACCTACTTCCCGGAATCCAAAACGATATAGGGAACACAGCATCA
 AGGAAACCTGAAACCAAAAACACACGGATGTGGTCGCACTGAGGAACCAAGTGTGCGCCCTCACAGCCTA
 CCAGAAATCTCTGGAAGAAACCAGCAAGCTTGTATAGAAGACGACCTAAACCCCTGTGTGCTGTCGGC
 ATGAAAAAGATGACCAGGACTACGGCTGACGGCAAAGCCAGGCTCAACCTCCAGGAAGAAGGGGTCCA
 CCAGGTGACAGCCTAAGCAGGGAGAAGGCTATAAGGTGAAGACGAAGAAGGAAATCCGGAACGTGGAGAA
 GAAAACCCAC

ACGCGTACGCGGCCGCTCGAG – GFP Tag – GTTTAA

Protein Sequence:

>MG215343 representing NM_170690

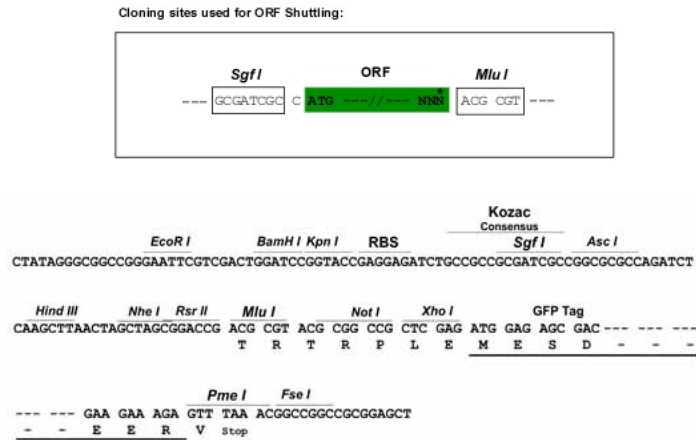
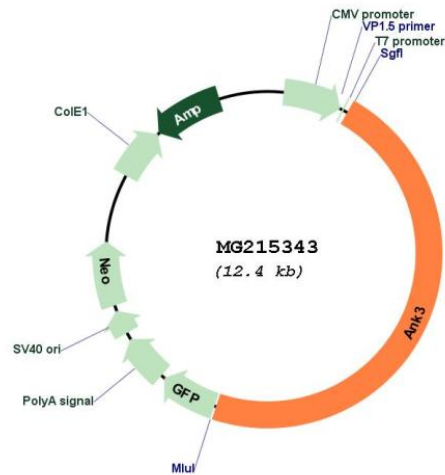
Red=Cloning site Green=Tags(s)

MSEEPKEKPAKPAHRKRKGGKSDANASYLRAARAGHLEKALDYIKNGVDVNICNQNLNALHLASKEGHV
 EVVSELLQREANVDAATKKGNTALHIASLAGQAEVVKVLVTNGANVNAQSQNGFTPLYMAAQENHLEVVR
 FLLDNGASQSLATEDGFTPLAVALQQGHDQVVSLLLENDTKGKVRPALHIAARKDDTKAAALLQNDTN
 ADVESKSGFTPLHIAAHYGNINVATLLLNRAAAVDFTARNDITPLHVASKRGNANMVKLLDRGAKIDAK
 TRDGLTPLHCGARSGHEQVVEMLLDRSAPILSKTKNGLSPLHMATQGDHLNCVQLLLQHNVVDDVTNDY
 LTALHVAACHGHYKVAKVLDDKASPNAKALNGFTPLHIAACKKNRIRVMELLLKHGASIQAVTESGLTPI
 HVAAFMGHVNIIVSQLMHHGASPNTTNRGETALHMAARSGQAEVVRYLVQDGAQVEAKAKDDQTPHLHISA
 RLKADIVQQLLQQGASPNAAATSGYTPLHLAAREGHEDVAAFLLDHGASLSITTKKGFPLHVAAYGK
 LEVASLLLQKSASPDAAAGKSGLTPLHVAHYDNQKVALLLDQGASPHAAAKNGYTPLHIAAKKNQMDIA
 TSLLEYGADANAVTRQGIASVHLAAQEGHVDMSVLLSRNANVNLNKSGLTPLHLAAQEDRVNVAEVLV
 NQGAHVDAQTKMGYTPLHVGCHYGNIKIVNLLQHSKVNAKTKNGYALHQAQQGHTHIINVLQNNNA
 SPNELTVNGNTALAIARRLGYISVVDTLKVVTEEIMTTTTITEKHKNVPETMNEVLDMSDDEGDKCTWF
 KIPKVIIEELLVPSKEQHLTFTREFDSDSLRHYSWAADTLDNVNLVSSPVHSGFLVSMVDARGGSMRGS
 RHHGMRIIIPPRCTAPTRITCRLVKRHLANPPMVEGEGLASRLVEMGPAGAQLGPVIVEIPHFGSM
 RGKERELIVLRSENGETWKEHQFDSKNEDLAELNMGDEELDSPEELGTRICRIITKDFPQYFAVVSRI
 KQESNQIGPEGGILSSTTVPLVQASFPÉGALTKRIRVGLQAQVPEETVKKILGNKATFSPITVTEPRRR
 KFHKPITMTIPVPPPSGEGVSNYKGDATPNLRLLCSITGGTSPAQWEDITGTTPLTFIKDCVSFTTNVS
 ARFWLADCHQVLETVGLASQLYRELICVPYMAKFVFAKTNDPVESSLRCFCMTDDRVDKLEQQENFEE
 VARSKDIEVLEGPPIYVDCYGNLAPLTKGGQQLVFNFYFKNRPLPFSIKIRDTSQEPGRLSFLKEPKT
 TKGLPQTAVCNLITLPAHKKAEKADRRQSFASLALRKRYSYLTPSMSQPSPCERTDIRMAIVADHLGL
 SWTELARELNFSVDEINQIRVENPNLSISQSFMLLKKWVTRDGKNATTDALTSVLTKINRIDIVTLLEGP
 IFDYGNISGTRSFADENNVFHPVDGHPVSFQVELETMPGLYCTPPNPFQDDHFSDISSIESPFRTPSRL
 SDGLVPSQGNIEHPTGGPPVTAEDTSLDSKMDSDVTVDPADPLDVDESQKDLQCSECAQCWASVPG
 IPNDGRQAEPLRPQTRKVGMSSEQQEKGKSGPDEEVTEDEKVKSLFEDIQLEEEVEAEEMTEDQQAMLNRV
 QRAELAMSSLAGWQNETPSGSLESPAQARRLTGGLLDRLDDSSDQARDSITSYLTGEPGKIEANGNHTAE
 VIPEAKAKPYFPESQNDIGKQSIKENLKPETHGGRTEEPVSPLTAYQKSLEETSCLVIEDAPKPCVPVVG
 MKKMTRTTADGKARLNLQEEEGSTRSEPKQEGYKVKTKKEIRNVEKKTTH

TRTRPLE – GFP Tag – V

Restriction Sites:

Sgfl-MluI

Cloning Scheme:

Plasmid Map:

ACCN:

NM_170690

ORF Size:

5820 bp

OTI Disclaimer:

The molecular sequence of this clone aligns with the gene accession number as a point of reference only. However, individual transcript sequences of the same gene can differ through naturally occurring variations (e.g. polymorphisms), each with its own valid existence. This clone is substantially in agreement with the reference, but a complete review of all prevailing variants is recommended prior to use. [More info](#)

OTI Annotation:	This clone was engineered to express the complete ORF with an expression tag. Expression varies depending on the nature of the gene.
Components:	The ORF clone is ion-exchange column purified and shipped in a 2D barcoded Matrix tube containing 10ug of transfection-ready, dried plasmid DNA (reconstitute with 100 ul of water).
Reconstitution Method:	<ol style="list-style-type: none">1. Centrifuge at 5,000xg for 5min.2. Carefully open the tube and add 100ul of sterile water to dissolve the DNA.3. Close the tube and incubate for 10 minutes at room temperature.4. Briefly vortex the tube and then do a quick spin (less than 5000xg) to concentrate the liquid at the bottom.5. Store the suspended plasmid at -20°C. The DNA is stable for at least one year from date of shipping when stored at -20°C.
RefSeq:	<u>NM_170690.2</u> , <u>NP_733791.2</u>
RefSeq Size:	9962 bp
RefSeq ORF:	5823 bp
Locus ID:	11735
UniProt ID:	<u>G5E8K5</u>
Cytogenetics:	10 36.1 cM
Gene Summary:	This gene encodes a member of the ankyrin protein family. Ankyrins link integral membrane proteins to the spectrin-based cytoskeleton. Ankyrin family members share a protein structure which includes three independently folded domains: the N-terminal ankyrin repeat domain, the central spectrin-binding domain, and the C-terminal rod domain. This ankyrin functions as the major ankyrin in the kidney and may play a role in the polarized distribution of many integral membrane proteins to specific subcellular sites. Alternative splicing of this gene results in multiple transcript variants encoding different isoforms. [provided by RefSeq, Jul 2008]