

## Product datasheet for **MG215335**

### Duox2 (NM\_177610) Mouse Tagged ORF Clone

#### Product data:

**Product Type:** Expression Plasmids  
**Product Name:** Duox2 (NM\_177610) Mouse Tagged ORF Clone  
**Tag:** TurboGFP  
**Symbol:** Duox2  
**Synonyms:** A430065P05Rik; LNOX2; NOXEF2; P138-TOX; THOX2  
**Mammalian Cell Selection:** Neomycin  
**Vector:** pCMV6-AC-GFP (PS100010)  
**E. coli Selection:** Ampicillin (100 ug/mL)  
**ORF Nucleotide Sequence:** >MG215335 representing NM\_177610  
 Red=Cloning site Blue=ORF Green=Tags(s)

TTTTGTAATACGACTCACTATAGGGCGGCCGGAATTCGTCGACTGGATCCGGTACCGAGGAGATCTGCC  
 GCC**CGATCGCC**

ATGCTTCCAACAAGTCCCAAGACTCTAGTTCTCCTGGGCGCTCTGCTGACTGGACCCCTGGGCCAGCAG  
 GTGGCCAGGACGCACCCTCACTGCCCTGGGAAGTGCAGCGCTACGACGGCTGGTTAATAATCTGAAGTA  
 CCACCAGCGCGGTGCGGCTGGCTCGCGGCTGCGTGCCTAATACCGGCTAATTATGCTGACGGTGTAT  
 CAGGCTCTGGAAGAGCCGCTACTGCCAACCCCTCGCCGGCTAAGCGATGCTGTCGCTAAGGGCAAAGCAG  
 GGCTGCCCTCGGTCCACAACCGCACAGTCTGGGGTCTTCTTTGGCTACCACGTCTCAGACCTGGT  
 GAGTGTGGAAACACCAGGCTGCCCGCAGAGTTCTCAACATTTACATCCACGTGGGGACCCGGTGTT  
 GACCCCTGACAAGCGCGGAACGTGGTGCTGCCCTTTCAAAGGAGCCGCTGGGACCAACACTGGACAGA  
 GCCCCAGCAACCCCGGGACCAGAGCAACCAGGTGACCGGCTGGCTAGATGGCAGCGCCATCTATGGCTC  
 CTCTCATTCTGGAGTGACACTCTGAGGAGCTTCTGAGGACAGCTGGCTTCTGGGCTGACCCCTGCT  
 TTCCCGCGGAACCTCCAGAGCTCTGCTCATGTGGATGGCGCCGGACCCCTCCACGGGGCGGGCGGGC  
 CACAAGGGGTGTATGCCTTTGGGGCCAGCGCGGAACAGGGAGCCCTTCTGCAGGCTCTGGGCTTGT  
 GTGGTTTCGCTACCACAACCTGTGTGCCAGGAAGCTGGCGCAGGAGCACCAGGACTGGGGGATGAGGAA  
 CTGTTCCAGCATGCTCGCAAGAGGTCATTGCCACCTACCAGAACATTGCTCTATACCAATGGCTGCCCA  
 GCTTCTGCAGAAAACCTCCAGAGTATTCAGGGTACCGCCCTTTCATGGACCCAGCATCTCCCGGA  
 GTTCGTGGTGGCCTCTGAGCAGTTCCTCTACTATGGTGCCCTGGGGTCTACATGAGAACTCCAGC  
 TGTCAATTCGGAAATCCCGAAGGAAGTTTCAGACAGCTCTCCAGCTCTCAGAGTCTGCAACAGCTACT  
 GGATTCGGGAGAACCCCAATCTGAAGACTGCTCAAGATGTGGATCAGTTGCTGCTGGGAATGGTTCCCA  
 GATCTCAGAGCTGGAGGACAGGATAGTATTGAAGACCTGAGAGATTACTGGCTGGCCAGAGAGATTC  
 TCTCGCACAGACTACGTGGCTAGCAGTATCCAGCGTGGCCGAGATATGGGGCTCCCAAGTATAGCCAGG  
 CTCTGCTGGCCTGGGACTGGAGCCTCCTAAGAACTGGAGTCTCAACCCCAAGTGAACCCAGG  
 GCTGGAGGCCACAGCTGCTGTACAACCAGGACCTGTCCAGTTGGAAGTACTCTGGGTGGACTCTG



[View online »](#)

GAGAGCCATGGGGACCCTGGACCTCTATTCAGCAACATCATTCTTGACCAGTTTGTGAGGCTCCGGGATG  
 GTGATCGCTACTGGTTTGAAGACTAGGAATGGGCTGTTCTCCAAGAGGAGATTGCAGAAATCAGAAA  
 CACCACCTTGCGGGATGTACTGGTAGCTGTCTCCAATGTGGACCCAGTGCCTTGAACCCAACTGTTTC  
 TTCTGGCAGGAAGGTGCACCCTGCCACAGCCTCGGCAACTCACAAACGGACGGCTTGCCCAAGTGTGCGC  
 CTGTTACTGTGATTGACTACTTTGAGGGCAGTGGTGTGGCTATGGTGTACAGCTGTAGCTGTCTGCTG  
 CTTTCCATTAGTGAGTCTGATTGCTGCTGGGGTGGTGGCTCATTCCGGAAACCGAGAACAAGATGCTA  
 CTTAAAGAAAGGCAAAGAGAGTCTGAAGAAACAACAGCCAGTGTGGGGTACCAGCAATGGAGTGGCCGG  
 GCCCAAGGAGAAGAGCTATCCAGTCACTCTCCAGTTGCTTCCAGACAGAAGTCTGCAGGTCTTGACAA  
 ACGGTTCACTGTGCTCCGGACCATCCAAGTGCAGTCCCCACAGCAGGTTAACCTCATCTGTCCAGCAAC  
 AGTGGACGTGCGACCCTGCTGCTCAAGATCCCCAAGGAGTATGACCTGGTGTGATGTTAACTCTGAAG  
 AGGACCGGGTGCCTTCGTGCGGCTGTTGCAAGACCTCTGTATCTGCTGCACTCCCGGCCTCCACATAGC  
 TGAGGTGGATGAGAAGGAGCTATTGAGAAAGGCTGTGACCAAGCAGCAACGGGCAGGCATCTTGAGATC  
 TTCTTCAGACAGCTTTTTGCTCAGGTGCTGGACATCAACCAGGCTGATGCAGGGACTCTGCCCTGGACT  
 CATCCCAGCAAGTGCCTGAGGCTCTGACCTGTGAGCTGAGCAGAGCTGAGTTTGTGACTCCCTAGGCT  
 CAAGCCCCAGGACATGTTTGTGGAGTCCATGTTTTCTCTGGCTGACAAGGATGGCAATGGCTACATATCC  
 TTCCGGGAGTTTCCCTGGACATCCTGGTGGTCTTCATGAAAGGCTCCTCAGAGGATAAGTCCCCTGATGT  
 TTACCATGTATGACCTGGATGGGAATGGCTTCTCTCCAAGGACGAGTCTTCCACATGATGCGGTCTT  
 CATTGAGATCTCCAACAAGTGCCTGTCCAAGGCCAGCTGGCTGAGGTGGTTGAGTCTATGTTCCGGGAG  
 TCTGGGTTCCAGGACAAGGAGGAGCTGACCTGGGAGGACTTCCACTTCATGCTGCGGGACCACGACAGTG  
 ATCTCCGATTCACACAGCTCTGTGTCAAAGGTGGAGCTGGAGGCACCAAGGACATCTTTAAACAAAGCAG  
 TGCTGTGCGAGTCTGTTTCAACCGGACTCCTGGGAACAGGGTAATGGGGCCCTCTCCCGGCTGTAC  
 ACGGAGGCACTGCAGGAGAAAAACAGAGTGGCTTCTGGCCAGAAGTCAAGCAGTACAAGCGATTTG  
 TGGAAAACTACCGGCGCCACATTTGTGTGTTACAATCTTCTCAGCCATGTCATAGCCCTGTTTGCAGA  
 CCGTGCCTACTACTATGGCTTTGCTCACCACCCACGGACATCGAAGAAACCACTATGTGGGCATCATC  
 CTGTCCCGGGGACGCGGCCAGCATCTCCTTCATGTTCTCCTACATCCTGCTCACCATGTGCCGAACC  
 TCATCACCTTCTTGCAGGAGACCTTCTCAACCCTACATCCCCTTTGATGCCGCTGTGGACTTCCATCG  
 CTGGATTGCTATGGCTGCAGTTGCTAGCTGTTCTGCACAGTGTGGACATGCAGTCAATGTGTACATT  
 TTCTCAGTCAGTCCCCTCAGCCTGATGGCTGCGTCTTCCCTAACGTCTTTGTAATGACGGGTCCAAGT  
 TTCCCCAAAGTACTACTGGTGGTTCTTTGAGACAGTCCAGGTATGACAGGAGTCTCCTGCTCCTGGT  
 CCTGGCCATCATGTACGTCTTCGCCTCCCACCACTTCCGCGCCACAGTTTCCGGGGCTTCTGGCTGACC  
 CACCACCTCTATGTTGTGCTTTATGCTCCTGATCATCATCCATGGCAGCTATGCCCTCATCCAATTACCCA  
 GCTTCCACATCTACTTCCCTGGTCCCAGCAATTATCTATGGAGGGGACAAGCTAGTGAGCCTGAGCCGGAA  
 GAAGGTGGAGATCAGTGTGGTGAAGGCGGAGCTGCTGCCTCAGGGGTGACCTACTTGCAGTTCAGAGA  
 CCCAAGACATTTGAGTACAAATCAGGGCAGTGGGTGCGAATCGCGTGCCTGGATCTGGGTACCAATGAGT  
 ATCACCCTTTCACGCTGACCTCTGCACCCCATGAGGACACACTCAGCCTGCACATCAGGGCTGTGGGACC  
 TTGGACTACTCGCTCAGAGAGATCTACTACCCCCAGTGGGTGGCACCTGTGCCAGATACCCAAAGCTG  
 TACCTCGATGGACATTTGGAGAGGGCCATCAGGAGTGGCATAAGTTTGGAGTGTGAGTGTGGTAGGAG  
 GGGGCAATGGAGTCAACCCCTTTGCCTCCATCCTCAAAGACCTGGTCTTCAAATCGTCCATGGGCAGCCA  
 GATGCTCTGTAAGAAGATCTACTTCATCTGGGTGACAAGGACTCAGAGGCAGTTTGAAGTGGCTGGCTGAC  
 ATCATCCGGGAGGTGGAGGAGAATGACTGCCAGGACCTGGTGTCTGTGCACATCTACATTACTCAGCTGG  
 CTGAGAAGTTCGACCTCAGGACCACCATGCTGTACATCTGTGAGAGGCACTTCCAGAAGGCGCTGAACAG  
 GAGTTTGTTCACGGGCTGCGTTCCATCACCCTTTGGTTCGCCCTCCCTTTGAGCTCTTCTTCAACTCT  
 CTACAGGAAGTCCATCCACAGGTACGTAAGATTGGAGTCTTACAGCTGTGGTCTCCAGGGATGACCAAGA  
 ATGTGGAGAAGGCTGCCAGCTCATCAACAGGCAGGACCGGGCCACTTTGTGCATCATTATGAGAACTT  
 C

ACGCGTACGCGGCCGCTCGAG – GFP Tag – GTTTAA

Protein Sequence: >MG215335 representing NM\_177610  
 Red=Cloning site Green=Tags(s)

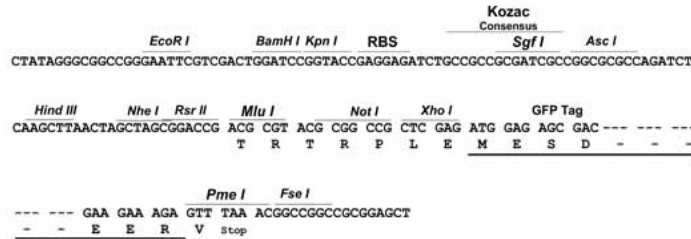
MLPTSPKTLVLLGALLTGPLGPAGGQDAPSLPWEVQRYDGFNFKYHQGAAGSRLRRLIPANYADGVY  
 QALEEPLLPNPRRLSDAVAKGKAGLPSVHNRTVLGVFFGYHVLSDLVSVETPGCPAEFLNIYIPRGDPVF  
 DPDKRGNVVLPFQSRWDHNTGQSPSNPRDQSNQVTGWLDGSAIYGSSHSWSDTLRSFSGGQLASGPDPA  
 FPRNSQSLLMWMAPDPSTGRGGPQGVYAFGAQRGNREPFLQALGLLWFRYHNLCAKLAQEHPHWGDEE  
 LFQHARKRVIATYQNIALYQWLPFSLQKTPPEYSGYRPFMDPSISPEFVVASEQFLSTMVPPGVYMRNSS  
 CHFRRKFKPEGSDSSPALRVCNSYWIRENPNLKTAQDQDQLLLGMAEQISELEDRIVIEDLRDYWGPREF  
 SRTDYVASSIQRGRDMGLPSYSQALLALGLEPPKNWSALNPQVEPQVLEATAALYNQDLSQLELLGLL  
 ESHGDPGPLFSNIILDQFVRLRDGDYWFENTRNLFSKEEIAEIRNTTLRDVLAASNVDPSALQPNVF  
 FWQEGAPCPQPRQLTTDGLPQCAPVTVIDYFEGSGAGYGVTLVAVCCFPLVSLIVAGVVAHFRNREHKML  
 LKKGKESLKKQPASDGVPAWEWPGPEKSYPTLQLLPDRSLQVLDKRFVLRITQLQSPQQVNLILSSN  
 SGRRTLLKIPKEYDLVLMFNSEEDRGAFVRLQDLICCTPGLHIAEVDEKELLRKAVTKQQRAGILEI  
 FFRQLFAQVLDINQADAGTLPLDSSQVREALTCELSRAEFADSLGLKPQDMFVESMFLADKDGNGYIS  
 FREFLDILVVFMKGSSEDKSRLMFTMYDLDGNGFLSKDEFFTMMRSFIEISNNCLSKAQLAEVVESMFRE  
 SGFQDKEELTWEDFHMLRDHSDLRFTQLCVKGGAGGTDIFKQSSACRVSFINRTPGNRMVMPSPRLY  
 TEALQEKKQSGFLAQKFKYKRFVENYRRHIVCVTIFSAICIGLFADRYYYGFASPTDIEETTYVGGII  
 LSRGTAASISFMFSYILLTMCRNLIITFLRETFLNRYIPFDAAVDFHRWIAMAAVLAVLHSGHAVNVYI  
 FSVSPLSLMACVFPNVFVNDGSKFPPKYWWFFETVPGMTGVLLLLVLAIMYVFAHHFRHSFRGFWLT  
 HHLVYVLYVLIHGSYALIQLPFHIYFLVPAIYGGDKLVSLSRKKVEISVVKAEELPSGVTYLQFQR  
 PKTFEYKSGQWVRIACLDLGTNEYHPFTLTSAPHEDTLSLHIRAVGPWTRRLREIYSPVGGTCARYPKL  
 YLDGPFEGHQEWHKFEVSVLVGGIGVTPPFASILKDLVFKSSMGSQMLCKKIYFIWVTRTQRQFEWLD  
 IIREVEENDCQDLVSVHIYITQLAEKFDLRTTMLYICERHFQKALNRSFLTGLRSITHFGRPPFELFNNS  
 LQEVHPQVRKIGVFCGPPGMTKNVEKACQLINRQDRAHFVHHYENF

TRTRPLE - GFP Tag - V

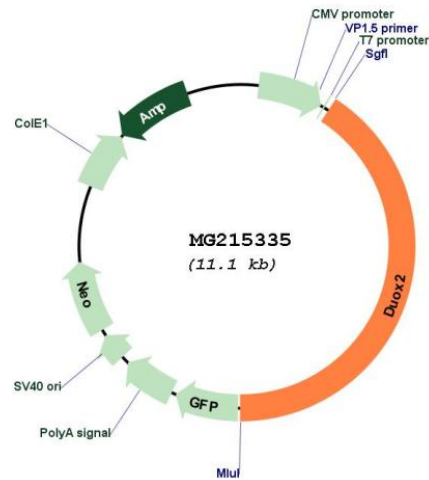
Restriction Sites: SgfI-MluI

Cloning Scheme:

Cloning sites used for ORF Shutting:



Plasmid Map:



ACCN: NM\_177610

ORF Size: 4551 bp

**OTI Disclaimer:** Due to the inherent nature of this plasmid, standard methods to replicate additional amounts of DNA in E. coli are highly likely to result in mutations and/or rearrangements. Therefore, OriGene does not guarantee the capability to replicate this plasmid DNA. Additional amounts of DNA can be purchased from OriGene with batch-specific, full-sequence verification at a reduced cost. Please contact our customer care team at [custsupport@origene.com](mailto:custsupport@origene.com) or by calling 301.340.3188 option 3 for pricing and delivery.

The molecular sequence of this clone aligns with the gene accession number as a point of reference only. However, individual transcript sequences of the same gene can differ through naturally occurring variations (e.g. polymorphisms), each with its own valid existence. This clone is substantially in agreement with the reference, but a complete review of all prevailing variants is recommended prior to use. [More info](#)

**OTI Annotation:** This clone was engineered to express the complete ORF with an expression tag. Expression varies depending on the nature of the gene.

<b>Components:</b>	The ORF clone is ion-exchange column purified and shipped in a 2D barcoded Matrix tube containing 10ug of transfection-ready, dried plasmid DNA (reconstitute with 100 ul of water).
<b>Reconstitution Method:</b>	<ol style="list-style-type: none"><li>1. Centrifuge at 5,000xg for 5min.</li><li>2. Carefully open the tube and add 100ul of sterile water to dissolve the DNA.</li><li>3. Close the tube and incubate for 10 minutes at room temperature.</li><li>4. Briefly vortex the tube and then do a quick spin (less than 5000xg) to concentrate the liquid at the bottom.</li><li>5. Store the suspended plasmid at -20°C. The DNA is stable for at least one year from date of shipping when stored at -20°C.</li></ol>
<b>RefSeq:</b>	<u><a href="#">NM_177610.2</a></u> , <u><a href="#">NP_808278.2</a></u>
<b>RefSeq Size:</b>	4554 bp
<b>RefSeq ORF:</b>	4554 bp
<b>Locus ID:</b>	214593
<b>Cytogenetics:</b>	2 E5