

Product datasheet for **MG215325**

lqgap3 (NM_001033484) Mouse Tagged ORF Clone

Product data:

Product Type: Expression Plasmids
Product Name: lqgap3 (NM_001033484) Mouse Tagged ORF Clone
Tag: TurboGFP
Symbol: lqgap3
Synonyms: A1593484; D030034H08
Mammalian Cell Selection: Neomycin
Vector: pCMV6-AC-GFP (PS100010)
E. coli Selection: Ampicillin (100 ug/mL)
ORF Nucleotide Sequence: >MG215325 representing NM_001033484
Red=Cloning site Blue=ORF Green=Tags(s)

TTTTGTAATACGACTCACTATAGGGCGGCCGGAATTCGTCGACTGGATCCGGTACCGAGGAGATCTGCC
 GCCCGATCGCC

ATGGAGCCGTGCGCGCAGGCCGAGCTCGGACAGCCTATGAGCGCCTCACAGCTGAGGAAATGGATGAGC
 AGAGGCGACAGAATGTCGCCTATCAGTACCTCTGCCGGCTGGAGGAAGCCAAGCGTTGGATGGAGGTGTG
 CTTGAAGGAGGAGCTTCCCTCCCTGTGGAGCTGGAGGAGAGCCTCCGGAATGGAGTGCTACTGGCCAAG
 CTGGGCCACTGTTTTGCACCCTCTGTGGTCCCCCTGAAGAAGATCTACGACGTGGAGCAGCTACGCTACC
 AGGCGACTGGCTTGCATTTCCGGCACACGGACAACATCAACTTTTGGCTCTCTGCGGTAGCCACATCGG
 TCTGCCTTCGATCTTCTCCAGAGACCACAGACATCTATGACAAAAAGAACATGCCTCGGGTGATCTAC
 TGCAATCACGCTCTCAGTCTTCTTCCGGCTGGGATTGGCTCCACAGATCCATGACCTGTATGGGA
 AAGTGAATTCACAGCTGAGGAACCTCGGCAACATCGCCTCTGAACTGGCCAAATATGGCCTCCAGTTACC
 GGCCTTCAGCAAGATCGGGGCATCCTGGCCAATGAGTTTTAGCCGATGAGGCTGCAGTCCATGCAGCT
 ATTCTGGCCATCAATGATGCCGTGGAGCGAGGGTGGTAGAGGACTCTGGTACCTTGCAGAATCCCA
 ATGCTCTCCTGGGAATCTTCGAGAACCCTGGCAGCTGTCTACCAAGAGCTGTGGCCCTAGCCAAGAT
 GGAGAAGGCGCCAATGCCAGGAATCATGACGATGGTCCAGGAGCAGGACATCTATGAATCCTGCCTCACC
 CAGGCAGAGATCCAGGGCCACATCAACCTCGCCAACGTCCAGGGGCACTGGAAGTTGTTGACGACGCTC
 TGGAGAGGCAGAACCCTGGGGCCTTGCTTGAGGCCCTTACGATCCTGTCTGGCCCTACAAGGGGTGAG
 AGGAACCTTTGCTGACTGGTACCTGGAACAGCTGACTTCAGACCGAGAGCAGAAATCACAGGAGCTGGGC
 CTGGTGAGACTTCTAGAAAAGGAGGAGATCCAGGCTGGTGTGGCTGTAGCCAATGAGAAGGGGGATGAAG
 AGCAAATATGCTCCAGGCTGTGTGGAGGATCAACAAAGCCATCCGGAGGGGAGTGGCTGCTGACACCGT
 GAAGGAGCTCATGTGCCCTGAAGCCAGCTGCCCGAGTCTACCCCTTTGCTCTGCTTTTTACCAGCAA
 GAGCTGGCTCTCCTCCAGAAGCAGCAACAGGGGAGCTGGCCAGGAGGAGCTCTTTGTGGCTGTGGAGA
 TGCTGTCAGCCGTGGTTCTGATTAACCGTCTCTGGAAGCTGGAGATGTCTGTGCCCTTTGGACAATCT
 AGTGAATCCCGCAACTGGCTAGCCAGGTAGAAGAAGAAAATGCCAACGTTACTTTGATGCCCTGGT



[View online >](#)

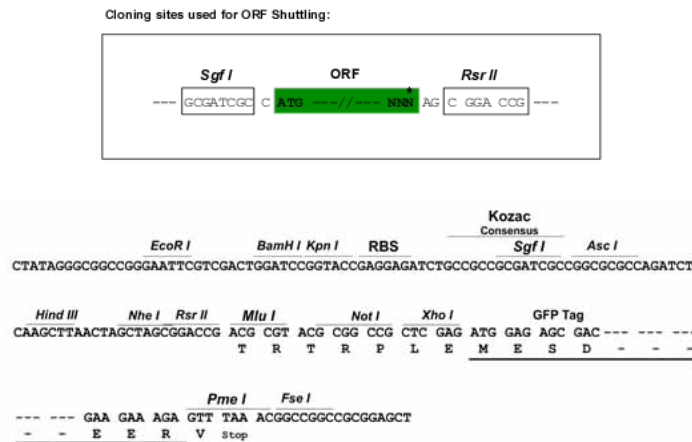
Protein Sequence: >MG215325 representing NM_001033484
 Red=Cloning site Green=Tags(s)

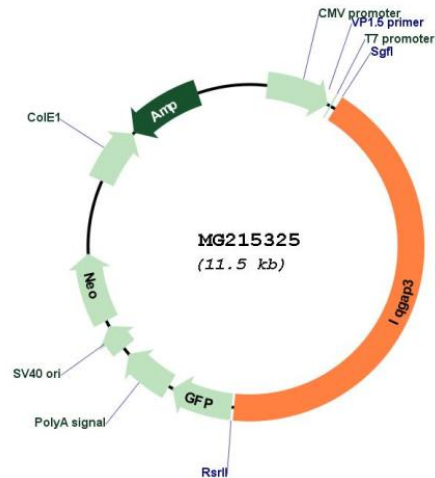
```
MEPCAAGRARTAYERLTA EEMDEQRRQNVAYQYL CRLEEAKRWMEVCLKEELPSPVELEESLRNGVLLAK
LGHCFA P SVVPLKKIYDVEQLRYQATGLHFRHTDNINFWLSAVA H IGLPSIFLPETTDIYDKKNMPRVIIY
CIHALSLFLFRLGLAPQIHDLYGKVKFTA EELGNIA SELAKYGLQLPAFSKIGGILANEFSADEAAVHAA
ILAINDAVERGVVEDTLVTLQNP NALLGNLREPLAAVYQELLALAKMEKAANARNHDDGQE QDIYESCLT
QAEIQGHINLANVQGALEVVDDALERQNP GALLEALHDPVLALQGV RGT FADWYLEQLTSDREQS QELG
LVRLLEKEEIQAGVAVANEKGDEEQTMLQAVWRINKAIRRGVAADTVKELMCPEAQLPRVYVFA SAFYQQ
ELALLQKQQQ GELGQEELFVA VEMLSAVVLINRALEAGDVCAFWDNLVN PATGLAQVEEENAQR YFDALV
KVQQFQGT HRGILSWNDLQA AVS QVNEQVQEETDQVLAISLINEALDQGCPEKTL SALLLPAAGLEDVSL
HVAPRYHLLLVA AKRQKARVTGDPGAVLWEEIRQGVARANEDTSTAQR IALGVAAINQAIKEGKAAQTE
RVL RNP NVALRGI VPDCAKSYQQALEGAAAKQCPGDTAFVWQHDMKDGTA YYLHLQTFQGTWEHPSGCH
LNTSHL TWEEIQSVITK VTAADRQLLWKANVGFVIK LQARLRGLV RQKFAESSHV FRTLLPAVIKIQA
HWRG YRQRKAYQERLQHFKANLDAI IKIQAWARMWAARRRYLRRLRYFQKNVDSVVKIQAFFRARKARDD
YRMLV HARHPPLCVVRKFAHLLNQSQEDFSAESELLKLQEEVVRKIRSNQLEQDLNLM DIKIGLLVKNR
ITLQEVVSHCKKLT KKNKEQLSDMMILDKQKGLKSLSREKRQKLEAYQHLYFLLQTQPIYLAKLIFQMPQ
NKTTKFM EGVIFSLYNYASNRREAYLLLQLFR TALQEEIKSKVEQPQDVVTGNPTVVRLVVRFYRNGRGQ
SALQEILGKVIQDVL EDRSVSIHTDPVHIYKSWINQEEAQTGQRSHLPYDVTPEQALSHSEVQRRLDISL
RSLLTLTEKFFVAISSVDHIPYGMRYMAKVLKTTLEKKFPNATERDIYKVVGNLLYYRFLNPAVVPDA
FDIVAMAAGSTLAAPQRHALGAVAQLLQHAAAGQIFSGESRHLRVLNDYLEDLHLKFRKFCRACRVPEP
EERFAIDEYS DMVAVAKPMVYITV GELIGTHRLLLEHQDQLAPGHQDPLHQLEDLGEPPTISDLIGDNI
ATDGHVDLSRLEVSLTLTNKFEGL ETDADHNSNQSLLLSTKQMLADLIQFHPGESLEEILTSSAPREHEE
AHRRLM CWRQACDTQKPEPLRRHSLMAHSLLSLSEKQQRVLRNLRRLRQLGLV RASDCYQGLVDELAKD
ICNQRRHRQRKAEMLR LRTTLQGLDAKTI FYEEQGDYNNQYIQACL DHLAPKPKSSGK GKQPSLHYTA
AQLLEKGV LVEIEDLPVSHFRNVIFDITPGDEAGRFFVNAKFLGV DMEKFLHYQDLLQLQYEGVAMK L
FNKAKVNVNLLIFLLNKKFLRK
```

SGP TRTRRLE - GFP Tag - V

Restriction Sites: SgfI-RsrII

Cloning Scheme:



Plasmid Map:


ACCN: NM_001033484

ORF Size: 4896 bp

OTI Disclaimer: The molecular sequence of this clone aligns with the gene accession number as a point of reference only. However, individual transcript sequences of the same gene can differ through naturally occurring variations (e.g. polymorphisms), each with its own valid existence. This clone is substantially in agreement with the reference, but a complete review of all prevailing variants is recommended prior to use. [More info](#)

OTI Annotation: This clone was engineered to express the complete ORF with an expression tag. Expression varies depending on the nature of the gene.

Components: The ORF clone is ion-exchange column purified and shipped in a 2D barcoded Matrix tube containing 10ug of transfection-ready, dried plasmid DNA (reconstitute with 100 ul of water).

Reconstitution Method:

1. Centrifuge at 5,000xg for 5min.
2. Carefully open the tube and add 100ul of sterile water to dissolve the DNA.
3. Close the tube and incubate for 10 minutes at room temperature.
4. Briefly vortex the tube and then do a quick spin (less than 5000xg) to concentrate the liquid at the bottom.
5. Store the suspended plasmid at -20°C. The DNA is stable for at least one year from date of shipping when stored at -20°C.

RefSeq: [NM_001033484.1](#), [NP_001028656.1](#)

RefSeq Size: 5676 bp

RefSeq ORF: 4899 bp

Locus ID: 404710

Cytogenetics: 3 38.78 cM