

## Product datasheet for **MG215315**

### Zfp217 (NM\_001159683) Mouse Tagged ORF Clone

#### Product data:

|                                  |   |
|----------------------------------|---|
| <b>Product Type:</b>             | Expression Plasmids                           |
| <b>Tag:</b>                      | TurboGFP                                      |
| <b>Symbol:</b>                   | Zfp217  |
| <b>Synonyms:</b>                 | 4933431C08Rik; AW987152; Gm562; ZABC1; Znf217 |
| <b>Mammalian Cell Selection:</b> | Neomycin                                      |
| <b>Vector:</b>                   | pCMV6-AC-GFP (PS100010)                       |
| <b>E. coli Selection:</b>        | Ampicillin (100 ug/mL)                        |



ORF Nucleotide Sequence: >MG215315 representing NM\_001159683  
Red=Cloning site Blue=ORF Green=Tags(s)

TTTTGTAATACGACTACTATAGGGCGCCGGGAATTCGTGCGACTGGATCCGGTACCGAGGAGATCTGCC  
GCCGCGATCGCC

ATGCCGACCCAGTCCCTCCTCGTGTACATGGACGGCCCGGAAGTCCTCAGCAGCTCTCTAGGCTCCCAGA  
TGGAGGTGGATGATGCTGTGCCATAAAAAGGGCCGGTGGCAGTCCCCTTCGAGCTGCTCAGGAGAAGAG  
CATGGCCGTGGCAGAGGGCCACATGCCCTGGATTGCATGTTCTGCAGCCAGGTCTTCTCTCAGGCGGAG  
GATCTCAGTCAGCACGTGCTGCTGCAGCACGGCCACCTCTGCGAGCCAGCTGTCTCGCTGTGGAGG  
CCGAGTACCTAAGTCCCCTTGATAAAGCTCTGGAGCCAACAGAGCCAGCATTGGAGAAGAGTGGCGAAGA  
CCCCGAGGAGTTGAGCTGTGATGTGTGGGCAGACATTCCAGTGGCTTTTGATGTTGAGAGCCACATG  
AAGAAGCATAAGGACTCCTTCACGTATGGGTGCAGCATGTGCGGGAGGAGATTCAAGGAGCCGTGGTTCC  
TGAAGAACCACATGCGGACACACAATGGCAAGTCTGGCACCAGGAGCAAGCTTCAGCAAGGCATGGAGAG  
TCCAGTCACCATCAATGAAGTGGTCCAGCCGCACGCCCTGGGAGCATCTCCACGCCCTACAAGATCTGC  
ATGGTCTGCGGCTTCTCTTCCAAAATAAGCAGAGCCTCATTGAGCACAGCAAGGTTACGCCAAAAGAAA  
CTGTCCCCAGTGCCAGCAACGTTGCCCTGATGACCACCGAGAGGAACCCACGTCGCCGAGGGAAGAGTT  
GCTGCAAGTTTTGAACTTGAGACCCAGATCAACTGCAGGTAGTACAGTGAAGCCATGACCTGCATACCT  
CAGCTTGACCCGTTACCACCTACCAGGCATGGCAGTTGGCTACCAAGGAAAAGTGGCCGTTGCCCAGG  
AAGAGGTGAAAGAGTCAGGCCAAGAAGGAAGCACAGACAATGACGACTCATGCTCAGAGAAAAGAGGAAC  
AGGGGAAAATATGGGTTGGGGTAAGGCGGAAGGGTCTGAAAAGTCCAAAACAAGTAAAAGCAGTTGTCCA  
GGTCTCTCCAAGACAAAAGAGAAGCCTAGACATGCTAATAGTGAAGTGCCTTCTGGGGATAGTGACCCCA  
AGTTGTCCAGTAGCAAGGAGAAGCCACGCACTGTTCTGAGTGCAGCAAGCCTTCAGGACATACCACCA  
GCTCGTCTGCACTCGAGGGTGCACAGGAAGGACAGGAGGACTGATGCCCTGTCAACCACCATGGCTGTG  
GATGCAAGGACGCTGGGACCTGCTCCCCAGACCTCAGCACCACCTCTGGAAGACAGTGGGGCCGGGGACC  
GAGAAGGGGCTCTGAAGACGGGTCTGAGGATGGACTCCCTGACGGGCTCCATTTGGATAAAAATGATGA  
TGGAGGAAAAGCGAAGCCCTCCGTCCTCGAGAGAGTGTAGTACTGTGGCAAGTTTTCCGTTCAAAC  
TATTACCTCAATATTCATCTCAGAACGCATACAGGTGAAAAACCATACAATGTGAATTCTGTGAGTATG  
CCGACGCCCAGAAGACATCTCTGAGGTACCACTTGAGAGACATCACAAGACAAGCAGCCGGTGGATGC  
TGCCGCTGAGTCCAAAAGTGAAGGCCGGAGCCAGGAGCCGAGGATGCGCTACTAACGGCTGCTGACAGT  
GCGCAGACCAAAAATTTAAGAGATTTCTTGATGGTGC AAAAGATGTTAAGGGAAGCCACCTGCCAAGC  
AGCTTAAGGAGATGCCTTCTGTCTTCAGAGTGTCTCTCACCAGCACACAGCAACGATACTCAGGATTT  
CCATAAACATGCAGCTGATAGTGTGAGAAAAGCGAGGAAGAGCCCTGCCCTACTTATCTGGACATGCAG  
AGAAAAGAAAGCAGGGGAGCCTCAGGCCAGCAGCCCTGTCTGCAGACTAGAGGGGTTGGGTCTTAGCAC  
GGGAAGCTGGCCATAGGGAGAAGATGGATCAGGATGCTGACTACAGACATAAGCCCGGTGCTGACTGCCA  
GGACAGGCCTTTGAATCTATCCCTTGGGCCGCTCCACGCTGTCTGCAATCTCTTTGAGCAAGTGTCTG  
ATCCCCAGCATTGCTGCCCTTTTGTACTTTCAAGACCTTTTATCCGGAAGTCCTTATGATGCACCAGA  
GACTTGAGCACAGGTACAACCTGACCCGCACAAGAAGGCAGCAGCAAGTCTGTGCTGAGGAACAGGCG  
TACCGGTTGCCCTCCGCTTTGCTGGGAAAAGATGCCCTCCCTTGTCTGGCTGCACAAGCCCAAGGCC  
AAGACTGCCTTCTCACCACACTCGAAGTCCCTGCACTCAGAGAAGGCTCGGCAGGGGGCCTCGGGGCCAA  
GCAAAGCACCCAGACTTCAGGACCAGACAACAGCACTTTAGCCCCAAGTAACTGAAGTACACAGGTC  
ACAACCCAAATGCTGGGGCACCAGTGCCACCAGGCAGCAGCAGTCAAGTGTGTTCCCAAAGGTGGCGTC  
CCTGCTGCTATGGATAAGGTGAAGAGACCTGAGCCAAAAGTGAAGTCCCTACCAGCTCCCGCTCAGT  
CCCCCTCAGCAGTAATAATAGCAACGGTTCTGTTGAGTATCCCGTGAAGGTTGACGGCCCATGGGCACA  
GCAAGGGAGAGACTACTACTGCCATCGGAATTCTGGCAGTGCCGCAGCAGAGTACAGTGAGCCACATCCC  
AAAAGACTCAAGTCCAGTGGGTGTCCCTGGACACAGAGCATGCAGGGACCAATGGCAGAAGGGGCTTTG  
AGCTCCCCAAGTACCATGTGGTCAGGAGCATCACCTCCTTGTACCACCAGAGTGTGTGCGCCACCAGCC  
TGTGCTGCCCCACAAGCCGTTTCTGAGCCCTGGGGAGGTGGAGTACCCAGTGTGTTGGCTGTGCAG  
AAGCCCTACAGTGCTCTGGACCCCTGTATACCTGTGGACCCGTGGGACACGCAGGAGGCAGCCAGCCC  
TTGAAGGAAAAGAGGCTGTGTACATCAGCACCTATCTAACAGCATGCTGCAGAAGAGAAGTATGAGAA  
TTTTATTGAAAATACACATTACCGACCAATGACAAAAACCT

ACGCGTACGCGGCCGCTCGAG - GFP Tag - GTTTAA

**Protein Sequence:** >MG215315 representing NM\_001159683  
 Red=Cloning site Green=Tags(s)

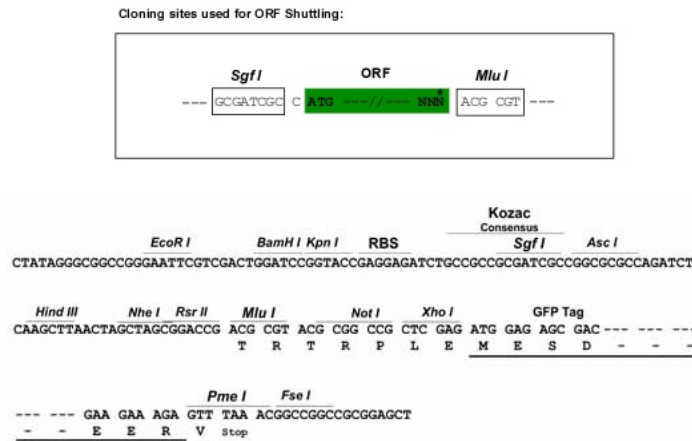
MPTQSLLVYMDGPEVLSSSLGSQMEVDDAVPIKGPVAVPFRAAQEKSMVAEAGHMP LDCMFCSQVFSQAE  
 DLSQHVLLQHRPTLCEPAVLRVEAEYLSPLDKALEPTEPALEKSGEDPEELSCDVCGQTFPVAFDVESHM  
 KKHKDSFTYGCSCMGRRFKEPWF LKNHMRTHNGKSGTRSKLQQGMESPVTINEVVQPHAPGSI STPYKIC  
 MVCGFLFPNKQSLIEHSKVHAKETVPSASNVAPDDHREPTSPREELLQFLNLRPRSTAGSTVKPMTICIP  
 QLDPFTTYQAWQLATKGVAVAAQEEVKESGQEGSTDNDSCSEKEELGEI WVGGAEGSGKSKTSKSSCP  
 GLSQDKEKPRHANSEVPSGSDPKLSSSKEKPTHCSCESKAFRTYHQLVLSHRVHRKDRRTDAL SPTMAV  
 DARQPGTCS PDLSTTLED SGAGDREGGSEDGSDGLPDGLHLDKNDGGKAKPLPSSRECSYCGKFFRSN  
 YYLNIHLRHTHTGEKPYKCEFC EYAAAQKTS LRYHLERHHKDKQPVDAAAE SKSEGRSQEPQDALL TAADS  
 AQTKNLKRFLDGAKDVKGSPPAKQLKEMPSVFQSVLSPAHSNDTQDFHKHAADS AEKARKSPAPTYLDMQ  
 RKKAGEPQASSPVCRLEGVGSLAREAGHREKMDQADYRHKPGADCQDRPLNLSLGPLHACPAISL SKCL  
 IPSIACPFCTFKTFYPEVLM MHQRLEHRYNPDPHKNGSSKSVLRNRRTGCPALLGKDV PPLSGLH KPKA  
 KTA FSPHKS LHSEKARQ GASGPSKAPQ TSGPDNSTLAPS NLKSHRSQPNAGGTSATRQQQSELFPKGGV  
 PAAMDKVKRPEPKL KSLPASPSQSPLSSNNSNGSVEYPVKVDGPWAQQGRDY YCHNRSGSAAAEYSEPH  
 KRLKSSAVSLDTEHAGTNGRRGFELPKYHVYRSITSLLPPECVRPPPVLPHKARFLSPGEVESPSVLA VQ  
 KPYSASGPLYTCGPVGHAGGSPALEGKRPVSHQHLNSMLQKRSYENFIGNTHYRPNDKKP

TRTRPLE - GFP Tag - V

**Restriction Sites:**

SgfI-MluI

**Cloning Scheme:**

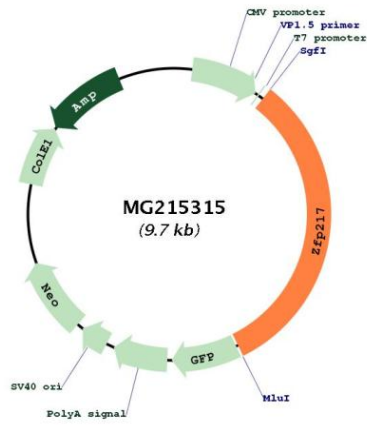


**ACCN:** NM\_001159683

**ORF Size:** 3123 bp

|                               |   |
|-------------------------------|---|
| <b>OTI Disclaimer:</b>        | The molecular sequence of this clone aligns with the gene accession number as a point of reference only. However, individual transcript sequences of the same gene can differ through naturally occurring variations (e.g. polymorphisms), each with its own valid existence. This clone is substantially in agreement with the reference, but a complete review of all prevailing variants is recommended prior to use. <a href="#">More info</a>  |
| <b>OTI Annotation:</b>        | This clone was engineered to express the complete ORF with an expression tag. Expression varies depending on the nature of the gene.  |
| <b>Components:</b>            | The ORF clone is ion-exchange column purified and shipped in a 2D barcoded Matrix tube containing 10ug of transfection-ready, dried plasmid DNA (reconstitute with 100 ul of water).  |
| <b>Reconstitution Method:</b> | <ol style="list-style-type: none"><li>1. Centrifuge at 5,000xg for 5min.</li><li>2. Carefully open the tube and add 100ul of sterile water to dissolve the DNA.</li><li>3. Close the tube and incubate for 10 minutes at room temperature.</li><li>4. Briefly vortex the tube and then do a quick spin (less than 5000xg) to concentrate the liquid at the bottom.</li><li>5. Store the suspended plasmid at -20°C. The DNA is stable for at least one year from date of shipping when stored at -20°C.</li></ol> |
| <b>Note:</b>                  | Plasmids are not sterile. For experiments where strict sterility is required, filtration with 0.22um filter is required.  |
| <b>RefSeq:</b>                | <a href="#">NM_001159683.1</a> , <a href="#">NP_001153155.1</a>   |
| <b>RefSeq Size:</b>           | 5670 bp   |
| <b>RefSeq ORF:</b>            | 3126 bp   |
| <b>Locus ID:</b>              | 228913  |
| <b>Cytogenetics:</b>          | 2 89.91 cM  |

Product images:



Circular map for MG215315