

## Product datasheet for **MG215304**

### Pspn (NM\_008954) Mouse Tagged ORF Clone

#### Product data:

**Product Type:** Expression Plasmids  
**Product Name:** Pspn (NM\_008954) Mouse Tagged ORF Clone  
**Tag:** TurboGFP  
**Symbol:** Pspn  
**Synonyms:** PSP  
**Mammalian Cell Selection:** Neomycin  
**Vector:** pCMV6-AC-GFP (PS100010)  
**E. coli Selection:** Ampicillin (100 ug/mL)  
**ORF Nucleotide Sequence:** >MG215304 representing NM\_008954  
 Red=Cloning site Blue=ORF Green=Tags(s)

TTTTGTAATACGACTCACTATAGGGCGGCCGGAATTCGTCGACTGGATCCGGTACCGAGGAGATCTGCC  
 GCC**CGATCGCC**

ATGGCTGCAGGAAGACTTCGGATCCTGTGTCTGCTGCTCCTGTCCTTGACCCGAGCCTCGGCTGGGTCC  
 TTGATCTTCAAGAGGCTTCTGTGGCAGATAAGCTCTCATTTGGGAAGATGGCAGAGACTAGAGGGACCTG  
 GACGCCCATCAGGGTAAACAACCATGTCCGCTCTCCAAGAGCCTTGGCTGGTTCATGCCACTGTGGAGC  
 CTGACCCTACCAGTGGCTGAGCTGGCCTGGGCTATGCCTCGGAGGAGAAGGTCATCTCCGATACTGTG  
 CTGGCAGCTGTCCCAAGAGGCCATACCCAGCACAGTCTGGTACTGGCCGGCTTCGAGGGCGGGGTCG  
 AGCCCATGGCCGACCCTGCTGCCAGCCACCAGCTATGCTGATGTGACCTTCCTTGATGATCAGCACCAT  
 TGGCAGCAGCTGCCTCAGCTCTCAGCTGCAGCTTGTGGCTGTGGTGGC

**ACGCGT**ACGCGGCCGCTCGAG - GFP Tag - GTTTAA

**Protein Sequence:** >MG215304 representing NM\_008954  
 Red=Cloning site Green=Tags(s)

MAAGRLRILCLLLL~~SLHPSL~~GWVLDLQEASVADKLSFGKMAETRGTWTPHQNNHVRLPRALAGSCLWS  
 LTL~~PVAELGLGYASEEKVIFRYCAGS~~CPQE~~AHTQHSLV~~LARLRGRGRAHGRPCQP~~TSYADV~~TLDDQH  
 WQLPQLSAAACGCGG

**TRTRPLE** - GFP Tag - V

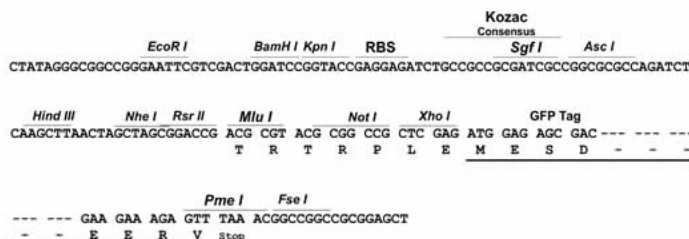
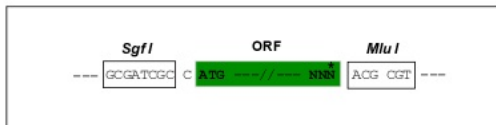
**Restriction Sites:** Sgfl-MluI



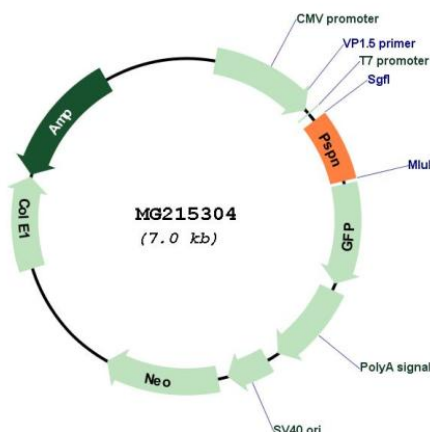
[View online »](#)

Cloning Scheme:

Cloning sites used for ORF Shutting:



Plasmid Map:



ACCN: NM\_008954

ORF Size: 468 bp

OTI Disclaimer: The molecular sequence of this clone aligns with the gene accession number as a point of reference only. However, individual transcript sequences of the same gene can differ through naturally occurring variations (e.g. polymorphisms), each with its own valid existence. This clone is substantially in agreement with the reference, but a complete review of all prevailing variants is recommended prior to use. [More info](#)

OTI Annotation: This clone was engineered to express the complete ORF with an expression tag. Expression varies depending on the nature of the gene.

<b>Components:</b>	The ORF clone is ion-exchange column purified and shipped in a 2D barcoded Matrix tube containing 10ug of transfection-ready, dried plasmid DNA (reconstitute with 100 ul of water).
<b>Reconstitution Method:</b>	<ol style="list-style-type: none"><li>1. Centrifuge at 5,000xg for 5min.</li><li>2. Carefully open the tube and add 100ul of sterile water to dissolve the DNA.</li><li>3. Close the tube and incubate for 10 minutes at room temperature.</li><li>4. Briefly vortex the tube and then do a quick spin (less than 5000xg) to concentrate the liquid at the bottom.</li><li>5. Store the suspended plasmid at -20°C. The DNA is stable for at least one year from date of shipping when stored at -20°C.</li></ol>
<b>RefSeq:</b>	<u>NM_008954.3</u>
<b>RefSeq Size:</b>	474 bp
<b>RefSeq ORF:</b>	471 bp
<b>Locus ID:</b>	19197
<b>Cytogenetics:</b>	17 D
<b>Gene Summary:</b>	This gene encodes a secreted ligand of the GDNF (glial cell line-derived neurotrophic factor) subfamily and TGF-beta (transforming growth factor-beta) superfamily of proteins. The encoded preproprotein is proteolytically processed to generate the mature protein. This protein signals through the RET receptor tyrosine kinase and a GPI-linked coreceptor, and promotes survival of neuronal populations. This protein may play a role in cell death, and nervous system development and function. Mice lacking a functional copy of this gene exhibit hypersensitivity to cerebral ischemia. [provided by RefSeq, Aug 2016]