

## Product datasheet for **MG215298**

### **Olfr73 (NM\_054090) Mouse Tagged ORF Clone**

#### Product data:

**Product Type:** Expression Plasmids  
**Product Name:** Olfr73 (NM\_054090) Mouse Tagged ORF Clone  
**Tag:** TurboGFP  
**Symbol:** Olfr73  
**Synonyms:** fascin-1; mOR-EG; MOR174-9  
**Mammalian Cell Selection:** Neomycin  
**Vector:** pCMV6-AC-GFP (PS100010)  
**E. coli Selection:** Ampicillin (100 ug/mL)  
**ORF Nucleotide Sequence:** >MG215298 representing NM\_054090  
**Red=Cloning site Blue=ORF Green=Tags(s)**

TTTTGTAATACGACTCACTATAGGGCGGCCGGAATTCGTCGACTGGATCCGGTACCGAGGAGATCTGCC  
GCC**CGATCGCC**

ATGACTCTGTCAGATGGAAATCACAGTGGGGCTGTGTTCCACCCTCTGGGCTTCTCAGATTATCCAGAAT  
TGACAATCCCTCTCTTTTGGATTTTCTCACCATCTACAGCATCACTGTGGTAGGAAATATTGGCATGAT  
TGCATAATCAGAATTAATCCCAAAGTGCACATCCCCATGTAATCTTTCTCAGCCACCTCTCTTTTGTG  
GATTTTGTATTCTCCATTGTTGCTCCCAAGATGCTGGTAAATCTAGTTACAATGAACAGAGGCATAT  
CATTTGTAGGATGCTTAGTGCAATCTTTTTTTCTGTACTTTCTGGTAACTGAATCTTTTCTATTAGG  
AGTGATGGCTTATGACAGTTTGTGGCCATCCGCAACCCTCTACTCTACACAGTGGCCATGTCCCAGAGG  
CTCTGTGCCATGCTGGTATTGGGATCCTATGCTTGGGGGGTGGTATGCTCCTTGATACTGACCTGCTCTG  
CCTTGAATCTTTCTTTTATGGTTTCAATATGATCAACCACTTTTTTTGTGAGTTCTCCTCTCCTTTTC  
ACTTTCACGCTCTGACACATCTGTCACTCACTGTTGCTTTTCTGTTTGGCCACTTTTAAATGAGATTAGC  
ACACTCCTTATCATTCTTGTCTTATGTGCTCATTGTTGTTACTATTCTGAAGATGAAGTCAGCAAGTG  
GACGCCGAAAGCCTTCTCCACTTGTGCTTCCCATCTGACAGCTATAACCATCTCCATGGAACAATCCT  
ATTCCTATACTGTGTACCTAACTCCAAGAACTCCAGGCATACCGTAAAAGTGGCCTCTGTGTTTTACACA  
GTGGTGATCCCCATGCTGAATCCCCTAATACAGTCTGAGAAATAAGGATGTCAAGGACACAGTAAAAA  
AAATAATAGGTAATAAGTCTATTCTTCT

**ACGCGTACGCGGCCGCTCGAG** - GFP Tag - GTTTAA



[View online »](#)

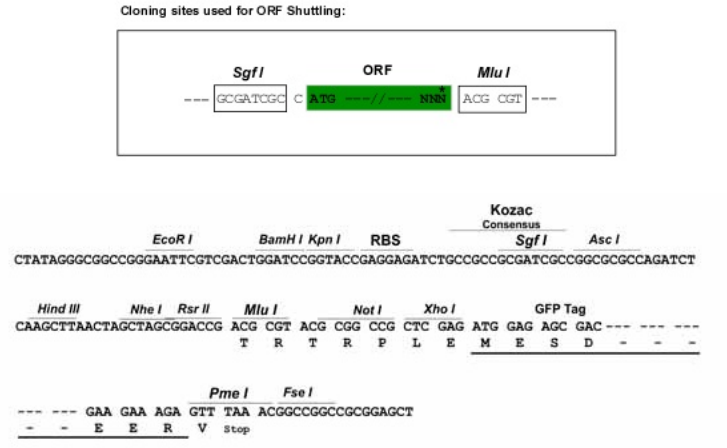
**Protein Sequence:** >MG215298 representing NM\_054090  
Red=Cloning site Green=Tags(s)

MTLSDGNHSGAVFTLLGFSDYPELTIPLFLIFLTIYSITVVGNIQMIVIRINPKLHIPMYFFLSHLSFV  
 DFCYSSIVAPKMLVNLVTMNRGISFVGLVQFFFCTFVVTESFLLGVMAYDRFVAIRNPLLYTVAMSQR  
 LCAMLVLGSIYAWGVVCSLILTCSALNLSFYGFNMINHFFCFSSLLSLSRSDTSVSQLLLFFVFATFNEIS  
 TLLIILLSYVLI VVTILKMKASASGRRKAFSTCASHLTAITIFHGTILFLYCVPNKNSRHTVKVASVFYT  
 VVIPMLNPLIYSLRNKDVKDTVKKIIGTKVYSS

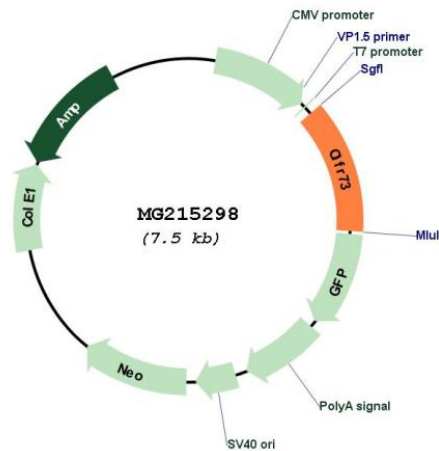
TRTRPLE - GFP Tag - V

**Restriction Sites:** SgfI-MluI

**Cloning Scheme:**



**Plasmid Map:**



**ACCN:** NM\_054090

**ORF Size:** 939 bp

<b>OTI Disclaimer:</b>	<p>Due to the inherent nature of this plasmid, standard methods to replicate additional amounts of DNA in E. coli are highly likely to result in mutations and/or rearrangements. Therefore, OriGene does not guarantee the capability to replicate this plasmid DNA. Additional amounts of DNA can be purchased from OriGene with batch-specific, full-sequence verification at a reduced cost. Please contact our customer care team at <a href="mailto:custsupport@origene.com">custsupport@origene.com</a> or by calling 301.340.3188 option 3 for pricing and delivery.</p> <p>The molecular sequence of this clone aligns with the gene accession number as a point of reference only. However, individual transcript sequences of the same gene can differ through naturally occurring variations (e.g. polymorphisms), each with its own valid existence. This clone is substantially in agreement with the reference, but a complete review of all prevailing variants is recommended prior to use. <a href="#">More info</a></p>
<b>OTI Annotation:</b>	This clone was engineered to express the complete ORF with an expression tag. Expression varies depending on the nature of the gene.
<b>Components:</b>	The ORF clone is ion-exchange column purified and shipped in a 2D barcoded Matrix tube containing 10ug of transfection-ready, dried plasmid DNA (reconstitute with 100 ul of water).
<b>Reconstitution Method:</b>	<ol style="list-style-type: none"> <li>1. Centrifuge at 5,000xg for 5min.</li> <li>2. Carefully open the tube and add 100ul of sterile water to dissolve the DNA.</li> <li>3. Close the tube and incubate for 10 minutes at room temperature.</li> <li>4. Briefly vortex the tube and then do a quick spin (less than 5000xg) to concentrate the liquid at the bottom.</li> <li>5. Store the suspended plasmid at -20°C. The DNA is stable for at least one year from date of shipping when stored at -20°C.</li> </ol>
<b>RefSeq:</b>	<a href="#">NM_054090.1</a> , <a href="#">NP_473431.1</a>
<b>RefSeq Size:</b>	942 bp
<b>RefSeq ORF:</b>	942 bp
<b>Locus ID:</b>	117004
<b>Cytogenetics:</b>	2 D
<b>Gene Summary:</b>	<p>Olfactory receptors interact with odorant molecules in the nose, to initiate a neuronal response that triggers the perception of a smell. The olfactory receptor proteins are members of a large family of G-protein-coupled receptors (GPCR) arising from single coding-exon genes. Olfactory receptors share a 7-transmembrane domain structure with many neurotransmitter and hormone receptors and are responsible for the recognition and G protein-mediated transduction of odorant signals. The olfactory receptor gene family is the largest in the genome. The nomenclature assigned to the olfactory receptor genes and proteins for this organism is independent of other organisms. [provided by RefSeq, Jul 2008]</p>