

Product datasheet for **MG215234**

Heph (NM_181273) Mouse Tagged ORF Clone

Product data:

Product Type:	Expression Plasmids
Product Name:	Heph (NM_181273) Mouse Tagged ORF Clone
Tag:	TurboGFP
Symbol:	Heph
Synonyms:	C130006F04Rik; Cpl; mKIAA0698; sla
Mammalian Cell Selection:	Neomycin
Vector:	pCMV6-AC-GFP (PS100010)
E. coli Selection:	Ampicillin (100 ug/mL)



[View online »](#)

ORF Nucleotide Sequence:

>MG215234 representing NM_181273
 Red=Cloning site Blue=ORF Green=Tags(s)

TTTTGTAATACGACTCACTATAGGGCGGCCGGAATTCGTGCGACTGGATCCGGTACCGAGGAGATCTGCC
 GCC**CGCATCGCC**

ATGAAGGCAGGCCATCTTCTCTGGGCTTTACTGTTGATGCACTCCTTGTGGTCTATACCAACTGATGGGG
 CCATTCGAAACTACTACTTGGGCATCCAGGATATGCAGTGGAACTATGCTCCCAAAGGAAGAAATGTCAT
 CACAAATCAGACTCTCAACAATGACACAGTGGCTTCCAGTTTCTGAAAGTCTGGCAAAAAAGGATAGGG
 AGTAGTTACAAGAAGACTGTTTATAAGGAATACAGTGTGGCACATACACTGAAGAAATAGCCAAGCCTG
 CCTGGTTGGGCTTCTAGGACCACTGTTACAGGCTGAGGTGGGGGATGTCATCTTGATTCACCTGAAGAA
 TTTTGGCAGCCGACCTTACACCATTACCCCTCACGGTGTTTTTTATGAGAAGGACTCAGAAGGCTCACTA
 TACCCAGATGGTCTTCTGGGTATCTGAAAGCGGATGATTCTGTCCCCCTGGGGCAGCCATGTCTACA
 ACTGGAGTATCCAGAAAGTCATGCCCCACTGAGGCAGACCCAGCATGCCTCACCTGGATTTACCACTC
 GCATGTAGATGCTCAAGAGACATTGCAACTGGTCTCATTGGACCTTTATCACCTGTAAGAGGGGACC
 CTGGATGGTAATTCACCCCTCAGAGGAAGGATGTGGACCATAATTTCTTCTCCTTTCAGTGTGATAG
 ATGAGAACCTTAGCTGGCACCTTGATGACAACATTGCTACTTACTGCTCAGACCCCTGCCTCGGTGGACAA
 AGAAGATGGAGCCTTTCAAGACAGCAACAGGATGCATGCAATCAATGGGTTTGTCTTTGGGAACTTACCA
 GAGTTGAGCATGTGTGCACAGAAGCATGTGGCCTGGCACTTGTGGCATGGGCAATGAAATAGATGTCC
 ACACAGCTTTCTCCATGGACAGATGCTGAGTATCCGTGGACACCACACTGATGTTGCAACATTTTTTCC
 AGCTACCTTTGTGACTGCTGAGATGGTGCCCAAAAAGTCTGGAACCTGGTAATTAGCTGTGAAGTGAAC
 AGCCACTTGAGAAGTGGCATGCAGGCCTTCTACAAGGTTGACTCTTGTCCATGGACCCACTGTGGACC
 AGCTCACTGGCAAAGTTCGTCACTACTTCACTCAGGCCATGAGATTCAATGGGACTATGGTCCAATAGG
 GTATGATGGCAGAACTGGGAAGAGTTTGAGAGAGCCAGGAAGTGGCCAGATAAGTACTTCCAGAAGAGC
 TCTAGTCGAATTGGAGGTAATGTTGAAAGTTCGATATGAAGCCTTTCAAGATGAGACATTCCAGGAAA
 GGGTACATCAGGAAGAAGAAACACATCTTGAATACTGGGACCAGTGATAAGGGCTGAAAGTGGTGACAC
 CATCCAGGTGGTCTTCTATAACCGTGCCTCCAGCCATTGAGCATACAGCCCATGGTGTCTTTTATGAG
 AAAAAGTCTGAGGGCACCGTGTACAATGATGATCCACAAGAGATACAAATCTGGCCTGGTGGGCCCTC
 TACTGGTGTGCAAGGCTGGGGCCTTGGGTGCAGATGGCAAGCAGAAAGGAGTGGATAAAGAAATTTTTCT
 CCTCTTCACTGTGTTGATGAGAATGAGAGCTGGTACAACAATGCCAATCAGGCAGCTGGTATGTTGGAT
 TCCCGACTGCTCTCAGAGGATGTGAGGGCTTCCAGGACTCCAATCGAATGCATGCTATTAATGGATTTT
 TGTCTCTAACCTGCCAGGCTGGACATGTGCAAGGGTGATACTGTGGCCTGGCACCTGCTTGGCCTGGG
 CACAGAGACTGATGTACATGGGGTAATGTTGAGGGCAACACTGTGCAGCTTCAGGGCATGAGGAAAGGT
 GCAGTCATGCTCTTCTCACACCTTGTGACGGCCATCATGCAGCCTGACAATCCTGGAATATTTGAAA
 TCTACTGCCAAGCAGGCAGCCACCGAGAGGAAGGGATGCAGGCAATTTATAATGTCTCTCAGTGTCTAG
 TCATCAAGACAGCCACGCCAACACTACCAAGCTTCAAGAGTCTACTATATCATGGCAGAAGAGATAGAG
 TGGGATTACTGCCTGATAGAAGCTGGGAACTGGAATGGCATAACACATCTGAGAAAGACAGCTATGGCC
 ATGTTTTCTGAGCAATAAAGATGGGCTCCTGGGTTCCAAATATAAGAAAGCTGTATTCAAGGAATACAC
 TGATGGTACTTTTCAAGTACCTCGCCAAGGCTGGACCAGAGGAGCATTGGGAATCCTGGGTCCACTT
 ATCAGAGGAGAGGTTGGTATATCTTACTGTAGTGTTCAAGAATAAGGCCAGTCGACCATATTCTATAC
 ATGCCATGGAGTCTAGAACTAACACTGGCGGCCACAGGCTGCTGAGCCTGGTGGAGTTGGAGCACTT
 AATGAAGAGACAAAGGCTTTACAATCCTTTTACTTTAGTCTTCTGGTTTTTCTTTTCAACATATTACAT
 TCTTGGGCTGGGCAGGTCACT

ACGGTACGCGGCCGCTCGAG - GFP Tag - GTTTAA

Protein Sequence: >MG215234 representing NM_181273
Red=Cloning site Green=Tags(s)

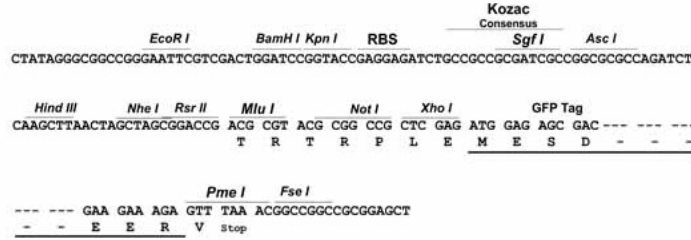
```
MKAGHLLWALLLMHLSWSIPTDGAIRNYLGIQDMQWNYAPKGRNVITNQLNNDTVASSFLKSGKNRIG
SSYKKTVYKEYSDGTYTEEIAKPAWLGFLGPLLQAEVGDVILIHLKNFASRPYTIHPHGVEYKDESEGL
YPDGSSGYLKADDSVPPGGSHVYNWSIPE SHAPTEADPACLTWIYHSHVDAPRDIATGLIGPLITCKRGT
LDGNSPPQRKDVDHNFLLFSVIDENLSWHLDDNIATYCSDPASVDKEDGAFQDSNRMHAINGFVFGNLP
ELSMCAQKHVAWHLFGMGNEIDVHTAFFHGQMLSIRGHHTDVANIFPATFVTAEMVPQKSGTWLISCEVN
SHLRSGMQAFYKVDSCSMDPPVDQLTGKVRQYF IQAHEIQWDYGP IGYDGR TGKSLREPGSGPKYFQKS
SSRIGGTYWKVRYEAFQDETFQERVHQEEETHL GILGPVIRA EVGDTIQVVFYNRASQPF SIQPHGVFYE
KNSEGTVYNDP TRDTNSGLVGPLLVCKAGALGADGKQKGV DKEFFLLFTVFDENESWYNNANQAAGMLD
SRLLSEDEVEGFQDSNRMHAINGFLFSNL PRLDMCKGDTVAWHLLGLGTETDVHGV MFEGNTVQLQGM RKG
AVMLFPHTFVTAIMQPDNPGIFEIYCQAGSHREEGMQAIY NVSQCSSHQDSPRQH YQASRVYYIMAE EIE
WDYCPDRSWELEWHNTSEKDSYGHVFLSNKDGLLGSKYKKA VFREYTDGTFRIPRPRSGPEEHLGILGPL
IRGEVGDILT VVFKNKASRPYSIHAHGVLESNTGGPQAAEPGELEHLMKRQRLYNPFTLVFWFIPFNILH
SWAGQVT
```

TRTRPLE - GFP Tag - V

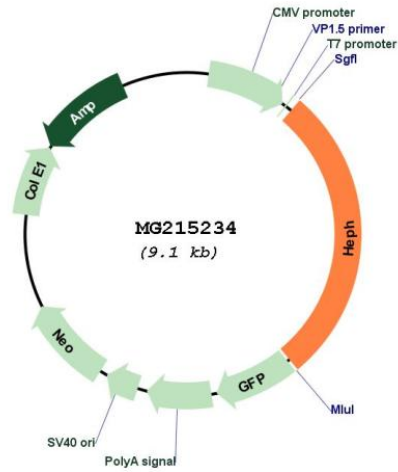
Restriction Sites: Sgfl-MluI

Cloning Scheme:

Cloning sites used for ORF Shutting:



Plasmid Map:



ACCN:	NM_181273
ORF Size:	2541 bp
OTI Disclaimer:	The molecular sequence of this clone aligns with the gene accession number as a point of reference only. However, individual transcript sequences of the same gene can differ through naturally occurring variations (e.g. polymorphisms), each with its own valid existence. This clone is substantially in agreement with the reference, but a complete review of all prevailing variants is recommended prior to use. More info
OTI Annotation:	This clone was engineered to express the complete ORF with an expression tag. Expression varies depending on the nature of the gene.
Components:	The ORF clone is ion-exchange column purified and shipped in a 2D barcoded Matrix tube containing 10ug of transfection-ready, dried plasmid DNA (reconstitute with 100 ul of water).
Reconstitution Method:	<ol style="list-style-type: none">1. Centrifuge at 5,000xg for 5min.2. Carefully open the tube and add 100ul of sterile water to dissolve the DNA.3. Close the tube and incubate for 10 minutes at room temperature.4. Briefly vortex the tube and then do a quick spin (less than 5000xg) to concentrate the liquid at the bottom.5. Store the suspended plasmid at -20°C. The DNA is stable for at least one year from date of shipping when stored at -20°C.
RefSeq:	NM_181273.4 , NP_851790.1
RefSeq Size:	3931 bp
RefSeq ORF:	2544 bp
Locus ID:	15203
UniProt ID:	Q9Z0Z4
Cytogenetics:	X 42.69 cM
Gene Summary:	May function as a ferroxidase for ferrous (II) to ferric ion (III) conversion and may be involved in copper transport and homeostasis. Implicated in iron homeostasis and may mediate iron efflux associated to ferroportin 1.[UniProtKB/Swiss-Prot Function]