

Product datasheet for **MG215229**

Ppl (NM_008909) Mouse Tagged ORF Clone

Product data:

Product Type: Expression Plasmids
Product Name: Ppl (NM_008909) Mouse Tagged ORF Clone
Tag: TurboGFP
Symbol: Ppl
Synonyms: AW553870
Mammalian Cell Selection: Neomycin
Vector: pCMV6-AC-GFP (PS100010)
E. coli Selection: Ampicillin (100 ug/mL)
ORF Nucleotide Sequence: >MG215229 representing NM_008909
Red=Cloning site Blue=ORF Green=Tags(s)

TTTTGTAATACGACTCACTATAGGGCGCCGGGAATTCGTCGACTGGATCCGGTACCGAGGAGATCTGCC
GCC**CGATCGCC**

ATGCACTCGTCTTCAGGAAGAGAAACAAGGCAATACAGCCCAACGGTGCAGACGCGGAGCATCTCCA
ACAAGGAAGCTCTCAGATCTGATTGAGCAGCTGCAGAAGAATGCAGACCAGGTGGAAGGAACATTGTGGA
CACCGAGGCCAAGATGCAGAGCGACTTGGCCCGGATGCAAGAGGGGCAGCTCCCTGAGCACCGGGACGCG
GCCCTGCAGAACGTGTGACTCAGAAAAGCTGTGTACGTGCTGGAGGCAGATTCGCCATCGCCAAGC
ACATGAAGCACCCACAGGGGACATGATCGCCGAGGACATCCGCCAGCTGAAAGAGCGCGTGACCAACCT
CGGGGGAAACACAAGCAGATGTACAGCCTGGCAGTGAAAGAGGCCGACCCGAGAGTCAACTGGGACACA
CTGGTGGACGAGAAGCTGGACAAGCTGAGCAGCCAGAGCTTTGGGACTGACCTTCTCTGGTGGATAGCC
AGGTGGAGCAACACAACATCTTCCACAATGAAGTCAAAGCCATCGGGCCCCACCTGGCCAAGGACAAGGA
GCAGAACAGTGAAGTCCAAGCCAAGTATCAGAAGTTGCTGACAGCATCACAGGCACGGCAGCAGCACCTG
AGCTCGCTGCAGGATTACATGCAGCGCTGCACCAATGAGCTGTACTGGCTGGACCAGCAAGCCAAGGGCC
GCATGCAGTATGACTGGAGCGACCGCAACCTCGACTACCCAGCCGCGCCGCGCAGTACGAGAATTTTCAT
CAACCGGAACCTGGAGGCCAAAGAAGAAGAATCAACAACTGCACACTGAAGGTGACCAACTGCTGACA
GCTGAGCACCCAGGGAGGAAGCTCATTGAGGCACACATGGAGGCTGTGCATGCTGAGTGGAGGAGTACC
TGAACCTGCTCATCTGTGAGGAGAGCCATCTGAAATACATGGAAGACTACCACCAATTTACAAAGACAT
GAAGGATGCTCAGGAGCTGCTACGCAAGGTGGACTCAGACTTGAACCAGAAATATAGCCCTGACTTCAAA
GACCGGTATCAGATAGAGCTGTTGCTTCGGGAAGTGGATGACCAGGAGAAGGCTCTGGACAAGTATGAGG
ATGTGGTGCAGGGCTGCAGAGGCGAGGGCAGCAAGTGGTGCCACTCAAGTACCGCCGAGAGCGCCGCT
CAAGCCCATCCCTGTGGAGGCTCTCTGTGACTTTGAGAGTGACCAGGGCCTCATCTCGGGGGCTATAGC
TACACTGCAGAAGAACAACGGGGAGAGCTGGGAGCTGACAGACAGCACTGGGAAGAAGCTGGCTGCC
CAGCCGCTGCTTCATCATTCCCCCACCAGCCCGAGGCCTTGCTCTTGTGACAGCTGGGCAGCCA
GTACCGAAGTGTGAGGCAGAAGGCGACTGGGAGCAACATGCACTCCAGCAGCGCATGAGGTGCTAAGG



ACGGAGAACCCTGGAGATGCCTCTGATCTTCAGGGACGACAGCTGCTGGCTGGCTTGACAAAAGTGGCCA
 GTGACCTGGACCGGCAGGAAAAGGCTATCACAGGGATCCTACGGCCACCCTTGAGCAGGGACGGGCAAT
 TGAGGATAGTGC GGAGCGGGCAAGGGTCTCAAGAACATTACCAATGAGCTGCTACAGATTGAGCCAGAG
 AAGACGCAGTGACAGCCGAGTGTGAAGCCTTTGTGCAGGCCCTCCCGCCAGCGGCACCCGACCCCTTGC
 TGAAGACCCGGGTAGAAGACACCAACCAGAAATATGAGCGACTAGTATGGTTGCTAGAGGCAGCCCAGGA
 GAAGGTGGACGTGGCCAACCGCCTGGAGAACAGTCTGCAGCGGGCAGGGAGCTGCTGGCCTCATACGAG
 AACAGGTGATTACGACGACACAATGCCTGAAAGTGGTCAATGTGTTGGACAGCAAGAGGCAGGAGCTGG
 AGGCCATGGCTTCTGAGCTGCAGGCCACAAGTCCCTCCTGGGTGAGGTGGAACAGAACCTACAGGTGGC
 CAAGCAGTGTTCCAGCTCACTGGCCAGCGCTTCCAAGAGCACTGCCCTGACCTGGAGCGGCAGGAGGCC
 GAGGTGCACAAGCTCAACCAACGTTTCAACAACCTCAGCCAGCAGGTGGAACGGAGGGCCAGAGCCTGC
 AGAGTGCCAGGGCTGCCTACGATGAATACTGCAGTGGTTACAACCGTGTGCTCCAGTTTTTGGCCAAGAC
 TCCCGATTATGAGCCCCAGGAGACAGACAGCCTCGGCCAGATGGAGACCAAGCTCAAGAACCAGAAGAAC
 TTGCTTGATGAGCTAGCAAGCAGGGAACAGGAGGTGCAGAAGTCTATGCAGATCCCAGCAGTACCAGC
 AAGCGGTGAAGGACTATGAACCTGAAGCAGAGAAGCTAAGTCTTGGCTGGACCTGGAGAATGGACGGAA
 CAGCCATGTGAACAAGAGAGCCAGGCTGCAGTCTCCTGCTGCCAAAGTGAAGGAAGAGGAAGCTGCTCTT
 GCTGCCAAGTTACAGAGGTTAATGCCATCAACAGACAGAGGCTACAGAAATTTGGAGTTTGCAGTGAATC
 TCTTGAGACAGCAACCAGAAGCAGGAGTGACCCATGAGACCTACAAGGGGAAAGCTAAGCTCTGGCAT
 GGAGGAAACATGGAAGATTAAGAAGAACTGGAGGAGGAGATAGAGCGAAGGCAACAGCTGGAAAATGAG
 GTCAAGAGTGCCAGGAGGAAAATCCAGACCCTGAAGGATCAGGGGCCCTCAGGAGTCAATGGTGAGGAAGG
 AGGTGCTGAAGAAGGTGCCAGACCCTGCCCTGGAGGAGAGCTTCCAGCAGCTGCAGCAGACGCTGGCTGA
 GGAACAGCACAGAACCAGCTATTGCAGGAGGAGCTGGGAGCACTGCAGCTCCGGCTGCAGGCTCTAGAG
 CAGGAGACCAGGGATGGGGACAGGAGTATGTGGTCAAGGAGGTCTTGCAGATTGAGCCAGACAGAGCCC
 AGGAGGATGAGGTCTTGCAGCTTCGGGAGGAGCTGGAGGCACTCGGGCCAGAAAAGGCCCGCCAGAGGC
 TGAAGTGCTACTTTACAGCAGCGTGTAGCAGCCCTGGCTGCTGAGAAGAGCAGGTTGCAGGAAAAGGTC
 ACTGAGAGAGAGGTGGTAAAGCTACAGAATGACCCCAACTGGAGGCAGAATACCGGAGGCTGCAGGAGG
 AGCACCAGCGGGAGGGCACACTCAGGGAGAAGCAGGAGGAGGAGCTGAGTTTCTACAGGCTAAGCTCAG
 GAGACTGGAGAAAAGAACGAGCCATGGCAGAAGGCAAGATCACTGTCAAAGAGGTGCTCAAGGTAGAGAAA
 GATGCAGCTGTGGAGAGAGAAGTCAATGACCTCACCCGCCAGTATGAGGACGAGGCTGCCAAGGCACGCT
 CTGGCCAGCGGGAGAAGACAGAACTTCTCAGAAAGATATGGGCCCTGGAAGAGGAAAATGCTAAGGTGGT
 GGTACAGGAGAAGGTCCGAGAGATCGTGC GGCCAGATCCCAAGGCAGAGAGTGAAGTGGCCAACCTCCGC
 CTGGAGCTGGTGGAGCAGGAGCGCAAAATCAGGGGTGCTGAGGAGCAGCTGAAGAGCTACCAGAGTGAGC
 TGGAGGCCCTACGGAACCGTGGACCACAGGTAGAAGTCAAAGAGGTGACCAAGAGGTCATTAATATAC
 AACTGACCAGAGACAGAGCAGGAACTCCAGAGGCTCAGGGAGGAGATCATGGACAAAGACCAGGTTAATA
 GAAAGGTGTGACCTAGAGATTTACCAGCTGAAGCAGGAGATCCAGGCCCTTAAGGACACCAAGCCACAGG
 TGCAGACTAGAGAGGTAGTCCAGGAGATCCTGCAGTTCAGGAAGACCCCAACCAAGAAGGAGGTAGA
 GTCTCTGCGTATACAGCTGTGAGAAGAACAAGAAGAACAGGTGGACCTGGAAGGGGAGCGGGCATCCAG
 GAAGAGAAGATCAAACGCAAGGAGGAAGAGCTGGCACAGGGGAAGGAAAGGGTTGACGCCAGGAGGTAG
 TACAGTATGAAGATGAGCCAGATTTGCGAGCTGAGGTGACTGCCTTACAAACAGCATTGATGCTGAGCT
 CGGCAGATTGATAAACTGCATGTGGAGCTACGGCGGTTACAGCATCGCCGAGCAGAGCTGGAGAGGCAG
 TTGGAGGAGCTGGAGCGGGAGAGGCAGGCACGTAGGGCAGCCGAGCTGGAGGTACAGAGGCTGCAACAGC
 GGCTGGCTGCATTGGAGCAGGAGGAGGCCAAGACTGGTGAGAAGGTGACCCACACACAAAAGGTGGTGTCT
 GCAGCAGGACCCACAGCAGACCAGGAGCATGCCCTGCTCCGAGCCAGCTGGAGGAAGAGCGGCACCCGG
 AGGCAGCTACTGGAGGGTGAAGTGTGAGCCGCTGCGTAGAAAAGTTGGTGCCTGGAGAAGGCAGAGATCA
 AAGAAAAGGTGGTCTTCTGAGAGTGTCCAGGTAGAAAAGGTGACACTGAGCAAGAGATCCAGCGCCT
 CAAGAAGAGCCTGGAAGAGGAGAGCCAGAGCAAGAGGGAGCTGGATTGAGAGGTGACCCGGCTAGAAGCC
 AAGTTATCTGAGCTAGAATTCTATAATTCAGTCAATCAAGGAACTGGACTTCTGAGAGAAGAAAACC
 ACAAGCTACAGCTAGAGCGGCAAAACCTGCAGCTAGAGACCCGGAGACTCCAATCAGAGATTGAGATGGC
 AGCAACAGAAAACCTGAGATCTGAAGAACATAACCACGATAGACTCTGGGACCCACCTAAACTCTAGGCTG
 TGGTCCCTAGAGAAGGAACTGGATGACCTCAAGAAGATGTCCAAGGACAAGGATCTGGAGATCGATGAAC
 TACAGAGGCGCCTGGGCTCTGTGGCTGTCAAGAGAGAGCAGAGGGAGAACCACCTGAGGCCTCCATAGT
 GGTGATAGACCCTGACACAGGTGCTGAGCTGTCCCGAGGAGGCTCACCAGGCTGGGCTTATCGACTGG
 AAAATGTTGTGAAGCTCAGAAGCCAGGAGTGCAGTGGAGGAGATATCAGTGAAGGTCTAATGGGG

AGTCATCAGTAATTCATGACAGGAAGTCAGGCAAGAAGTTCTCCATTGAGGACGCTCTTCAGAGTGGCAG
GCTAACCGCTGCTCAATATGACCGCTATGTCAACAAGGATATGTCCATTCAGGAGCTGGCAGTCTTGGTG
TCTGGGCAGAAG

ACGCGTACGCGGGCCGCTCGAG - GFP Tag - GTTTAA

Protein Sequence:

>MG215229 representing NM_008909

Red=Cloning site Green=Tags(s)

MHSLFRKRNGKYSPTVQTRISINKEISDLIEQLQKNADQVERNIVDTEAKMQSDLARMQEGQLPEHRDA
ALQNVSDSEKLLYVLEADSAIAKHMHPQGDMAIEDIRQLKERVNTLRGKHKQMYSLAVKEADPRVNWDT
LVDEKLDKLSQSFQGTDLPLVDSQVEQHNI FHNVEVKAIGPHLAKDKEQNSLQAKYQKLLTASQARQHL
SSLQDYMQRCTNELYWLDDQAKGRM QYDWSDRNLDYPSRRRQYENFINRNLEAKEERINKLHTEGDQLLT
AEHPGRNSIEAHMEAVHAEWKEYLNLLICEESHLYMEDYHQFHKDMKDAQELLRKVSDLNQKYSDFK
DRYQIEI LLLRELDDQEKALDKYEDVVRGLQRRGQQVVP LKYRRETP LKPIPVEALCDFESDQGLISRGYS
YTLQKNNGESWELTDSTGKLAAPAVCFIIPPTDPEALALADSLGQYRSVRQKATGSKHALQQRHEVLR
TENPGDASDLQGRQLLAGLDKVASDLDRQEKAITGILRPPLQEGRAIEDSAERAKGLKNITNELLQIEPE
KTQCTAECEAFVQALPASGTAPLLKTRVEDTNQKYERLVWLEAAQEKVDVANRLENSLRGREGRELLASYE
NRLIQDDTMPESGHVLDSCRQLEAMASELQAHKSLLEGEVQNLQVAKQCSSSLASRFQEHCPDLERQEA
EVHKLNRQFNLLSQQVERRAQSLSARAAYDEYCSGYNRVLQFLAKTPSYEPQETDLSGQMETKLNQKN
LLDELASREQEVQKVVYADSQQYQAVKDYELEAEKLRSLDLLENGRNSHVNKRRARLQSPA AKVKEEEAAL
AAKFTEVNAINRQRLQNL E FALNLLRQQPEAGVTHE TLQGGKLSGMEETWKIKKEL EEEIERRQLENE
YKSAQEEIQTLKDQGPQESLVRKEV LKKVPDPAL EESFQQLQQT LAEEQHKNQLLQEELGALQLRLQALE
QETRDGGQ EYVVKVLR IEPDRAQEDEV LQLREELALRRQK GAREAEV LLLQQRVAALAAEKSRVQEKV
TEREVVKLQNDPQLEAEYRRLQEEHQREGTLREKQEEELSFLQAKLRLEKERAMAEK I TVKEVLKVEK
DAAVEREVNDL TRQYEDEAAKARSGQREKTELLRKIWALEEENAKVVVQEKVREI VRPDPKAESEVANLR
LELVEQERKFRGAEELKSYQSELEALNRGPPQVEVKEVTKV EIKYTTDPETEQLQRLREEIMDKTRLI
ERCdleIYQLKQEI QALKDTKPQVQTRREV VQEI LQFQEDPQTKEVESLRIQLSEEQKKQVDLEGERASQ
EEKIKRKEEELAQGKERVVRQEVVQYEDPDLRAEVTAF TNSIDAELRQIDKLVHLLRRLQHRRAELEERQ
LEELERERQARRAAELEVQRLQQR LAAL E QEEAKTGEKVTH TQKVV LQQDPQQTREHALLRAQLEERHR
RQLLEGELEPLRRKLAALAEKAEIKEKVV FSESVQVEKGDTEQEIQR LKKSLEESQSKRELDSEVTRLEA
KLSELEFYNSKSSKELDFLREENHKLQLERQNLQLETRRLQSEIEMAATETRDLKNITTTIDSGHLNSRL
WSLEKELDDLKMSKDKDLEIDELQRR LGSVAVKREQRENHLRRSIVVIDPDTGRELSPEEAHRAGLIDW
KMFVKLRSEQCDWEEISVKGPNGESSVIHDRKSGKFSIEDALQSGRLTAAQYDRYV NKDMSIQELAVLV
SGQK

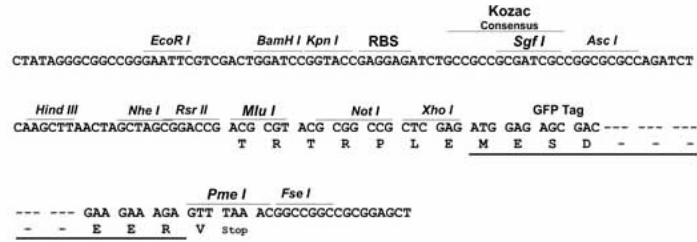
TRTRPLE - GFP Tag - V

Restriction Sites:

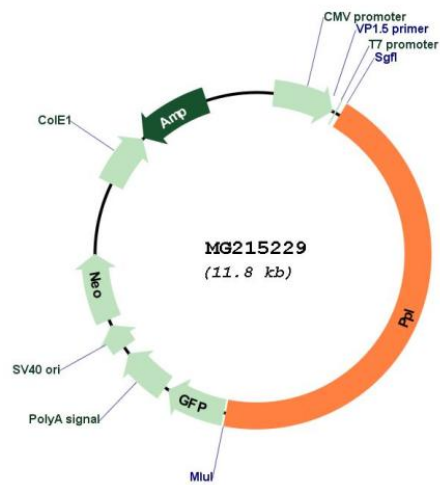
Sgfl-MluI

Cloning Scheme:

Cloning sites used for ORF Shutting:



Plasmid Map:



ACCN:	NM_008909
ORF Size:	5262 bp
OTI Disclaimer:	<p>Due to the inherent nature of this plasmid, standard methods to replicate additional amounts of DNA in E. coli are highly likely to result in mutations and/or rearrangements. Therefore, OriGene does not guarantee the capability to replicate this plasmid DNA. Additional amounts of DNA can be purchased from OriGene with batch-specific, full-sequence verification at a reduced cost. Please contact our customer care team at custsupport@origene.com or by calling 301.340.3188 option 3 for pricing and delivery.</p> <p>The molecular sequence of this clone aligns with the gene accession number as a point of reference only. However, individual transcript sequences of the same gene can differ through naturally occurring variations (e.g. polymorphisms), each with its own valid existence. This clone is substantially in agreement with the reference, but a complete review of all prevailing variants is recommended prior to use. More info</p>
OTI Annotation:	This clone was engineered to express the complete ORF with an expression tag. Expression varies depending on the nature of the gene.
Components:	The ORF clone is ion-exchange column purified and shipped in a 2D barcoded Matrix tube containing 10ug of transfection-ready, dried plasmid DNA (reconstitute with 100 ul of water).
Reconstitution Method:	<ol style="list-style-type: none"> 1. Centrifuge at 5,000xg for 5min. 2. Carefully open the tube and add 100ul of sterile water to dissolve the DNA. 3. Close the tube and incubate for 10 minutes at room temperature. 4. Briefly vortex the tube and then do a quick spin (less than 5000xg) to concentrate the liquid at the bottom. 5. Store the suspended plasmid at -20°C. The DNA is stable for at least one year from date of shipping when stored at -20°C.
RefSeq:	NM_008909.2 , NP_032935.2
RefSeq Size:	6277 bp
RefSeq ORF:	5265 bp
Locus ID:	19041
UniProt ID:	Q9R269
Cytogenetics:	16 2.5 cM
Gene Summary:	Component of the cornified envelope of keratinocytes. May link the cornified envelope to desmosomes and intermediate filaments. May act as a localization signal in PKB/AKT-mediated signaling.[UniProtKB/Swiss-Prot Function]