

## Product datasheet for **MG215218**

### Lrp3 (NM\_001024707) Mouse Tagged ORF Clone

#### Product data:

Product Type:	Expression Plasmids
Tag:	TurboGFP
Symbol:	Lrp3
Mammalian Cell Selection:	Neomycin
Vector:	pCMV6-AC-GFP (PS100010)
E. coli Selection:	Ampicillin (100 ug/mL)



[View online »](#)

ORF Nucleotide Sequence: >MG215218 representing NM\_001024707  
Red=Cloning site Blue=ORF Green=Tags(s)

TTTTGTAATACGACTCACTATAGGGCGCCGGGAATTCGTGACTGGATCCGGTACCGAGGAGATCTGCC  
GCCGCGATCGCC

ATGGAGAAGCGCGCGCCGGGGCCGGAGGGGCGCCGGGGCCAGGGCGCCGCTCGCAGTCGTCTGCC  
TGGTGAACCTCTTTCTCACTGGGAGGCTCAGCAGTGCAGTTCCCGCCTTAGGCAAAGCAGGAGCTACGTG  
GGGTTTCGGGTTTCAGGCTGCCACTGAGCCACTGGGACTCAAGCCGCCTGCAGTGGAAAGTTGGAACAG  
CACACTGAACGTCGAGGGGTTATCTACAGCCCAGCCTGGCCCTCAACTACCTCCAGGCACCAACTGCA  
GCTGGTACATTCAAGGAGACCGTGGTGACATGACTATCAGTTTCCGAAACTTCGATGTAGAGGAGTC  
TACCAGTGTCCCTCGACTGGCTCCTGTTGGGCCAGCAGCTCCTCCTCGCCAGGAGGCCTCCGCCTC  
TGCGGCTCAGCCATCCCACCCGCTTCATCTCTGCCCGTGACCAGTCTGGATCTTCTTCCACTCAGACG  
CCTCCAGCTCTGGCCAGGCCAGGGCTCCGCCTCTCTATATCCGAGGAAGCTGGCCAGACATCCTG  
CCAGACAGATGAGTTCGCTGTGACAACGGTAAATGCCTGCCTGGTCTTGGCAGTGAACATGGTGGAT  
GAGTGTGGAGACGGCTCGGATGAGGTAATGCTCAGCACCTGCCTCAGAGCCACCAGGCAGCCTGTGCC  
CCGGGGGCACCTTCCCCTGCAGCGGAGCCGCTCCACACGCTGCCTGCCTGTGGAGCGGGCTGCGACGG  
CACTCAGGACTGCGGTGACGGCTCTGATGAGGCTGGCTGCCCGACCTAGCATGTGGCCGGCGGCTGGGC  
AGCTTTTACGGTTCCTTCGCTCCCGACTTGTGGCCCGCCGCTGGGCCCTTCGGACCTTACTGCA  
CGTGGCTGGTGGACACGACGAGGCCGAGGCGCGTGTCTGCACTGGAGCTACGACTGGGTTATGATGA  
CTATGTCCAGGTGTATGAAGGCTGGGCGAGCGTGGGACCGTCTGCTGCAAACGCTTTCCTACCGCAGC  
AACCACCGGCCGCTGAGCCTGGAAGCAGCTCAGGGCCGCTCACTGTGGCTACCATGCTCGTGCTCGCA  
GTGCTGGTACGGCTTCAACGCCACATACCAGGTGAAGGGCTACTGCCTCCCGTGGGAGCAACCATGTGG  
GAGCAGCGAGGGAGATGACGACAGCACAGGGGAACAGGGGTGCTTCTCAGAGCCACAACGCTGTGATGGC  
TGGTGGCATTGTGCAAGCGGCCGAGATGAGCAGGGCTGTCCAGCGTGCCTCCGGACCAAGTATCCCTGTG  
AGGGTGGTAGTGGCCTGTGCTATGCACCTGCCGATCGTTGCAACAACAGAAAAGCTGCCCCGATGGCGC  
ACGTGGCGCTGTGACGGTCAAGGACTGCCAAGATGGCAGCGATGAGCATGGCTGCCTGGCTGCCGTC  
CCCGCAAGGTCATCACCGCCGCTCATTGGCAGCCTAGTATGCGGACTGCTGCTTGTATTGCCCTAGG  
CTGTGCCTTCAAACCTACTCCCTGCGCACGCAGGAGTACAGGGCCTTTGAGACCCAAATGACACGCTTA  
GAGGCAGAGTTTGTGCGCGCGAAGCCCCCATCCTACGGTCAGCTCATCGCACAGGGCCTCATCCAC  
CGGTTGAGGATTTTCTGTCTACAGTGCATCCCAGGCTTCAAGTGTACAGAACCTTCGCACAGCCATGCG  
ACGACAGATGCGTCGGCATGCCTCCCGCAGGGGCCATCTCGTGAAGACTGGGCCGCTCTGGAACAGG  
CTCTTCCACCGGCCACGGCACCTCGAGGCCAGATCCCACTGCTGACCGCCGCTCGTACCTCACAGACCG  
TGCTGGGTGATGGCTCCTCCAGGCAGCACCGGGCCTGTCCAGAGCCCCAGCACCCAATACAGACAC  
AGGCAGCCCTAGGGAGGCTGGAGATGGCCCTCCTAGTGGCTTGGCCATGCACCAGAAGTGGGGCCTTCA  
GTGCCACCCACCCCTTAAATCTGCGAGACCCAGAGTACAGGCCAGAGGACAAGGAGAGAAAAGCCCTGTG  
TGGAACCTCTGGAAGACAGCCAGCCCTGTGGACACGCTCCAGAGCCCTGCTTGGCACAAGACCCCA  
CCCTCAGACTCCCACTGCCAGTGGCACCAAGACCCCACTCAGCAGAGCCACTGGGGTCTGCAGGAGC  
CCTCCACCACCTGCTCCCAATATTGGAGGCTAGTGTATGAGGCCCTTCTGGTCTGC

ACGCGTACGCGGCCGCTCGAG - GFP Tag - GTTTAA

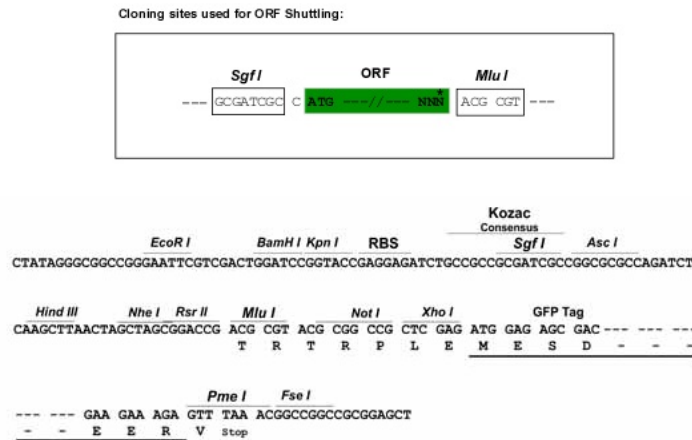
**Protein Sequence:** >MG215218 representing NM\_001024707  
 Red=Cloning site Green=Tags(s)

```
MEKRAAAGPEGAPGARAPLAVVCLVNLFLTGRLSSAVPALGKAGATWGFQAAATEPTGTQAACSGKLEQ
HTERRGVIYSPAWPLNYPPGTNCSWYIQGDRGDMITISFRNFDVEESHQCSLDWLLGPAAPPRQEAFRL
CGSAIPPAFISARDHVWIFFHSDASSGQAQGFRLSYIRGKLGQTSQCTDEFRCNKGKCLPGWQCNMVD
ECGDGSDGNCAPASEPPGSLCPGGTFPCSGARSTRCLPVERRCDDGTQDCGDGSDAAGCPDLACGRRLG
SFYGSFASPDLFGAARGPSDLHCTWLVDTPRRVLLQLLELRLGYDDYVQVYEGLGERGDRLLQTL SYRS
NHRPVSLEAAQGRLTVAYHARARSAGHGFNATYQVKGYCLPWEQPCGSSEGGDDSTGEQGCFCSEPQRCDG
WWHCASGRDEQGCACPDPQYPCGGSGLYAPADRCNNQKSCPDGADEKNCFSCQPGFHFCGTNLCFIE
TWRCDDQEDCQDGSDEHGCLAAVPRKVITAAIGSLVCGLLLVIALGCAFKLYSLRTQEYRAFETQMTRL
EAEFVRRREAPPSYQQLIAQGLIPPVEDFPVYASQASVLQNLRTAMRRQMRRHASRRGFSRRRLGRLWNR
LFHRPRAPRGQIPLLTAARTSQTVLGDGLLQAAPGPVPEPPAPNTDGTSPREAGDGGPSSGSHAPEVGPSS
VPPPLNLRDPEYRPEDKERKACVEPLEDSPAPVDTPEPCLAQDPHPQTPTASGTQDPHSAEPLGVCRS
PPPPCSPILEASDDEALLVC
```

TRTRPLE - GFP Tag - V

**Restriction Sites:** SgfI-MluI

**Cloning Scheme:**



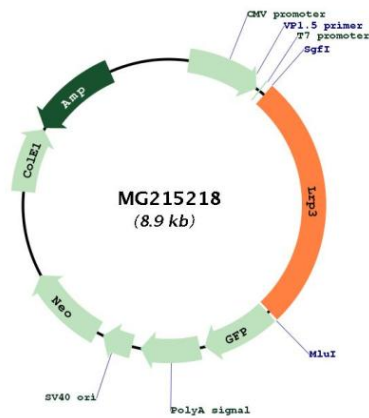
**ACCN:** NM\_001024707

**ORF Size:** 2370 bp

**OTI Disclaimer:** The molecular sequence of this clone aligns with the gene accession number as a point of reference only. However, individual transcript sequences of the same gene can differ through naturally occurring variations (e.g. polymorphisms), each with its own valid existence. This clone is substantially in agreement with the reference, but a complete review of all prevailing variants is recommended prior to use. [More info](#)

**OTI Annotation:** This clone was engineered to express the complete ORF with an expression tag. Expression varies depending on the nature of the gene.

<b>Components:</b>	The ORF clone is ion-exchange column purified and shipped in a 2D barcoded Matrix tube containing 10ug of transfection-ready, dried plasmid DNA (reconstitute with 100 ul of water).
<b>Reconstitution Method:</b>	<ol style="list-style-type: none"><li>1. Centrifuge at 5,000xg for 5min.</li><li>2. Carefully open the tube and add 100ul of sterile water to dissolve the DNA.</li><li>3. Close the tube and incubate for 10 minutes at room temperature.</li><li>4. Briefly vortex the tube and then do a quick spin (less than 5000xg) to concentrate the liquid at the bottom.</li><li>5. Store the suspended plasmid at -20°C. The DNA is stable for at least one year from date of shipping when stored at -20°C.</li></ol>
<b>Note:</b>	Plasmids are not sterile. For experiments where strict sterility is required, filtration with 0.22um filter is required.
<b>RefSeq:</b>	<a href="#">NM_001024707.2</a> , <a href="#">NP_001019878.1</a>
<b>RefSeq Size:</b>	3938 bp
<b>RefSeq ORF:</b>	2373 bp
<b>Locus ID:</b>	435965
<b>Cytogenetics:</b>	7 B2

**Product images:**

Circular map for MG215218