

Product datasheet for **MG215208**

Usp17lc (NM_010089) Mouse Tagged ORF Clone

Product data:

Product Type:	Expression Plasmids
Tag:	TurboGFP
Symbol:	Usp17lc
Synonyms:	Dub-2; Dub2; Dub2b; Usp17l5
Mammalian Cell Selection:	Neomycin
Vector:	pCMV6-AC-GFP (PS100010)
E. coli Selection:	Ampicillin (100 ug/mL)



[View online »](#)

ORF Nucleotide Sequence: >MG215208 representing NM_010089
 Red=Cloning site Blue=ORF Green=Tags(s)

TTTTGTAATACGACTACTATAGGGCGCCGGGAATTCGTGACTGGATCCGGTACCGAGGAGATCTGCC
 GCCGCGATCGCC

ATGGTGGTTTCTCTTCCCTCCAGAACAGATCCAGCCCTATCATCTCCTGGTGCCCAACAGCTGCATC
 AGGATGAAGCTCAGGTAGTGGTGGAGCTAACTGCCAATGACAAGCCAGTCTGAGTTGGGAATGTCCCA
 AGGACCAGGATGCGGGCTTCAGAACACAGGCAACAGCTGCTACCTGAATGCAGCCCTGCAGTGTGACA
 CACACACCACCTCTAGCTGACTACATGTGTCCAGGAGTACAGTCAAACCTGTTGTTCCCAAGAGGCT
 GTAAGATGTGTGCTATGGAAGCCCATGTAACCCAGAGTCTCCTGCACTCTCACTCGGGGATGTCATGAA
 GCCCTCCAGATTTGACCTCTGCCTCCACAAGCACCAGCAGGAAGATGCCCATGAGTTTCTCATGTTT
 ACCTTGAAAACAATGCATGAATCCTGCCTCAAGTGCACAGACAATCAGAACCCACCTCTGAGGACAGCT
 CACCCATTCATGACATATTTGGAGGCTTGTGGAGGTCTCAGATCAAGTGTCTCCATTGCCAGGTTACCTC
 AGATACATATGATCGTTCCTGGATGTCCCTGGATATCAGCTCAGCTCAGAGTGTAAATCAAGCCTTG
 TGGGATACAGAAAGTCAAGAGCTACGTGGAGAGAATGCCTACTACTGTGGTAGGTGTAGACAGAAGA
 TGCCAGCTTCCAAGACCTGCATATTCATAGTGCCCAAGGTAAGTACTCCTGCTAGTGTAAAGCGCTTCTC
 GGCTTCATGGGTAACAAGTTGGACAGAAAAGTAAAGTACCCAGAGTTCCTTGACCTGAAGCCATACCTG
 TCCAGCCTACTGGAGGACCTTGCCTTATGCCCTCTATGCTGTCTGGTCCATGAAGGTGCGACTTGTG
 ACAGTGGACATTACTTCTTATGTCAAAGCCAGACATGGGGCATGGTACAAGATGGATGATACTAAGGT
 CACCAGCTGCGATGTGACTTCTGTCTGAATGAGAATGCCTATGTGCTTCTATGTGCAGCAGACTGAC
 CTCAAACAGGTCAGTATTGACATGCCAGAGGCGCAGAGTACATGAGGTTCTCGACCTGAATACCAGCTGA
 AGAAATCCCGGAGAAAAAGCATAAGAAGAAAAGCCCTTGACAGAAAGTCCGGGAGAGCCCTGCAAAAA
 CAGGGAGAAAGAGCAACCAAGAAACCTCCTTAGGGGAGGGGAAAGTGTTCAGGAAAAGAACCAAG
 AAAGCTGGGCAGAAACATGAGAATACCAAACCTTGTGCCTCAGGAACAGAACCCAGAAACTTGGGCAGA
 AACACAGGATCAATGAAATCTTGCCTCAGGAACAGAACCCAGAAAGCTGGGCAGAGCCTCAGGAACAC
 GGAAGGTGAACCTGATCTGCCTGCTGATGCAATGTGATTACCTGCTCAGATCCACAGAAACTGGGC
 AGGGATGCTCCAGACAAGGAGAATCAACCTGGCACAATGCTGACAGGCTCCTCACCTCTCAGGACCTG
 TGAACACTGGGCAGCTCTGTAGACAGGAAGGAAGCAAGATCAAAGAAGGGGAAGAACAAGAACAAGCA
 AGGGCAGAGGCTTCTGCTTGTGTTG

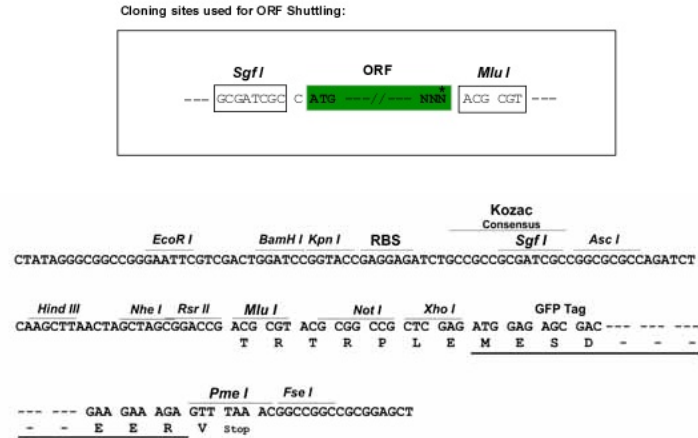
ACGCGTACGCGGCCGCTCGAG - GFP Tag - GTTTAA

Protein Sequence: >MG215208 representing NM_010089
 Red=Cloning site Green=Tags(s)

MVVSLSFPEADPALSSPGAQQLHQDEAQQVVVELTANDKPSLSWECPOGPGCGLQNTGNSCYLNAAQLCLT
 HTPPLADYMLSQEYSQTCCSPEGCKMCAMEAHVTQSLHSHSGDVMKPSQILTSFAFKHQEDAHEFLMF
 TLETMHESCLQVHRQSEPTSEDSSPIHDFGGLWRSQIKLHCQGTSDTYDRFLDVPLDISSAQSVNQAL
 WDTEKSEELRGENAYYCGRCRQKMPASKTLHIHSAPKVLVLLKRFSAFMGNKLDKRVSYPEFLDKPYL
 SQPTGGPLPYALYAVLVHEGATCHSGHYFSYVKARHGAWYKMDTKVTSADVTSVLNENAYVLFYVQQT
 LKQVSIIDMPEGRVHEVLDPYQLKKSRRKHKHKKSPCTEDAGEPCKNREKRATKETSLEGGKVLQEKNHK
 KAGQKHENTKLVPEQNHQKLQKHRINEILPQEQNHQKAGQSLRNTEGELDLPADAIIVIHLLRSTENWG
 RDAPDKENQVWHNADRLLTSDPVTGQLCRQEGRRRSKKGKKNKQGRLLLV

TRTRPLE - GFP Tag - V

Restriction Sites: SgfI-MluI

Cloning Scheme:


- ACCN:** NM_010089
- ORF Size:** 1635 bp
- OTI Disclaimer:** The molecular sequence of this clone aligns with the gene accession number as a point of reference only. However, individual transcript sequences of the same gene can differ through naturally occurring variations (e.g. polymorphisms), each with its own valid existence. This clone is substantially in agreement with the reference, but a complete review of all prevailing variants is recommended prior to use. [More info](#)
- OTI Annotation:** This clone was engineered to express the complete ORF with an expression tag. Expression varies depending on the nature of the gene.
- Components:** The ORF clone is ion-exchange column purified and shipped in a 2D barcoded Matrix tube containing 10ug of transfection-ready, dried plasmid DNA (reconstitute with 100 ul of water).
- Reconstitution Method:**
1. Centrifuge at 5,000xg for 5min.
 2. Carefully open the tube and add 100ul of sterile water to dissolve the DNA.
 3. Close the tube and incubate for 10 minutes at room temperature.
 4. Briefly vortex the tube and then do a quick spin (less than 5000xg) to concentrate the liquid at the bottom.
 5. Store the suspended plasmid at -20°C. The DNA is stable for at least one year from date of shipping when stored at -20°C.
- Note:** Plasmids are not sterile. For experiments where strict sterility is required, filtration with 0.22um filter is required.
- RefSeq:** [NM_010089.3](#), [NP_034219.3](#)
- RefSeq Size:** 1697 bp

RefSeq ORF: 1638 bp

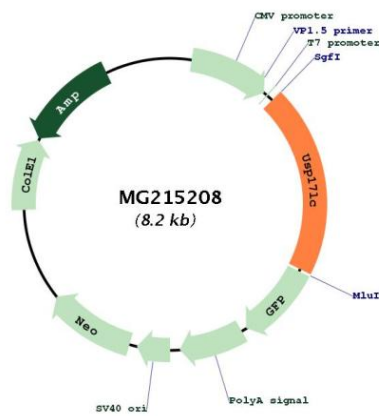
Locus ID: 13532

UniProt ID: [G5E8I7](#)

Cytogenetics: 7 54.85 cM

Gene Summary: Deubiquitinating enzyme that removes conjugated ubiquitin from specific proteins to regulate different cellular processes (PubMed:8995226, PubMed:11443643). Important for preimplantation stage embryonic development (PubMed:22984479). [UniProtKB/Swiss-Prot Function]

Product images:



Circular map for MG215208