

## Product datasheet for **MG215206**

### Gzmk (NM\_008196) Mouse Tagged ORF Clone

#### Product data:

Product Type:	Expression Plasmids
Product Name:	Gzmk (NM_008196) Mouse Tagged ORF Clone
Tag:	TurboGFP
Symbol:	Gzmk
Mammalian Cell Selection:	Neomycin
Vector:	pCMV6-AC-GFP (PS100010)
E. coli Selection:	Ampicillin (100 ug/mL)
ORF Nucleotide Sequence:	>MG215206 representing NM_008196 Red=Cloning site Blue=ORF Green=Tags(s)

TTTTGTAATACGACTCACTATAGGGCGGCCGGAATTCGTCGACTGGATCCGGTACCGAGGAGATCTGCC  
GCC**CGATCGCC**

ATGAGGTTTTCTTCATGGGCTCTGGTTCCCTGGTGGCTGGCGTTTATATGTCTTCAGAGTGTTCATA  
CTGAAATTATTGGAGGGAGGGAAGTCCAGCCGATTCCAGGCCATTTATGGCGTCCATCCAGTACCGCAG  
CAAGCATATTTGTGGAGGAGTCTGATCCACCCACAGTGGGTGCTAACAGCCGCCACTGCTACTCTTGG  
TTTCCCAGAGGCCACTCTCCACCGTGGTTTTAGGAGCACATTCTTTTCCAAGAATGAGCCCATGAAGC  
AGACATTTGAAATTA AAAAGTTTCACTCCCATCTCACGACTTCAGTCCGGTCCGCATCGCATGACATCAT  
GCTGATAAAGCTTCGCACTGCTGCAGAACTAAACAAGAATGTCCAACCTGCTTACCTGGGATCCAAAAAC  
TATCTTAGAGATGGGACCAAATGCCAGGTGACTGGCTGGGGAACCAAGCCAGATCTGTTAACCGCCT  
CTGATACCCTGAGAGAAGTCACTGTTACCATCATAAGTAGAAAACGCTGTAAACAGCCAAAGCTACTACAA  
CCACAAACCTGTTATAACCAAGGACATGATATGTGCAGGAGATGCCAGAGGTCAAAGGATTCTGCAAG  
GGTACTCTGGTGGCCCTTTGATCTGCAAAGGCATCTTCCATGCCCTAGTCTCTCAGGGCTATAAATGTG  
GCATCGCCAAAAAGCCTGGAATCTATACGCTATTAACCTAAGAAATACCAGACCTGGATCAAAGCAAGCT  
TGCCCCATCACGTGCACAT

**ACGCGT**ACGCGGCCGCTCGAG - GFP Tag - GTTTAA



[View online »](#)

**Protein Sequence:** >MG215206 representing NM\_008196  
Red=Cloning site Green=Tags(s)

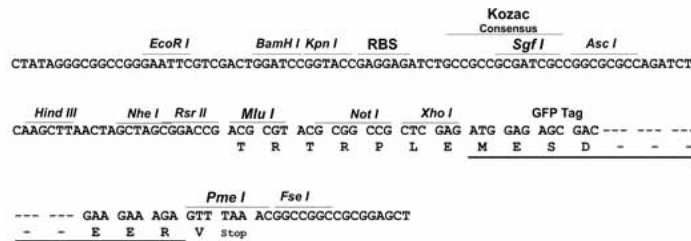
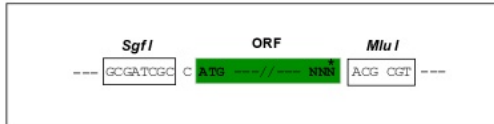
MRFSSWALVSLVAGVYMSSECFHTEIIGGREVQPHSRPFMASIQYRSKHICGGVL IHPQWVLTAAHCYSW  
 FPRGHSPTVVLGAHLSKNEPMKQTFEIKKFIPF SRLQSGSASHDIMLIKLR TAAELNKNVQLLHLGSKN  
 YLRDGTKCQVTGWGTTKPDLLTASDTLREVTVTIISRKR CNSQSYYNHKPVITKDMICAGDARGQKDSCK  
 GDSGGPLICKGIFHALVSQGYKCGIAKKPGIYTL LTKKYQTWIKSKLAP SRAH

TRTRPLE - GFP Tag - V

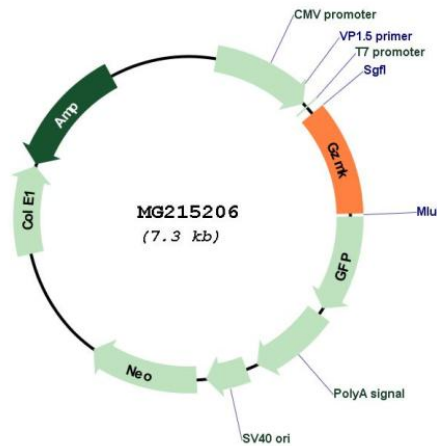
**Restriction Sites:** SgfI-MluI

**Cloning Scheme:**

Cloning sites used for ORF Shuttling:



**Plasmid Map:**



**ACCN:** NM\_008196

**ORF Size:** 789 bp

<b>OTI Disclaimer:</b>	The molecular sequence of this clone aligns with the gene accession number as a point of reference only. However, individual transcript sequences of the same gene can differ through naturally occurring variations (e.g. polymorphisms), each with its own valid existence. This clone is substantially in agreement with the reference, but a complete review of all prevailing variants is recommended prior to use. <a href="#">More info</a>
<b>OTI Annotation:</b>	This clone was engineered to express the complete ORF with an expression tag. Expression varies depending on the nature of the gene.
<b>Components:</b>	The ORF clone is ion-exchange column purified and shipped in a 2D barcoded Matrix tube containing 10ug of transfection-ready, dried plasmid DNA (reconstitute with 100 ul of water).
<b>Reconstitution Method:</b>	<ol style="list-style-type: none"><li>1. Centrifuge at 5,000xg for 5min.</li><li>2. Carefully open the tube and add 100ul of sterile water to dissolve the DNA.</li><li>3. Close the tube and incubate for 10 minutes at room temperature.</li><li>4. Briefly vortex the tube and then do a quick spin (less than 5000xg) to concentrate the liquid at the bottom.</li><li>5. Store the suspended plasmid at -20°C. The DNA is stable for at least one year from date of shipping when stored at -20°C.</li></ol>
<b>RefSeq:</b>	<a href="#">NM_008196.2</a>
<b>RefSeq Size:</b>	792 bp
<b>RefSeq ORF:</b>	792 bp
<b>Locus ID:</b>	14945
<b>UniProt ID:</b>	<a href="#">O35205</a>
<b>Cytogenetics:</b>	13 D2.2