

## Product datasheet for **MG215204**

### Zfp352 (NM\_153102) Mouse Tagged ORF Clone

#### Product data:

<b>Product Type:</b>	Expression Plasmids
<b>Tag:</b>	TurboGFP
<b>Symbol:</b>	Zfp352
<b>Synonyms:</b>	2czf48
<b>Mammalian Cell Selection:</b>	Neomycin
<b>Vector:</b>	pCMV6-AC-GFP (PS100010)
<b>E. coli Selection:</b>	Ampicillin (100 ug/mL)



[View online »](#)

**ORF Nucleotide Sequence:** >MG215204 representing NM\_153102  
 Red=Cloning site Blue=ORF Green=Tags(s)

TTTTGTAATACGACTACTATAGGGCGCCGGGAATTCGTGACTGGATCCGGTACCGAGGAGATCTGCC  
 GCCGCGATCGCC

ATGGAGATGGCAGAAAAACAGGTGCTTCCAGCCAGGACCCTGCAATACACAGCCTTCCCCTGTGGAGT  
 CCAGCCAGCTTTTCTCAGGTACAGCTCAGAGATGCTTACCTGGAACAAACAGTGATGGAATCTGCATC  
 CTGTAGCACACAGGAGACAACCTGTACTCAGAACTCAACAGCATACCCAGGAAAAGCCATTGGTTTCCAT  
 TTTGGACAGCCATTTGAGAACACTTCTTGAACACAGCAAGTTGTGTCTGCTGAGCAGAAAAATATCTCCTG  
 CAGGTCTTTACCATACACAGCTCAACAGCGCCCTCAGATATGCCCTTCTCCCAGAACAAACAAGAGT  
 TGACACCAGGGAGACTTTCTACAATGAAGACTACTGGATGAGGACACTGAACCTGACAAGACTCTCTTG  
 ACCCAAAATACAGCCATGTGTGAGAATCAGAGGTTACCTTTGATAATCATCAAATGCTCTCTATGGAA  
 GCCATGCTGCCAGGACCCAAATGTGGTCACGCCTTGTCTTGAACATGACTGGACCTCTACAACAG  
 TCATATGACAACCAGGAATGGAGGCATCTGACTCTCTATGAGAGTCAGATGACAGCACCCAGTTGTAGC  
 CAGACCCTTCATCCAATCAAATCATAACATCCTTTTCTGAACAGAATTTTTGAGGATCAGCAGAGTA  
 ACCTAGCAGTTAATAATGGATTCTATGGAAATCAGGTGATATTGCCAAATGGATACCAGGCTTTCTATGA  
 GCCTCAGATGAGAGCTAACTTTGACCAACAAATGACCAAAATGAAATCCTTCAGTGGTCAGAATGTCTGC  
 AAAGGTCAGGAGAATCTCCTCAGTGGTGTGCTCCCTCTCTGGTTATCAGACATCAGGCTACAGATGTG  
 ACCAGGATTTGATTGTGAATCCTCAGGTGACAAGTCCAATTGGTGGCCAGCCTCTCTCTGACTTTTCAGAC  
 ACAAACTCAAGTTTTGATACAGCTTCTCCTGGGTCTAAGAGGACAAGACCCAGTGCAGAAGACAACCTG  
 GCTTGCCTTTGGAGACAAGTCCCACATCTGAAGAACTCTACTTGGGTGAGATGAGGACCTCTGTTG  
 ATCAAATTTCTACTCAAGTCAGAATGGAACACCTAATATTAAGAAAGCCTTGATCCTCAGGTGACTTC  
 ATTTAGTTTGAAGCTCCATATGTGGGTGAATCCTCATACCCTTATGTTCCCTTTGATTCAAAAACAA  
 CCTCAGAAAACTCTTCGGCTTCCAGTTTAGTCCAGAGACAGCATCCAGAGATGAAGTTAGACTTCAAGA  
 CCCAGAGCCCTGTGTCACAGAAGGACCCATAGTCTTTGAAGCTCTACTTTGTACTTATAAGGGTTGTAC  
 GAAATTTTACAAAAGAGCTTACCACCTCAAGAACCAGAAACACACTGATAAGAGGAAAATACGGG  
 TGTGATGAGCCTGGGTGCACATGGTCTTTTCCGCCTATGTGATCTCAACAGACACAAAAGAAAGCACCA  
 ATGGTGTAGAGGTTCTACGCTTGTCCCTTGTGCTCTACAACTATTCCAGACTGCTTTATCTCAAAAAGCA  
 TCTGGAGAAGAAACATGCTCAAGCACAAACCACCACTGCAACC

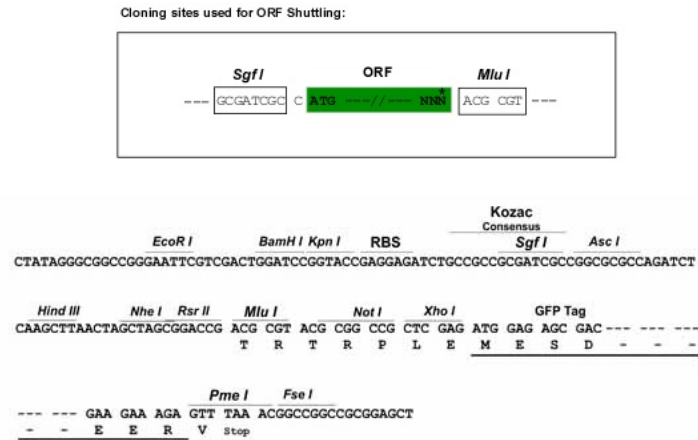
ACGCGTACGCGCCGCTCGAG - GFP Tag - GTTTAA

**Protein Sequence:** >MG215204 representing NM\_153102  
 Red=Cloning site Green=Tags(s)

MEMAENTGASQPGPCNTQPSPVESSQLFSGQSSEMLTWKQTVMESASCSTQETTCTQNSTAYPGKAI GFH  
 FGQPFENTSWNQVVSAAEQKISPAGLYHTQLNSAPQICLPPQKTRRVDRETFFYNEDYWMRTLNSDKTLL  
 TQNTAMCENQRVTFDNHQIALYGHAGQDPNVGHAFASEHDWTSYNSHMTTRNGGHLTLYESQMTAPSCS  
 QTLHPNQIITSFSEQNYFEDQQSNLAVNNGFYGNQVILPNGYQAFYEPQMRANFDQTNQDMKFSGQNV  
 KGQENLLSGECSLSGYQTSYRCDQDLIVNPQVTSPIGGQPLSDFQTQSSFDALPGSKRTRPSAEDNL  
 ACPLETSPTSEETLYLGMRTSVDQNFYSSQNGTPNIKESLDPQVTSFSLQAPYVGESSYPSCSPLIQKQ  
 PQKNSASSLVQRQHPMKLDFKTQSPVSQKDPSPKLKLYFCTYKGCCTKFKYKRAYHLKEHQKHTDKRKYG  
 CDEPGTWSFFRLCDLNRHKEKHNGERFYACPLCSTNYSRLLYLKHKHLEKKHAQAQPTTAT

TRTRPLE - GFP Tag - V

**Restriction Sites:** SgfI-MluI

**Cloning Scheme:**


**ACCN:** NM\_153102

**ORF Size:** 1653 bp

**OTI Disclaimer:** The molecular sequence of this clone aligns with the gene accession number as a point of reference only. However, individual transcript sequences of the same gene can differ through naturally occurring variations (e.g. polymorphisms), each with its own valid existence. This clone is substantially in agreement with the reference, but a complete review of all prevailing variants is recommended prior to use. [More info](#)

**OTI Annotation:** This clone was engineered to express the complete ORF with an expression tag. Expression varies depending on the nature of the gene.

**Components:** The ORF clone is ion-exchange column purified and shipped in a 2D barcoded Matrix tube containing 10ug of transfection-ready, dried plasmid DNA (reconstitute with 100 ul of water).

**Reconstitution Method:**

1. Centrifuge at 5,000xg for 5min.
2. Carefully open the tube and add 100ul of sterile water to dissolve the DNA.
3. Close the tube and incubate for 10 minutes at room temperature.
4. Briefly vortex the tube and then do a quick spin (less than 5000xg) to concentrate the liquid at the bottom.
5. Store the suspended plasmid at -20°C. The DNA is stable for at least one year from date of shipping when stored at -20°C.

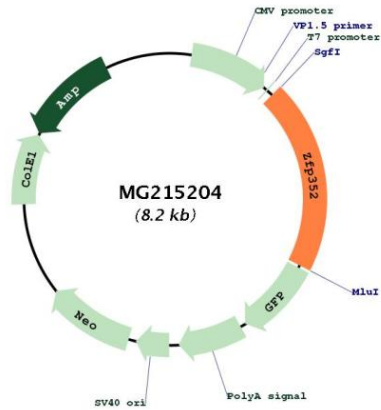
**Note:** Plasmids are not sterile. For experiments where strict sterility is required, filtration with 0.22um filter is required.

**RefSeq:** [NM\\_153102.3](#), [NP\\_694742.2](#)

**RefSeq Size:** 2261 bp

RefSeq ORF: 1656 bp  
 Locus ID: 236537  
 Cytogenetics: 4 C5

**Product images:**



Circular map for MG215204