

## Product datasheet for **MG215197**

### **Zbed5 (NM\_183088) Mouse Tagged ORF Clone**

#### **Product data:**

<b>Product Type:</b>	Expression Plasmids
<b>Tag:</b>	TurboGFP
<b>Symbol:</b>	Zbed5
<b>Synonyms:</b>	2410018M08Rik; Scand3
<b>Mammalian Cell Selection:</b>	Neomycin
<b>Vector:</b>	pCMV6-AC-GFP (PS100010)
<b>E. coli Selection:</b>	Ampicillin (100 ug/mL)



[View online »](#)

ORF Nucleotide Sequence: >MG215197 representing NM\_183088  
Red=Cloning site Blue=ORF Green=Tags(s)

TTTTGTAATACGACTCACTATAGGGCGCCGGGAATTCGTGCGACTGGATCCGGTACCGAGGAGATCTGCC  
GCCGCGATCGCC

ATGCCACGTGGAAGCCGAATCCGCACTTCCCGCTGACCCTTCTGGCCGGCCGGCCCTCAGATGAGGG  
CTGCTCCCCGAAGACACCTGCAGCTCAGCCTCCAGCAGCAGCTGCGCCATCTGCAGTTGGCTCACCTGC  
CGCTGCGCCCCGGCAGCCAGGCTGATGGCCAGATGGCTACCACCGCGCCGGTGTGGCTGTGGGCTCT  
GCAGTGGGACACACCTGGGTCAAGCCATCACTGGGGCTTCAAGCGAGGTGGCAGTGTGAGCCGCAA  
AGCCCCGACATCACTTACCAGGAGCCTCAGGGAGCCAGCTGCAGAACAGCAGTCTTTTGGACCTTGCTC  
TCTAGAGATCAAGCAGTTTCTGGAGTGTGCTCAGAACCAGAGCGATGTCAAGCTCTGTGAGGGCTTCAAC  
GAGGTGCTGCGGCAGTGCAGGATTGCAAAATGTGGACCATCCAGGCCAGTGGATCATGGAGAGAGGAACG  
TTAAGAGAAGAAAATAATGAGGGTTTTTTCAGTATGGTTTTACCTCAACCATCACAGTAGGAATTGA  
GAGACCACAGTGTGTCATTTGGGGTGGTCTGTGCGCGGAGTCGATGAAACCCAAACAACTGAAACGC  
CATTTTGGAGAGCAAGCATTCCAGCTTCGCCGGCAAGGATACCAACTATTTTCAGAAGCAAAGCTGATGGAC  
TCAAGAAAGCCAGACCTGATACTGGCAGCAAGTCCAACAAACAGAAGCTGGCAGCCGTGAAACTTCTTA  
TTTGGTGGCCCTCAGAATTGCCAGAGATATGAAACCGCACACCTTTCAGAGCAGTACTGTTCCCGGTG  
GCCAAGGACAGGGTTCGCGTCATGATCGGAGACGAATTTGTACAAAACAGTGCAGTCTCCTTATCTA  
ACGACACTGTCCGAAGAAGAATACATGACATGTCTGCTGATATTCTTGATCAGGTGGTCCAGGAAATTA  
ATCTGCTCCACTTCCAATATGCAGCATCCAGCTCGATGAATCGACAGACGTTGCAAACCTGTTTACAGTTA  
ATGGTTTACGTGAGGTATATTAATGATGGTACTTTAAAGATGAGTTTCTTTGCTGCAAACCTTTGAA  
GGACAGCTACTGCCCTTGATGATTTGAGGCAGTCGACTCGTTTCTGAGACAGCATGAGATCTCTTGAA  
AAGCATCTGTGGAGTTTGCACAGACGGTGCACAGCTACGCTGGGCTGTCAATCTGGGTTTTCAGCCCTG  
GTCCTAAATGAGTCCCCAAAAGCCATTGGAGCTCATTGTATGCTTCATCTGCAAACATTAGCAATGAAGA  
CGCTGCCCCAAGACTTCCAGGAAGTAATGAAAAGTGTCTGAGTCTGTCAATTCGTAAGGCGAGTTC  
TTTGAACAGTCGACTGTTTCTGCAGCTCTGCAGTGATTTAGATGAGCCAAGCAAACCTGCTACTTTCAT  
ACTGAAGGGAGATGGCTGTCAAGAGGAAAAGTTCTAAAACGTATCTTTGAGCTCCGTGACGAACTCAAAA  
TGTTTTTTAAACAAAAGCAATACGGCAGTTCGAAGCACTTTTTCAGTGATAACAGTGCATTGCAGAAGGT  
AGCTTATTTGGTCGATATCTTTACCATTTTGAATGAGTTGAATTTACTGCAAGGACCAAATTC AAC  
TGCTGATCTGTCTGAAAAGATCCACTCATTCCAAATGAAACTTCAACTCTGGCAAAAAAATTGGATG  
AAAATAAATTTTACATGTTGCCTACCTTATCCGCCTTCTTTGAGGAACATGACATTGAACAGCACAAAAG  
GATTACAGTGGTATTTCCGTGAAAGAACAATGGACATGCTTGAAGTGAATTTCTCTGGTACTTTCCA  
AATCTACCCGAGATTCGGTTTGCACCTCGCCAGGAGCCGTTCTCAGTCAAAGCTGAAGATGTTCCCGAGA  
CTGCGCAAGAAGATTTACCAGACTTACCAACAGCGACGCGCGAGAGCTGATTTCTCCACAATGCCAGT  
CACACAGTTCTGGTCAAGTGTTCAGTCATACCCAGTTCTGTGAGAGATGGTGTTCGCGCTCCTCCTT  
CCTTTTCCAACAACATATCTGTGTGAAACAGGTTCTCAAGTTTGTAGTTATCAAGTCTAAATACAGAA  
GTAGACTTGTGGTGAAGATGATCTTCGCTGTGCTCTTGAAGACCACCCGAGAATTTCTGATCTGTT  
GAGAAAGAAGCAGTCTCAACCTTCGCAC

ACGCGTACGCGGCCGCTCGAG - GFP Tag - GTTTAA

**Protein Sequence:** >MG215197 representing NM\_183088  
Red=Cloning site Green=Tags(s)

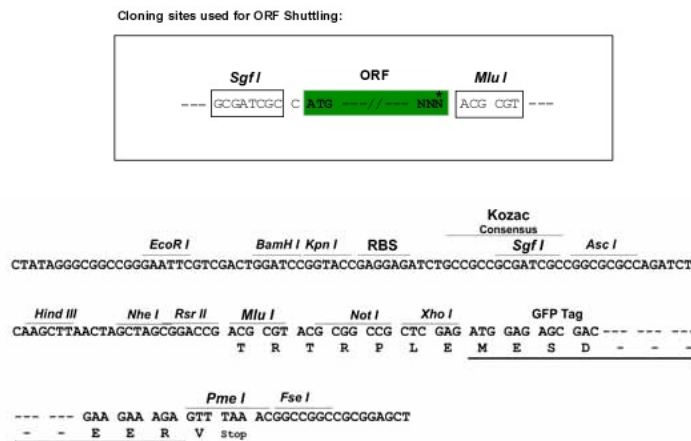
```

MPRGSRI RTSRVTL LAGRAPQMRAAPRRAPAAQPPAAAAPS AVGSPAAA PRQPLMAQMATTAAAGVAVGS
AVGHTLGHAI TGGFSGGSAEPAKPDITYQEPQGAQLQNQQSF GPCSL EIKQFLECAQNQSDVKLCEGFN
EVL RQCRIANVDHPRPVDHGERNVKRRKYNEGFLQYGF TSTITVGIERPQCVCIGVVL SAESMKPNLKR
HFESKHSSFAGKDTNYFRSKADGLKARPDTGSKSNKQNVAAVETS YLVALRIARDMKPHTFAEHL LFPV
AKDRVRVMIGDEFVTKLSAVSLNDTVRRRIHMSADILDQVVQEIKSAPLPICSIQLDESTDVANCLQL
MYVYRYINDGDFKDEF LCKPLERTATALDVFEAVDSFLRQHEISWKSICGVCTDGAPATLGCQSGFQRL
VLNESPKAIGAHCMLHLQTLAMKTL PQDFQVMKSVLSSVNFVKASSLNSRFLQLCSDLDEPSKTL LLLH
TEGRWL SRGKVLKRIFELRDELKMFNFQKAI RQFEALFSDNSALQKVAYLV DIFITILNELNLSLQGPNST
CLDLSEKIHSFQMKLQLWQKLDENKFYMLPTLSAFFEEHDIEQHKRITVVISVKEHLDMLASEISWYFP
NLPEIPFALARSPFSVKAEDVPETAQEDFTRLTNSDAARADFSTMPVTQFWVKCLQSYPV LSEMVLRLLL
PFPTTYLCETGFSSLLVIKSKYRSRLVVEDDLRCALAKTTPRISDLVRKKQSQPSH
    
```

TRTRPLE - GFP Tag - V

**Restriction Sites:** SgfI-MluI

**Cloning Scheme:**



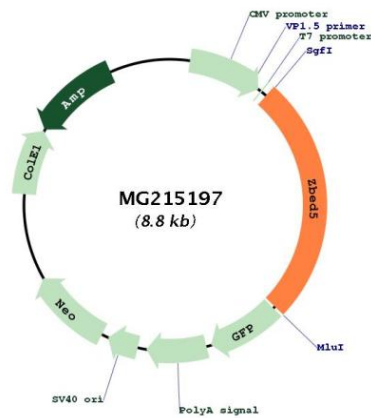
**ACCN:** NM\_183088

**ORF Size:** 2268 bp

**OTI Disclaimer:** The molecular sequence of this clone aligns with the gene accession number as a point of reference only. However, individual transcript sequences of the same gene can differ through naturally occurring variations (e.g. polymorphisms), each with its own valid existence. This clone is substantially in agreement with the reference, but a complete review of all prevailing variants is recommended prior to use. [More info](#)

**OTI Annotation:** This clone was engineered to express the complete ORF with an expression tag. Expression varies depending on the nature of the gene.

<b>Components:</b>	The ORF clone is ion-exchange column purified and shipped in a 2D barcoded Matrix tube containing 10ug of transfection-ready, dried plasmid DNA (reconstitute with 100 ul of water).
<b>Reconstitution Method:</b>	<ol style="list-style-type: none"><li>1. Centrifuge at 5,000xg for 5min.</li><li>2. Carefully open the tube and add 100ul of sterile water to dissolve the DNA.</li><li>3. Close the tube and incubate for 10 minutes at room temperature.</li><li>4. Briefly vortex the tube and then do a quick spin (less than 5000xg) to concentrate the liquid at the bottom.</li><li>5. Store the suspended plasmid at -20°C. The DNA is stable for at least one year from date of shipping when stored at -20°C.</li></ol>
<b>Note:</b>	Plasmids are not sterile. For experiments where strict sterility is required, filtration with 0.22um filter is required.
<b>RefSeq:</b>	<u>NM_183088.2, NP_898911.2</u>
<b>RefSeq Size:</b>	2492 bp
<b>RefSeq ORF:</b>	2271 bp
<b>Locus ID:</b>	71970
<b>Cytogenetics:</b>	5 G1.3

**Product images:**

Circular map for MG215197