

## Product datasheet for **MG215186**

### **Tmem259 (NM\_001003949) Mouse Tagged ORF Clone**

#### **Product data:**

Product Type:	Expression Plasmids
Product Name:	Tmem259 (NM_001003949) Mouse Tagged ORF Clone
Tag:	TurboGFP
Symbol:	Tmem259
Synonyms:	AC087114.7gm2; mFLJ00277; ORF61; R32184_3
Mammalian Cell Selection:	Neomycin
Vector:	pCMV6-AC-GFP (PS100010)
E. coli Selection:	Ampicillin (100 ug/mL)



[View online »](#)

**ORF Nucleotide Sequence:**

>MG215186 representing NM\_001003949  
 Red=Cloning site Blue=ORF Green=Tags(s)

TTTTGTAATACGACTCACTATAGGGCGGCCGGGAATTCGTCGACTGGATCCGGTACCGAGGAGATCTGCC  
 GCC**GCGATCGCC**

ATGTCGGAGCACGCGGCAGCCCCAGGGCCCGGCCAACGGCGGGGGTGGTGGCGCGGCCCGGTGC  
 GCGGCCCTCGCGGCCCAATCTCAACCCCAACCGCTCATCAACGTGCGGACCGGCTCTTCCACGCTCT  
 CTTCTTCAAGATGGCCGTCACCTACTCACGCTCTTCCACCTGCTTTCGCGCCCTCTTTGAATTCTTC  
 GTTCTGCTCAAGGCCCTGTTGTGCTTTTCGCTCTCGCTACATAACATCGTCTTCTCCCGGTCCCCA  
 TCAACTGCTTAGAGCATGTTGAGATCGATGGCCGCGGGAGGTGTCTGCGGGTGGAGGTGCGCCACAA  
 CTCGAGCCGGGCACCGGTGATCTGCAGTTCTGTGATGGGGCCCTCGGTGGCTGGAGCTGGAACCCGGG  
 GGCCTGGAGCTGGAGGAGGAGCTCACAGTGGAGATGTTACCAACAGCTCCATCAAGTTTGAGCTGG  
 ACATTGAGCCCAAGGTGTTCAAGCCACAGAGCGGTGCAGATGCCCTGAACGACAGCCAGGACTTCCCTTT  
 TCCTGAGACGCCAGAAAAGTGTGGCCACAGGATGAGTACATTGTGGAGTACTACTGGAATATGGCTTC  
 CTGCGGCTATCCCAAGCCACACGCCAGCGTCTGAGCATTCTGTGATGGTGGTACCCCTAGACCCACGC  
 GGGACCACTGCTTTGGGACCGCTTCAGCCGCCTATTGCTGGATGAGTTCCTGGGCTATGATGACATCCT  
 CATGTCCAGTGTAAAGGGTCTGGCAGAGAACGAGGAGAACAAAGGCTTCTTGAGGAATGTGGTCTCTGGG  
 GAGCACTACCGCTTTGTGAGCATGTGGATGGCGGCACATCCTACCTGGCGGCCTTTGTGATCATGGTCA  
 TCTTTACCCTCAGCGTGTCCATGCTGTTGCGATACTCGCACCACCAGATCTTCTGCTTTCATCGTGGACCT  
 GCTGCAGATGCTGGAGATGAACATGGCCATCGCCTTCCCCGACGCGCCTTGCTGACCGTATCCTGGCT  
 CTCGTGGGATGGAAGCCATCATGTCTGAGTCTTCAATGATACCACCACGCGCTTCTACATCATCCTCA  
 GTGTGGCTGGCCGACCATGATGCCATCTGCTGCCACCAACACCAGCAAGCGGCATGGCTGAG  
 GTTCTTCTACCTTACCCTTCCGCTTCTATGCCTACCCTACCCTTTAACGGGAGTACAGCAGCCTG  
 GCCCTGGTCACTCCTGGCTCTTATCCAGCATTCCATGATCTACTTCTTCCACCCTATGAGTTGCCCG  
 CCATCCTGCAGCAGATCCGAATCCAGGAGATGCTGCTTCCAGACGCCACCCTGGGCCCGGGACCCCCAC  
 GGCGCTGCCTGACGACCTCAACAACAACCTGGCTCCCCTGCCACTCCGGATCCCAGCCCTCCCCTCGCG  
 CTGGGCCCCAGCTCCAGCCCGCGCCACTGGCGGGCATCTGGGCTGGCTCACTGGGCGCTGGGGCT  
 CAGTATCCGGCAGTGACCTAGGTTGGGTGGCCGAGACCGCCCATCATCTGACGCATCCTTCTGTGTC  
 GGGGCTGAGCGCCTCTCTCTGGAGCGGGCCAAACAGCCCTAGTACCCCGACAGCTCACGACCTGAC  
 CCTGGGTCCTCTGGAGACGCACCCGCCCTGCCGGTCC

**ACGCGTACGCGGCCGCTCGAG** - GFP Tag - GTTTAA

**Protein Sequence:**

>MG215186 representing NM\_001003949  
 Red=Cloning site Green=Tags(s)

MSEHAAAPGPGPNGGGGGAAPVRGPRGNLNPINVRDRLFHALFFKMAVTYSRLFPPAFRRLEFF  
 VLLKALFVLFVLAYIHIVFSRSPINCLEHVRDRWPREGVLRVEVRHNSRAPVILQFCDGGLGGLLEPG  
 GLELEEEELTVEMFTNSSIKFELDIEPKVFKPQSGADALNDSQDFPFPEPAKVWPQDEYIVEYSLEYGF  
 LRLSQATRQRLSIPVMVTLDPTRDQCFGDRFSRLLLLDEFLLGYDDILMSSVKGLAENEENKGFRLNVVSG  
 EHYRFVSMWMARTSYLAAFVIMVIFTLVSMMLRYSHHQIFVFIVDLLQMLEMNMAIAFPAAPLLTVILA  
 LVGMEAIMSEFFNDTTAFYIILTVWLADQYDAICCHTNTSKRHWRFFLYYHFAFYAYHYRFNGQYSSL  
 ALVTSWLFIQHSMIYFFHHYELPAILQQIRIQEMLLQTPPLGPGTPTALPDDLNNNSGSPATPDPSPLA  
 LGPSSSPAPTGGASGPGSLGAGASVSGSDLGWAETAIIISDASFLSGLSASLLERRPTAPSTPDSSRPD  
 PGVPLEDAPAPAGS

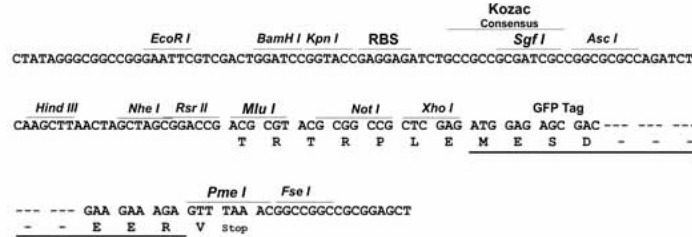
**TRTRPLE** - GFP Tag - V

**Restriction Sites:**

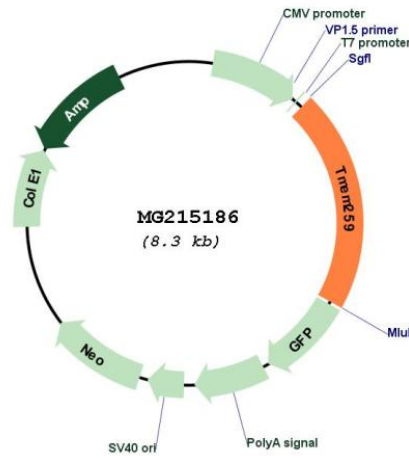
Sgfl-MluI

**Cloning Scheme:**

Cloning sites used for ORF Shutting:



**Plasmid Map:**



ACCN: NM\_001003949  
 ORF Size: 1722 bp

<b>OTI Disclaimer:</b>	The molecular sequence of this clone aligns with the gene accession number as a point of reference only. However, individual transcript sequences of the same gene can differ through naturally occurring variations (e.g. polymorphisms), each with its own valid existence. This clone is substantially in agreement with the reference, but a complete review of all prevailing variants is recommended prior to use. <a href="#">More info</a>
<b>OTI Annotation:</b>	This clone was engineered to express the complete ORF with an expression tag. Expression varies depending on the nature of the gene.
<b>Components:</b>	The ORF clone is ion-exchange column purified and shipped in a 2D barcoded Matrix tube containing 10ug of transfection-ready, dried plasmid DNA (reconstitute with 100 ul of water).
<b>Reconstitution Method:</b>	<ol style="list-style-type: none"><li>1. Centrifuge at 5,000xg for 5min.</li><li>2. Carefully open the tube and add 100ul of sterile water to dissolve the DNA.</li><li>3. Close the tube and incubate for 10 minutes at room temperature.</li><li>4. Briefly vortex the tube and then do a quick spin (less than 5000xg) to concentrate the liquid at the bottom.</li><li>5. Store the suspended plasmid at -20°C. The DNA is stable for at least one year from date of shipping when stored at -20°C.</li></ol>
<b>RefSeq:</b>	<a href="#">NM_001003949.4</a>
<b>RefSeq Size:</b>	2223 bp
<b>RefSeq ORF:</b>	1725 bp
<b>Locus ID:</b>	216157
<b>UniProt ID:</b>	<a href="#">Q8CIV2</a>
<b>Cytogenetics:</b>	10 C1
<b>Gene Summary:</b>	May have a role in the ERAD pathway required for clearance of misfolded proteins in the endoplasmic reticulum (ER). Promotes survival of motor neurons, probably by protecting against ER stress.[UniProtKB/Swiss-Prot Function]