

Product datasheet for **MG215169**

Erich6 (NM_001081262) Mouse Tagged ORF Clone

Product data:

Product Type:	Expression Plasmids
Tag:	TurboGFP
Symbol:	Erich6
Synonyms:	4932431H17Rik; Fam194a
Mammalian Cell Selection:	Neomycin
Vector:	pCMV6-AC-GFP (PS100010)
E. coli Selection:	Ampicillin (100 ug/mL)



[View online »](#)

ORF Nucleotide Sequence: >MG215169 representing NM_001081262
 Red=Cloning site Blue=ORF Green=Tags(s)

TTTTGTAATACGACTACTATAGGGCGCCGGGAATTCGTGCGACTGGATCCGGTACCGAGGAGATCTGCC
 GCC**CGGATCGCC**

ATGCGCCCGCTCAGGGAGTGCAGGAGCCTGGAAGAGGAACAAAGTCAAAAAGCCAGATAAAGCCT
 CGAAGGGAAAAGAGATGGTAGAGGCAGAGAAAGCGCAGAAGATGCAGAGAGAGCAGGGGGAGGAGTTGGA
 GCAGGAGGGACAGGAGGAGGAGGTGGAGGAAGAGGAAAAGGAGGAGGAGGCCAAGGAGGAGCAGGGAGCT
 CAGGAGGAGCAGGAGGGCAGGAGGCTCAGGGGGTCAAGGGTGGGATGATAGGGAGGGCCAGCCGACAGG
 AAAGCCAGAACCTGTTCCCTGAGTCGTTGAACGAAGAAGACATCGGAAAGCCATAGGCCCCAGTGAAG
 CTTTGACGAAGACTCACCGGAATTTCTGCCCGCTTAATTAGCGTGGTCAGCCCAGCCTGAGCACTATG
 TCCCGCCAGCAAGGTGTCCAGCCCTCGTGGGGCAAGAGGAGCCGCTGCCGCTGCCGCACAGGGAGG
 GCTCTCCTCTGCTCCAGCAGCGGCTCGTCCCAAAAAGCTATCCCAAAATATTTCAAACATTTAAAAA
 GGACTGTCTGAAGTACTGTAGATAGAGACATGTATCCAAGTTTGTATGAAAAGTTCAGATGTCAGTA
 CAAACAGAAGATGAAAGTTGGCTTCAACGAATTTCTGCTAAAAAGCAGATAAAAAGAATACCATCTATTG
 AGATAACGGAAACTGCCACAACTCAAGCTTCTATGTTAAGAGAAAATTGGGTAATTAATCCTGAAGA
 GCCAAGCTAAGCATTTATGTGAGATGGAGTTAATGAAGACTTTGTAATTTGTTGAAACTTCTCTA
 AGGACGTTACCCAGCGTTGGGCCACCGCCATTCTGTCTTTAGGAAAGAGTACTCGTATATGGATGTGA
 ACTTTAAGGATGAACAAGAGCTGGAACCCACGTGTAATTTTGTGGAAGTGATCTACGGTCATTGTTTTT
 TAAGATGGACACTTCTCTGAAAACATTCAAACCAAACCAAAATCATATAGGTGCTGCTGCTTTCAGTTT
 CAAAATCTTCTTGATTATCAACGAGGAAATGCTAACCATCAAACCCCTGCGCTGGAGTTAATCAGCA
 TCTCACCTCATGCAGCGTATGGCAGTGACATTGACAGGCTCAAGGCAAAGGAGAAGGCTCTGCAGAAAAA
 ACAAGAGCGTCAGATGGCCAGACATTTTGGGATAATATCACATGATCAGAGCCCACAACAACTGATGAT
 GGTAAGACTTTTGTACGGATGCCCTGGAATTCAGAAAACATACTCTCAGAATTCATACCCAGAGAG
 AAGCTGGTAACATTTTGAATACAGCTTCCCTTGTCTGCCTTCCCATCTTGGCTTAACTTTACCTGTGA
 ACAGTCTGTGTACGGATCTCATTACACCGAGATGCGATGTTCAAGTACTTTGGTTTGTATGCTAGT
 GTGGATGGCACGATTCTCTTGACCTATCCGTCTGGAAACCTAGCCATTATCCGATTGCCCAACAAGCAG
 ATGGTTTTATTTGTATAATCCAAGAAGACACGCCCAACCCCTACTATCTGGCACTGTTTACTCCTC
 CGGCAGAAGCTCCTGCTATCACCCCAATGGAAATGTCTGGGTATACATCAACATACTGGGAGGCCAGTAC
 TCAGATCAAGCCGGCAACAGGATACGAACCTGGAAGTCAAGTACCATGCCCTTCTCATCTTTGTCT
 CATTTAAACCTGTCTTTTGGCTTTGAACCGTTACATTGGAATTCGCATCCTAGAACAAAGACAAGGTCTC
 CATTAATTTCTAGCTATGGGCCAACAGGCAACAATCAGCCTTGAACCAAAAGTAATGCTCCATGATCCA
 GAGGAGGTTCCAGCCCTGTGTTTCTGAGTGGAGACGACCTTCTGCTGTGGCCAACTTAATAAAGATCC
 GGCGATTGTTCAATAAGCTGGAAGGATGCATGAATTTCCCATAAAGTCAAGGCTTGGGAAAAGTTAAAGCA
 ACCTCCCTACCTTTCTTCACTCTCTAAAACACTTGCCTCTGCCATAATTCTGGCATACAGCAAAAA
 ACAATGGAACAATTATAGATCTAATAAAAAGAGAGGAG

ACGCGTACGCGGCCGCTCGAG - GFP Tag - GTTTAA

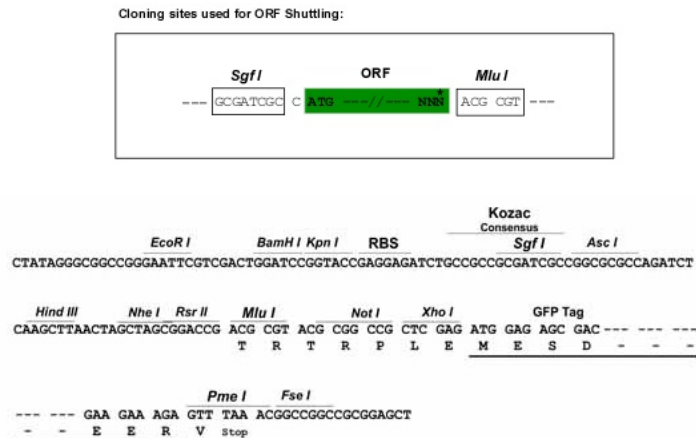
Protein Sequence: >MG215169 representing NM_001081262
 Red=Cloning site Green=Tags(s)

MRPRQGVVRKPGKRNTKSKKPKDKASKGKEMVEAEKAQKMQRREQEELQEQQEEVEEEEEKEEEAKEEQGA
 QEEQEQGGAQGVQGWDDREGQPQESQNLFPESLNEEDIWKAIGPSEGFDEDSPEFRPRLISVVSPSLSTM
 SPPSKVSSPSWGEEELPLPHREGSPASSGSSSHKSYPKIFQTFKKDLSEVTVDVDRMYPVSLYERVMQSV
 QTEDESWLQRI SAKKQIKRIPSEIETETLPQTQASMLRENWVINPEEPKLSILCEMEFNEDFVNLFETSL
 RTLPSVGPAILSFRKEYSYMDVNFKDEQELEPTCEFCGSDLRSLFFKMDTSSSENIQTKPKSYRCCCLQF
 QNLDDYINEEMLTIKPPALELISISPHAAYGSDIDRLKAKEKALQKKQERQMARHFAIISHDQSPPTTDD
 GKTFVTDALIEIQKYSQNSITQREAGNILKYSFPFSAFWSLNFCEQSVCTDLIHEMRCSSVYFGFDAS
 VDGITLLTYPGSLAIIRLPNKTDGFCIIEQEDTPTNPTILALFDSSGRSSCYHPNGNVVWYINILGGQY
 SDQAGNRIRTNWNSSTMPSSSFVSKPVFLALNRYIGIRILEQDKVSINFLAMGQQTATISLGTKVMLHDP
 EEVPALWFLSGDDL LLLANLIKIRRLFNKLEGMNFPISQAWKELKQPPYLSLKL LALCHNSGIQQK
 TMETIIDLIKEEE

TRTRPLE - GFP Tag - V

Restriction Sites: SgfI-MluI

Cloning Scheme:



ACCN: NM_001081262

ORF Size: 2139 bp

OTI Disclaimer: The molecular sequence of this clone aligns with the gene accession number as a point of reference only. However, individual transcript sequences of the same gene can differ through naturally occurring variations (e.g. polymorphisms), each with its own valid existence. This clone is substantially in agreement with the reference, but a complete review of all prevailing variants is recommended prior to use. [More info](#)

OTI Annotation: This clone was engineered to express the complete ORF with an expression tag. Expression varies depending on the nature of the gene.

Components: The ORF clone is ion-exchange column purified and shipped in a 2D barcoded Matrix tube containing 10ug of transfection-ready, dried plasmid DNA (reconstitute with 100 ul of water).

Reconstitution Method:

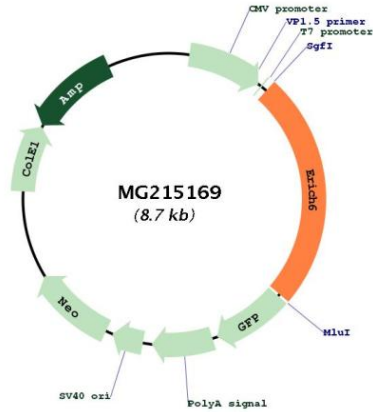
1. Centrifuge at 5,000xg for 5min.
2. Carefully open the tube and add 100ul of sterile water to dissolve the DNA.
3. Close the tube and incubate for 10 minutes at room temperature.
4. Briefly vortex the tube and then do a quick spin (less than 5000xg) to concentrate the liquid at the bottom.
5. Store the suspended plasmid at -20°C. The DNA is stable for at least one year from date of shipping when stored at -20°C.

Note: Plasmids are not sterile. For experiments where strict sterility is required, filtration with 0.22um filter is required.

RefSeq: [NM_001081262.1](#), [NP_001074731.1](#)

RefSeq Size: 2195 bp
 RefSeq ORF: 2142 bp
 Locus ID: 545527
 UniProt ID: [D3Z6S9](#)
 Cytogenetics: 3 D

Product images:



Circular map for MG215169