

Product datasheet for **MG215150**

Nlrp2 (NM_177690) Mouse Tagged ORF Clone

Product data:

Product Type:	Expression Plasmids
Tag:	TurboGFP
Symbol:	Nlrp2
Synonyms:	E330007A02Rik; Nalp2; NBS1; PAN1; PYPAF2
Mammalian Cell Selection:	Neomycin
Vector:	pCMV6-AC-GFP (PS100010)
E. coli Selection:	Ampicillin (100 ug/mL)



ORF Nucleotide Sequence: >MG215150 representing NM_177690
Red=Cloning site Blue=ORF Green=Tags(s)

TTTTGTAATACGACTACTATAGGGCGCCGGGAATTCGTGCGACTGGATCCGGTACCGAGGAGATCTGCC
GCCGCGATCGCC

ATGGAACATTTTGATCCCTGGGTTTCAACCTAAAAGACGTCCTGAGAAAGCTGGACAAGACTGAGTTGA
ACAATTTCAAGAGAACATTGAGGAGCTGTTCTCTGCCAGATACAATGAAACAGATCAACAAGCTGACAAT
GGACCTGGCTAATGGAGCTCAGCTAGCAGAAAATCTCACAGACCACTGCCCCAGTGCTGGATAAAGAGA
GTCACCGTCCAGATCTTAGAGGAAAATAACCGTGTAGATCTAGCTGAGTTAGTAGTAAAGCAAATCGAAG
AAGCAGTATTAAGGTACCTGAGGAAAAGGTTTCTTCTAAACCAAGAGAAACCTCGGGGACACTAACTTT
CCCATGGAATTTTGTTCAGGAGCTAAAAGGCCAGAGGACAAGCAAAAAGAGGAATGGAAGACTAGATAC
ACAGCTAAAAGGAGCAGAACTTCTGGCCTAAAATGCAATAAAGAAATCTATGTGGTTACCGAGAGCTACA
AGACTCTGGCATTGTGAACCCAAAGATAGAAACCCATTTGCTCATGCAATTTGTGCTGCATGGCCC
TCCAGGCTCTGGGAAAACCACAATGGCAAAGCAGCTAATGTTAGAATGGTCAGAGAGTAAGCAGGCCAG
ATTTTCTCATGTGCTTCTACATCAGCTGCAGGAAAGTAAATAACTAAACCTTGCACTTTGCCACC
TCCTCTCCATGGACAATCCCTCTGGAGGGACTGTGTATTGAGATCTAATCTGGGAAAGGAATTCCT
ATTTGTGGTAGATGGTTTTGATGAGCTGACATCCCAGCAGGAGCTCTGATCCGTGACCTTTGTGGTGAC
TGGAACACAGTGAAGCCTGTAGAGGCTTACTGGGCAGTTTGTGGAAGGAAGATGGCACCTCATGCCA
CCCTGCTGGTAACCACACGGACACAGTCTTTGCACCAATCTTTGTCATGATGGATCAGCCACTACTAGT
AGAAACTCTGGGCTTCTTGAGCAAGAAAAGCAGGAGTACTTTAGAAAATCTTTGAAGATGAGGAGGGT
GAGGAGGAGGATAAAGGTGAGGAAAAGGCACCTTAGAGCTCTCAAGGAAGTGAAGTGAATGCTGATCTAT
ACCAATGGCCTCACTTCTACTGCATGTGGGATATTCTGCCTCTGTCTGGAGCTAAGGATGAAGAAGGG
GGAAGACCTGTCTGACATGTGACACATACACCTCTATGTTCTGAACTTCTGTGCGAAGTCTTCTCA
TCAGAAACCTGTGAGGACCATCTCAATGAGGAATTCAAAATCTTATTCAAGAAAATATGTATCCTGGCTG
CCAATAGTCTCTTGAACAGGTGCCAATCTGTGAAGAAGACTTCTTGACATTAATAAATGAACCTAAA
CAATTTGCATCCCATGGTGTGCAGGCACATCCTCTTAAAGGACAGTCCAGTACACACTGTCTCTCTTT
ATCTGCCTCGGTATCCAGCAACTCCTGGCTGCAATAATATTTGTTCAAGGAGCTTGGACAGGAAAGCAAG
GTGCTCTAAATATAGTATACAGAACATGCTTTCAAGGGAAGCAAGATTAATAAACCTGACCTGTCTGG
GCTGCTGCCATTTGATTTGGCCTCCTGAATGAGACTCGTATTCAAGAGTTGAAGACTACTTTTGGCTGC
CAAATACAAGTGAAGTCAAGAGAAAATCCTGGAGTGTGAGTCAGGGGAAAAATAAACCTTACTATTAC
TGATGAATATGCAAGAAATCTTGTCTGTCTCTATGAATCTCAGGAGGAGGGGTTTGTGAAGGAAGCCAT
GGTCTCTTTGAGGACATCTCCTTGCATTTGAAAACAGCACTGACCTCATTATGCTTCTTCTGCCTC
AAGAACTCTCAGAACTTGACAGCAATGTCCCTGAAAGTAGAAAAGGCGGTCTTCCAGAGAAATGTTGCTG
CACTAGAGTCCACAGCTAAGCATCAAAGTCCCGGATGAACAACGCATGTTAACTTTCTGGACAGACTT
TTGTGACACATTTAATTCAAAATAAGAAAAGTGGTATTTCTAGACATCCATGAAAGCTTCTCAACAGCTCT
GCACTGGAGATTCTTTGTGAAAAGCTGCCCTCTGCTTCTGTTGTCTCCAGAAAGTGGTCTCAAAAATA
TTTCCCAGATGATGCCTACGAGAAATTTGCCTCATTTTTAATGGTTATAAAAACCATCTCACATCTGAT
CCTGCAAGGTGGCAACCTGGACAGCATGCATCACTCACTGTGTGAGGTTCTGAAAAATCCAGCTGCAAC
CTGAAGTTTCTCAGCCTGGGATCTTGTCTACTGCTGCTCAGAAAATGGGATGACTTCTTCCAGTCTGA
AAGTCAATCAATCCCTGATATTTCTGGATCTCACAGACAACAGTCTCTTGGACAAAAGTGCTAAGCTCCT
ATGTAATATTTGGAAGGAACCAAGTGCATACTGCAGAGGGTATCGTTGGAGAACTGTGAGTCACTGAA
GCCTGCTGCAAGGACCTCTCTCCGTTTGTGGTCAAGGAACTCTGACACACCTCAGCTGGCCAACA
ATAAACTTGGGGATAACGGAGTGAACAACTGTGTGAAAGCATAAGCTGACGGAGTGAATCTACAGAC
CCTGGTGTGTGGTCTGTAACATACCAACGCTGGTTGCCACTATCTCTCAAAGATGCTCAAACAAACA
CTGAGCCTGAAACACTTGGATCTGGGGCTAAATCGCATCGAAACCAAGGAGCAAAAGTTTCTGTGTGAGG
CTTTGAAGAACCCCAAGAGTAAATGAAAAGTCTGTGGCTGTGTGGATGCTCCATCACTCCACTGAACTG
CCAAGACTTCTGAGACTCTTAGAAGCAACAAGACCTGAACACTCTAGACCTGTCTCAGAACGTCCTG
GAACTGATGCCATAAAGACATTTCTGTGAAGCCTTGAACCTCAGATTTGCCCCCTGCAAATGCTTAGAT
TGAAATTTGATGAAGCTAAACCTAGTATCCAGAACCTGATCCAAGAGATGAAGGTGAGCCATCCACAAC
GAGAATCAGCAGTGACCAAGTGGATCTTAAGAATCCTCCTCTTCTCATTTCATTTTT

ACGCGTACGCGGCCGCTCGAG - GFP Tag - GTTTAA

Protein Sequence:

>MG215150 representing NM_177690

Red=Cloning site Green=Tags(s)

MEHFDPLGFNLKDVLRKLDKTELNFKRTLRSCLPDTMKQINKLTMDLANGAQLAEILTDHCPASAWIKR
 VTVQILEEINRVDLAELVVKQIEEAVLKVPPEEKVSSKPREPSGTLTFPWNFVQAKRPEDKQKEEWKTRY
 TAKWKQNFWPCKNKEIYVVTESYKTLALCNPKIETPFAHAIVLHGPPGSGKTTMAKQLMLESSEKQAQ
 IFSCAFYISCREVNNTKPTFAHLLSMDNPSWRDCVIRDILGKEFLFVVDGFDLTFPAGALIRDLCGD
 WNTVKPVEVLLGSLKRRKMAPHATLLVTRTQSLHQIFVMMDQPLLVELGFLQEQEQEYFQKYFEDEEG
 EEEDKGEKALRALKEVRCNADLYQMASLPTACGIFCLCLELRMKKGEDLSLTCQTYTSMFLNFLCEVFS
 SETCEDHLEEFQILFKKICILAANSLLEQVPIICEEDFLTKLNLNHLHPMVCRHILFKDSSSTHCLSF
 ICLGIQQLAAIIFVQELGQESKGVSKYSIQNMLSREARLKNPDLGSLLPFVFGLLNETRIQELKTTFGC
 QISTEVKRFLECESGENKPLLLLMMQEIILSCLYESQEEGFVKEAMVLFEDISLHLKSTDLIHASFCL
 KNSQNLQTMSLKVEKAVFPENVAALESTAKHQRSPEQRMFTFWTDFCDTFNSNKKLVFLDIHESFLNSS
 ALEILCEKLPASCCQLQKVVLNKISPDDAYEKLCIFNGYKTI SHLILQGGNLDMMHSLCEVLKNPACN
 LKFLSLGSCSTAAQKWDDFFPVLKVNQSLIFLDLTDNSLLDKSAKLLCNIWKEPKCILQRVSLENCQLTE
 ACCKDLSSVLMVSRTLTHLSLANNKLGDNVKNLCESISCTECNLQTLVWSCNITNAGCHYL SKMLKQT
 LSLKHLDLGLNRIGTKGAKFLCEALKNPKSKLWLCGCSITPLNCQDFSETLRSNKSLNTLDLSQNVL
 GTDAIKTFCEALKQICPLQMLRLKFDEAKPSIQNLIQEMKVSHPQLRISSDQVLDKNPPLPHFIF

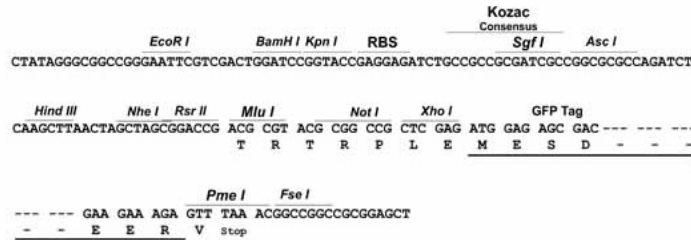
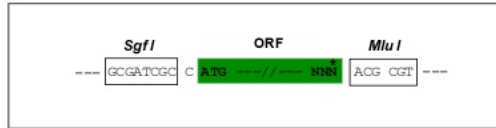
TRTRPLE - GFP Tag - V

Restriction Sites:

Sgfl-MluI

Cloning Scheme:

Cloning sites used for ORF Shutting:



ACCN:

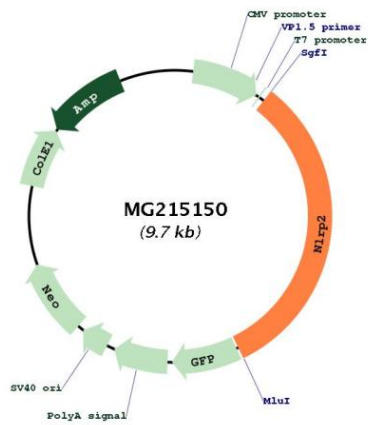
NM_177690

ORF Size:

3138 bp

OTI Disclaimer:	The molecular sequence of this clone aligns with the gene accession number as a point of reference only. However, individual transcript sequences of the same gene can differ through naturally occurring variations (e.g. polymorphisms), each with its own valid existence. This clone is substantially in agreement with the reference, but a complete review of all prevailing variants is recommended prior to use. More info
OTI Annotation:	This clone was engineered to express the complete ORF with an expression tag. Expression varies depending on the nature of the gene.
Components:	The ORF clone is ion-exchange column purified and shipped in a 2D barcoded Matrix tube containing 10ug of transfection-ready, dried plasmid DNA (reconstitute with 100 ul of water).
Reconstitution Method:	<ol style="list-style-type: none">1. Centrifuge at 5,000xg for 5min.2. Carefully open the tube and add 100ul of sterile water to dissolve the DNA.3. Close the tube and incubate for 10 minutes at room temperature.4. Briefly vortex the tube and then do a quick spin (less than 5000xg) to concentrate the liquid at the bottom.5. Store the suspended plasmid at -20°C. The DNA is stable for at least one year from date of shipping when stored at -20°C.
Note:	Plasmids are not sterile. For experiments where strict sterility is required, filtration with 0.22um filter is required.
RefSeq:	NM_177690.3 , NP_808358.2
RefSeq Size:	3404 bp
RefSeq ORF:	3141 bp
Locus ID:	232827
Cytogenetics:	7 A1

Product images:



Circular map for MG215150