

Product datasheet for **MG215145**

Spg20 (NM_001144988) Mouse Tagged ORF Clone

Product data:

Product Type:	Expression Plasmids
Tag:	TurboGFP
Symbol:	Spg20
Synonyms:	A1840044; C79168; mKIAA0610; SPARTIN; TAHCCP1
Mammalian Cell Selection:	Neomycin
Vector:	pCMV6-AC-GFP (PS100010)
E. coli Selection:	Ampicillin (100 ug/mL)



ORF Nucleotide Sequence: >MG215145 representing NM_001144988
 Red=Cloning site Blue=ORF Green=Tags(s)

TTTTGTAATACGACTCACTATAGGGCGCCGGGAATTCGTGCGACTGGATCCGGTACCGAGGAGATCTGCC
 GCCGCGATCGCC

ATGGAGAGAGAACCAGAAAATGGAGAACCTGCTGAAATTAAGATCATCAAGGAAGCATAACGAGAAGGCCT
 TTATGTTTGTAAATAAAGGACTGAACACGGACGAGTTAGGGCAGAAGGAAGAAGCAAAGAACTATTACAA
 GCAAGGAATAGGACACCTGCTTAGGGGCATCAGCATCGCGGCTGCAGAGCCGGGGCACACAGGCCCTGCC
 TGGGAGGCTGCCAGGCAGATGCAACAGAAAATGAAGGAAACGCTTCAGAACGTCGCCACCCAGGCTAGAGA
 TCCTGGAGAAGGGCCTTGCCACTTCTACGGAATGACCTTCAGGATGTGCCAAGCTATACCCAGAGTT
 CCCGCCATAAGACGCGTGCAAGAAAGTCCCCAGAGCAGGAGTCCGTTAGTACAGCGCCCGAGCGTGTGAA
 GTCGATGGGAGCGCCTCAGCCGCTGTGCCGGCCCAAGTGGTGCGCCTTCTGCTCTGCCCGTACCATCGC
 CCAGCTGCCCTGCCAAGCGCCACCAGCCTACAGCCCACAGGCTGCTGAGGGCCACTACACTGTTTCCTA
 TGGAACAGATTCGGGGAGTTTTCATCCGTGGGAGAAGACTTCTACAGGAACCGTTCAGCCGCCCCCT
 CTTGAGACCTTGGGGCTCGATGCAGATGAGTTGATCTTGATACCAAACGGAGTGCAGATCTTTTTGTAA
 ACCCTGCGGGAGAGGTCAGTGCTCCCTCGTACCCTGGGTATCTGCGGATCGTGCGGTTCTTGGAATAATC
 TCTGGATACAGTTCTGAACCGCCCTCTGGGTTTCTCCAGGTGTGTGACTGGTTATACCCTCTAGTTCCT
 GATAGGTACCAGTCTGAAGTGCAGTGTGGGAGCCTACATGTTCCAGATACCATGTTACAAGCTGCTG
 GGTGCTTCGTAGGGTTTCTTTCATCTGAGTCCCAAGAGTACAGAGAGCTGTTTGAGGATCTGTT
 GAGACAGATGTCTGACCTTCGGCTCCAGACCAAAGATTCAAGTGAAGAAGTAACTGAGCCAGATTGTG
 CCCTGTGAGCCGAGTTCAGAAGAAAATCGAAAGAATTGCCTGAATGGAGCGAGAAAGTGGCCACAACA
 TCCTGTGAGGTGCTTCTGGGTGAGCTGGGTTTAGTCAAAGGTGCTGAATTTACTGGCAAAGCAATTCA
 GAAAGGTGCTTCTAAACTCAGAGAGCGCATTACAGCCGAGGAAAAGCCAGTGGAGGTGAGCCAGCTGTC
 ACCAGGGTCTCTACATAGCGAAGCAGGCAACCGGAGGAGCAGCCAAAGTCAGCCAGCTCCTGGTTGACG
 GCGTCTGCACAGTAGCGAATTTGTTGGTAAAGAACTTGTCTCCACACGTCAGAAGCACGGAAGCAAAC
 TGGTCCGGAATCCCTGAAGAGGGACAAGACGGGAAATCTGCCCTGGATGGCCCATGGTCGTGGCAGCG
 AGTAGTGTTCAAGGATTCTCAACTGTCTGGCAAGGTTGGAATGTGCAGCTAAATGCATCGTTAACAACG
 TGTCTGCAGAACTGTACAGACTGTGAGATACAAGTATGGGCACAACGCAGGAGAAGCTACACATAACGC
 AGTGGATTCAGCTATCAATGTTGGGCTCACTGCCTACAATATTGACAACATCGGCATCAAAGCCATGGT
 AAGAAAAGTCCAAGCAGACGGGACACACTCTCCTCGAGGACTACCAGATCGTTGAGCGCCTCAGAGGG
 AGAGTCAGGGAGGACCAAGCACAGAAGGGAGAAGAGACATAGGAAAAGCAGGTGGAGGAAGAGAGCC
 AGGGGCAGGAAAGAAGGACAAA

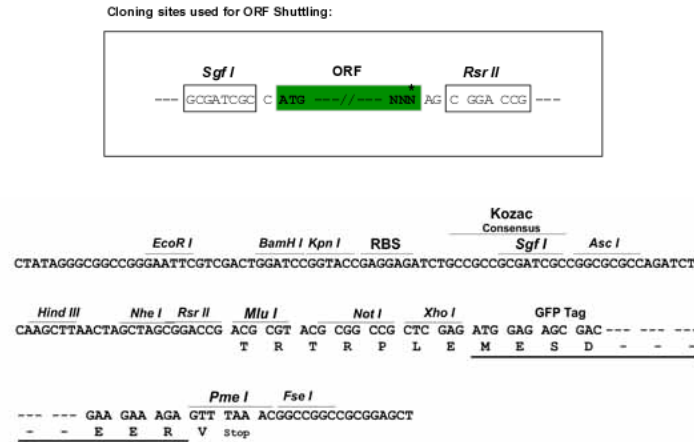
AGCGGACCGACGCGTACGCGGCCGCTCGAG - GFP Tag - GTTTAA

Protein Sequence: >MG215145 representing NM_001144988
 Red=Cloning site Green=Tags(s)

MEREPENGEPAEIKIIEAYEKAFMFVNKGLNDELGQKEEAKNYKQIGHLLRGISIAAAEPGHTGPA
 WEAARQMQQMKETLQNVTRLEILEKGLATSLRNDLQDVPKLYPEFPPKDACKKSPEQESVSTAPQRAE
 VDGSASAACAGPSGAPALPVPSPSCPAEAPPAYSPQAAEGHYTVSYGTDSEFSSVGEDFYRNRSQPPP
 LETLGLDADELILIPNGVQIFFVNPAGEVSAPSYPGYLRIVRFLDNLDTVLNRPPGFQVCDWL YPLVP
 DRSPVLKCTVGAYMFPDMLQAAGCFVGVLSSELPEDDRELFEDLLRQMSDLRLQTKDSSEEVNLSQIV
 PCEPSSSEKSKELPEWSEKVAHNILSGASWVSWGLVKGAFTGKAIQKGASKLRERIQPEEKPEVSPAV
 TRGLYIAKQATGGAAKVSQLLDVGCVTVANCVGKELAPHVKKHGSKLVPESLKRDKDGKSDGAMVVA
 SSVQGFSTVWQGLECAAKCIVNNSAETVQTVRYKYGHNAGEATHNAVDSAINVGLTAYNIDNIGIKAMY
 KKTAKQTGHLLLEDYQIVERPQRESQGGATSTEGRRDIGKQVEEEKPGAGKKDK

SGPTRRRLE - GFP Tag - V

Restriction Sites: SgfI-RsrII

Cloning Scheme:


ACCN: NM_001144988

ORF Size: 1842 bp

OTI Disclaimer: The molecular sequence of this clone aligns with the gene accession number as a point of reference only. However, individual transcript sequences of the same gene can differ through naturally occurring variations (e.g. polymorphisms), each with its own valid existence. This clone is substantially in agreement with the reference, but a complete review of all prevailing variants is recommended prior to use. [More info](#)

OTI Annotation: This clone was engineered to express the complete ORF with an expression tag. Expression varies depending on the nature of the gene.

Components: The ORF clone is ion-exchange column purified and shipped in a 2D barcoded Matrix tube containing 10ug of transfection-ready, dried plasmid DNA (reconstitute with 100 ul of water).

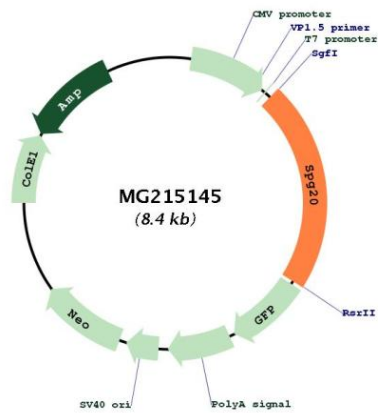
- Reconstitution Method:**
1. Centrifuge at 5,000xg for 5min.
 2. Carefully open the tube and add 100ul of sterile water to dissolve the DNA.
 3. Close the tube and incubate for 10 minutes at room temperature.
 4. Briefly vortex the tube and then do a quick spin (less than 5000xg) to concentrate the liquid at the bottom.
 5. Store the suspended plasmid at -20°C. The DNA is stable for at least one year from date of shipping when stored at -20°C.

Note: Plasmids are not sterile. For experiments where strict sterility is required, filtration with 0.22um filter is required.

RefSeq: [NM_001144988.1](#), [NP_001138460.1](#)

RefSeq Size:	3626 bp
RefSeq ORF:	1845 bp
Locus ID:	229285
UniProt ID:	Q8RIX6
Cytogenetics:	3 C
Gene Summary:	May be implicated in endosomal trafficking, or microtubule dynamics, or both. Participates in cytokinesis.[UniProtKB/Swiss-Prot Function]

Product images:



Circular map for MG215145