

Product datasheet for **MG215135**

Abi3bp (NM_001014422) Mouse Tagged ORF Clone

Product data:

| | |
|---------------------------|--|
| Product Type: | Expression Plasmids |
| Product Name: | Abi3bp (NM_001014422) Mouse Tagged ORF Clone |
| Tag: | TurboGFP |
| Symbol: | Abi3bp |
| Synonyms: | 5033411B22Rik; AI506287; BG172926; D930038M13Rik; eratin; TARSH |
| Mammalian Cell Selection: | Neomycin |
| Vector: | pCMV6-AC-GFP (PS100010) |
| E. coli Selection: | Ampicillin (100 ug/mL) |
| ORF Nucleotide Sequence: | >MG215135 representing NM_001014422 Red=Cloning site Blue=ORF Green=Tags(s) |

TTTTGTAATACGACTCACTATAGGGCGGCCGGAATTCGTCGACTGGATCCGGTACCGAGGAGATCTGCC
GCC**CGATCGCC**

ATGCTCTCCAGCCTGGGGTGTCTACTTCTCTGTGGAAGTATTGCCTTGCTCTGGGAAATGCACAGAAAT
TGCCAAAAGGTAAAAAGCCAAGCTTGAAGTGCACATCAATACCACCAGCGACTCCATCTTGAAGTT
CCTGCGTCCAAATGCAAACGTAAGCTGGAAGTTTTCTCCTGGGATATGGCAGCAATGTGTCTCCAAAC
CAGTACTTCCCTTCCACAGAAGGGAAATTCACAGAGGCTGTAGTTGATGCAGAGCCGAAGTATCTGA
TAGTCGTACGACCTGCTCCTCCTCCAGCCAGAAGAAGTCATGTTTCAGGGAAATCTCGCCCTCGCAAACC
CCTCCAGCTGGTGGTGGGTACGTTGACACCGAGTTCTGTCTTCTGCTCCTGGGGATTCTCATCAACCCA
CACCATGACTGGACATTGCCAAGCCACTGTCCAGTGACAGATTTTATACAATTCGATATAGAGAAAAAG
ATAAAGAAAAGAAATGGATTTTTCAACTCTGCCAGCTACTGAAACAATTGTGGAATCTAAAGCCCAA
CACAGTTTATGAATTTGGTGTGAAAGACAATATAGAAGGTGGAATTTGGAGTAAGATTTCAATCATAAG
ACTATTGTTGGAAGTAAAAACAAAGTAAACGGGAAAAATCCAAAGCACTTATGACCAGGTCCACTCAGTGC
CAGTCCCGAGGAAGCTAATCCCACTAACGATCATTAAAGCAAGTATTGAGTATGTTACTCACAGGGCTTC
AACCAAATCCCCAGACAAGACTCCTTTTGGGGGAACAATATTAGTTCATCTGATTATCCGGGTCTTAAT
GAATCCACTGAAAACCTCCACATCCATAATGCTTGGATTTCCGATGCTCTCAAGGCACAATTAGCTA
AGAATGAAACATTGGCTTTACCAGCAGAATCTAAAACACCAGAGGTCGAAAAATTGGCAGGGCAGCCAGT
AACAGTGAATCCGGAATCAGTTTCAAGAAGCACTAAGCCACCCTGTCTAGTGCTTTAGACTGACAGAG
ACAGCACTGGTCTCAGTGAGAAGACGTGAGAAACAGCCCGCTCTGTTCTAATACCTGAGTTGAATTGC
CCTTGAGCACTTTAGCTCCAAAAGGTTCCAGAGTTTCTGAGGCAAAAACAGCCTTCCATTGGAGAA
ACCTAGGGGTTCTGGGCTTCAAGTGAGGAGCCATGGGTGGTACCTGGAGCTAAAACATCTGAAGATTCC
AGAGTCGTACAGCCTCAAACGCACTTATGATGTTATCTCAAGCTCAACAACCTCTGATGAGACTGAAA
TAGAGATTCACACAGCAACAAGAGATCCTATTCTGGACTCTGTCCACCTAAAACCTCTAGAAGTCTGA
ACAGCCAAGGGCAACACTGGCTCCAATCGAAGCGTTATTTGAATCCCGAAATGTGGAATCTTACCAGT



CCTGAAGTGCACCTACAACGGCTGCTCCTCAGCAAACACTACATCTATCCCTTCCACACCCAAACGACAAT
 CAACACCCAAACCGCCAAGAGTCAAGCCTGCACCCAGGCAGACAACCAGCATGCCTCCAAAGCTCAAAC
 ACCCACTCAAGGATGCCAGCAAAGAGCCAGTTCCTAAGGAACCCCTGCATACGACTTCAAAGCCAAA
 ATGCCACCAAGTCTGAAGTGGCAGACACTACATCTGTTCCAAAAGATGAACGACTTCCCTTAAACCG
 ATCCAGAGGTCACTCACAGTGAACCTGCACCTTAGAGACACGGGGCATTCTCTCATACCTGTGATTT
 ACCAAGACCTAGTCAAGAGGAAC TACAACCGCCATGGAAGAAACAGACCAGTCTACCAAGAGCTCTTC
 ACGATAAGATTCCAGAACAACTGAATTGGCAAAGACAACACTCAGGCACCACACAGATTGCATACAGCTC
 CTGTGAGGCCAGAATACCTGGCAGGCCACATGGCAGGCCTGCTCTGAACAAAACAAC TACAAGCCTGA
 TAAAACCAAACCCAGAGGGACGTCCCATAAAAACGGAGTAGGAACAGGAACCAAGCAAGCACCTAAGCCA
 CCAAGTCTGGGAGAAATGCGTCAGTGGATTACATGCCACAAGAAAACAGGCTCAGTCTCAGGGACGC
 GTCGTCCACCCATACCACATAGGCATTCGTCCACTAGACCTGTGTCTCCAGAGAGAAGGCCCTTACCC
 GAATAATGTCACCGGGAAGCCAGGACGTGCGGGAATTGTTTCTCCAGCCGGGTAACTCCACCCCTG
 AAGGCAACTCCACCCTATCGGAACAGCCACAGCGAGACCAGGGGCAGAACAAAAGGAACCACTGCTC
 CTGCTTCAAGAAGAGTTTGGTACTACAAC TACTGACTTCAAGTCCCACAAAGAACTGATCCCT
 TGGGAAGCCAGTTCATAGTCCCATGTGCGATATATCCCAAAGCCTGAAAACAAGCCTGTTCCATC
 ACTGACTCAGTCAGACGGTTCCTACAGAGGAAGCCACGAGGGGAATGCCACCAGCCACACAGAACC
 CACCCACCAACCTCACTGTGGTCACTGTGGAAGGCTGCCCTCATTGTGCATCTTGGACTGGGAAAAAC
 TCTAAATGACACTGTCACTGAATATGAAGTCATATCCAGAGAAAAATGGGTCACTCAGTGGGAAGAACA
 GCCATTCAAATACCAATCAAACGTTCTCTACAGTAGAAAACCTGAAACCAGATACAAGCTATGAATTC
 AAGTGAACCCAAAAATCCACTTGGTGAAGGCCCGCCAGCAACACGGTAGCGTTCACTACTGAATCAGC
 TGACCCAAAGAGTGAAGTGAACCAATTTCTGCAGGAAGAGATGCCATCTGGACTGAAAGACCTTTTAACTCA
 GACTCTTACTCAGAATGCAAAGGCAACAGTATGTTAAAAGGACGTGGTATAAAAAATTTGTCGGAGTGC
 AGCTATGTAAC TCTCAGATAACAAGATTTATTTGAGCGATTCCCTCACAGGCAAGTTTACAACATAGG
 AGATCAGAGGGGCCACGGAGAAGATCACTGCCAGTTTGTGGATTCATTTTTAGATGGTCCACAGGACAG
 CAACTCACCTCTGAACAGTTACCCACAAAGAAGGCTATTTTCAAGCTGTTTCGTAGGAACCTGTCCAAT
 TTGGAGAAATAGGTGGTCATACCCAAATCAATTATGTCCAGTGGTATGAATGTGGGACCACAATACCTGG
 AAAATGG

AGCGGACCGACGCGTACGCGGCCGCTCGAG - GFP Tag - GTTTAA

Protein Sequence:

>MG215135 representing NM_001014422

Red=Cloning site Green=Tags(s)

MLSSLGCLLLCGSIALALGNAQKLPKGKPSLVHINTTSDSILLKFLRPANVKGFLGLGYGSNVSPN
 QYFPLPTEGKFTEAVVDAEPKYLIVVVRAPPPSQKSCSGKSRPRKPLQLVVGTLTPSSVFLSWGFLINP
 HHDWTLPSHCPSDRFYTI RYREKDKEKKWIFQLCPATETIVENLKPNTVYEFVGDNIIEGGIWSKIFNHK
 TIVGSKNKVNGKIQSTYDQVHSPVPRKLIPLTIKQVIQNVTHRASTKSPDKTPFGGTLVHLIIPGLN
 ESTVKLPTSIMLEISDALKAQLAKNETLALPAESKTPEVEKLAGQPVTVTPESVSRSTKPTLSSALDTAE
 TALVLSSEKTSERARVLIPEFELPLSTLAPKRFPEFPEAKTAFPLEKPRGSWASSEEPWVPGAKTSEDS
 RVVQPQTATYDVISSSTTSDETEIEIHTATRDPILDSVPPKTSRTAEQPRATLAPIEALFESRNVEIFTS
 PEVRRPTAAPQQTTSIPSTPKRQSTPKPPRVKPAQRQTSMPPKLTTPHSRMPAKEPVPKEPLHTTSKPK
 MPPSPEVADTTSVPKDERLSLKPDPVTHSETAPLETGRIPLIPVISPRPSQEELQTAMEETDQSTQELF
 TTKIPRTTELAKTTQAPHLHTAPVRRIPGRPHGRPALNKTTRPDKTKPRGTSKNGVGTGKQAPKP
 PSPGRNASVDSHATRKPGSVSGTRRPPIPHRHSSTRPVSPEERRPLPPNNVTGKPGRAGIVSSSRVTSPPL
 KATLHPIGTATARPGAEQKEPTAPASEEEFGTTDFSSSPTKETDPLGKPRFIGPHVRYIPKPENKPCSI
 TDSVRRFPTEEATEGNATSPQNPPNTLVVTVVEGCPSFVILDWEKPLNDTVTEYEVISRENGSFGKNK
 SIQITNQTFSTVENLKPDTSYEFQVKPKNPLGEGPASNTVAFSTESADPRVSEPI SAGRDAIWTERPFNS
 DSYSECKGKQYVKRTWYKFFVGQQLCNSLRYKIYLSDSLTKGFYNIQDQRGHGEDHCQFVDSFLDGRGTGQ
 QLTSEQLPTKEGYFRAVRQEPVQFGEIGGHTQINYYQWYECGTTIPGKW

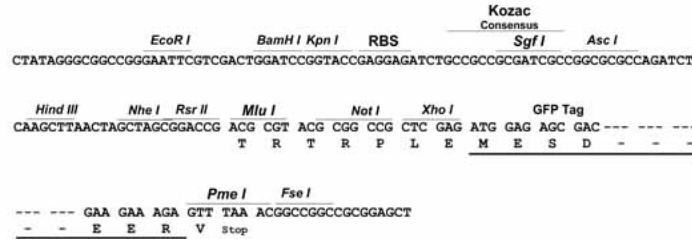
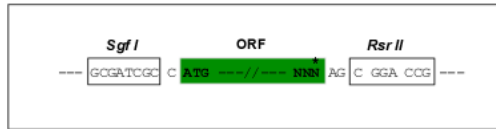
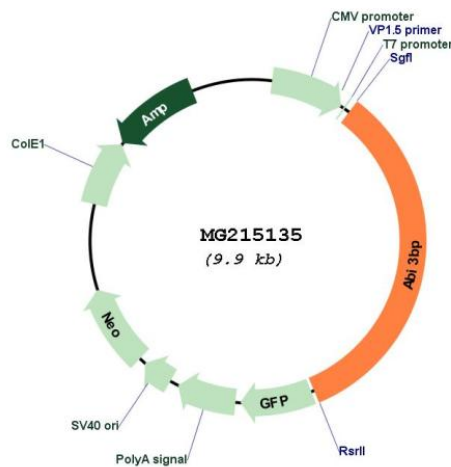
SGPTRRRLE - GFP Tag - V

Restriction Sites:

Sgfl-RsrII

Cloning Scheme:

Cloning sites used for ORF Shuttling:


Plasmid Map:

ACCN: NM_001014422

ORF Size: 3297 bp

OTI Disclaimer: The molecular sequence of this clone aligns with the gene accession number as a point of reference only. However, individual transcript sequences of the same gene can differ through naturally occurring variations (e.g. polymorphisms), each with its own valid existence. This clone is substantially in agreement with the reference, but a complete review of all prevailing variants is recommended prior to use. [More info](#)
OTI Annotation: This clone was engineered to express the complete ORF with an expression tag. Expression varies depending on the nature of the gene.

| | |
|-------------------------------|---|
| Components: | The ORF clone is ion-exchange column purified and shipped in a 2D barcoded Matrix tube containing 10ug of transfection-ready, dried plasmid DNA (reconstitute with 100 ul of water). |
| Reconstitution Method: | <ol style="list-style-type: none">1. Centrifuge at 5,000xg for 5min.2. Carefully open the tube and add 100ul of sterile water to dissolve the DNA.3. Close the tube and incubate for 10 minutes at room temperature.4. Briefly vortex the tube and then do a quick spin (less than 5000xg) to concentrate the liquid at the bottom.5. Store the suspended plasmid at -20°C. The DNA is stable for at least one year from date of shipping when stored at -20°C. |
| RefSeq: | <u>NM_001014422.2, NP_001014422.1</u> |
| RefSeq Size: | 4454 bp |
| RefSeq ORF: | 3300 bp |
| Locus ID: | 320712 |
| Cytogenetics: | 16 C1.1 |