

Product datasheet for **MG215133**

Abi3bp (NM_178790) Mouse Tagged ORF Clone

Product data:

Product Type:	Expression Plasmids
Product Name:	Abi3bp (NM_178790) Mouse Tagged ORF Clone
Tag:	TurboGFP
Symbol:	Abi3bp
Synonyms:	5033411B22Rik; AI506287; BG172926; D930038M13Rik; eratin; TARSH
Mammalian Cell Selection:	Neomycin
Vector:	pCMV6-AC-GFP (PS100010)
E. coli Selection:	Ampicillin (100 ug/mL)
ORF Nucleotide Sequence:	>MG215133 representing NM_178790 Red=Cloning site Blue=ORF Green=Tags(s)

TTTTGTAATACGACTCACTATAGGGCGGCCGGAATTCGTCGACTGGATCCGGTACCGAGGAGATCTGCC
GCC**CGATCGCC**

ATGCTCTCCAGCCTGGGGTGTCTACTTCTCTGTGGAAGTATTGCACTTGCTCTGGGAAATGCACAGAAAT
TGCCAAAAGGTAAAAAGCCAAGCTTGAAGTGCACATCAATACCACCAGCGACTCCATCCTTGAAGTT
CCTGCGTCCAAATGCAAACGTAAGCTGGAAGTTTTCTCCTGGGATATGGCAGCAATGTGTCTCCAAAC
CAGTACTCCCTCTCCACAGAAGGGAAATTCACAGAGGCTGTAGTTGATGCAGAGCCGAAGTATCTGA
TAGTCGTACGACCTGCTCCTCCTCCAGCCAGAAGAAGTCATGTTTCAGGGAAATCTCGCCCTCGAAACC
CCTCCAGCTGGTGGTGGGTACGTTGACACCGAGTTCTGTCTTCTGTCTGGGGATTCTCATCAACCCA
CACCATGACTGGACATTGCCAAGCCACTGTCCAGTGACAGATTTTATACAATTCGATATAGAGAAAAAG
ATAAAGAAAAAGAAATGGATTTTTCAACTCTGCCAGCTACTGAAACAATTGTGGAAAATCTAAAGCCCAA
CACAGTTTATGAATTTGGTGTGAAAGACAATATAGAAGGTGGAATTTGGAGTAAGATTTTCAATCATAAG
ACTATTGTTGGAAGTAAAAACAAAGTAAACGGGAAAAATCCAAAGCACTTATGACCAGGTCCACTCAGTGC
CAGTCCCGAGGAAGCTAATCCCACTAACGATCATTAAAGCAAGTGATTGAGAAATGTTACTCACAGGGCTTC
AACCAAATCCCCAGACAAGACTCCTTTTGGGGGAACAATATTAGTTCATCTGATTATCCGGGTCTTAAT
GAATCCACTGAAAACCTCCACATCCATAATGCTTGGATTTCCGATGCTCTCAAGGCACAATTAGCTA
AGAATGAAACATTGGCTTTACCAGCAGAATCTAAAACACCAGAGGTCGAAAAATTGGCAGGGCAGCCAGT
AACAGTGACTCCGGAATCAGTTTCAAGAAGCACTAAGCCACCCTGTCTAGTGCTTTAGACTGACAGAG
ACAGCACTGGTCTCAGTGAGAAGACGTGAGAAACAGCCCGCTCTGTTCTAATACCTGAGTTGAATTGC
CCTTGAGCACTTTAGCTCCAAAAGGTTCCAGAGTTTCTGAGGCAAAAACAGCCTTCCATTGGAGAA
ACCTAGGGGTTCTGGGCTTCAAGTGAGGAGCCATGGGTGGTACCTGGAGCTAAAACATCTGAAGATTCC
AGAGTCGTACAGCCTCAAACGCACTTATGATGTTATCTCAAGCTCAACAACCTTCTGATGAGACTGAAA
TAGAGATTCACACAGCAACAAGAGATCCTATTCTGGACTCTGTCCACCTAAAACCTCTAGAAGTCTGA
ACAGCCAAGGGCAACACTGGCTCCAATCGAAGCGTTATTTGAATCCCGAAATGTGAAATCTTCACCACT



[View online »](#)

CCTGAAGTGCACCTACAACGGCTGCTCCTCAGCAAACACTACATCTATCCCTTCCACACCCAAACGACAAT
 CAACACCCAAACCGCCAAGAGTCAAGCCTGCACCCAGGCAGACAACCAGCATGCCTCCCAAGCTCAAAAC
 ACCACACTCAAGGATGCCAGCAAAGAGCCAGTTCCTAAGGAACCCCTGCATACGACTTCAAAGCCAAAA
 ATGCCACCAAGTCTGAAGTGGCAGACACTACATCTGCACCTTTAGAGACACGGGGCATTCTCTCATACT
 CTGTGATTTACCAAGACCTAGTCAAGAGGAACATAAAACCGCCATGGAAGAAACAGACCAGTCTACCCA
 AGAGCTCTTACGACTAAGATTCACGAACAACGAATTGGCAAAGACAACACTCAGGCACCACACAGATTG
 CATACAGCTCCTGTGAGGCCAGAACTACTGGCAGGCCACATGGCAGGCCTGCTGAACAAAACAACCTA
 CAAGGCTGATAAAACCAAAACCCAGAGGGACGTCCCATAAAAACGGAGTAGGAACAGGAACCAAGCAAGC
 ACCTAAGCCACCAAGTCCTGGGAGAAATGCGTCAGTGGATTACATGCCACAAGAAAACAGGCTCAGTC
 TCAGGGACGCGTCGTCCACCCATACCACATAGGCATTCTGCTCAGTACGCTGTGTCTCCAGAGAGAAGGC
 CTTTACCCCGAATAATGTCACCGGAAGCCAGGACGTGCGGGAATTGTTTCTCCAGCCGGTAACGTC
 CCCACCCCTGAAGGCAACACTCCACCCTATCGAACAGCCACAGCGAGACCAGGGGCAGAACAAAAGGAA
 CCAACTGCTCCTGCTCAGAAGAAGAGTTTGGTACTACAACACTGACTTCAGTTCAAGTCCCACCAAGAAA
 CTGATCCCCTTGGGAAGCCAGGTTCATAGTCCCATGTGCGATATATCCCAAAGCCTGAAAACAAGCC
 CTGTTCCATCACTGACTCAGTCAGACGGTTCCTACAGAGGAAGCCACGGAGGGGATGCCACCAGCCCA
 CCACAGAACCCACCCACCAACCTCACTGTGGTCACTGTGGAAGGCTGCCCTCATTGTGATCTTGGACT
 GGGAAAAACCTCTAAATGACACTGTCACTGAATATGAAGTCATATCCAGAGAAAAATGGGTCACTCAGTGG
 GAAGAACAAGTCCATTCAAATTACCAATCAAACGTTTCTTACAGTAGAAAACCTGAAACCAGATACAAGC
 TATGAATCCAGGTGAAACCCAAAAATCCACTTGGTGAGGGCCCCGCCAGCAACACGGTAGCGTTTCAGTA
 CTGAATCAGCTGACCCAAGAGTGAGTGAGCCAATTTCTGCAGGAAGAGATGCCATCTGGACTGAAAGACC
 TTTTAACTCAGACTCTTACTCAGAATGCAAAGGCAAACAGTATGTTAAAAGGACGTGGTATAAAAAATTT
 GTCGGAGTGCAGCTATGTAACCTCTCAGATAAAGATTTATTTGAGCGATTCCCTCACAGGCAAGTTTT
 ACAACATAGGAGATCAGAGGGCCACGGAGAAGTCACTGCCAGTTTGTGGATTCAATTTAGATGGTTCG
 CACAGGACAGCAACTCACCTCTGAACAGTTACCCACCAAAGAAGGCTATTTTCAGAGCTGTTTCGTCGAGAA
 CCTGTCCAATTTGGAGAAATAGGTGGTCATACCCAAATCAATTATGTCCAGTGGTATGAATGTGGGACCA
 CAATACCTGGAATGG

AGCGGACCGACGCGTACGCGGCCGCTCGAG - GFP Tag - GTTTAA

Protein Sequence:

>MG215133 representing NM_178790

Red=Cloning site Green=Tags(s)

MLSSLGCLLLCGSIALALGNAQKLPKGGKPSLVHINTTSDSILLKFLRPNANVKLEGFLLGYGSNVSPN
 QYFPLPTEGKFTAEVDAEPKYLIVVRPAPPPSQKSCSGKSRPRKPLQLVVGTLTPSSVFLSWGFLINP
 HHDWTLPSHCPSDRFYTIRYREKDKKWIIFQLCPATETIVENLKPNTVYEFVGDNIIEGGIWSKIFNHK
 TIVGSKNKVNGKIQSTYDQVHVPVPRKLIPLTIIKQVIQNVTHRASTKSPDKTFFGGTILVHLIIPGLN
 ESTVKLPTSIMLEISDALKAQLAKNETLALPAESKTPEVEKLAGQPVTVPESVSRSTKPTLSSALDTAE
 TALVLSKTSETARSVLIPFELPLSTLAPKRFPEFPEAKTAFPLEKPRGSWASSEEPWVVPGAKTSEDS
 RVVQPQTATYDVISSSTTDETEIEIHTATRDPIILDSVPPKTSRTAEQPRATLAPIEALFESRNVEIFTS
 PEVRPTTAAPQQTTSIPSTPKRQSTPKPPRVKPAQRQTSMPPKLTSPHRMPAKEPVPKEPLHTTSKPK
 MPPSPEVADTTSAPLETRGIPLIPVISPRPSQEELQTAMEETDQSTQELFTTKIPRTTELAKTTQAPHRL
 HTAPVVRPRIPGRPHGRPALNKTTTRPDKTKPRGTSKNGVGTGKQAPKPPSPGRNASVDSHATRKPGSV
 SGTRRRPPIPHRHSSTRPVSPERRPLPPNNVTGKPRAGIVSSSRVTSPLKATLHPIGTATARPGAEQKE
 PTAPASEEEFGTTDFSSSPTKETDPLGKPRFIPHVRYIPKPKENKPCSI TDSVRRFPTEEATEGNATSP
 PQNPPTNLTVVTVEGCPFSVILDWEKPLNDTVTEYEVISRENGSFSGKNKSIQITNQTFSTVENLKPDS
 YEFQVKPKNPLGEGPASNTVAFSTESADPRVSEPI SAGRDAIWTERPFNSDSYSECKGKQVYKRTWYKFF
 VGVQLCNSLRYKIYLDLSLTGKFYNIQDQRGHGEDHCQFVDSFLDGRGTGQQLTSEQLPTKEGYFRAVRQE
 PVQFGEIGGHTQINIVQWYECGTTIPGKW

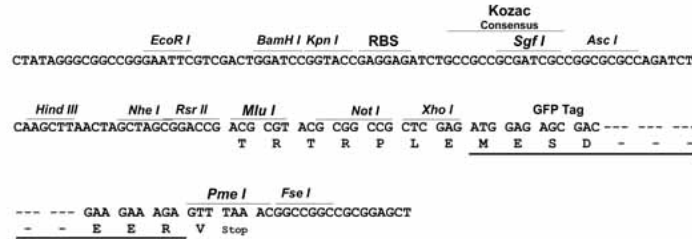
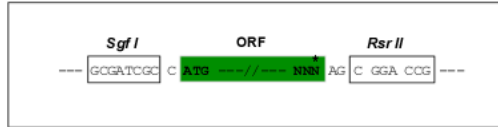
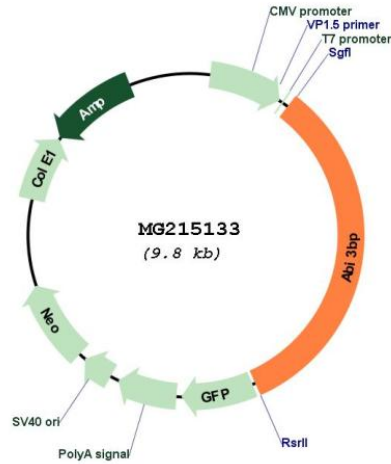
SGPTRRRLE - GFP Tag - V

Restriction Sites:

Sgfl-RsrII

Cloning Scheme:

Cloning sites used for ORF Shuttling:


Plasmid Map:

ACCN: NM_178790

ORF Size: 3237 bp

OTI Disclaimer: The molecular sequence of this clone aligns with the gene accession number as a point of reference only. However, individual transcript sequences of the same gene can differ through naturally occurring variations (e.g. polymorphisms), each with its own valid existence. This clone is substantially in agreement with the reference, but a complete review of all prevailing variants is recommended prior to use. [More info](#)
OTI Annotation: This clone was engineered to express the complete ORF with an expression tag. Expression varies depending on the nature of the gene.

Components:	The ORF clone is ion-exchange column purified and shipped in a 2D barcoded Matrix tube containing 10ug of transfection-ready, dried plasmid DNA (reconstitute with 100 ul of water).
Reconstitution Method:	<ol style="list-style-type: none">1. Centrifuge at 5,000xg for 5min.2. Carefully open the tube and add 100ul of sterile water to dissolve the DNA.3. Close the tube and incubate for 10 minutes at room temperature.4. Briefly vortex the tube and then do a quick spin (less than 5000xg) to concentrate the liquid at the bottom.5. Store the suspended plasmid at -20°C. The DNA is stable for at least one year from date of shipping when stored at -20°C.
RefSeq:	<u>NM_178790.4, NP_848905.2</u>
RefSeq Size:	4394 bp
RefSeq ORF:	3240 bp
Locus ID:	320712
Cytogenetics:	16 C1.1