

## Product datasheet for **MG215096**

### Parp10 (NM\_001163575) Mouse Tagged ORF Clone

#### Product data:

<b>Product Type:</b>	Expression Plasmids
<b>Tag:</b>	TurboGFP
<b>Symbol:</b>	Parp10
<b>Mammalian Cell Selection:</b>	Neomycin
<b>Vector:</b>	pCMV6-AC-GFP (PS100010)
<b>E. coli Selection:</b>	Ampicillin (100 ug/mL)



ORF Nucleotide Sequence: >MG215096 representing NM\_001163575  
Red=Cloning site Blue=ORF Green=Tags(s)

TTTTGTAATACGACTACTATAGGGCGCCGGGAATTCGTGACTGGATCCGGTACCGAGGAGATCTGCC  
GCCGGATCGCC

ATGGCAGAGGTGGAGGCAGGGCAGCCTTGAGCTCCGGGACTGCCCCAGAATACCAGATGAGCTCA  
T TACTCTGACTTTGAAAACCACTGCTCGCTCGGGTGGAGGACTTCTATTGAGCTGGCAGAGACTTGGCTG  
TGGGGTGTCTCATCTTTCAAGATCCTGCAGATGCAAAGAGGGTCTTAGCCCAGGCAGAGCACCAGCTA  
CATGGTGTCCGACTGAGCCTGAGGCCAGCCCCACCGCTGCCCCAGAAGCTGTGCTTCTCCAACACTGC  
CACCTGGCACTTCACTCTGAGTCTGGAGCAACATGTTAGGCTTGTGGGTGCTGCAGGACACCCCGT  
GCAGACTTGGCATGCCCTGGCCAGTCTCGGCAGGACTGTGCCCTGGTCCAGTTATCCACGCCCTTTCT  
GAGGCAGAGGTCAGTGCCTGGCAGAACAGGCCCGGAATCTGCCCTGAATGGAGCCACTGTGCTCTTGG  
CCTGGGTGCCCCAGACCCGAGCAGTACGTGTGGTGGACAGTCTTCTCTGTGGACCTGTTATTGTTGGA  
GCTCTACCTGGAAAATGAGCGTCGCAGTGGTGGCGACCCCTGGAGGGTCTGCGCAGCTGCCTGGGCAG  
CTAGGCACTGTTATTTCCCTTTCAGCAATGGCAGGTGGCTGAACGGGTGCTGAAGCAGAAACTGGCTAC  
AGGGCATTGAGTTGAGCCTTGTCCCTCACTATGATGTCTTAGAGCCAGAAGCGCTCGCTGAGGGCGCTAG  
TGGCAGGGACCACTCAGCTACTCAAGAATCTGGAGTCACTGGTCTGCGCTACAGGAACTGGAGGACTG  
GCCGGGGCTCTGACCATGGCTGTGGCTCTGGGGAGGCACCAACAATAGGAACCTTCTAAGGGCAG  
GTCTGTAGGAGCTCCAGGACAAGCCCTGCCAGTTGACTCGGGATCAATTAGGATCCAGGGGAGTATGG  
GTCTACAAGCCAGTCCAGTCCAGTAGAGAGCTCTACAGAGCTCCCAGAGCAAGTAGGACCCATGGCCTCA  
GACTCAGTGGGTGTTCCAGGAGCAGGAGGGCTGGGGAAAGTGGCCAGGGCAAGAGGGGCTAATGGGTC  
TAGTGGGGACAGCCATGGAGTCTGTAGAGACTGGGCTGGAGAGCCCTGGGTATGGGGAGATGCAGAAGCA  
AGAGGGCCTGGTGGAAATGGTGTGTCAGTGGAAACAGGAGCTGTGCGCTACCTGCAGCTTTATTATGAG  
GACCTCCTCGCCAGCCTAGAAGATGTTGCCCTTTCCCACTGAAGGAACGGATGTGACTGGCTTTCGGC  
TGTGTGGAGCCAGGGCCCTGCCAGGCAGCCCAAGAGTTGCTTACAGAGTCTGCTGGCAGCATTAGCTG  
TCACACGCTGAACATGAAGCACCCGGCAGTCCAGGTTCTGTGGTGTGGAGGGCAGCACCTTCTT  
CACAGACTGGAGGCTCAGTCCAGTGTGTCTTCGGGACAGAACATCTGGCCAGCGCCACCCTGGACATAG  
ACCCTGAAAGGACAGATCCCACTGAGGCCCTCCAAGTCTCCATGGCCACATTACAGGCATCGATCAGGA  
GAGCTTGAGACTGGAGGACGTCGAGAGCTACTGGCTACCCTGGAGAGCCACATGGAGGGGAGGACAGG  
GTGCTCTGGAGATGGAGAAGGAGAACTGGAGGACCAGGAGAGACTGTTGTAGAGCAGCAGGAGGAAA  
TCCCCACACTTGAGGCTGAGGAGGAGCCTGTGGCCCTTAGCACCGGGCACGTGGGCAGTTAGAAGAAGA  
AGCCACACTTCAACTGGCTATCCACCAGGCTCTGGAGTCTCAAAGCCAGGTGGCAGATCAGCAGGAGGCT  
AATGCACTAAGGCGAGCCATGGCCCTTTCCTGTTAGAAGCAGAAGAGGCCCTGGATGAGGACACTGGGG  
GCGAGGCCAGCTGGTGGTGCACACATCCTTTGAGCAGGATGTGGATGAATTGAACCAGGCCTTATCCAA  
TGCCCTTGGAGGCACACCTTCGGGAGGAGACAGTGAAGTCTCCAAGGGCGCATGCTACCCCGGAGCTGGGG  
GCTCGTCTGAAAAGGTGTCATGATGTGAGTGTACCCTCCGTGGCGACCGAGTTGCTCTCCGTGGCTTTG  
GGGTCCAGCCTGCCCGCGGCTCGCCACTTAGCTGCTCTGCTTGTGACCCCTGGGACCAGAATTTGAC  
CTTTCTTTGGAGGCTTCAAACCAACTTGTCTGAGCAGGGGCTGAAGGAACCTTGGGCAGACTGGAG  
GCCCTGGAAGAGAATCCAGGAGTTCCAAGATGTGGTGGCGGCCTTTTATAGCACCTGGATGCTGTCC  
ACGGCAGGATCCGATTTGTCAGTGAACCGCTGTACACCCATTGCTGCAGCAACAGTACCAGCTGCA  
CCGGGAGGCTTTAATGCAGAGCTGCCAGCAACGCCAGTGGAGCAGGCTCTACCATGGCACTTCAGAG  
TCTGCAGTGTGACATCTGTGCGCACGGCTTCAATCGCAGTTTCTGTGGCCGAAACGGCACACTTACG  
GACAGGGCGTGTACTTCGCAAGCGTGCCTCTCTGTCGGTACTGGATCGCTACTCGCTCCCAACGCAGA  
AGGCTACAAGGCAGTGTGTTGGCACAGGTGCTGACGGGTGACTATGGACAGGGTTCGCCGGTCTGAAG  
GCACCTCCTTTGAGGCTCCTGGTCAAGTGTCTGCTACGACAGCGCTGTGGACTGCCTTACGACGCCCA  
GAATCTTTGTCATCTTTCAGATACCCAAGCTTACCAGCTCATCTAATCACCTGCAAGAACATACTCCC  
GGGTACCC

AGCGGACCGACGCGTACGCGGCCGCTCGAG - GFP Tag - GTTTAA

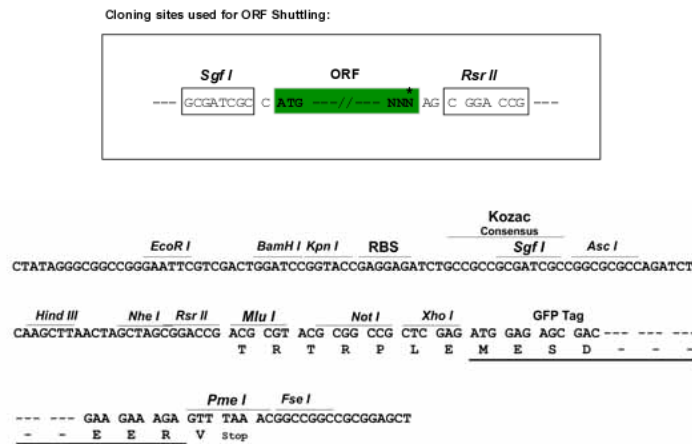
**Protein Sequence:** >MG215096 representing NM\_001163575  
 Red=Cloning site Green=Tags(s)

MAEVEAGAALRLRGLPPEIPDELITLYFENHRRSGGGLLSWQRLGCGGVLIFQDPADAKRVLAQAEHRL  
 HGVRLSLRPAPPRAPERVLLQHLPPGTSPLSLEQHVQALLGAAGHPVQTCHALASPRQDCALVQLSTPLS  
 EAEVSALAEQARNLPLNGATVSLAWVPQTRAVRVVDSASPVDLLELLEENERRSGGGPLEGLRSLPGQ  
 LGTVISFQQWQVAERVLKQKHWLQGIELSLVPHYDVLPEALAEVSGRDHSATQESGVIGHAPTGTGGL  
 AGALTMAVGSGEAPQQLGTLRAGPVGAPQALPVDVSGSIRIQGSMGSTSPVDPVESSTELPEQVGPMS  
 DSVGVQEQEGLGEVATGQEGMLMGLVGTAMESVETGLESPYQEMQKQEGLEVEMVMSVEPGAVRYLQLYE  
 DLLASLEDVALFPLEGTDTVFRLCGARAPCQAAQELLQSLGSI SCHTLNMKHPGSARFLLGVEGQHLL  
 HRLEAQFQCVFGEHLASATLDIDPERTDPTALQVLHGHITGIDQESLRLEDVRELLATLESPHGGEDR  
 VPLEMEKEKPGGPGETVVEQQEEIPTLEAEEEPVALSTGARGQLEEEATLQLAIHRSLSESQSQVADQQA  
 NALRRAMALSLLEAEEALDEDTGGEAQLVVHTSFEQDVDELNQALSNALAEHLREETVSLQGRMLPPELG  
 ARLERCHDVSATLRGDRVVLRGFGVQPARAARHLAALLVDPWDQNLTFPLEASKPNLSEQGLKEPLGRLE  
 ALEENSQEFQDVVRAFYSTLDAVHGRIRIVRVERVSHPLLQQYQLHRERLMQSCQQRPEQVLYHGTSE  
 SAVLDICAHGFNRSFCGRNGTLYGQGVYFAKRASLSVLDKDRYSPNAEGYKAVFVAQVLTGDYGGSRGLK  
 APPLRVSGQVLRYSADVCLQQPRIFVIFHDTQALPTHLITCKNILPGTP

SGPTRRRLE - GFP Tag - V

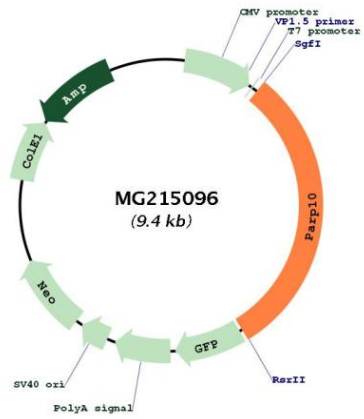
**Restriction Sites:** Sgfl-RsrII

**Cloning Scheme:**



<b>ACCN:</b>	NM_001163575
<b>ORF Size:</b>	2880 bp
<b>OTI Disclaimer:</b>	The molecular sequence of this clone aligns with the gene accession number as a point of reference only. However, individual transcript sequences of the same gene can differ through naturally occurring variations (e.g. polymorphisms), each with its own valid existence. This clone is substantially in agreement with the reference, but a complete review of all prevailing variants is recommended prior to use. <a href="#">More info</a>
<b>OTI Annotation:</b>	This clone was engineered to express the complete ORF with an expression tag. Expression varies depending on the nature of the gene.
<b>Components:</b>	The ORF clone is ion-exchange column purified and shipped in a 2D barcoded Matrix tube containing 10ug of transfection-ready, dried plasmid DNA (reconstitute with 100 ul of water).
<b>Reconstitution Method:</b>	<ol style="list-style-type: none"><li>1. Centrifuge at 5,000xg for 5min.</li><li>2. Carefully open the tube and add 100ul of sterile water to dissolve the DNA.</li><li>3. Close the tube and incubate for 10 minutes at room temperature.</li><li>4. Briefly vortex the tube and then do a quick spin (less than 5000xg) to concentrate the liquid at the bottom.</li><li>5. Store the suspended plasmid at -20°C. The DNA is stable for at least one year from date of shipping when stored at -20°C.</li></ol>
<b>Note:</b>	Plasmids are not sterile. For experiments where strict sterility is required, filtration with 0.22um filter is required.
<b>RefSeq:</b>	<a href="#">NM_001163575.1</a> , <a href="#">NP_001157047.1</a>
<b>RefSeq Size:</b>	3307 bp
<b>RefSeq ORF:</b>	2883 bp
<b>Locus ID:</b>	671535
<b>UniProt ID:</b>	<a href="#">Q8CIE4</a>
<b>Cytogenetics:</b>	15 D3
<b>Gene Summary:</b>	ADP-ribosyltransferase that mediates mono-ADP-ribosylation of glutamate and aspartate residues on target proteins. In contrast to PARP1 and PARP2, it is not able to mediate poly-ADP-ribosylation. Catalyzes mono-ADP-ribosylation of GSK3B, leading to negatively regulate GSK3B kinase activity. Involved in translesion DNA synthesis in response to DNA damage via its interaction with PCNA.[UniProtKB/Swiss-Prot Function]

Product images:



Circular map for MG215096