

Product datasheet for **MG215051**

Pde8b (NM_001170669) Mouse Tagged ORF Clone

Product data:

Product Type:	Expression Plasmids
Product Name:	Pde8b (NM_001170669) Mouse Tagged ORF Clone
Tag:	TurboGFP
Symbol:	Pde8b
Synonyms:	B230331L10Rik; C030047E14Rik
Mammalian Cell Selection:	Neomycin
Vector:	pCMV6-AC-GFP (PS100010)
E. coli Selection:	Ampicillin (100 ug/mL)



[View online »](#)

ORF Nucleotide Sequence:

>MG215051 representing NM_001170669
 Red=Cloning site Blue=ORF Green=Tags(s)

TTTTGTAATACGACTCACTATAGGGCGGCCGGGAATTCGTCGACTGGATCCGGTACCGAGGAGATCTGCC
 GCC**CGCATCGCC**

ATGGGCTGCGCCCCAGCATCCATGTCTCGCAGAGCGGTGTGATCTACTGCCGGGACTCGGATGAGTCCA
 ACTCGCCCCGCCAGACCAGCAGCGTGTTCGACAGGGCCCCACGGCGCCCTGCACGGCCTCTTCGTGCAGAC
 CGACGCCGCCAGCCATGCCCCGAGTCGCGCGGGGACCCCCGGGGCTGTCCGAGTCCGCAGATCC
 CGGGCTGAACTGGGCAGCGGCAGCAGCAGGGGTCTCGGGCCCCGCCACGACCCTGCCGGGGCCGGA
 GGCGCCACTGCTGCAGCAGCGCCGAGGCCAGACTAGCTACACCAGCGTCAAGCAGGTGTCTTC
 TGCAGAGGTGCGCATTGGGCCATGAGACTGACACAGGACCCTATCCAGGTTCTGCTAATCTTCGCAAAG
 GAAGATAGCCAGAGTGTGGCTTCTGGTGGCCTGTGACAGAGCTGGCTACAGATGCAACATCGCTCGCA
 CTCAGAGTCCGCCCTCGAGTGTCTTCGGACAAGCATCATGAAATTATTGTGATCGATCACAGGCAGAG
 CCGGAACCTTTGATGCAGAAGCCGTGTGCAGGTCAATCCGGGCCACGAACCCCTCTGAGCACCGGTGATC
 CTGGCTGTCTTTCAAGCATCTGATGACCATGAAGAGGCCCTAGTCCCTTCTTCTTTCATGCAGGCT
 TCAACCGGAGATTTATGGAGAACAGCAGCATAATTGCTTGTCTATAATGAACTGATTCAAATAGAACCGG
 GGAAGTTCGCTCACAGTTCAAATTACGGGCCTGTAATTCAGTGTTCACAGCGTTAGACCACTGTCACGAA
 GCCATAGAAAATAACAAGTGTGACCATGTGATTCAGATTCACCGGATTCATCGTGACTCCGGGGACAAC
 CTCAGACAGAGCCTATTCGTTCCAGACACAAGAGCAGGAGGAAAGAGTCCATTGATGTGAAATCAATATC
 TTCTCGGGCAGTGATGCGCCAAGCCTACAGAATCGCCGCTACCCCTCCATGGCCAGGATCCACTCCATG
 ACCATTGAGGCTCCCATCACAAGGTTATAAATAATCAATGCAGCTCAGGAGAACAGCCCAAGTTACAG
 TAGCAGAGGCCTTGGACAGAGTCTAGAAATTTACGGACCACAGAAGTATTCCCTCAGTGGGAAC
 CAAAGATGAGGATCCCCACACAGTACCTTGTGGGGCCTGATGACTGATGGCTTGAGGAGACTGTCA
 GGAACAGAGTATGTGTTTACAAAGAATGTGACACACAGTCACAGTCACCTCTCGATGCCATCACCATCA
 ATGATGTCCCCCAAGTATCGCCAGCTCCTTGATAATGAGGAAAGCTGGGACTTCAACATCTTTGAATT
 GGAAGCCGTTACACATAAAAGGCCACTTGTGTACCTGGGCTTAAAGGCTTCTCTCGTTTGGAGTATGT
 GAATTTTTAAACTGTAAGTAACTTCTCGGGCCTGGCTGCAAGTATTGAAGCCAACCTACCCTCCT
 CCAACGCCTACCACAACCTCACCCTATGCTGCCGATGACTGCATGCCACGGCTTCTTCTTGGAAAGGA
 AAGAGTGAAGGAAGCCTGGACCAGCTGGATGAGGTGGCTGCTCTGATTGCTGCCACAGTCCACGACGTG
 GATCACCCCGGAAGGACCAACTTTTCTGTGCAACGCCGCGCAGCGAGCTCGCTGTGCTCTACAATGACA
 CTGCAGTCTTGAGAGTACACACAGCCCTGGCCTTCCAGCTCACAGTCAAGGACACCAAGTGCAACAT
 TTTCAAGAATATTGACAGGAACCACTATCGAACGCTGCGCCAGGCTATTATCGACATGGTTTTGGCTACA
 GAGATGACAAAACACTTCGAGCAGTGAACAAATTCGTGAACAGCATCAACAAGCCACTGGCAGCTGAGA
 GTGAGGGCAGTGATTGTGAATGCAACCCTACCGGAAGAAGTCTTCTGAGAACCAATCCTCATCAAACG
 CATGATGATTAAGTGTCCGACGTGGCCAACCCGTGCCGGCCTTGGACCTGTGCATTGAATGGGCTGGA
 AGGATCTCCGAGGAGTACTTTGCTCAGACTGATGAAGAGAAGAGGAGGGGCTGCCTGTGGTGATGCCAG
 TGTTCCGACCGAATACCTGCAGCATCCCCAAGTCCCAGATCTCCTTCATCGACTACTTCATAACAGACAT
 GTTTGATGCTTGGGATGCCTTCGCTCACCTGCCTGCCCTGATGCAGCACCTGGCCGATAACTATAAACAC
 TGAAGACACTGGATGACCTCAAGTGAAAACCTGAGACTTCCATCTGACAGC

ACGCGTACGCGGCCGCTCGAG - GFP Tag - GTTTAA

Protein Sequence: >MG215051 representing NM_001170669
 Red=Cloning site Green=Tags(s)

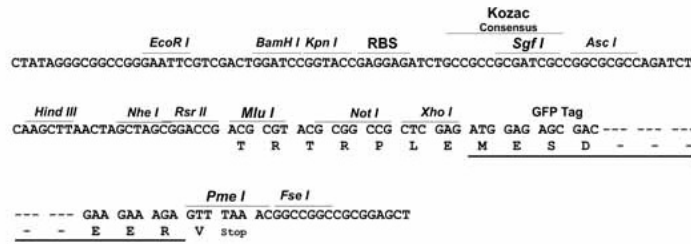
MGCAPSIHVSQSGVIYCRDSDSENSPRQTSSVSQGPTAPLHGLFVQTDAAAMPSPRAAGPPGAVRVRRS
 RAELGSGSSTGSSGPATTTTCRGRRRHCCSSAEATQTSYTSVKQVSSAEVRIGPMRLTQDPIQVLLIFAK
 EDSQSDGFWWACDRAGYRCNIARTPESALECFLDKHHEIIVIDHRQSRNFDAEAVCRSIRATNPSEHTVI
 LAVVSAQASDDHHEASVLP LLHAGFNRRFMENSSIIACYNELIQIEHGEVRSQFKLRACNSVFTALDHCHE
 AIEITSDDHVIQIHRIDRSDGNSQTEPHSFRHKSRRESIDVKSISRRGSDAPSLQNRYPSPMARIHSM
 TIEAPITKVINIINAAQENSPVTVAEALDRVLEILRTTELYSPQLGKDEDPHTSDLVGGMLTDGLRRLS
 GNEYVFTKNVHSHSHLSMPITINDVPPSIAQLLDNEESWDFNIFELEAVTHKRPLVYLGLKVFSTRFGVC
 EFLNCTETTLRAWLQVIEANYHSSNAYHNSTHAADVLHATAFFLGKERVKGLDQLDEVAALIAATVHDV
 DHPGRTNSFLCNAGSELAVLYNDTAVLESHHTALAFQLTVKDTKCNIFKNIDRNHYRTLQAIIDMVLAT
 EMTKHFHEVNFVNSINKPLAAESEGSDCENPTGKNFPENQILIKRMMIKCADVANPCRPLDLCIEWAG
 RISEEYFAQTDEEKRQGLPVVMPVDFDRNTCSIPKSQISFIDYFITDMFDAWDAFAHLPALMQHLADNYKH
 WKTLDLCKCTLRLPSDS

TRTRPLE - GFP Tag - V

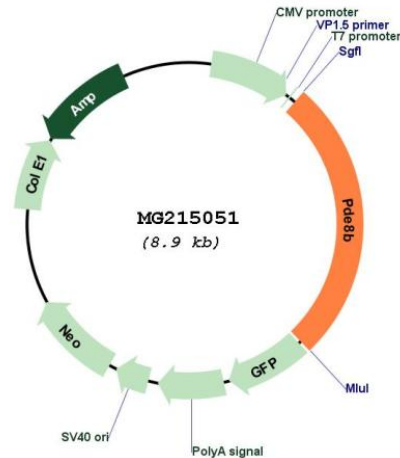
Restriction Sites: SgfI-MluI

Cloning Scheme:

Cloning sites used for ORF Shuttling:



Plasmid Map:



ACCN: NM_001170669

ORF Size: 2364 bp

OTI Disclaimer: The molecular sequence of this clone aligns with the gene accession number as a point of reference only. However, individual transcript sequences of the same gene can differ through naturally occurring variations (e.g. polymorphisms), each with its own valid existence. This clone is substantially in agreement with the reference, but a complete review of all prevailing variants is recommended prior to use. [More info](#)

OTI Annotation: This clone was engineered to express the complete ORF with an expression tag. Expression varies depending on the nature of the gene.

Components: The ORF clone is ion-exchange column purified and shipped in a 2D barcoded Matrix tube containing 10ug of transfection-ready, dried plasmid DNA (reconstitute with 100 ul of water).

Reconstitution Method:

1. Centrifuge at 5,000xg for 5min.
2. Carefully open the tube and add 100ul of sterile water to dissolve the DNA.
3. Close the tube and incubate for 10 minutes at room temperature.
4. Briefly vortex the tube and then do a quick spin (less than 5000xg) to concentrate the liquid at the bottom.
5. Store the suspended plasmid at -20°C. The DNA is stable for at least one year from date of shipping when stored at -20°C.

RefSeq: [NM_001170669.1](#), [NP_001164140.1](#)

RefSeq Size: 4619 bp

RefSeq ORF: 2367 bp

Locus ID: 218461

Cytogenetics: 13 D1