

Product datasheet for **MG215038**

Krtap4-13 (NM_027087) Mouse Tagged ORF Clone

Product data:

Product Type:	Expression Plasmids
Product Name:	Krtap4-13 (NM_027087) Mouse Tagged ORF Clone
Tag:	TurboGFP
Symbol:	Krtap4-13
Synonyms:	2300006N05Rik
Mammalian Cell Selection:	Neomycin
Vector:	pCMV6-AC-GFP (PS100010)
E. coli Selection:	Ampicillin (100 ug/mL)
ORF Nucleotide Sequence:	>MG215038 representing NM_027087, codon optimized . Due to the complexity of NM_027087, the ORF clone is codon optimized for mammalian Expression. The nucleotide sequence differs from the reference sequence, yet the amino acid sequence remains identical.

Red=Cloning site Blue=ORF Green=Tags(s)

TTTTGTAATACGACTCACTATAGGGCGGCCGGAATTCGTCGACTGGATCCGGTACCGAGGAGATCTGCC
GCC**GCGATCGCC**

ATGGTATCCTCCTGTTGCGGCAGCGTATGTTCCGAGGAGGGTGCGGACAGTCCTGTTGCCAGCCTTCTCT
GTTGCCAAACCACCTGCTGTCGCCCTTCTGCTGTGTTAGCAGCTGTTGCCGCCCTTCTGCTGTCGGCC
ATCCTGTTGTGTCTCCAGTTGTTGTCGCCCCCAATGTTGTGAGTCAGTGTGCTGCCAGCCAACATGTTGC
CGCCCCAGTTGTTGCATTAGCTCCTGTTGTCGACCCTCATGCTGCCGACCAAGTTGCTGCGTCAGCAGTT
GCTGCAGGCCGAGTGTGTCAGAGTGTCTGCTGTCAACCCACTTGTGTAGACCTAGCTGCTGCAGGCC
ATGTTGCGGTTTCATCCAGCTGCTGCGTCTCTAGTTGTTGCCGCCCTCAGTGTGCATTTCAAGTTGCTGC
CGGCCATCTGTTGCCAGACAACATGCTGTGCAACAACCTGCTGTAGCCGGCATGTTCTCCGGTTCCT
GTTGC

ACGCGTACGCGGCCGCTCGAG - GFP Tag - GTTTAA



[View online »](#)

Protein Sequence: >MG215038 representing NM_027087
 Red=Cloning site Green=Tags(s)

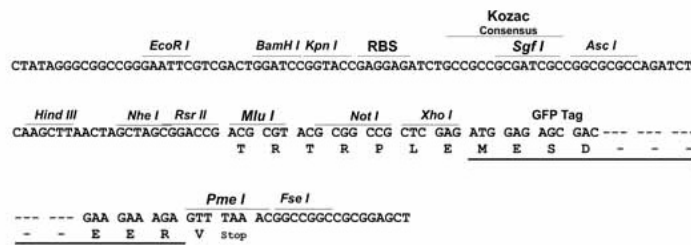
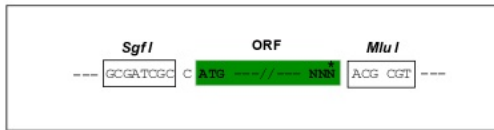
MVSSCCGSVCSEEGCGQSCCQPSCCQTTCRPSCCVSSCCRPSCCRPSCCVSSCCRPQCCQSVCCQPTCC
 RPSCCIISSCCRPSCCRPSCCVSSCCRPQCCQSVCCQPTTCRPSCCRPCCGSSCCVSSCCRPQCCIISSCC
 RPICCCQTTCCRTTCRPAACSSGSCC

TRTRPLE - GFP Tag - V

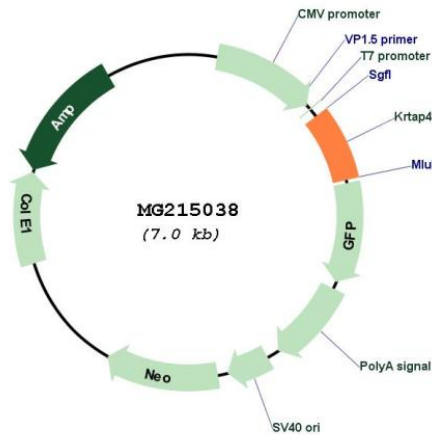
Restriction Sites: SgfI-MluI

Cloning Scheme:

Cloning sites used for ORF Shuttling:



Plasmid Map:



ACCN: NM_027087

ORF Size: 495 bp

OTI Disclaimer:	The molecular sequence of this clone aligns with the gene accession number as a point of reference only. However, individual transcript sequences of the same gene can differ through naturally occurring variations (e.g. polymorphisms), each with its own valid existence. This clone is substantially in agreement with the reference, but a complete review of all prevailing variants is recommended prior to use. More info
OTI Annotation:	This clone was engineered to express the complete ORF with an expression tag. Expression varies depending on the nature of the gene.
Components:	The ORF clone is ion-exchange column purified and shipped in a 2D barcoded Matrix tube containing 10ug of transfection-ready, dried plasmid DNA (reconstitute with 100 ul of water).
Reconstitution Method:	<ol style="list-style-type: none">1. Centrifuge at 5,000xg for 5min.2. Carefully open the tube and add 100ul of sterile water to dissolve the DNA.3. Close the tube and incubate for 10 minutes at room temperature.4. Briefly vortex the tube and then do a quick spin (less than 5000xg) to concentrate the liquid at the bottom.5. Store the suspended plasmid at -20°C. The DNA is stable for at least one year from date of shipping when stored at -20°C.
RefSeq:	NM_027087.3 , NP_081363.1
RefSeq Size:	819 bp
RefSeq ORF:	498 bp
Locus ID:	69464
Cytogenetics:	11 D