

Product datasheet for **MG215018**

Zfp957 (NM_001033215) Mouse Tagged ORF Clone

Product data:

Product Type:	Expression Plasmids
Tag:	TurboGFP
Symbol:	Zfp957
Synonyms:	AU017455
Mammalian Cell Selection:	Neomycin
Vector:	pCMV6-AC-GFP (PS100010)
E. coli Selection:	Ampicillin (100 ug/mL)



[View online »](#)

ORF Nucleotide Sequence: >MG215018 representing NM_001033215
 Red=Cloning site Blue=ORF Green=Tags(s)

TTTTGTAATACGACTACTATAGGGCGCCGGGAATTCGTGACTGGATCCGGTACCGAGGAGATCTGCC
 GCCCGGATCGCC

ATGAATAAGCAAAAGAAACAGAACAGCAACCACCTCCACCTCCTCAGCCCCCTCAGATTCCAGAAAGTT
 CTGCAGATGAAGAGCCAAAGCCAAAAAGCGGAGGCAAGGAGGGAGAGAAGGAAGCCTGGGGCCCGGCC
 AAGGAAGCGGAAAACAAAACAGCAGTTCCATTGTAGACCCTCAAGAACCAGGATCAAGCTAAAGTAC
 GCTACCCAGCCACTAGGTAAAACCAATGCCAAAACCAAGTCTTTCCCCCTTACATCCATGCAGTAAATA
 AGGGTGAACCTGGAGCTGTTTGTACAATCGTCAATGCTGAAGAAGACGAAGAACAGATCAAAATGGTGAG
 GAGCCGGAAGGGTCAGAGATCTGTACCCCTCCCTATAGCAACACAGGAAGCAAAGTCTCCAGCTTCA
 TCCTTTATGCTGCAGGGACCTGTGTAACAGAATCTTCTGTAGTGGAGCCGGTGGTTTGTCTGTCTGTG
 GCAAGGGGGCCGGTTACGGTAACATGGGTGACCTCTTTGGACCTTTTATCCCCAAAATTATCCAGCCAC
 TCTCCGAAGAATCCACCTCCTAAGAGGTCCACAGAAATGCAGAGCAAAGTCAAGGTTCCGCACAAAAGT
 GCTTCTAAGGGTTCTAAAAGTACTGACTGAGGAGGAGGAGCAACAGCAGCAGCAGAAGGAGCAGAGGAGCC
 CGGCTGCTCATCTAGGTTCAATCTGCGCCAGCGCTCCAAAGACTCTGCTGGAGGTCCTCGGTCCCTGTC
 CAGGGGGCGCCCTCGTAAAAATGTAGCCTCTAAGGGCAACAGTAAAGAGACTTTTTAGACACAAAAGCCC
 TCTGTACCTGCCTCATCAAAGGTGGTCTGAGCGGGTGGAGGTCCTCGGTCCCTGTCAGGGGGCGCC
 CTGTAATAAATGTAGCCTCTAAGGGCAACAGTAAAGAGACTTTTTAGACACAAAAGCCCTGTACTAC
 CACATCAAAGGTGGTCTGAGCGGGAGTGGAGTGTCTGAGCGGGTGGAGGTCCTCGGTCCCTGTCC
 AGGGGGCGCCCTCGTAAAAACGCAGCCGCTAAGGGCAGCAGTAAAAAGACTGTTTTAGACACAAAAGCTCT
 CTGTACCTACCCTCAAAGGTACTAATAGTTCAAAGTACTGACTCAGGAGCAACAGCAGCAGAAGGA
 GCAGAGGAGCCTGGCTGCTCATCTAGTTCAATCTGCGCCAGCGCTCCAAAGACTCTGCTGGAGGTCCT
 CGGTCCCTGTCCAGGGGTGCGCCCTCGTAAAAATGTAGCCCTAAGGGCAACAGTAAAGAGACTGTTTTAG
 ACACAAAAGCCCTGTACTACCACATCAAAGGTGGTCTGAGTGGGAGTTACAAAATCCCTGAACGACC
 TCTCCCAGCAACGAATTTGGGTCCATGAGGATTGATTCTCTGGCCAATGGAACCTACTTGGTCTAT
 GGCAGGCTCTATGGCCTGTGGAAGCGCTGGAAAACGCCAGAGATGTGACATGCTCCCACTGCCAGAAGG
 CTGGCGTACTCTGGGCTGCTACAACAAAGGCTGCACCTTCCGATACCATTACCCATGTGCCATTGATGC
 AGATTGTTTGTGAATGAGGAGAATTTCTCAGTGAGGTGCCCAAGCACAAGGTGAGACTGCAGAGACGA
 GAAGGTGGTATGGACAAACA

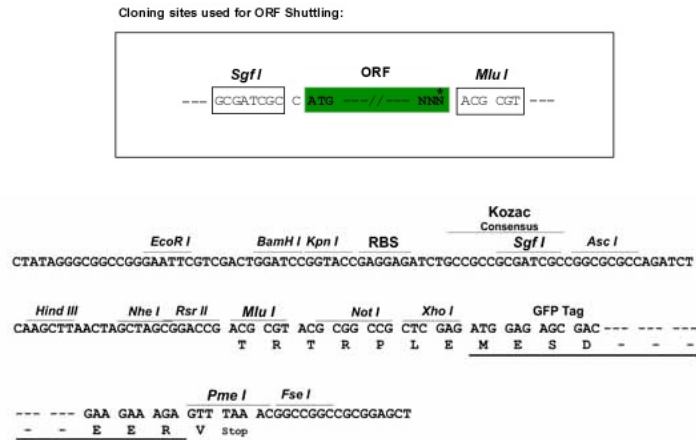
ACCGGTACGCGGCCGCTCGAG - GFP Tag - GTTTAA

Protein Sequence: >MG215018 representing NM_001033215
 Red=Cloning site Green=Tags(s)

MNKQKQKQPPPPPPQIPESADEEPPKPKRRRQRERRKPGARPRKRKTKQAVPIVDPQEPEIKLKY
 ATQPLGKTNKTKSFPPYIHAVNKGELGAVCTIVNAEEDDEEIKLVRSRKGQRSLTPPYSNTGSKVLPAS
 SFMLQGPVVTESVVEPVVCCCLCGKGAGYNGMDLFGPFYQNYPATLPKNPPPKRSTEMQSKVKVRHKS
 ASKGSKTDTEEEEQQQQKEQRSPAHPFNLRQRSKDSAGGPRSLSRGRPRKNVASKGNSKETFLDTKP
 SVPASSKGGPERGGPRSLSRGRPRKNVASKGNSKETVLDTKPSVPTTSKGGPEREWSPPERGGPRSL
 RGRPRKNAAKGSKKTVLDTKL SVPTTSKGTNSKTDTEQQQQKEQRSLAHPFNLRQRSKDSAGG
 RSLSRGRPRKNVASKGNSKETVLDTKPSVPTTSKGGPEWELQIPERPLPSNEFWVHEDCILWANGTYLVY
 GRLYGLLEALENARDVTCSHCQKAGATLGCYNKGCTFRYHYPCAIDADCLLNEENFSVRCPKHKVRLQRR
 EGGDGT

TRTRPLE - GFP Tag - V

Restriction Sites: SgfI-MluI

Cloning Scheme:


ACCN: NM_001033215

ORF Size: 1701 bp

OTI Disclaimer: The molecular sequence of this clone aligns with the gene accession number as a point of reference only. However, individual transcript sequences of the same gene can differ through naturally occurring variations (e.g. polymorphisms), each with its own valid existence. This clone is substantially in agreement with the reference, but a complete review of all prevailing variants is recommended prior to use. [More info](#)

OTI Annotation: This clone was engineered to express the complete ORF with an expression tag. Expression varies depending on the nature of the gene.

Components: The ORF clone is ion-exchange column purified and shipped in a 2D barcoded Matrix tube containing 10ug of transfection-ready, dried plasmid DNA (reconstitute with 100 ul of water).

Reconstitution Method:

1. Centrifuge at 5,000xg for 5min.
2. Carefully open the tube and add 100ul of sterile water to dissolve the DNA.
3. Close the tube and incubate for 10 minutes at room temperature.
4. Briefly vortex the tube and then do a quick spin (less than 5000xg) to concentrate the liquid at the bottom.
5. Store the suspended plasmid at -20°C. The DNA is stable for at least one year from date of shipping when stored at -20°C.

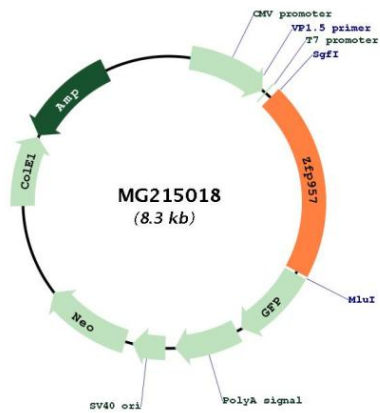
Note: Plasmids are not sterile. For experiments where strict sterility is required, filtration with 0.22um filter is required.

RefSeq: [NM_001033215.3](#), [NP_001028387.1](#)

RefSeq Size: 2751 bp

RefSeq ORF: 1704 bp
 Locus ID: 105590
 Cytogenetics: 14 D3

Product images:



Circular map for MG215018