

## Product datasheet for **MG214973**

### Zfp534 (NM\_001127188) Mouse Tagged ORF Clone

#### Product data:

Product Type:	Expression Plasmids
Tag:	TurboGFP
Symbol:	Zfp534
Synonyms:	Gm13159; OTTMUSG00000010681
Mammalian Cell Selection:	Neomycin
Vector:	pCMV6-AC-GFP (PS100010)
E. coli Selection:	Ampicillin (100 ug/mL)



**ORF Nucleotide Sequence:** >MG214973 representing NM\_001127188, codon optimized.

Due to the complexity of NM\_001127188, the ORF clone is codon optimized for mammalian Expression.

The nucleotide sequence differs from the reference sequence, yet the amino acid sequence remains identical.

Red=Cloning site Blue=ORF Green=Tags(s)

TTTTGTAATACGACTCACTATAGGGCGGCCGGAATTCGTCGACTGGATCCGGTACCGAGGAGATCTGCC  
GCCGCGATCGCC

ATGTCCGCTGCTTGGTAAACTCTCAAGGGCTGCTGACATTTAAAGATGTGGCTCTGGATTTCTCCC  
TGGAGGAGTGGGAGTGCCTCTCTTTTCGCACAGCGCTCATTGTACATGGACGTGATGCTGGAGAATTACAA  
CAATCTGCTCTTTGTGAGAATCATTGCATCCGGGGCAAAAACGGTAAAGTGCTTGATCAGGATAGCCAA  
TACATCGTACACGAACACATGAACATCCAGGAGAAGTCAAGCAAGTGGGACAAGCTGTCCAATGTTATCC  
TGGAATCCCTGCAGTGTACTCCGTATAAACTAATCATAGCTCAGATGCCCTTCAGTTTAGCACCCAGAA  
ACGCCTCAAACCTCGGAACACTAAGGAGGTGTGCAAGTACAATGATTGAGTTAATAGCTTGTCACTGTTC  
TCAACGATCTCTGAATCAGGGGATCAATATGCGAGAAGAAGAAGCATAACCGAAACGCCGAACTGGACA  
AGATTTTCGCTCTAAGCACAAGGTGATGGTGAAGAAAGATAACATAGCCGGGAATCCCTACAAGTGCTC  
CGAGTTTACAAAATATCTGACCCAGAGAGAGAAACTTCAAAGTCAACAGCGCATTACCACGGAAAAGAAG  
CCCTACGAATCCTTAAGAGCGACAAGTGTTCACGCACCAGATACATCTGAGCATTACCAGGGTATCC  
ATACTGAGGAGAAAATCTACAAATGTAGCGAGTGCACAAGTGTTCAAAAATAAGTTCAATCTCACTAT  
GCATCAACGAATTCATAAAGGTGAGAAGCCATATAAATGCAGCGAATGCGGGAAGTGTTCACCGACAAA  
ACTTCCTGAGGATTCACCAGAGAATCCACACCGGTGAAAAGCCATACAAATGTAGTGAATGCGGAAAGT  
GCTTACAGAAAAGAGCAGTCTCAGGATTCACCAGCGCATACATACCGGAGAAAAACCTACAAGTGTTT  
AGAATGTGGGAAGTGCTTACCAGAAAAGAGCTCTTATAGGATACACCAGAGGATCCATACTGGCGAGAAG  
CCCTATAAGTGTCTGAGTGTGATAAATGCTTTACGCAACAAGCTATCTGTCAATCCATCAACGCATAC  
ATACGGGCGAGAAGCCCTACAAATGTTGAGAGTGCACAAGTGTTCACAAAAGCAGTCCAACCTCTCTAT  
CCACCAGAGAATTCATACAGGTGAAAAACCATACAAGTGCAGCGAATGTGACAAGTGCTTACCCAGCAG  
TCTCATCTTCAATACACCAGCGCATTACATACGGGCGAAAAGCCCTACAAATGCAGCGAATGTGACAAAT  
GCTTTACTCAGCAGTCTATCTGTCTATCCATCAGCGAATTCACGCTGGTGAAGCCATACAAGTGCTC  
AGAGTGCATAAATGTTTCACGACCAAGGGCAATCTGATCATCCACCAGAGGATTCACACACGGGAAAAG  
CCTTATAAATGTTCCGAATGTGGAAAGTGCTTACAGAGAAGTCTAGCCTCCGCATTATCAGAGGATAC  
ACACTGGGAAAAGCCTTACAAGTGTAGCGAATGCGACAAGTGCTTACAAAAGCAGAGTAACTTTCAAT  
CCACCAGAGGATCCACACAGGTGAGAAGCCTTACAAATGTAGTGAGTGCAGAAAATGTTTCAACGAAAAG  
AATTCCTTAAAAATCCACCAGCGGATACATACCGGGGAGCGGCCTTATAAGTGTAGTGTGACAAGT  
GCTTACACAGAAGAGCTATCTGAATATTCACCAGCGGATACATGCGGGGAGAAGCCTTACAAGTGCTC  
TGAGTGTGATAAGTGTTCACAACCAAGGGCAATCTCATCCACCAGAGAATACACACCCGGGAAAAG  
CCCTACAAGTGCTCAGAGTGTGACAAATGTTTACCCAGAAAAGTCAAGTGTGAGCATTACCAGAAGATAC  
ACACTGGGAAAAGCCGTATAAG

ACGCGTACGCGGCCGCTCGAG - GFP Tag - GTTTAA

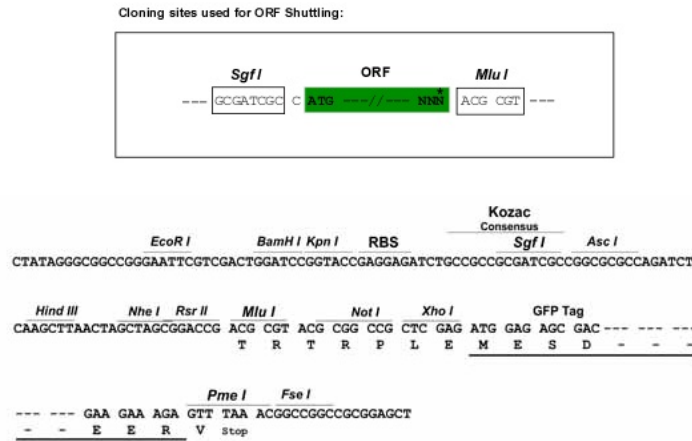
**Protein Sequence:** >MG214973 representing NM\_001127188  
Red=Cloning site Green=Tags(s)

```
MSVCLVNTPOGLLTFKDFVALDFSLEEWELSFARSLYMDVMLENYNNLLFVENHCIRGKNGKVLQDSQ
YIVHEHMNIQEKSSKWDKLSNVILESLQCTPYKTNHSSDALQFSTQKRLKPRNTKEVCKYNDVNSLSL
STISLNLQGINMQKKHNRNAELDKIFVSKHKVMVKDNIAGNPYKCFSEFKYL TQREKLQSQQRIYHGKK
PYESSKSDKCFTHQIHL SIHQGIHTEEKIYKCSECDKCFKNKFNLTMHQRIHKGEKPYKCECGKCFD
TSLRIHQRIHTGEKPYKCECGKCFTEKSSLRIHQRIHTGEKPYKCECGKCFTEKSSLRIHQRIHTGE
PYKCECDKCF TQQSYLSIHQRIHTGEKPYKCECDKCF TKQSNLSIHQRIHTGEKPYKCECDKCF TQ
SHLSIHQRIHTGEKPYKCECDKCF TQQSYLSIHQRIHAGEKPYKCECDKCF TTKGNLIIHQRIHTRE
PYKCECGKCFTEKSSLRIHQRIHTGEKPYKCECDKCF TKQSKLSIHQRIHTGEKPYKCECEKCFNEK
NSLKIHQRIHTGERPYKCECDKCF TQKSYLNIHQRIHAGEKPYKCECDKCF TTKGNLIIHQRIHTRE
PYKCECDKCF TQKSQLSIHQIHTGEKPYK
```

TRTRPLE - GFP Tag - V

**Restriction Sites:** SgfI-MluI

**Cloning Scheme:**



**ACCN:** NM\_001127188

**ORF Size:** 1983 bp

**OTI Disclaimer:** The molecular sequence of this clone aligns with the gene accession number as a point of reference only. However, individual transcript sequences of the same gene can differ through naturally occurring variations (e.g. polymorphisms), each with its own valid existence. This clone is substantially in agreement with the reference, but a complete review of all prevailing variants is recommended prior to use. [More info](#)

**OTI Annotation:** This clone was engineered to express the complete ORF with an expression tag. Expression varies depending on the nature of the gene.

**Components:** The ORF clone is ion-exchange column purified and shipped in a 2D barcoded Matrix tube containing 10ug of transfection-ready, dried plasmid DNA (reconstitute with 100 ul of water).

**Reconstitution Method:**

1. Centrifuge at 5,000xg for 5min.
2. Carefully open the tube and add 100ul of sterile water to dissolve the DNA.
3. Close the tube and incubate for 10 minutes at room temperature.
4. Briefly vortex the tube and then do a quick spin (less than 5000xg) to concentrate the liquid at the bottom.
5. Store the suspended plasmid at -20°C. The DNA is stable for at least one year from date of shipping when stored at -20°C.

**Note:** Plasmids are not sterile. For experiments where strict sterility is required, filtration with 0.22um filter is required.

**RefSeq:** [NM\\_001127188.1](#)

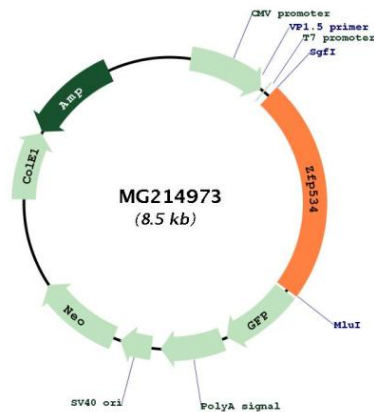
**RefSeq Size:** 2240 bp

**RefSeq ORF:** 1986 bp

**Locus ID:** 100503584

**Cytogenetics:** 4 E1

### Product images:



Circular map for MG214973