

Product datasheet for **MG214970**

Susd1 (NM_001163288) Mouse Tagged ORF Clone

Product data:

Product Type:	Expression Plasmids
Tag:	TurboGFP
Symbol:	Susd1
Synonyms:	A530080P10; Gm12528; OTTMUSG00000007332
Mammalian Cell Selection:	Neomycin
Vector:	pCMV6-AC-GFP (PS100010)
E. coli Selection:	Ampicillin (100 ug/mL)



ORF Nucleotide Sequence: >MG214970 representing NM_001163288
Red=Cloning site Blue=ORF Green=Tags(s)

TTTTGTAATACGACTCACTATAGGGCGCCGGGAATTCGTGCGACTGGATCCGGTACCGAGGAGATCTGCC
GCCGCGATCGCC

ATGGGCGGGGTCCCCGGGCACGCGCGCTCTCCAGGATGCGGGTTGCAGCGGCTGCTCGGCTCGTGC
TGCTGCTCAGCCTAGCCCGCGCGCTCAGCGGAGAGCCTGGCACGGAAGATGTAGATGTCTGTGCCACATG
CCATGAACATGCCACATGCCAGCAAAGGAAGGGAAGAGAATCTGCATTTGCAACTATGGGTTTTGGGGC
AACGGGAGGACACGGTGTGTTGACAAAGATGAGTGCCAGTTTGGAGCCACTGTGATCTGTGGGAACCACA
CATCCTGCCACAACACGCTGGAGGGTTCTACTGCATTTGCCACGAGGGCTACCGGGCCACAATAACAA
CGAGACGTTTATCCCAATGACGGCACTTCTGTGCAGACATCGATGAGTGTGAAGATTCTGGCCTGTGC
AGACATGGAGGGCGGTGTGTAATACTCCTGGGAGCTTTCATGCTACTGCATGGAAGGGTATGTGGCAA
AGAACGGGCTGAGCCTTCCACCCACGCACGGATGCCACATCGTGCACAGAAATAGACTGTGCCATCCC
TCCTGAAGTTCCTGAGGCTACGTCGTGGGAAGCTACAGCTCCACACTGGGCGGCCAGGCCATTATAGC
TGCAAGGAAGGGTTTCTCAGCGTCTCAGGAGACAGAATTTACGATGCACAGCCCTGGGTGTGTGGGAAC
CTCCCAAGTTACATTGCCAAGAGATCAGCTGTGGCAGCCCTCCTGAAATTCAGAACGCCATCTTGGTCCG
GAATCACAGCTCCAGACAGGGGAGTGTGGCTCATTATGACTGTCAGGAGGGCTTGGAGTCCAGGAGGA
AAGTCACTTCCGTTTGCACAGAGAAAGGCGCTGGAGTGAATCACTTATGCATGCACAGAAATATGA
TAGAAATTCATGATGTGTTGGTGTAAATGACACCTGTGTGAGATGGCAAATAAGTCCAGAGAGAGTGAA
CGCCAGGATCGTGTACTTGATACGCGTTGAAAGACAGCAGCCGGATGCTGCGGAATCAGTTTATGAGGAG
ACAGTCAATGTGACCACAGACAGCAGGACCCAGAAGTGTGCCTGCACCTCCAACAAGGAACCAATTACA
CCATAAGCATTTCGACGCCCTCCAGGCGCTCTGTGCCGCCATCCTTGGCTTCCAGACCCCTGAAGA
TGATCTCTTAGAAGATGACGGACTTTTCAATATCTCAGTATTTAATGAAACTTGTGTTGACGTTGAGCAGG
CACTCTAGGCAAGTTGGATCAGAACAATGTACCAAGTGGAGGTTCTGGGTGAGAGGTGGTATCTAGAGA
GCTCCTACCATGTTGCTCTCTTAACTTCAACAAGAGACCGAGCTCCAGAAGTGTGTTTAGATCTGTA
CCCCGCTACTGATTACACGATAAATCACCCTTCTGAGACCCACTGAGCCGCGCTCCGCACAAATAACC
ATAACAACCTCAGTGACAGCAAAAACAGACCATCGCTAATATTTCCGGTATATAATGATACCTGCCTGAGAT
GGAGCAGCCTCAAGACAGCTGATGTACTAGAGATGATTTTCCACATTTGGGGCCAGAGATGGTATCA
GAAGGCATTTGCCAGGAAATGGTCTTCAATACAACCAGCAGCAGCCAGGACCCTGAGATATGCCTGGAC
CTGCATCAAGGCACCAGCTACAACGTTAGCCTTCAAGGCTCTGTCTCGGCACTTCCCGTGGTCACTACC
TGACAACCCAGATCACAGAGCCCCACTTCTGAAGTAGACTTTTTCACTGTGCGGGGAAGGCCTTACC
ACGTTTACGCTGAGGAAAGTCAAGGAGATAAATGGACCTATCAGTTTATATCAGGTGTTGGTCTTCCC
CTGTCTTGCAAAGCACATTTCTTGTGATTCTGAAGGCATGACTTCACTTTGGCAACTTCTCCTG
CTGACGGATATGTGGTGCAGAAATCCTGGCCAGTGTGTTCCAGACGACAGTGGAGATATCTATTGG
AGACAGGCTCTACTATGGGGAATATTACAATGCACCTTTGAAAACAGGAAATGAGTACTGCATTCTGTTA
CGGATCACAAGTGAATGGAATAAGGTGAGAAGATATTCCTGTGCTGTCTGGGCTGAGGTAAGGACTCAT
CGCTCACAGCGCAGCAGATGTTGGTGTGGACTGGGCTCCGTGGCTTTGTGACCATCCTTGCATTCTT
CTCCTTCTCAGCAGTG

AGCGGACCGACGCGTACGCGGCCGCTCGAG - GFP Tag - GTTTAA

Protein Sequence: >MG214970 representing NM_001163288
 Red=Cloning site Green=Tags(s)

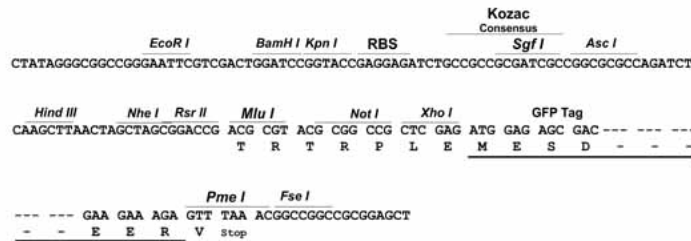
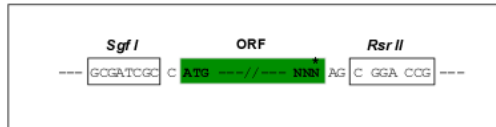
```
MGRGPRGTRRSPGCGLQRLLRLVLLLSLARGVSGEPGTEDVDVCATCHEHATCQKQEGKRICICNYGFWG
NGRTRCVDKDECFGATVICGNHTSCHNTPGGFYCICHEGYRATNNETFIPNDGTFCADIDECEDSGLC
RHGRCVNTPGSFACYCMEGYVAKNGPEPFHPRDATSCTEIDCGIPPEVPEGYVVGYSSTLGGQAHYS
CKEGLSVSGDRISRCTALGVWEPKLCQEIISCGSPPEIQNAILVGNHSSRQGSVAHYDCQEGFESPGG
KITSVCTEKAWSEITYACTEIMIEIHDVLFVNDTCVRWQISPERVNARIVYLIRVERQQPDAAESVYEE
TVNVTTDSRTPEVCLHLQQGTYTISISAAPRRSVPAILGFQTPEDDLLEDDGLFNISVFNETCLTLR
HSRQVQSEMYQVEVLGQRWYLESSYHVALFNFTTRDRAPEVCLDLYPATDYTINITLLRPTLPTSAQIT
ITTSVTAKQTIANISVYNDTCLRWSSKKTADVLEMYLFHIWGQRWYQKAFVQEMVFNTSSSQDPEICLD
LHQGTSYNVSLQALSSALPVVIYLTQITTEPPLPEVDFFTVRGRPLPRFTLRKVKKEINGPISSYQVLVLP
LSLQSTFSCDSEGMSFFGNTSPADGYAAEILASDVPDDTLEISIGDRLYYGEYYPNAPLKTGNEYCILL
RITSEWNKVRYSACAVWAEVKDSSLTAQQMVGVLGSAVAVTILAFFSFAV
```

SGPTRRRLE - GFP Tag - V

Restriction Sites: SgfI-RsrII

Cloning Scheme:

Cloning sites used for ORF Shuttling:



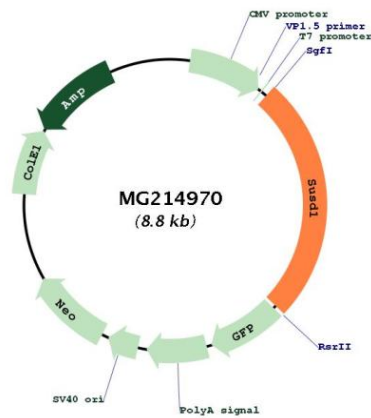
ACCN: NM_001163288

ORF Size: 2256 bp

OTI Disclaimer: The molecular sequence of this clone aligns with the gene accession number as a point of reference only. However, individual transcript sequences of the same gene can differ through naturally occurring variations (e.g. polymorphisms), each with its own valid existence. This clone is substantially in agreement with the reference, but a complete review of all prevailing variants is recommended prior to use. [More info](#)

OTI Annotation: This clone was engineered to express the complete ORF with an expression tag. Expression varies depending on the nature of the gene.

Components:	The ORF clone is ion-exchange column purified and shipped in a 2D barcoded Matrix tube containing 10ug of transfection-ready, dried plasmid DNA (reconstitute with 100 ul of water).
Reconstitution Method:	<ol style="list-style-type: none">1. Centrifuge at 5,000xg for 5min.2. Carefully open the tube and add 100ul of sterile water to dissolve the DNA.3. Close the tube and incubate for 10 minutes at room temperature.4. Briefly vortex the tube and then do a quick spin (less than 5000xg) to concentrate the liquid at the bottom.5. Store the suspended plasmid at -20°C. The DNA is stable for at least one year from date of shipping when stored at -20°C.
Note:	Plasmids are not sterile. For experiments where strict sterility is required, filtration with 0.22um filter is required.
RefSeq:	NM_001163288.1
RefSeq Size:	3295 bp
RefSeq ORF:	2259 bp
Locus ID:	634731
Cytogenetics:	4 B3

Product images:

Circular map for MG214970