

Product datasheet for **MG214967**

Cyp4f37 (NM_001100187) Mouse Tagged ORF Clone

Product data:

Product Type:	Expression Plasmids
Tag:	TurboGFP
Symbol:	Cyp4f37
Synonyms:	677156; Gm9705
Mammalian Cell Selection:	Neomycin
Vector:	pCMV6-AC-GFP (PS100010)
E. coli Selection:	Ampicillin (100 ug/mL)



ORF Nucleotide Sequence: >MG214967 representing NM_001100187
Red=Cloning site Blue=ORF Green=Tags(s)

TTTTGTAATACGACTCACTATAGGGCGCCGGGAATTCGTGACTGGATCCGGTACCGAGGAGATCTGCC
GCCGCGATCGCC

ATGCTCGCGCTAAGTGTCTGGGCTGGACCTGGGCTCTGTGGTGACCTTGTCATGGCATCTTCTGCTGC
TTGGAGCGGCATCTTGATTTTGGCCAGAATCCTTGCCTGGACTTACTCATTCTGTGAGAACTGCTCCCG
CCTCAGATGTTTCCCTCAGCCTCCTAAAAGAACTGGTTTTGGGTCACCTGGGCATGATTGAGCACAAT
GAGGAAGGCATGCAGCTGATGACTGAAGCAGGCCAGACTTACCGAGATGTCATCTCTGTTGGTGGGAC
CAGTGATCCCTGTGCTGAGGATTGTTGACCCTGCATTTGTTGCCCCCTGCTCCTGGCCTCAGCTTTGGT
GGCCCCAAAGGACACGACTTTCCATACCTTTGTGAAGCCCTGGCTGGGGATGGGCTCTTCTGAATTC
GGTGACAAGTGAGCCGCATCGCCGTCTGCTGACACCTGCCTTCCACTTTGACATCCTGAAGCCCTATG
TGAAGATATTTAACAGAGTGTGAACATCATGCACGCCAAGTGAAGCACCTATCCTCGAAGGCAGTGC
ACGCTCGAAATGTTTGGACACATCAGCCTCATGACCTGGACAGTCTGCAGAAATGCCTCTTTGGCTTT
GACAGCAACTGTCAGGAGTCTCCAGTGAATACATTTCTGCCATCTTGGAACTCAGCTCCCTCGTAATAA
AAAGGTCACATCAGCTCTTCTGTTCTGTTGACTTCTGTATTACCACACTGCTGATGGGCGGCGCTCCG
CAAGGCTGTGACCTGGTGCAACTTACAGATGCTGTCATTAGGGAGAGACGGCACACTCTCCAGC
CAAAACCATGATGAGTTCTTGAAGTCCAAGACTAAGTCAAGACTCTGGACTTCATTGACGTTCTCTTGT
TGGCCAAGGATGAACATGAAAAGGAGCTGTCAGATGAGGACATCCGGGCAGAGGCTGACACCTTTATGTT
TGGAGGCCATGACACGACAGCCAGTGCACCTCTCCTGGATCCTGTACAACCTGGCGAGGCACCCCAATAC
CAGGAGCGCTGCCGCGAGGAGTTCAGGAGCTGCTGAGGGCCGAGAGCCCGAGGATTGAATGGGACG
ACCTGGCCAGCTACCTTCTGACCATGTGCATCAAGGAGAGTCTGGCGTGCATCCCCAGTCATAGA
TCTCCTCCGCGCTGCACCCGGGACATTGTGCTACCTGATGGCCGGTGCATCCCTAAAGGGAACATCTGT
GTCATCAGCATCTTTGGTATTCATCACAATCCATCAGTCTGGCCAGACCCTGAGGTCTATGACCCCTTC
GCTTTGACCAGAAAACGCACACAAGAGCCCTCTCTGGCTTTTATCCCTTTTCTGCCGGGCCAGGAA
CTGCATAGGACAGACTTTCGCTATGAATGAGATGATGGTGGCACTGGCGTTGACTCTGCTGCGCTTCCGC
ATCCTGCCGATGACAAGGAGCCGCGCCGAAAGCCAGAGATAATCCTGCGGGCGGAGGGCGGGTTGTGGC
TGCGGGTGGAGCCGCTGAGCACAGTCTGAAGGACTCCAAACCTGACCTTGAGGCTTCTTACCACCC
TCCAATTGTTCTCTCCGTTCTCAGAAT

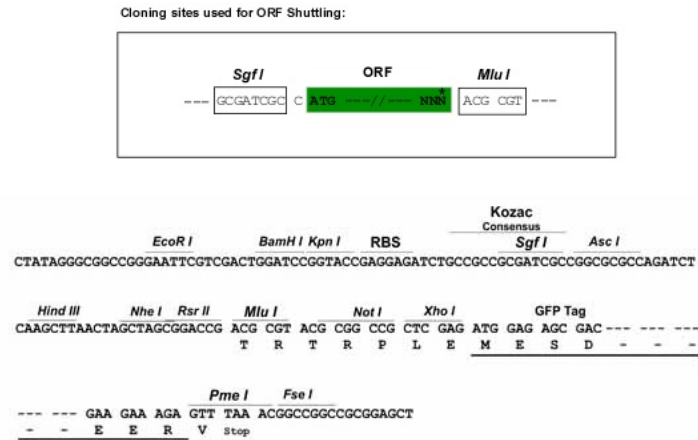
ACGCGTACGCGCCGCTCGAG - GFP Tag - GTTTAA

Protein Sequence: >MG214967 representing NM_001100187
Red=Cloning site Green=Tags(s)

MLRLSVSGLDLGSVVTLSWHLLLGAASWILARILAWTYSFCENC SRLRCPQPPKRNWFLGHLGMIEHN
EEGMQLMTEAGQTYRDVHLCWLGPIVLRIVDPAFVAPLLASALVAPKDTTFHTFVKPWLGDGLFLNS
GDKWSRHRLLTPAFHFDILKPYVKIFNQSVNIMHAKWKHLSEGSARLEMFEHISLMTLDSLQKCLFGF
DSNCQESPSEYISAI LELSSLVIKRSHQLFLVDFLYHTADGRRFRKACDLVHNFTDAVIRERRHTLSS
QNHDFLKSSTKSKTLD FIDVLLLAKDEHGKELSD EDIRAEADTFMFGGHDTTASALSWILYNLARHPEY
QERCRCQEVQELLRGREPQIEWDDLAQLPFLTMCIKESLRLHPPVIDLLRRCTRDIVLPDGRVIPKGNIC
VISIFGIHHNPSVWPDPEVYDPRFDPENAHKRPLAFIPFSAGPRNCIGQTFAMNEMVALALTLRFR
ILPDDKEPRRKPEIILRAEGLWLRVEPLSTVLKDSKPDLEASLPHPIVLSGSQN

TRTRPLE - GFP Tag - V

Restriction Sites: SgfI-MluI

Cloning Scheme:


ACCN: NM_001100187

ORF Size: 1638 bp

OTI Disclaimer: The molecular sequence of this clone aligns with the gene accession number as a point of reference only. However, individual transcript sequences of the same gene can differ through naturally occurring variations (e.g. polymorphisms), each with its own valid existence. This clone is substantially in agreement with the reference, but a complete review of all prevailing variants is recommended prior to use. [More info](#)

OTI Annotation: This clone was engineered to express the complete ORF with an expression tag. Expression varies depending on the nature of the gene.

Components: The ORF clone is ion-exchange column purified and shipped in a 2D barcoded Matrix tube containing 10ug of transfection-ready, dried plasmid DNA (reconstitute with 100 ul of water).

Reconstitution Method:

1. Centrifuge at 5,000xg for 5min.
2. Carefully open the tube and add 100ul of sterile water to dissolve the DNA.
3. Close the tube and incubate for 10 minutes at room temperature.
4. Briefly vortex the tube and then do a quick spin (less than 5000xg) to concentrate the liquid at the bottom.
5. Store the suspended plasmid at -20°C. The DNA is stable for at least one year from date of shipping when stored at -20°C.

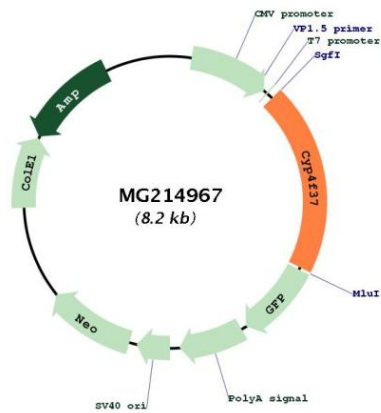
Note: Plasmids are not sterile. For experiments where strict sterility is required, filtration with 0.22um filter is required.

RefSeq: [NM_001100187.1](#), [NP_001093657.1](#)

RefSeq Size: 2642 bp

RefSeq ORF: 1641 bp
 Locus ID: 677156
 Cytogenetics: 17

Product images:



Circular map for MG214967