

Product datasheet for **MG214965**

Fam187b (NM_175240) Mouse Tagged ORF Clone

Product data:

Product Type:	Expression Plasmids
Tag:	TurboGFP
Symbol:	Fam187b
Synonyms:	1700020B09Rik; Tmem162
Mammalian Cell Selection:	Neomycin
Vector:	pCMV6-AC-GFP (PS100010)
E. coli Selection:	Ampicillin (100 ug/mL)

ORF Nucleotide Sequence: >MG214965 representing NM_175240
Red=Cloning site Blue=ORF Green=Tags(s)

TTTTGTAATACGACTCACTATAGGGCGCCGGGAATTCGTCGACTGGATCCGGTACCGAGGAGATCTGCC
GCCGCGATCGCC

ATGCTGGCTACTCTGTGGCTGGTTGGTCTTTCTTCCCATGCTGTGGGCCAGAGACTAATCAGCTGTC
CCTACAAGAATGTGTGTGTCAGTATGCCCTGCTCTCAGGCAGTGACGTGATACTGCAAGTAACTACCCCAA
AGCACTTTGGTATTTTTCTTCATCTTTAGAGGACAACTGTCCCTGGTCAACTCCAAGCCTGATGGGAGG
GTACTGCCTGGGAGCGACCTGCAGTTGTCTGACCCTAAGCCTCCAGACAGGCCTTACCGCTGCCTGG
ATAATCACAAGGCCGTTTGGTAGAATATGAGATTGACTTTTCAGAACATAGCTCTGTTGCACATCACTCA
CAAAGACCTGGGCCAAGAGCCCATGGGAAATGAGAGCATGAACCTGGGAGGCAAGGTTCTTGTTTTTACC
CGCTGGGATCCTTGGCAAGATTGTAACCGTTGCCAAAAGCCAGGTGAGCGCAAACGTCTAGGCTACTGCT
ATGTGGAGGAGCCCAAGAAAAGCCATGCCTTGGCTCTACCTGAGAGAGGAGAAGGTGACCAACAG
CCGCTGAGGCCTGAATCCAGCTACAAGCCTGCCAGGTACCCTGTGACACCGCCACGGAGACCAACCAG
CCGTACTTTGTCTTTGACACATATCTGCTGGACAAACCAACAGCAATGCTCGACTCAAGTGTCCCTTGG
CTTCCATCTACAGGCCTGTCCACTGGGAAGCTGACAACAGCCCTCTGACATGGCAGGACCAGCTCTCTGG
CCAGACGGTCAGCACCATCATGGACCTGCACAGTGGTGGCCAGCACCTGAAGGTCTTCCAGCCTGCCACT
TACAGATGTTTTGTGGAGCAGGAGCTCATAGCCAGTTCAACCCCACTGAGAGACAATCCAAAGCCCAGA
ACCCTTGGCAGCCAGAATCCAGCCAGACAAGGCAGACTCCGTTCTTAGGAGATTGAAGTTGATGGTGCT
GAGTATCTGTACTGGCCGTTGGAGGGCTTCTCTGTAAGGTGTTTTCCGTCCTGTCTGCGGCAAGAAG
AGGAGTCAGGTCTCTGGTAAA

ACGCGTACGCGGCCGCTCGAG - GFP Tag - GTTTAA



Protein Sequence: >MG214965 representing NM_175240
 Red=Cloning site Green=Tags(s)

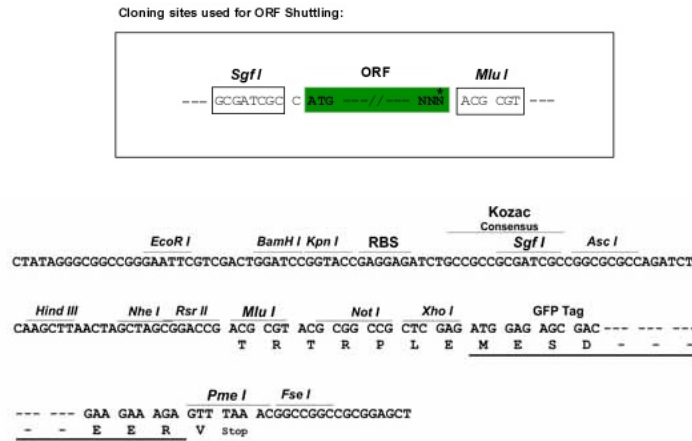
MLATLWL VGLSLPMLWAQRLISCPYKNVCQYALLSGSDVILQCNYPKALWYFSSSLEDKLSLVNSKPDGR
 VLPGSDLQLSDPKPSQTGLYRCLDNHKARLVEYEIDFQNIALLHITHKDLGQEPMGNESMNLGGKVLVFT
 RWDPWQDCNRCQKPGERKRLGYCYVEEPQEKPMPCWL YLREEKVTNSRLRPELQLQACQVPCDTATETNQ
 PYFVFDTYLLDKPNSNARLKCLPLASIYRPVHWEADNSPLTWQDQLSGQTVSTIMDLHSGGQHLKVFQPAT
 YRCFVEQELIAQFNPTERQSKAQNPWQPRIQDPKADSVLRRLKMLVLSISVLA VGGLLCKVFRPVCGKK
 RSQVLLVK

TRTRPLE - GFP Tag - V

Chromatograms: https://cdn.origene.com/chromatograms/ja1700_f09.zip

Restriction Sites: SgfI-MluI

Cloning Scheme:



ACCN: NM_175240

ORF Size: 1074 bp

OTI Disclaimer: The molecular sequence of this clone aligns with the gene accession number as a point of reference only. However, individual transcript sequences of the same gene can differ through naturally occurring variations (e.g. polymorphisms), each with its own valid existence. This clone is substantially in agreement with the reference, but a complete review of all prevailing variants is recommended prior to use. [More info](#)

OTI Annotation: This clone was engineered to express the complete ORF with an expression tag. Expression varies depending on the nature of the gene.

Components: The ORF clone is ion-exchange column purified and shipped in a 2D barcoded Matrix tube containing 10ug of transfection-ready, dried plasmid DNA (reconstitute with 100 ul of water).

Reconstitution Method:

1. Centrifuge at 5,000xg for 5min.
2. Carefully open the tube and add 100ul of sterile water to dissolve the DNA.
3. Close the tube and incubate for 10 minutes at room temperature.
4. Briefly vortex the tube and then do a quick spin (less than 5000xg) to concentrate the liquid at the bottom.
5. Store the suspended plasmid at -20°C. The DNA is stable for at least one year from date of shipping when stored at -20°C.

Note: Plasmids are not sterile. For experiments where strict sterility is required, filtration with 0.22um filter is required.

RefSeq: [NM_175240.5](#)

RefSeq Size: 1485 bp

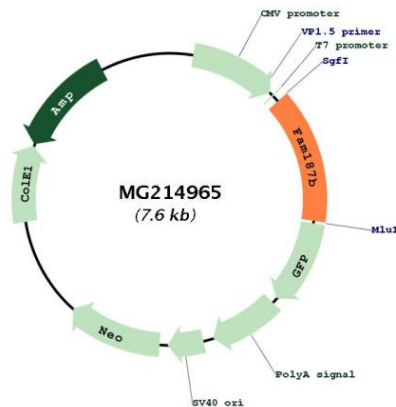
RefSeq ORF: 1077 bp

Locus ID: 76415

UniProt ID: [Q0VAY3](#)

Cytogenetics: 7 B1

Product images:



Circular map for MG214965