

## Product datasheet for **MG214933**

### Tpte (NM\_199257) Mouse Tagged ORF Clone

#### Product data:

Product Type:	Expression Plasmids
Product Name:	Tpte (NM_199257) Mouse Tagged ORF Clone
Tag:	TurboGFP
Symbol:	Tpte
Synonyms:	Pten2
Mammalian Cell Selection:	Neomycin
Vector:	pCMV6-AC-GFP (PS100010)
E. coli Selection:	Ampicillin (100 ug/mL)



[View online »](#)

ORF Nucleotide  
Sequence:

>MG214933 representing NM\_199257  
Red=Cloning site Blue=ORF Green=Tags(s)

TTTTGTAATACGACTCACTATAGGGCGGCCGGAATTCGTCGACTGGATCCGGTACCGAGGAGATCTGCC  
GCCGCGATCGCC

ATGTATGGAGAAAAGAAGAGCCATTTGTATCTCTGGATGGAACACTATGGGTATGACATGCCTGCAATA  
TTTACAAGATGATTCTCAGCCCTCCAGAAAAACGGATGATGCAATAAAAAAGGTGTAGTGTGCTTC  
AAGGACCATTAATACTAAATGGCAGCACTGGCTACGACACAAATGAACAGATAACACTAATCACTAACGGG  
AGCAGTTTGCATATCCAGATGAAATAAATCAGCAAGTTATGCGGACCCCATCAGTACAAAAGCATATA  
CAAATGATTTCGTAGTATACGACCCTGGGGAGCTTCGAGCAGCACAACCCTGTATGAACTGAATTCCTT  
GAGTGAAGTATCGAAAGAAATCATTACCCAGGGAGAATCTGCTTACTACGTGATAAAGAAGCTACCAGC  
GAACTCAAATCCCAAGTACACTGCAAACGCAGACGTCCATGTCCACCAACTCTCTCCTTATCTGATT  
TATCATCAGATTACCAGGAAGAGCAAATGAACAAATGCAAGTTAAACCAGATGTCCAAGTTGTACGACGA  
TGATGAACGTACTGATATTCAAAGTCACTACTGGAATGTGGTTAAGAAATTTGTGCGCATCCTTGTGTCC  
TCGGTTGCCTCAGAATATTTGGAATTTCTCTGGTCACTCTGGATGTATTTCTTGTGTTGTCGATCTAA  
ATGTCTCTGAAAAGAAAATTTATATTCCTTTGGACTATCGTTCCATTTCTTTAGCGATTGCTTTATTTTT  
CCTCGTGGATATTTCTTAGAGTGTCTGTAGAAGGGAGACGGCGCTATTTCTCTGACGACTGAACACC  
CTAGACGCTGTGGTCATCGGTGTGACTGTGGTTGTGGCTGTCATTTATGCACTTTATGACAAACACTTTC  
TCAGAGATATCCCAAGACTGGCAGTTTTACTGCGGCCTCTACGACTGCTCATTCTGATAAGGATTCTGCA  
ACTGGCTCATCAAAGAGACAACCTCGAAAGGCTGACCAGGAAGCTGGTATCGGGTAAACAGCGACGCTAC  
AGAAGGATGGCTTTGACCTAGACCTCACTTACGTCACGTGAGCGTATTATTGCCATGTCAATTCATCGT  
CTGGAAGGGAGTCCTTCTACAGAAATCCAATCAAGGAGTTGTGCGGTTCTGGATACCAAGCACCCAAA  
CCACTATCAAGTCTACAATCTATGCAGTGAGAGAGCTTATGACCCTAAGCACTTCCACTACAGGGTCCGC  
AGAATCATGATTGATGATCATAATGTCCCCACTTTGAGGAAATGTTGTTGTTCTCCAAGGAAGTAATA  
ATTGGATGGCTCAAGATCCTGAAAATGTTGTGCGGATTCACTGTAAGGGAGGAAAAGGAAGAACTGGAAC  
CATGGTGTGTGCCTGCCTCATTGCCAGTAAAATAGTTTTAAATGCAAAGGAAAAGTCTGTACTTTTTTGG  
GAGCGGCGGACAGATAAAAGCAACAGCTCGAAGTTCCAAGGAATAGAGACCCCTTCTCAGAATAGATATG  
TGAAATATTTGAAAACTGAAAATTAACACCAACTAACTCTCCCTCCCAAAAAAGTACTCGTGATAAA  
AAGATTGGTCGTTTATTCATTCATGGCGTTGGAAAAGGCGACGGGAGTGACCTGGAAGTACAAATCATA  
ATGTGGCAGGAGACTGTTTTTCTTTTGTAAATCCAGGAATTGTATGATATTTTCATGACCTGAAACAG  
ACAGAGCAATAATCAATGTGTTCCATTGCCCGCTCTATACGATGATGTGAAAGTAAAATTTCTCTCTCC  
GAATCTTCTAAATACTATGATGACTGCCCTTTTTCTTTTGGTTTCATACATCTTTTATAAAAATAAC  
AGGCTTTATCTACCAAGAAACGAATTGGATAATACCCATAAACCAAAAACATGGAAAATTTATGGTGAAA  
AGTTTGCAGTAGAGGTGGATTTTGGTGAGAAC

ACGCGTACGCGGCCGCTCGAG - GFP Tag - GTTTAA

Protein Sequence: >MG214933 representing NM\_199257  
 Red=Cloning site Green=Tags(s)

MYGEKKSHLYLWMEHYGYDMPANIYKMYSQPSRKTDANKKVSVSASRTIKLNGSTGYDTNEQITLITNG  
 SSL SYPDEIKSASYADPISTKAYTNDSSVYDPGGASSSTLYELNSLSEVSKEIITQGESALLRDKEATS  
 ELKIPSTLQTQTSMSNTLSLSDLSSDYQEEQMNKCKLNQMSKL YDDERTDIQKSYWNVVKKFVRLVS  
 SVAFRIFGIFLVILDVFLVVVDLNVSEKKIYIPLDYRSISLAIALFFLVDILLRVSVEGRRRYFSDVLNT  
 L DAVVIGVTVVAVIYALYDKHFLRDIPRLAVLLRPLRLILIRILQLAHQKRQLERLTRKLVSGNKRRY  
 KKDGFDDLTYVTERIIAMSFSSGRESFYRNP.IKEVVRFLDTKHPNHYQVYNLCSERAYDPKHFHYRVR  
 RIMIDDHNVPTEEMLLFSKEVNNWMAQDPENVVAIHCKGGKGRGTGMVCACLIASEIVLNAKESLYFFG  
 ERRTDKSNSSKFQGIETPSQNRVYKYFEKLIKINYQLTLPKKVLVIKRLVVYSIHGVGKGDGSDLEVQII  
 MWQETVFSFCNSRNCMIFHDPETDRAIINVHFCPALYDDVKVKFLSPNLPKYDDCPFFWFHTSF IKNN  
 RL YLPRNELDNTHKPKTKWIKYGEKFAVEVDFGEN

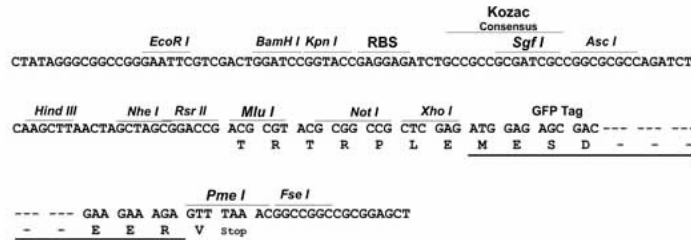
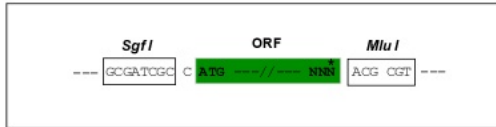
TRTRPLE - GFP Tag - V

Restriction Sites:

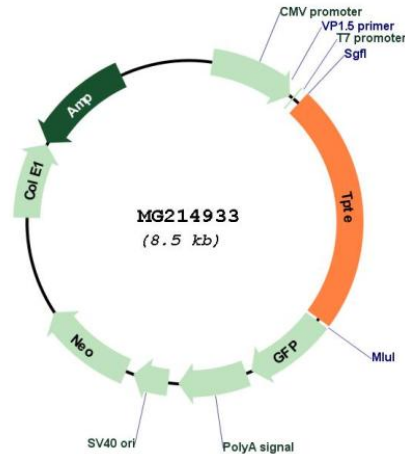
Sgfl-MluI

Cloning Scheme:

Cloning sites used for ORF Shuttling:



## Plasmid Map:



ACCN: NM\_199257

ORF Size: 1992 bp

**OTI Disclaimer:** The molecular sequence of this clone aligns with the gene accession number as a point of reference only. However, individual transcript sequences of the same gene can differ through naturally occurring variations (e.g. polymorphisms), each with its own valid existence. This clone is substantially in agreement with the reference, but a complete review of all prevailing variants is recommended prior to use. [More info](#)

**OTI Annotation:** This clone was engineered to express the complete ORF with an expression tag. Expression varies depending on the nature of the gene.

**Components:** The ORF clone is ion-exchange column purified and shipped in a 2D barcoded Matrix tube containing 10ug of transfection-ready, dried plasmid DNA (reconstitute with 100 ul of water).

**Reconstitution Method:**

1. Centrifuge at 5,000xg for 5min.
2. Carefully open the tube and add 100ul of sterile water to dissolve the DNA.
3. Close the tube and incubate for 10 minutes at room temperature.
4. Briefly vortex the tube and then do a quick spin (less than 5000xg) to concentrate the liquid at the bottom.
5. Store the suspended plasmid at -20°C. The DNA is stable for at least one year from date of shipping when stored at -20°C.

**RefSeq:** [NM\\_199257.2](#), [NP\\_954866.2](#)

RefSeq Size: 2549 bp  
RefSeq ORF: 1995 bp  
Locus ID: 234129  
Cytogenetics: 8 A2