

Product datasheet for **MG214930**

Pabpc6 (NM_001163836) Mouse Tagged ORF Clone

Product data:

Product Type:	Expression Plasmids
Product Name:	Pabpc6 (NM_001163836) Mouse Tagged ORF Clone
Tag:	TurboGFP
Symbol:	Pabpc6
Synonyms:	4932702K14Rik; AI428050; Pabpc3
Mammalian Cell Selection:	Neomycin
Vector:	pCMV6-AC-GFP (PS100010)
E. coli Selection:	Ampicillin (100 ug/mL)



[View online »](#)

ORF Nucleotide Sequence:

>MG214930 representing NM_001163836
 Red=Cloning site Blue=ORF Green=Tags(s)

TTTTGTAATACGACTCACTATAGGGCGGCCGGAATTCGTCGACTGGATCCGGTACCGAGGAGATCTGCC
 GCC**CGGATCGCC**

ATGAACCCAGCGACCCAGCTACTCTTTGGCTTCACTCTATGTGGGGACCTGCATCCCGACGTGACCG
 AGGCGATGCTCTATGAGAAGTTCAGCCCGCAGGGCCATCCTCTCCATCCGGGTGTACAGGGACAGGAT
 CACCCGCCGCTCGCTGGGCTACGCGTCCGTCACCTTCCAGCAGCTGGAGGACGCCGAGCGGGCTTGGAC
 ACCATGAATTTGACGTGATAAAGGGCAAGCCGGTTCGCATCATGTGGTCTCAGCGGGACCCGCTCGCTGC
 GCAAGAGCGGAGTAGGGAACATATTTGTAAAAATCTGGACAGATCCATTGACAGTAAAACGCTGTATGA
 TACGTTTTCTGCCTTTGGTAACATCCTTCTGTAAGGTGGTGTGTATGAGAATGGCTCCAAGGGTTAC
 GGCTTTGTACACTTCGAGACACAGGAAGAAGCTGAACGAGCAATTGAGAAAATGAACGGGATGTTCTTAA
 ATGACCACAAAGTGTTCGTTGGTCGCTTAAAGTCTCGTAGAGACAGGCAGGCTGAACTTGGAGCCAGGGC
 CAAGGAGTTCACCAATGTTTACATCAAGAATTTGGGAGAAGATATGGATGATGAGAGACTCCAGGATCTA
 TTTGGCAGATTTGGGCCCTGCCTTAAAGTGTAAAGTCATGACTGATGAAAAGTGAAAATCCAAAGGATTCG
 GATTCGTAAGCTTTGAAAGGCATGAAGATGCACGAAAGGCAGTGGAAAGAGATGAATGAAAAGACCTCAA
 TGGAAAACAAATTTATGTAGGTCGTCTCAGAAAAAGGTGGAACGACAGACTGAACTGAAGCACAAATTC
 GGGCAGATGAAGCAAGATAAGCACAAAAATGAACGGGTACCACAAGATAGAAGCGTCAGATGCAAAGGTG
 TTAACCTCTATGTGAAAAACCTTGATGATGGTATCGATGATGAGCGTCTCCGGAAGGAGTTTTCCCTTT
 TGGTACGATTACTAGTCAAAGGTAACGATGGAGGGTGGGCGCAGCAAAGGGTTTGGTTTTGTATGTTTT
 TCCTCTCCAGAAGAAGCCACAAAGCTGTTACAGAAATGAATGGTAAAAATAGTGGCCACCAAACTACTCT
 ACGTAGCTTTAGCTCAACGCAAAGAGGAGCGCCAGGCTCACCTCAGTAACCAAGTACATGAAAAGTATG
 AAGCACCAAGTCCCGGCCCTAACCCAGTCGTCAGCCCTTCCAGCCAGCGCAGGGGCCGTCAGGTTACTGC
 ATGACAGCTACACCAACTCAGAGCCGTAGGCATACTGTGCTCCTAATCAGACTACTCAGCAAGGACCAA
 GTGCCCGTGGGAGTGCTCACGGTACCAGAGCTCATCCATTCCAAAACATGTCTAGTACCATCCACCCATC
 ACATACTATGCCATCATTTAGTACTTCAGGACCCACTACCTCACAGGCTATACGACATCGTACTGCCAGC
 ACATCCACACAGATGATGGGCCACATCCTGCAGCTGCTGCTGCTGCAGCTGCTCCTGCCACCCGCA
 CAATTACCCAGTATAAATACTGCTGGAGTCCGAAATCCCCCTCAGCATCCTAATACACAGCCACATGT
 CAGCACGCAGCGGTCTGCTGTTCTGTCCAAGGTAAGAGTCTTTGACTGCCTCCATGTTGGCCTCTGCT
 CCTCCTCAAGCTCAAAGCAAATGTTAGGGGAATGGCTCTTCTCTTATTACAGCCATGCACCCTGCC
 TTGCTGGTAAAAACACGGGTATGCTGTTGGAAATGATAATATAGAGCTACGCCACATGCTTGAGTCTCC
 AGAGTGTCTCACACAAAGTTGATGAAGCCATAGCTGTACTGCAAGCTACCAAGCTAAAGAGACTTCA
 CAGAAAGCAGTCAGCAGTGTGCTGGTGTCCCAATGCT

AG**CGGACCG**ACGCGTACGCGGCCGCTCGAG - GFP Tag - GTTTAA

Protein Sequence:

>MG214930 representing NM_001163836
 Red=Cloning site Green=Tags(s)

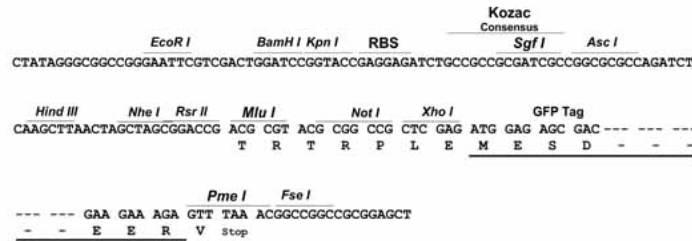
MNPSPSYSLASLYVGLHDPVTEAMLYEKFSAPGPILSIRVYRDRITRRSLGYASVNFQQLLEDAERALD
 TMNFDVIKGPVIMWSQRDPSLRKSGVGNIFVKNLDRSIDSKTLYDTFSAFGNILSCKVVCDENGSKGY
 GFVHFETQEEAERAIEKMNGMFLNDHKVFGVFRFKSRRDRQAELEGARAKEFTNVYIKNLGEDMDDERLQDL
 FGRFGPALSVKVMTDESGKSKGFGVVSFERHEDARKAVEEMNGKDLNGKQIYVGRAQKKVERQTELKHKF
 GQMKQDKHKIERVPQDRSVRCKGVNLYVKNLDDGIDDERLRKEFSFGTITSKVMEGGRSKGFVFCF
 SSPPEEATKAVTEMNGKIVATKPLYVALAQRKEERQAHLSNQYMQRMASTSAGPNPVVSPFQPAQGPSGYC
 MTATPTQSRRAYCAPNQTTQQGPSARGSAHGTRAHPFQNMSSSTIHPSTMPFSSTSGPTTSQAIRHRTAS
 TSTQMMGPHPAAAAAAAAAAPATRTITQYKYTAGVRNPPQHPNTQPHVSTQRSAPVQVKESLTASMLASA
 PPQAQKQMLGEWLFSLIQAMHPALAGKITGMLLEIDNIELRHMLESPECLHTKVDEAIAVLQAHQAKETS
 QKAVSSVAGVPNA

SGP**TRRRLE** - GFP Tag - V

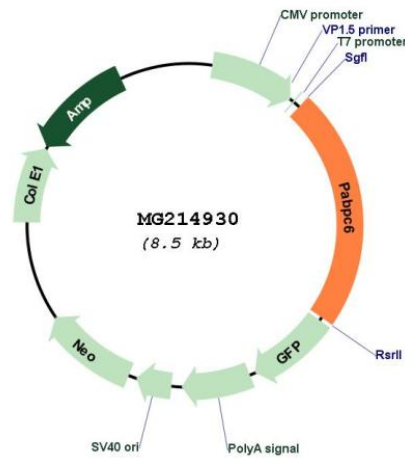
Restriction Sites: SgfI-RsrII

Cloning Scheme:

Cloning sites used for ORF Shuttling:



Plasmid Map:



ACCN: NM_001163836

ORF Size: 1929 bp

OTI Disclaimer:	The molecular sequence of this clone aligns with the gene accession number as a point of reference only. However, individual transcript sequences of the same gene can differ through naturally occurring variations (e.g. polymorphisms), each with its own valid existence. This clone is substantially in agreement with the reference, but a complete review of all prevailing variants is recommended prior to use. More info
OTI Annotation:	This clone was engineered to express the complete ORF with an expression tag. Expression varies depending on the nature of the gene.
Components:	The ORF clone is ion-exchange column purified and shipped in a 2D barcoded Matrix tube containing 10ug of transfection-ready, dried plasmid DNA (reconstitute with 100 ul of water).
Reconstitution Method:	<ol style="list-style-type: none"> 1. Centrifuge at 5,000xg for 5min. 2. Carefully open the tube and add 100ul of sterile water to dissolve the DNA. 3. Close the tube and incubate for 10 minutes at room temperature. 4. Briefly vortex the tube and then do a quick spin (less than 5000xg) to concentrate the liquid at the bottom. 5. Store the suspended plasmid at -20°C. The DNA is stable for at least one year from date of shipping when stored at -20°C.
RefSeq:	NM_001163836.1 , NP_001157308.1
RefSeq Size:	3208 bp
RefSeq ORF:	1932 bp
Locus ID:	67543
Cytogenetics:	17 A1