

Product datasheet for **MG214830**

Zfp882 (NM_001166645) Mouse Tagged ORF Clone

Product data:

Product Type:	Expression Plasmids
Tag:	TurboGFP
Symbol:	Zfp882
Synonyms:	ENSMUSG00000052439; Gm15468; OTTMUSG00000022410
Mammalian Cell Selection:	Neomycin
Vector:	pCMV6-AC-GFP (PS100010)
E. coli Selection:	Ampicillin (100 ug/mL)



ORF Nucleotide Sequence: >MG214830 representing NM_001166645, codon optimized.
 Due to the complexity of NM_001166645, the ORF clone is codon optimized for mammalian Expression.
 The nucleotide sequence differs from the reference sequence, yet the amino acid sequence remains identical.

Red=Cloning site Blue=ORF Green=Tags(s)

TTTTGTAATACGACTCACTATAGGGCGGCCGGAATTCGTCGACTGGATCCGGTACCGAGGAGATCTGCC
 GCCGCGATCGCC

ATGAGAGCGTGTCATTCGAGGACGTAGCTGTAACCTTACCGCCGAAGAGTGGGCTCTGCTGAATTCCA
 GCCAGAAAAGACTGCATCGGGACGTGATGCAGGAAACCTTCCGGAACCTCGCGCAATAGCAAAAAACA
 GGAGGACTGGATCTGGAGGATGGCAGTAAAAATCTCAGAAAGATCCCTCCATCTCTGTTCCAGACCGAT
 TACAAGCTGTGTGAATCACAGGAGTGTACCGAAAAGCCGGCACATGTAAGAAATGCGGGAAATTTTCA
 GCTCCCTCAGAGCTTTCTTGAGCAGTGAAGACACATAACGAAGAAAAGACATACAAATACAAGCAAAC
 CGAGGATTCATTTAGCCGCCATTCATTTGTGCAGGGACACGAGAGAATGCATGCAACAGAACAACCGTGC
 GTATTGAAGCAGTCCGGAAAAGATAGCTTGACCCTTGGCGGTATTCAGCAGCATATCATCACTCACAAAC
 GTGACGAGCCCTATATCTGTAAGTATGTGAAAGGCCCTTTATTCAAGTAGCTCATTCTGACCCATAA
 GCGGACACATACCGAGAGCAGCTCTACATATGTAACAGTGCAGGAAAGACCTTACGTATTCATCCGGC
 CTCCGAAGACACGAGAGAACACATAGTGGAGAAAAGCCCTACGAATGTAACAGTTCCTGAAAGTGTTC
 CCTCTCTGAGGAAGTTGAGTCACATGAGCAGACGCACAATGGTATCAAGTACATTTGTAACCAATGCGG
 CATCGCCTTACGCGACCACTGCTCACTCCAGTGTACGAAAAGATCCATAGCCTGAAAAGCCTTACGTC
 TACAAACAGTGTGGGAAAACCTTTACTGTCTAGTGCCTCCGCCGACACGAGAGGATCCATACTGGCG
 TTAAGCCTTACGAATGTAAGGTCTGTGGCAAGGCTTTCATAGACTGTTCTTCCCTGCAGTGTACAGAGAG
 GATCCATAGTGGTGAAGAACCGTATGTTTGAATTTGTGCGGTAAGGCATTAGTCCGCCAGGGCAGCCCT
 AAATGTCACGAACGGATCCATTCAGGCGAAAAGCCATACGCTGCAACAGTGTGGGAAGGCTTTCATGC
 ATCATAACGCGCTGAGATATCATGAACAAATTCACCGGGCGAGAAAAGCTTACGCTGTAAGCAGTGTGG
 AAAGGCATTTGTCTGTCTTCTGCACTGAAGAAGCATGAGCGGATACATTCTGGTCTGAAGCCTTGTCTG
 TGTAGAGTCTGTGGAAAAGCCTTACATTCACCTCATCACTGCATTGCCATGAGAGGACCCACACTGGAG
 AAAAGCCTTACGTGTGTAAGCAGTGCAGGAAAGCCTTATGTACCCTCCTCCCTCCGGTCCACAGAA
 CATACACTAGCCGAGAAGCCCTACGTGTGTAAGCTGTGTGGAACAGCTTTCACCTACCCTCCTCCCTG
 CAAAGACACGAGAGGATCCACAGGGGGAAAAGCCTTACGTCTGCAAGTTCTGTGCCAAGGCTTTCACCG
 ACCACTCAAGCCTCCGATGCCATGAGAGAATTCATACCGGAGAAAAGCCTTACGTGTGTAAGCAATGTGG
 AAAAGTTATTCTACACACGGATCCCTGAGGTATCACGAAAAGGTGCATTGCGTG

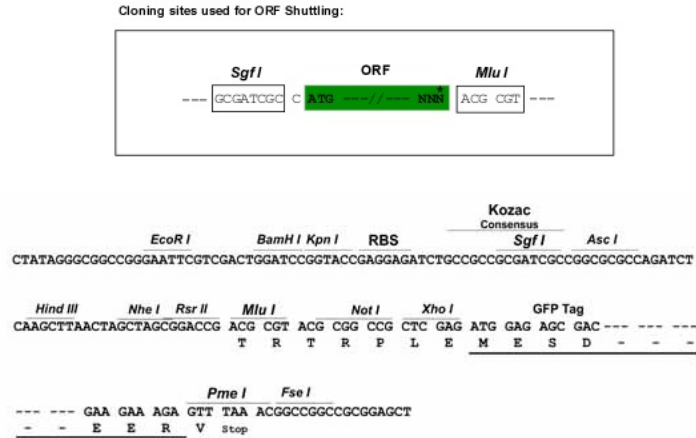
ACGCGTACGCGGCCGCTCGAG - GFP Tag - GTTTAA

Protein Sequence: >MG214830 representing NM_001166645
 Red=Cloning site Green=Tags(s)

MESVSFEDVAVNFTAEEWALLNSSQKRLHRDVMQETFRNLAAIAKKQEDWILEDGSKNLRKIPPIISVQTD
 YKLCESEQECTEKPGTCKKCGKFFSSPQSFLEHMKTHNEEKYKYKQTEDSF SRHSFVQGHM HATEQPC
 VLKQSGKDSL TLAGIQQHI ITHNGDEPIYCKVCGKAFYSSSSFL THKRTHREQLYICKQCKFTYSSG
 LRRHERTHS GEKPYECKQFLKVFPSLRKVESHEQTHNGIKYICNQCGIAFSDHCSLQCHEKIHSLKPYV
 YKQCGKFTFTCSSALRRHERIHTGVKPYECKVCGKAFIDCSSLQCHERIHSGEKPYVCKL CGKAFSRQGS
 KCHERIHSGEKPYACKQCGKAFMHHNLRHYHEQIHRGEKAYGCKQCGKAFVLSALKKHERIHSGLKPC
 CRVCGKAFTFHSSLHCHERTHTGEKPYVCKQCGKAFMYHSSLRCHENIHSAEKPYVCKL CGTAFTYHSSL
 QRHERIHRGEKPYVCKFAKAFDTHSSLRCHERIHTGEKPYVCKQCGKSYSTHGLRHYHEKVHCV

TRTRPLE - GFP Tag - V

Restriction Sites: SgfI-MluI

Cloning Scheme:


ACCN: NM_001166645

ORF Size: 1665 bp

OTI Disclaimer: The molecular sequence of this clone aligns with the gene accession number as a point of reference only. However, individual transcript sequences of the same gene can differ through naturally occurring variations (e.g. polymorphisms), each with its own valid existence. This clone is substantially in agreement with the reference, but a complete review of all prevailing variants is recommended prior to use. [More info](#)

OTI Annotation: This clone was engineered to express the complete ORF with an expression tag. Expression varies depending on the nature of the gene.

Components: The ORF clone is ion-exchange column purified and shipped in a 2D barcoded Matrix tube containing 10ug of transfection-ready, dried plasmid DNA (reconstitute with 100 ul of water).

- Reconstitution Method:**
1. Centrifuge at 5,000xg for 5min.
 2. Carefully open the tube and add 100ul of sterile water to dissolve the DNA.
 3. Close the tube and incubate for 10 minutes at room temperature.
 4. Briefly vortex the tube and then do a quick spin (less than 5000xg) to concentrate the liquid at the bottom.
 5. Store the suspended plasmid at -20°C. The DNA is stable for at least one year from date of shipping when stored at -20°C.

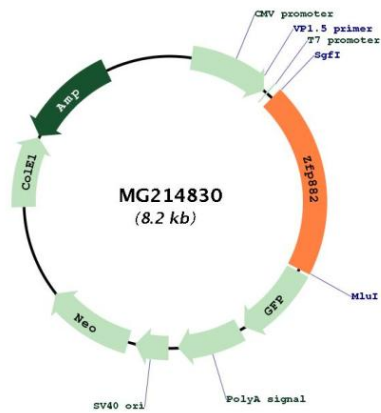
Note: Plasmids are not sterile. For experiments where strict sterility is required, filtration with 0.22um filter is required.

RefSeq: [NM_001166645.1](#), [NP_001160117.1](#)

RefSeq Size: 5651 bp

RefSeq ORF: 1668 bp
 Locus ID: 382019
 Cytogenetics: 8

Product images:



Circular map for MG214830