

Product datasheet for **MG214820**

Vmn2r89 (NM_009486) Mouse Tagged ORF Clone

Product data:

Product Type:	Expression Plasmids
Tag:	TurboGFP
Symbol:	Vmn2r89
Synonyms:	V2r10; V2r11
Mammalian Cell Selection:	Neomycin
Vector:	pCMV6-AC-GFP (PS100010)
E. coli Selection:	Ampicillin (100 ug/mL)

ORF Nucleotide Sequence: >MG214820 representing NM_009486
Red=Cloning site Blue=ORF Green=Tags(s)

TTTTGTAATACGACTCACTATAGGGCGCCGGGAATTCGTGACTGGATCCGGTACCGAGGAGATCTGCC
GCCGCGATCGCC

ATGAAGAAGCTCTGTGCTTTCCTACTATTTTCATTTTTGTCTCTGAAGTTTTCTCTCATCTTGTGCTGTTTGA
CTGAAGCAAGTTGCTTTTGGAGGATAAAGAATAGTGAAGATAGTGTGAGATTTGCAAAGAGAATGTCA
TTTTACCTTTGGGTAATTGATAAACCTATTGAAGATAATTTTTATAATTCAGTTTTAAATTTTGAATA
TCAGCAAGTGAATATGAGTTTCTTCTGGTAATGTTTTTGTCTACTGATGAGATCAACAAGAATCCTTATC
TTTTACCCAACATAACTTTGATATTACGCATCGTTGGTGGTCACTGTCATGATTTATTGAGAGGTCTGGA
TCAATCATATACACAAAATAATGGACGTGTGAATTTTGTAAATTTTCTGTTATTTAGATGATTCATGT
AACATAGGCCCTTACAGGACCATCATGGAAAAATCCTTAAACTGGCAATGGATTCTTCAATACCAATGG
TTTTCTTTGGACATTTAATCCTAACCTACGCGACCATGACCGGCTGCCCATGTCCATCAGGTAGCCCC
CAAGGACACACATTTATCCCATGGCATGGTCTCCTTGATGTTTTATTTTATGATGGACTTGGATAGGACTG
GTCATCTCAGATGATGACCAGGATTCAGTTTCTCTCAGATTTAAGAGAAGAAAGCCAAAGGCATGGGA
TCTGTTTAGCTTTTGTAAATATGATCCCAGAAAACATGCAGATATACATGACAAGGGCTACAATATATGA
TAAACAAATATGACATCTTCAGCAAAGGTTGTATCATTTATGGTGAATGAACCTACTCTAGAAGTA
AGCTTCAGAAGATGGGAAGATTTAGGTGCTCGGAGAATCTGGATCACAACCTCACAATGGGATATCATAT
TAAATAAAAAAGAATTCCTCTTAATCTCTTCCATGGCCCTATCACTTTTGCACACCACAAAGTTGAGAT
TCCTAAATTAAGGAATTTTATGCAAACAATGAACACTGCCAAATACCCAGTAGATATTTCTCATACTATA
CTGGAGTGAATATTTAATGTTCATCTCTAAGAACAGCAGTAAAAATGGATCTTTTACATCCAACA
ACACATTGGAATGGACAGCACTGCACAACATATGATATGGCCATGAGTGATGAAGGTTACAATTTGTATAA
TGCTGTTTATGTTGCGGCCACACCTACCATGAACACATTCTTCAACAAGTAGAGTCTCAGAAAAAGGTA
GAACACAACAGATATTTCACTGTTTGTGTCAGCAGATA

ACGCGTACGCGGCCGCTCGAG - GFP Tag - GTTTAA



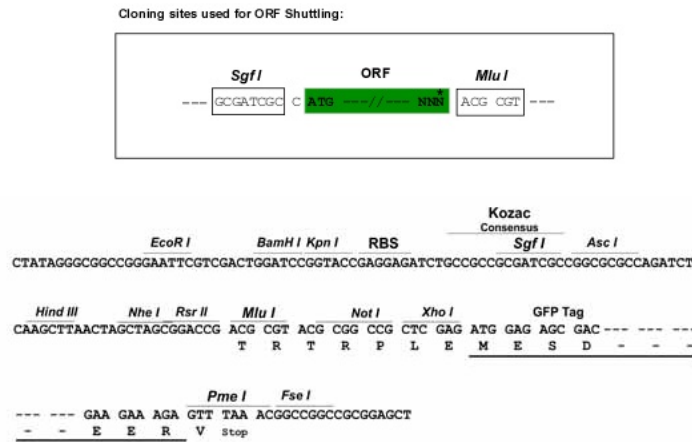
Protein Sequence: >MG214820 representing NM_009486
 Red=Cloning site Green=Tags(s)

MKKLCAFTISFLSLKFSLILCCLTEASCFWRIKNSDSDGDLQRECHFYLWVIDKPIEDNFYNSVLNFRISASEYEFLLMFFATDEINKNPYLLPNITLIFSIVGGHCHDLLRGLDQSYTQINGRVNFVNYFCYLDSDCNIGL TGPSWKSLKAMDSSIPMVFVFPNPNLRDHDRLPHVHVQVAPKDTLHSHGMVSLMFHFRWTWIGLVI SDDDDQGIQFLSDLREESQRHGICLAFVNMIPENMQIYMTRATIYDKQIMTSSAKVVIY GEMNSTLEV SFRRWEDLGARRIWITTSQWDIILNKKEFTLNLFHGPITFAHHKVEIPKLRNFMQTMNTAKYPVDISHTILEWNYFNCSISKNSSKMDLFTSNNTLEWTALHNYDMAMSDEGYNLNAVYVAAHTYHEHILQQVESQKVEHNRYFTVCQQI

TRTRPLE - GFP Tag - V

Restriction Sites: SgfI-MluI

Cloning Scheme:

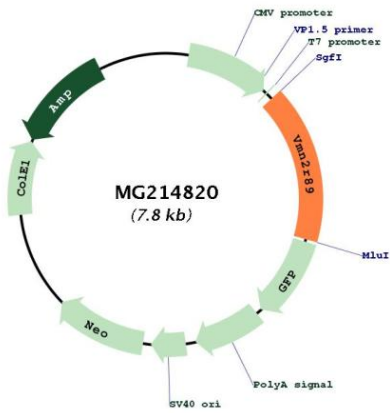


ACCN: NM_009486

ORF Size: 1296 bp

OTI Disclaimer:	<p>Due to the inherent nature of this plasmid, standard methods to replicate additional amounts of DNA in E. coli are highly likely to result in mutations and/or rearrangements. Therefore, OriGene does not guarantee the capability to replicate this plasmid DNA. Additional amounts of DNA can be purchased from OriGene with batch-specific, full-sequence verification at a reduced cost. Please contact our customer care team at custsupport@origene.com or by calling 301.340.3188 option 3 for pricing and delivery.</p> <p>The molecular sequence of this clone aligns with the gene accession number as a point of reference only. However, individual transcript sequences of the same gene can differ through naturally occurring variations (e.g. polymorphisms), each with its own valid existence. This clone is substantially in agreement with the reference, but a complete review of all prevailing variants is recommended prior to use. More info</p>
OTI Annotation:	<p>This clone was engineered to express the complete ORF with an expression tag. Expression varies depending on the nature of the gene.</p>
Components:	<p>The ORF clone is ion-exchange column purified and shipped in a 2D barcoded Matrix tube containing 10ug of transfection-ready, dried plasmid DNA (reconstitute with 100 ul of water).</p>
Reconstitution Method:	<ol style="list-style-type: none">1. Centrifuge at 5,000xg for 5min.2. Carefully open the tube and add 100ul of sterile water to dissolve the DNA.3. Close the tube and incubate for 10 minutes at room temperature.4. Briefly vortex the tube and then do a quick spin (less than 5000xg) to concentrate the liquid at the bottom.5. Store the suspended plasmid at -20°C. The DNA is stable for at least one year from date of shipping when stored at -20°C.
Note:	<p>Plasmids are not sterile. For experiments where strict sterility is required, filtration with 0.22um filter is required.</p>
RefSeq:	<p>NM_009486.3, NP_033512.1</p>
RefSeq Size:	<p>2731 bp</p>
RefSeq ORF:	<p>1299 bp</p>
Locus ID:	<p>22301</p>
Cytogenetics:	<p>14 C1</p>

Product images:



Circular map for MG214820