

Product datasheet for **MG214792**

4930595M18Rik (NM_173435) Mouse Tagged ORF Clone

Product data:

Product Type:	Expression Plasmids
Tag:	TurboGFP
Symbol:	4930595M18Rik
Synonyms:	RP23-217L21.2
Mammalian Cell Selection:	Neomycin
Vector:	pCMV6-AC-GFP (PS100010)
E. coli Selection:	Ampicillin (100 ug/mL)



ORF Nucleotide Sequence: >MG214792 representing NM_173435
Red=Cloning site Blue=ORF Green=Tags(s)

TTTTGTAATACGACTCACTATAGGGCGCCGGGAATTCGTGCGACTGGATCCGGTACCGAGGAGATCTGCC
GCCGCGATCGCC

ATGTGTTGCTCTCATGCTCTTCTCAATGTAGATGGAATGACCTGCCTCAAGTTGAAAACCTGGCACACC
ACACTTCATCTTACTTTGAAGCACGTCTTTGAGGATTATGGACCTCTTGGTGATGTATACATACCCCG
AAATCACTTAACTGAAGAGCACTATGGCTTTGCCTTCACTTTCTACAACAATGTGATGCCAATGAT
GCCTTACATCCCTAAATGGATTTTACTGGATGGTTGAACTGAAGGTACAGATGGTGTACAATGATG
ATCCACATTATGCTCAACCCGATTGTAGCTCGGGAAGGCAATACCAAGTACAAGGAAGAAAACCATGACCT
TCAGAGCGAATGCCAAAGACAGCATTCTTCCAACACCAGAATCCAACCCAGATCTCACAGCAGATCTTCT
GGAGACGACTCAGAATCAAACTCTCAATCTTCTAATCACTTGCATAGAAGATCATCATCAACCAGATTCA
AGACCCAGTCTTCAAGTCTACTCAACAACGCAACAGGGCCTGTCCAAGTCCAAAAACCTTCCAGG
AAAAAGAAGAAAACCAAACTAAATCTTCATATAAGAGTGCCTCAAGTATCTTCCAGGAGGAGACTT
CTTGTGGGAGAAAACCTGGAGAACCAACAGAGGCAAGTGGAAAATGGACAATCCAATCTATGTTTGAAA
AACCATGTAGAACAAAAGTAAATGCAACTCACACATTGATAACACGTCCATCTACCAGAAGTCAGACAAG
AAAAAGATTAAAGGCCCAAAAATCAAGTAAAAATCAAAAGTTGGAAAAGAAAATATGCAGAAAATAAA
GAAAGGCAATGGAATATCCACAGTCTCCATCAATAATTAACAAAACATATTTATCAAAAGAAAATGAAC
CTGAAATATTGACAGTATATGATAGAACTCAGAGAAGAACAAAGAAGGAGGAGCCAAAGGACTTCCAAGATC
CAACAACCTCGAATAGATGTGGAGCAAACTGCAGATGTTTTGCATAGTGTGACTCTGAAAACGGCCAA
CTTAACTCCCTACAACAATCTGAAAAGAGAACAAAATGGGGATAGAGGAGTGTGGTTTTGGACAGCAA
ACTGTCAGGGTAACTCAAGCAATGATCACTGGTAGGATGAGATTTACCTGTATAAAGGGAACACAAT
TCCACAAAATGGCCTTTAGGGCTTAGCTGTCATGACAGTAACAGGAAAATCCATAAGCAATTAGACTAT
CAAGAACTTGAGTCAATGCATGTAACCTCCATTTACACAAGAAGAAAATATAACTGAAGTTTTAATGGAAG
ACACATGTAGTAAAGAAACAAGTACTAGACGAAAGACTCCAGACATTCTGACACTTAAAGAAAACAATTGA
AAGTAGTTACATCCAGATACCAAGGATGTGGCACTGGGGGACCTCATTATTGTTTTACTTTGAAACT
TTTGAAGACTTTAGGAAGGATAAGGCTTACATTTTTTCTAATAGTCACACATTTTTACCATTGAGAGACA
ATTTAGCCATATCTGAGTTGCAAAAATATATTTCTTTCCATCATTCCAAACATAGAACACATATTGAC
AGAGAGCACTGCTCATAGAAGTCAGTCTACATCTGTAACACCAACTAAGTTTACCCTGTGGAAATTTGAT
CAAAAAGAACACAAAAGACCTCTTCATGTTCTAACCAGACAGATATACAATTTCTGACGTAATTTCTG
ATGATGAACTTTAAATACTAATTTAGAATGTACAATACCTTCAGCTCCTTGTGAAACATCAGGGAACAT
CATGCTAGGAGTTTTGAGGTAGATGATAATTTCACTGAGTTTGACTTACAATCTTGTGACTCATTGTCA
AGTCAAAAATAAGAAAGAGTTCATTCTGGCCACAGTAGAATTTCTAGATCTGTTCCAGCTTAAATTCAA
ATTTCTACCCTAGTTCTAGTACAAATCACTCATTCTTTCTTTTAAATTAACAGTCAACAGTTTTTACC
TGTTTTCTAGTACGAGTGACAATATTATTGGCAATGACATAAAATTTGCCACATACCTCACAAATTAATCAA
GAAAGCAATGAATTCATTGTATTTAATTGCCACCTTTTGGAGCCAGGCAACAATGCATGTTACAAGCC
CAGAAACATCTAATGATAGTATTATTGGCCAGTTTTGCCTGATTTTTCAAACTTCAATGATATTATAA
TAACCACCTAAAAGGACTTACCGAAGAACAGATTAATAATTTACCAGTAATTTATTTTGTGAAAATGAT
GAAATAAGCCACTGCAGTATTTGTCTTACACAATACATAAAAAACAGTAAGATCCGTGTACTACCTTGCT
TTCATGAATATCATGATAAATGATTTGATCGCTGGCTGTCTGACAACCTCTACCTGTCCTATTTGTGCGAA
ACATATAATAAATCTGATGACACAGAATTTCTATTT

ACGCGTACGCGGCCGCTCGAG - GFP Tag - GTTTAA

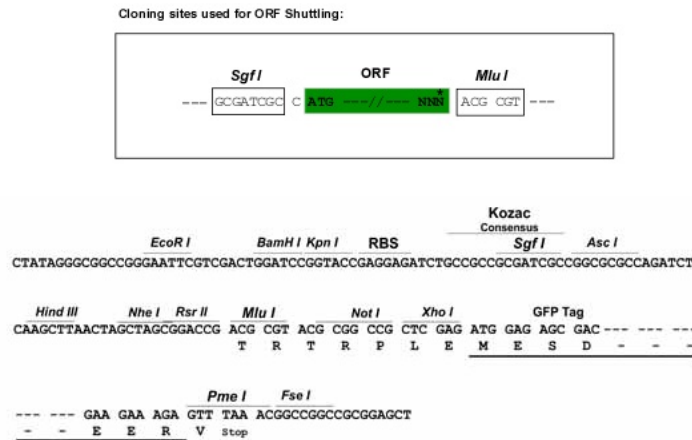
Protein Sequence: >MG214792 representing NM_173435
 Red=Cloning site Green=Tags(s)

MCCSHALLNVDGMTCLKVENLAHHTSSYTLKHFVEDYGPLGDVYIPRNHLTEEHYGF AF IHFYNKCDAND
 ALHSLNGFLLDGCKLKVQMVYNDDPHYAQPDCSSGRQYQYKEENHDLQSECERQHF SNTRIQTRSHSRSS
 GDDSEFKSQSSNHLHRRSSSTRFKTQSSVSTQQLPNRACPKSKNLPKGGKKPKPKSSYK SASKYPSGGGL
 LVGEKLENNQRQVENGQSNMF EKPCRTKVNATHLITRPSSTRSQRKRLRSPQNSSENSKLERKYAENK
 ERQMEYQPSPSIIKKTYLSKEIEPEILTVYDRTQRTRRRSQGLPRSNNSNRCGANTADVLHVSVDSESGQ
 LNSLQQSEKRTKMGIEECGFWTANCQGNSSNDITGRMRFTCNKGN TIPQNLGSLSCHDSNRKIHKQLDY
 QELES MHVTPFTQEGNITEVLMEDTCSKETSTRKTPDILTLKETIESRLHPDTKDVALGGPHYCLSLET
 FEDLRKDKAYIFSNHTFLPLRDNLAISELQKLYFFPSFPTIEHILTESTAHR SQSTSVP TKFTTVEID
 QKEHTKTSSCSNQTDIQISDVISDDETLNLECTIP SAPCETSGNIMLVFVEVDDNFTEFDLQSCDSL
 SQNNRRVHSGHSRISRVSLSNSNTSSSTNHSLLSLLNYSQQFLPVSSTSDNIIGNDINLPHTSQINQ
 ESNEFIVFNCPPEARQMHVTS PETSNDSDYWPVLPDFSNFNDIHNHPKGLTEEQINNLPIVYFCEND
 EISHCSICLTQYIKNSKIRVLP CFHEYHDKCIDRWLSDNSTCPICRKHIINSDDTEFLF

TRTRPLE - GFP Tag - V

Restriction Sites: SgfI-MluI

Cloning Scheme:



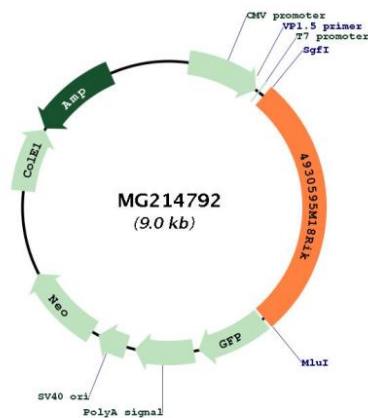
ACCN: NM_173435

ORF Size: 2487 bp

OTI Disclaimer: The molecular sequence of this clone aligns with the gene accession number as a point of reference only. However, individual transcript sequences of the same gene can differ through naturally occurring variations (e.g. polymorphisms), each with its own valid existence. This clone is substantially in agreement with the reference, but a complete review of all prevailing variants is recommended prior to use. [More info](#)

OTI Annotation: This clone was engineered to express the complete ORF with an expression tag. Expression varies depending on the nature of the gene.

Components:	The ORF clone is ion-exchange column purified and shipped in a 2D barcoded Matrix tube containing 10ug of transfection-ready, dried plasmid DNA (reconstitute with 100 ul of water).
Reconstitution Method:	<ol style="list-style-type: none">1. Centrifuge at 5,000xg for 5min.2. Carefully open the tube and add 100ul of sterile water to dissolve the DNA.3. Close the tube and incubate for 10 minutes at room temperature.4. Briefly vortex the tube and then do a quick spin (less than 5000xg) to concentrate the liquid at the bottom.5. Store the suspended plasmid at -20°C. The DNA is stable for at least one year from date of shipping when stored at -20°C.
Note:	Plasmids are not sterile. For experiments where strict sterility is required, filtration with 0.22um filter is required.
RefSeq:	<u>NM_173435.3</u> , <u>NP_775611.2</u>
RefSeq Size:	2645 bp
RefSeq ORF:	2490 bp
Locus ID:	245492
Cytogenetics:	X B

Product images:

Circular map for MG214792