

Product datasheet for **MG214787**

BC005561 (NM_001166581) Mouse Tagged ORF Clone

Product data:

Product Type:	Expression Plasmids
Tag:	TurboGFP
Symbol:	BC005561
Mammalian Cell Selection:	Neomycin
Vector:	pCMV6-AC-GFP (PS100010)
E. coli Selection:	Ampicillin (100 ug/mL)

ORF Nucleotide Sequence: >MG214787 representing NM_001166581
Red=Cloning site Blue=ORF Green=Tags(s)

TTTTGTAATACGACTCACTATAGGGCGGCCGGAATTCGTCGACTGGATCCGGTACCGAGGAGATCTGCC
GCCGCGATCGCC

ATGGCGATGACCTCGACAACCTGTAGTGGTTCTGCAGAGTGGATCAAGACCTGGGAAAAATCTGGGAGAG
GCGAGTTTTGCGTTTGTGCCGATTCTCAGTAAAAGTAAAAGCCGAGACACTTTTGCTTGGAGAGATTT
CCAACAAGCACTCTATGAGTTGTACACCATGTCAATTAAGGAACCTTTAAAGCCGAACAGGCTCAAAT
GTTCTTAATGACATCAGTGAATTCGAGAAGATATCCATTTATTCTTGCTGATATATTCTGCATATTAG
ATATTGAGACGAATGTCTAGAAGAAAAAGCAAAAGAGATCATTTTACACAACCTGATATTAGCATGTTT
ATATTTAGTCTCAGACACAGTTCTAAAGGAACGCTTGGATCCAGAAACATTGGGGTATTGGGCTTATC
AAACAATCGCAGCAGTTCAATCAAAAATCAGTTAAGATCAAAACGAAACTCTTCTATAAACAGCAGAAAAT
TCAATTTGCTAAGAGAAGAAAAATGAAGTTATGCCAAGCTGATTGTTGAATTAGGGCAAGATTTATCTGG
AAATACACTAGTGATTTAATCTTAGAAATCTCAAATCTTTAATAGGGTCTTTAATCTAGATCCCAAT
AGAGTTTGGATATCATTTTAGAAGTGTGTAATGCAGGCCAGAACACCATGATTTCTTTATATCTTTAT
TAGAAGCTTATATGAGTATGTGTGAACCACACACACTGTGTCAATTTCTGGGTTCAAATCAAGTTTTA
CCAGGAGCCAAATGGTGAGACCCATCTTCTTGTATAGAGCTGCAGCAGTGCTCCTGCAGTTTAACTT
ATCGATTTGGATGATCTCTATGTGCACCTTCTCCAGCTGATAGCTGCATTGTGAGTGAATACAAACGGG
AAATTTGGGAAGCTAAGCAAAATGTTAAAAAATACAATGGTTGATTGCCTCCGAAAAAAGTGATGA
ACGAGAAAAAGAAAAAGAAAAAGATGATAAGGTAGAGAAGGCCCTGACAACCAAAAACTTGGTTTGTGG
GAAGCCTTGTAAATTATTGGTGATTGGAACATGCACAAAGTATTATGGACCATATGCCTCCATACTATG
CAACATCACATAAAGTAATAGCCCTTGCTATTTGCAATCTTATACACATAACTATTGAGCCTATTTACCG
AAGAGTTGGTCCCTAAAGGTGCCAAGGCTCACCTGTCAATGCTTTACAAAACAAGAAGGCCAAAG
CAAGCAGAGAGCTTTGAAGACTTAAGGAGAGATGATTCAGTATGTTCTATTACCTTGGTCCCTCACCTTT
CTCATGATCCCATCTTATTGCAAAGGTTGTGCGCATAGGCAAGTCATTTATGAAGGAATTCAGTCTGA
TGGGAAACAAGAAAAATAAGAGAAAAATGGAAGCTATTCCTAGTTGTTTGGCTTAGCGTTACTGACCAGGTA
CTGCTTCTTCTCTTTCTTAAATGGATTGCAATGCGTGCATGTCTGAGGAACTATGGGGAATGTTAAAA
CATTTCCCTTACAACATAGATATCGCTTATATGGACAGTGGGAAGAAATGAGACTTACAACAGCCATCCACT
TTTAGTGAAAGTTAAAGCTTATACAATAGATCGAGCCAAATACATCATGAAGCGCCTAACAAAGAAAAAT



GTGAAGCCTTCAGGAAGACAGATTGGGAAATTGAGCCACAGTAATCCAACCATTTTGTGTTGATTATATCT
TGTCACAAATACAGAAGTATGATAACTTAATAACCCCTGTGGTAGACTCATTGAAATACCTCACTGCGTT
GAATTACGATGTTTTAGCCTATTGTATCATTGAAGCACTAGCTAATCCAGAAAAAGAAAGGATGAAACAT
GATGACACAACCATCTCCAACCTGGCTTCAGAGTCTGGCTAGTTTCTGTGGTGCAAGTTTTTCGTAAATACC
CAATTGATCTTGCTGCTTCTTTCAGTATGTAGCCAATCAGTTAAAGGCAGGCAAAAGTTTTGATCTACT
TATATTGAAAGAAGTAGTACAAAAATGGCAGGAATAGAAGTTACAGAGGAAATGACAATGGAGCAGCTT
GAGGCTATGACAGGTGGGGAACAACGAAAGCTGAAGGTGGATATTTGGCCAGATTAGAAACACAAAA
AATCCTCTCAGAGATTAAGGATGCACTACTGGACCATGATCTTGCCCTTCTCTTTGTTGCTCATGGC
ACAGCAAAGGAATGGGGTGATATTTTCAGGAAGGCGGAGAGAAAACATTTGAAACTTGTGGGAAAGCTATAT
GACCAAGTGTGATACCTTGGTACAGTTTGGTGGGTTTTAGCATCAAATCTAAGCACAGATGATTACA
TAAAGAGAGTTCCCTCAATTGATGTGCTTTGTAATGAATTTACACACCCCATGATGCAGCATTTTTTCT
GTCTCGGCCAATGTATGCACACCATATTTTCATCAAAGTATGATGAACTTAAGAAATCAGAAAAGGGTAGT
AAGCAGCAACATAAAGTTCATAAGTACATTATGTCATGTGAGATGGTGTGGCTCCTGTCCATGAAGCAG
TGGTCTCGTTACATATCTCAAAGTCTGGGACGATATCAGCCCTCAGTTCTATACCACATTTGTTCTCT
GACCATGTATGACCTTGCAGTCCACATACCAGCTATGAACGGGAAGTCAATAAACTGAAGATCCAAATG
AAAGCAGTTGATGACAGTCAAGAAATGCCTCTAAATAAAAAAGAAAAGGAGAAAAGAGCGCTGCATGCCT
TGCAGGACAAGCTTCTTGAAGAGGAGAAGAAACAGACGGAGCATGTACAGCGAGTTCTACACAGGCTGAA
ATTAGAAAAGGACAACCTGGCTCTAGCAAAATCTACTAAAAATGAGACCATCACAAAATTTCTCCAGTTG
TGTATATTTCTCGATGATTTTTTCAGCAATTGATTCTGTTACTGTGCTCATTTTGTTGAGTTAGTCC
ATCAACAGAAAGACTCCAAATTTTTCCACACTTCTTGTCTATGACCGAGTTTTTCAGACATAATTTACAT
GGTTGTAGCTTTACTGAAAATGAAGCTAGTTCGATATGGGAGATTTCTTGTGCTGATGTTAGAGACTGTG
ACTAGGTGGCAGCGACAGATCTACCTATGAGAAGGAATGTGAAACTATCCAGGATTCCTTACTATAT
TACGAGCAACTGGATTTGATGGTGGAAATAAAGCTGATCAGCTAGATTATGAGAATTTTCGACATGTTGT
ACATAAATGGCATTACAACTAACCAAGGCATCGGTACATTGCCTCGAAACAGGTGAATATACACATATC
AGGAATATCTTGATTGTACTAACAATAACTACCATGGTACCCCAAGTTTTAAATCTGGGTGAGGCTT
TGGAAAGAGAGTGCATAAAATCTGCCAAGAAGAAAAGAAAAGAAAACAGATCTATATGCATTAGCAAT
GGTCTACTCTGGGCAGCTGAAAAGTAGAAAGTACATACATGATACCTGAAAATGAATTTTCATCACAAAGAC
CCTCCTCCAAGAAAATACTGCTACCAATCTACAACCAAGTGGGCCTTGATGTGGGCTGCCTTCATCTATAG
GAAGTATGTGATAAATTAGATGAGAGCAGTCTGAGGAGGCCGACAAATCACGAGAAAGAGCTCAGTGTGC
TGTGAAAGCTGCTAATAAAGCTTCCAGTGTACACACAAAAGGGAATTTAAGCAATGGAACAGTGGCTCT
AACAGCAAAGCTGTTAAGGAAAATGACAAAGAAAAGGCAAGAGAAAGAGAAAAGAAAAGAAAAGAA
CCCCAGCTGTTACTCCAGAGGCCAGGGTACTTGGTAAAGACAGTAAAGAAAACCAAGGAAGAAACAACC
AAATAAAGATGAAAAATAAGAGAAGCCAAAGAAAAGAAATGCCTAAATCTGATAAAGACAAGGAAAAATTA
AAGAAGGAAGAAAAGCTAAAGATGAGAAATTCAGGATCATTTGTTGCCAATGTAGAATCAAATCCACTC
AAGAAAAGGAAAAGAGAAAAGAGCCCTCAAAGAAAAGAGATTTAGCAAAGGAAATGAAGTCAAAGAGAA
TGTTAAAGGAGGGGAAAAGCACCAGTTTCTGGCTCCTTGAATCACCTATTTCCCGAACAGATATCAC
GAACCTGAAAGAGAAAAACGTCGAAAAGTTGATTTCCATCCTTCTCCATCACACTCTTCCACAATAAAGG
ACAGTCTTGTCAAATTAAGGAATCTTTCAGCAAAGCTCTATATCAACCATATCCACCACACTACTGTCAA
GAGTAAAGAGAGAGAAGCAGACAAGAAAGATTTGGACAAGTCAAGGAAAGATCCAGAGAAAGAGAGAAA
AAAGAGGAAAAGGACAGGAAAGAGCGGAAAAGAGATTATCAACAATGACCGAGAGGCACCTTGGACT
TAATCAAGAGGCGGAAAAGATGAAAATGGAATATTGGGGTTTCAAACACAAAAGTGAAGTCCCTGTGA
GTCTCTTTATCAAATGAGAAAAGACAAGGAAAAATGAAGTCAAATCCTCAGGCAAGAAAAGGTTGAT
TCATTTAAACCTGAAAAGATAGATAAAATATCCAGTGGGAAAAGGAGTCCGGACATGATAAGGAAAAGA
TAGAGAAGAAAAGAAAATGGGATGGTCTGGAGATAAGGAAGAGAAAACATCATAAAACCTCAGACAA
GCACAGA

ACGCGTACGCGGCCGCTCGAG - GFP Tag - GTTTAA

Protein Sequence:

>MG214787 representing NM_001166581
 Red=Cloning site Green=Tags(s)

MAMTSTTVVPAEWIKTWEKSGRGEFLRLCRILSESKSRDTFAWRDFQQALYELSYHVIKGTLPKEQASN
 VLNDISEFREDIPFILADIFCILDINETNLEEKSKRDHFTQLILACLVLVSDTVLKERLDPETLGSGLI
 KQSQQFNQKSVKIKTKLFYKQKFNLLREENEGYAKLIVELGQDLSGNITSDLILEILKSLIGCFNLDPN
 RVLDIILEVFECRPEHHDFIISLLEAYMSMCEPHTLCHILGFKFKFYQEPNGETPSSLYRAAAVLLQFNL
 IDLDDLIVHLLPADSCIVSEYKREIVEAKQIVKCLTMVVLPEKSDEREKEKKKDDKVEKAPDNQKLG
 EALLIIGDWKHAQSIMDHMPYYATSHKVIALAI CNL IHTIEPIYRRVGVPGAKGSPVNALQNKKAPK
 QAESFEDLRRDVF SMFYLGPHLSDHPILFAKVVIRIGKSFMKEFQSDGKQENKEKMEAILSCLLSVTDQV
 LLPSLSLMDCNACMSEELWGMFKTFPYQHRYRLYGQWKNETYN SHPLLKVKAYTIDRAKYIMKRLTKEN
 VKPSGRQIGKLSHNPITILFDYILSQIKYDNLITPVVDSLKYLTA LNYDVLAYCIEALANPEKERMKH
 DDTTISNWLQSLASFCGAVFRKYPIDLAGLLQYVANQLKAGKSFDLLILKEVVQKMAGIEVTEEMTMEQL
 EAMTGGEQLKAEAGYFGQIRNTKSSQRLKDALLDHDALPLCLLMAQQRNGVIFQEGGEKHLKLVGKLY
 DQCHDTLVQFGGFLASNLSTDDYIKRVPSIDVLCNEFHTPHDAAF LSRPMYAHHISSKYDELKSEKGS
 KQQHKVHKYIMSCMV MAPVHEAVVSLHISKVWDDISPQFYTFWSLTMYDLAVPHTSYEREVNLKIQM
 KAVDDSQEMPLNKKKKEKERCTALQDKLLEEEKQTEHVQVLRHLKLEKDNWLLAKSTKNETITKFLQL
 CIFPRCIFSAIDSVYCAHFVELVHQKTPNFSTLLCYDRVFSDIIMVYASFTENEASRYGRFLCCMLETV
 TRWHSRSTYEKECGNYPGFLTILRATGFDGGNKADQLDYENFRHVHWHYKLTAKSVHCLTGEYTHI
 RNILIVLTKILPWYPKVLNLGQALERRVHKICQEEKEKPKDLYALAMVYSGQLKSRKSYMIPENEFHHD
 PPRNTATNLQPSGPGSLPSSIGSMCKLDESSAEEADKSRERAQCAVKAANKASSVTPKGNLSNGSGS
 NSKAVKENDKEKGEKEKEKEKTPAVTPEARVLGKDSKEKPKKEQPNKDEKIREAKERMPKSDKDEKEL
 KKEEKAKDEKFRIIVANVESKSTQEREKEKEPSKERDLAKEMKSKENKVGGEKAPVSGSLKSPISRTDIT
 EPEREKRRKVD SHSPSHSSTIKDSL VKLKESSAKLYINHIPP LCKSKEREADKDLDKSRERSREREK
 KEEKDRKERKRDYSNNDREAPLDLIKRRKDENGILGVSKHKSESPCESLYPNEKDKEMKSKSSGKEKGD
 SFKPEKIDKISSGKKEGHDKEKIEKKEKWDGSGDKEEKHHKTSDKHR

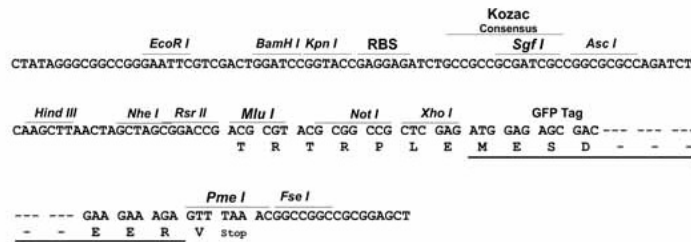
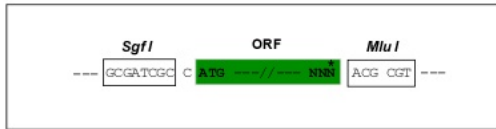
TRTRPLE - GFP Tag - V

Restriction Sites:

SgfI-MluI

Cloning Scheme:

Cloning sites used for ORF Shuttling:



ACCN:

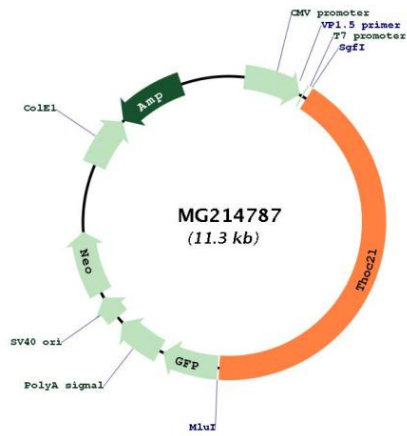
NM_001166581

ORF Size:

4767 bp

OTI Disclaimer:	The molecular sequence of this clone aligns with the gene accession number as a point of reference only. However, individual transcript sequences of the same gene can differ through naturally occurring variations (e.g. polymorphisms), each with its own valid existence. This clone is substantially in agreement with the reference, but a complete review of all prevailing variants is recommended prior to use. More info
OTI Annotation:	This clone was engineered to express the complete ORF with an expression tag. Expression varies depending on the nature of the gene.
Components:	The ORF clone is ion-exchange column purified and shipped in a 2D barcoded Matrix tube containing 10ug of transfection-ready, dried plasmid DNA (reconstitute with 100 ul of water).
Reconstitution Method:	<ol style="list-style-type: none">1. Centrifuge at 5,000xg for 5min.2. Carefully open the tube and add 100ul of sterile water to dissolve the DNA.3. Close the tube and incubate for 10 minutes at room temperature.4. Briefly vortex the tube and then do a quick spin (less than 5000xg) to concentrate the liquid at the bottom.5. Store the suspended plasmid at -20°C. The DNA is stable for at least one year from date of shipping when stored at -20°C.
Note:	Plasmids are not sterile. For experiments where strict sterility is required, filtration with 0.22um filter is required.
RefSeq:	NM_001166581.2
RefSeq Size:	5181 bp
RefSeq ORF:	4770 bp
Locus ID:	100042165
Cytogenetics:	5 E5

Product images:



Circular map for MG214787