

## Product datasheet for **MG214786**

### **Xlr5a (NM\_001045539) Mouse Tagged ORF Clone**

#### Product data:

Product Type:	Expression Plasmids
Tag:	TurboGFP
Symbol:	Xlr5a
Synonyms:	Xlr5d
Mammalian Cell	Neomycin
Selection:	
Vector:	pCMV6-AC-GFP (PS100010)
E. coli Selection:	Ampicillin (100 ug/mL)

**ORF Nucleotide Sequence:** >MG214786 representing NM\_001045539  
Red=Cloning site Blue=ORF Green=Tags(s)

TTTTGTAATACGACTACTATAGGGCGCCGGGAATTCGTCGACTGGATCCGGTACCGAGGAGATCTGCC  
GCC**GCGATCGCC**

ATGTCAAACAAGGAACAGAAGGCCATGAAGAAAAGTGGCAAGTACCAGAGGGTACATAAGACCCTCCCAT  
CAGATGACTTCAAGAACTCAGATGAAGTTAACCCCTGCTGACAAACCAGCAGTTGGTACCAGTGGGATGGG  
CAGCCATTCTTCAGGATCAGACATGCAAGAGGCCAGGGAGCCTGTTCAGAAGAAGATGCAGGATTTCAA  
GGTGATGATGGTACAGGACTTCTTATGGAAAAGAAGAAGCAGTTTGAAGAGGATGTAATGCCTCTTTCA  
GAAGTCTGAATGAAAACCTCCAGAGCATTTTGAAGCTCAGCAGAATTCAGGCAGGAGCTTAAGTCTCT  
GTAAGTCTGAAAAGATTTGGGTCGGTGTACCAATTGGCTGGTTGAGATGGACAGAACAAGGGACCAAGAA  
GAATACTTCAGTTTATAACCCAGCAGCAAATGAAGATTTTACAGACGGCTATAGAGGACCATGAAACCA  
AGCTCAAAAACGCTAAAGATATGTGTGACACATTTTGAAGAAAGCCAACGACTTGAGTAAACGTCAAAA  
AACCTTTATTGGTGGTCAGCACAATTGTGGAGAAGGAAATCTCCAAGGTGCAGAACAGAGTAATCATG  
GAAACCCAAGATCAAGACATATCCATGTTGAAACATACCTTCAGTCCCTGATCCATGAAAGCTCTGAAG  
AAACCATC

**ACGCGTACGCGGCCGCTCGAG** - GFP Tag - GTTTAA



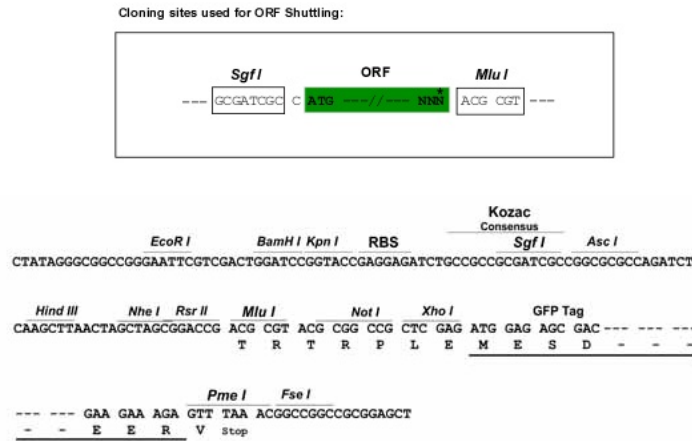
**Protein Sequence:** >MG214786 representing NM\_001045539  
 Red=Cloning site Green=Tags(s)

MSNKEQKAMKKSgKYQRVHKTLPSDDFKNSDEVNPADKPAVGTSGMGSHSSGSDMQEAREPVQKKMQDFK  
 GDDGTGLLMEKKKQFEEDVNASFRSLNENLQSILKAQQNSRQELKSLYCERFGSVYHNWL VEMDRTRDQE  
 EYFSFITQQMKILQTAIEDHETKLKNAKDMCDTFLKKANDLSKRQKTFIGGQHTIVEKEISKVQNRVIM  
 ETQDDQDISMVETYLQSLIHESSEETI

TRTRPLE - GFP Tag - V

**Restriction Sites:** SgfI-MluI

**Cloning Scheme:**



**ACCN:** NM\_001045539

**ORF Size:** 708 bp

**OTI Disclaimer:** The molecular sequence of this clone aligns with the gene accession number as a point of reference only. However, individual transcript sequences of the same gene can differ through naturally occurring variations (e.g. polymorphisms), each with its own valid existence. This clone is substantially in agreement with the reference, but a complete review of all prevailing variants is recommended prior to use. [More info](#)

**OTI Annotation:** This clone was engineered to express the complete ORF with an expression tag. Expression varies depending on the nature of the gene.

**Components:** The ORF clone is ion-exchange column purified and shipped in a 2D barcoded Matrix tube containing 10ug of transfection-ready, dried plasmid DNA (reconstitute with 100 ul of water).

**Reconstitution Method:**

1. Centrifuge at 5,000xg for 5min.
2. Carefully open the tube and add 100ul of sterile water to dissolve the DNA.
3. Close the tube and incubate for 10 minutes at room temperature.
4. Briefly vortex the tube and then do a quick spin (less than 5000xg) to concentrate the liquid at the bottom.
5. Store the suspended plasmid at -20°C. The DNA is stable for at least one year from date of shipping when stored at -20°C.

**Note:** Plasmids are not sterile. For experiments where strict sterility is required, filtration with 0.22um filter is required.

**RefSeq:** [NM\\_001045539.1](#)

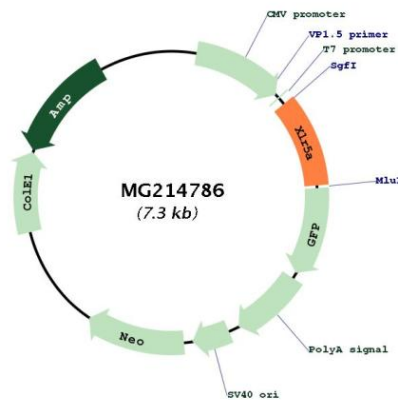
**RefSeq Size:** 1650 bp

**RefSeq ORF:** 711 bp

**Locus ID:** 574438

**Cytogenetics:** X A7.3

**Product images:**



Circular map for MG214786