

## Product datasheet for **MG214763**

### Crebrf (NM\_029870) Mouse Tagged ORF Clone

#### Product data:

Product Type:	Expression Plasmids
Product Name:	Crebrf (NM_029870) Mouse Tagged ORF Clone
Tag:	TurboGFP
Symbol:	Crebrf
Synonyms:	A930001N09Rik; LRF
Mammalian Cell Selection:	Neomycin
Vector:	pCMV6-AC-GFP (PS100010)
E. coli Selection:	Ampicillin (100 ug/mL)



[View online »](#)

**ORF Nucleotide Sequence:**

>MG214763 representing NM\_029870  
 Red=Cloning site Blue=ORF Green=Tags(s)

TTTTGTAATACGACTCACTATAGGGCGGCCGGAATTCGTCGACTGGATCCGGTACCGAGGAGATCTGCC  
 GCC**CGCATCGCC**

ATGCCTCAGCCACGCTAAGCGGAATGGACCCGCCTTTGGGGATGCCGTTCAAGCCACACCTTTTCAG  
 AACAGACTCTGATGAGCACAGATCTCTTAGCCAACAGTTCTGATCCAGATTTTCATGTATGAGCTGGATAG  
 AGAGATGAATTATCAACAGAATCTAGAGACAACCTTCTTTCTTTGGAAGACTGCAAAGACATTGAAAAT  
 CTGGAGACTTTACAGATGTCCTGGACAATGAGGATGCTTTAACTTCAAAGTGGGAACAGTGGGATACAT  
 ACTGTGAAGACTTAACTAAGTACACGAAGCTCACCAGCTGTGACATTTGGGGGACAAAAGAGGTGGATTA  
 CCTGGGTCTTGATGACTTTTCTAGCCCTTACCAAGATGAAGAGGTCATCAGTAAAACCTCAAACACTGGCC  
 CAGCTCAATAGTGAAGACTCTCAGTCTGTTCCGATTCCCTTTATTATCCTGACTCACTCTTCAGTGTCA  
 AACAAAATCCCTTGCCCCCTCCTCTTTTCTAGTAAAAAGATCACAAAATAGAGCAGCTGCCCTGTGTG  
 TTCTTCAAAGACTTTCAGGCTGAGGTCCCATCATCAGACTGTGTCCAAAAGCAAGCAAACCTACTTCA  
 AGCACACAGATCATGGTGAAGACCAACATGTATCATAATGAAAAGGTGAATTTTCATGTTGAATGTAAG  
 ACTATGTAAAAAAGCAAAGTCAAGATCAACCCTGTGCAACAGGGCCGCCCCTTGTGAGCCAGGTCCA  
 CATAGATGCAGCAAAGGAGAACCTGCTACTGTGGAGCTGTGGCAAAGAGACAGGAGAGAAGGGGGGTG  
 GAGCCGCATCAGGGTCGGGGCACTCCTGCTTTGCCTTTCAAAGAAACCCAGGAGCTATTACTTAGTCCTC  
 TGACGCAGGATAGTCTGGGTTGGTTGCCACAGCAGAGAGTGGCAGCCTTTCTGCCAGCACTTCTGTTTC  
 AGATTCATCCCAGAAAAAAGAAGAGCACAAATTATCTCTTTTGTCTCTGACAACATGAGAGAACAGCCA  
 ACCAAAACAGTCTGAAGATGATGAGGATGATGAAGTGAAGTTGATGATGAGGACCATGATGAAGGTT  
 TTGGCAGCGAGCATGAGCTTTCTGAAAATGAAGAGGAGGAAGAAGAGGAAGAGGATTATGAGGATGACAG  
 AGATGATGATATCAGCGACAGTCTCTGAAACAGGTTATGAAAATGACTCTGTAGAGGACTTGAAGGAG  
 ATGACGTCATATCTTCTCGAAGAGAGGAAAAAAGGTAAGTACTTCTGGGAGTATAGTGAAGCAGCTTACAC  
 CATCACAGCAAGAGAGGATTCTGAGGCCTTCTGAGTGAATCGAGATACCTTGCCAAAGTAATATGTACCA  
 GAAAAATGGCTTACATCATGGGAAATACGCAGTGAAGAAATCACGGAGAAGTGTGGAAGACCTTACT  
 CCAAACCTAAAAAACTACTTCAAGATTGGTAATGAGCTGCGCAAGCTGAATAAGGTGATCAGTGACCTGA  
 CTCCAGTTAGTGAGCTTCCCTAACAGCAAGGCCAAGTCAAGGAAAGAAAAAATAAGTGGCATCCAG  
 AGCTTGTAGGCTAAAGAAGAAAGCCAGTATGAAGCTAATAAAGTGAAGTTGTGGGGCTCAACACTGAA  
 TATGACAATTTATGTTTGAATCAACTCCATCAAGCAAGACATTGTAACCGAGTTCAGAAATCCAAGAG  
 AAGAGAGAGAACCAGCATGGGGCAGAAGCTTGAATCCTCATTAAAGATACACTGGGTCTCCAGTCGC  
 TGGGCAAACCTCAGAATTTGTTAACCAAGTGTAGGGAAGACTGTGAAGGCAACCCCACTGGAGGCCTT  
 GTAGGACTAAGGATACCAGCATCAAAGTG

**ACGCGT**ACGCGGCCGCTCGAG – GFP Tag – GTTTAA

**Protein Sequence:**

>MG214763 representing NM\_029870  
 Red=Cloning site Green=Tags(s)

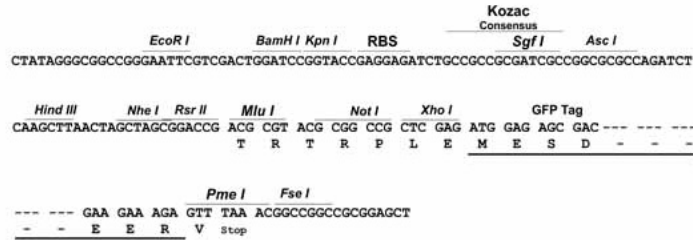
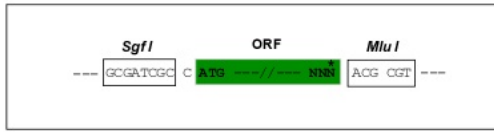
MPQPSVSGMDPPFGDAVRSHTFSEQTLMSTDLLANSSDPDFMYELDREMNYQQNPRDNFLSLEDCKDIEN  
 LETFTDVLDNEDALTSNWEQWDYCEDLTKYTKLTSCDIWTKEVDYLGDDFSSPYQDEEVIKSTPTLA  
 QLNSDSQVSVDLSLYPDSLFSVKQNPLPPSSFPSSKITTNRAAAPVCSSKTLQAEVPSSDCVQKASKPTS  
 STQIMVKTNMYHNEKVNHFHVECKDYVKKAKVKINPVQQRPLLQVHIDAAKENTCYCGAVAKRQERRGV  
 EPHQGRGTPALPFKETQELLLSPLTQDSPGLVATAESGSLSASTSVSDSSQKKEEHNYSLFVSDNMREQP  
 TKYSPEDDEDEDEFDDEHDHDEFGSEHELSENEEEEEEDYEDDRDDDISDTFSEPGYENDSVEDLKE  
 MTSISSRKRGRRYFWEYSEQLTPSQERILRPSEWNRDTPSNMYQKNGLHHGKYAVKKSRRDVEDLT  
 PNPKLLQIGNELRKLNKVISDLTPVSELPLTARPRSRKEKNKLASRACRLKKAQYANKVKLWGLNTE  
 YDNLLFVINSIKQDIVNRVQNPREEERESMGQKLEILIKDTLGLPVAGQTSEFVNQVLGKTAEGNPTGGL  
 VGLRIPASKV

**TRTRPLE** – GFP Tag – V

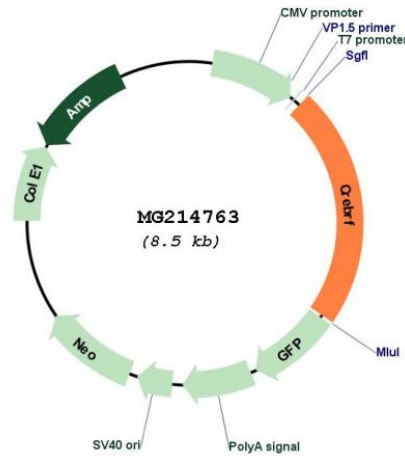
Restriction Sites: SgfI-MluI

Cloning Scheme:

Cloning sites used for ORF Shutting:



Plasmid Map:



ACCN: NM\_029870

ORF Size: 1920 bp

<b>OTI Disclaimer:</b>	The molecular sequence of this clone aligns with the gene accession number as a point of reference only. However, individual transcript sequences of the same gene can differ through naturally occurring variations (e.g. polymorphisms), each with its own valid existence. This clone is substantially in agreement with the reference, but a complete review of all prevailing variants is recommended prior to use. <a href="#">More info</a>
<b>OTI Annotation:</b>	This clone was engineered to express the complete ORF with an expression tag. Expression varies depending on the nature of the gene.
<b>Components:</b>	The ORF clone is ion-exchange column purified and shipped in a 2D barcoded Matrix tube containing 10ug of transfection-ready, dried plasmid DNA (reconstitute with 100 ul of water).
<b>Reconstitution Method:</b>	<ol style="list-style-type: none"><li>1. Centrifuge at 5,000xg for 5min.</li><li>2. Carefully open the tube and add 100ul of sterile water to dissolve the DNA.</li><li>3. Close the tube and incubate for 10 minutes at room temperature.</li><li>4. Briefly vortex the tube and then do a quick spin (less than 5000xg) to concentrate the liquid at the bottom.</li><li>5. Store the suspended plasmid at -20°C. The DNA is stable for at least one year from date of shipping when stored at -20°C.</li></ol>
<b>RefSeq:</b>	<a href="#">NM_029870.2</a> , <a href="#">NP_084146.1</a>
<b>RefSeq Size:</b>	7455 bp
<b>RefSeq ORF:</b>	1923 bp
<b>Locus ID:</b>	77128
<b>UniProt ID:</b>	<a href="#">Q8CDG5</a>
<b>Cytogenetics:</b>	17 A3.3
<b>Gene Summary:</b>	Acts as a negative regulator of the endoplasmic reticulum stress response or unfolded protein response (UPR). Represses the transcriptional activity of CREB3 during the UPR. Recruits CREB3 into nuclear foci (By similarity).[UniProtKB/Swiss-Prot Function]