

Product datasheet for **MG214734**

Adgrf2 (NM_001033493) Mouse Tagged ORF Clone

Product data:

Product Type:	Expression Plasmids
Tag:	TurboGFP
Symbol:	Adgrf2
Synonyms:	Gpr111; PGR20
Mammalian Cell Selection:	Neomycin
Vector:	pCMV6-AC-GFP (PS100010)
E. coli Selection:	Ampicillin (100 ug/mL)



ORF Nucleotide Sequence: >MG214734 representing NM_001033493
 Red=Cloning site Blue=ORF Green=Tags(s)

TTTTGTAATACGACTCACTATAGGGCGCCGGGAATTCGTGACTGGATCCGGTACCGAGGAGATCTGCC
 GCCGCGATCGCC

ATGATTCCTGCCATTGGTTGACTGTTTGATGCTTCTTTGCCTATAGAATCCTGTAGGATATTATGCC
 AGGCCTCCAGCAAAGCAAGGAGAAGGTGACATCCAGACCACATGATGTCTGTGATGGTGTCTGTAATAA
 CAATGGCACCCCTGCTTTCACTCTTGTCTCCAGACAGTGAGGGCAACATGAAATTTGCCTGTAAGGCC
 AAGAAATGGCACAAGTCACTGAAACCTGCCACACTCTCAATACCCACAGCATCTTTGAGGAGGATAAGG
 AACTATATTCAGTTCAATCATCTGATCAACCATACGTACACACATGTTTCATAGAGAACTAAAACCAT
 AATGGATACGTTGATGGAAAAGTGTCCAAAGGATTTGTCTTGTGATCAAAGGCATTGAGAGATCTCCT
 CGGATGCCAGGGAACATTGCTGTGGTGGTGCAGCTCTTACACAACATCTCAACAACCTAAACCAAAGACG
 TCAATGAGGAAAAGATGCAGAGTTACAGTGCCATGGCTAACACATTCTAACAGTAAAAGCATATCAAA
 TTGGACCTTCAAGACAGAAACAGCAGCTGTGCTTCAATCAATCCATTCATTTGCAAGCAAG
 CTATTTATGAAGGAACATCTCATCAACATATCAGATGCTTTATTATACCTTTGGGGACGGTCTGTCCA
 GGGGCAGCCTTGGGAAGAAATTTACGTTCTCAATGCGAATTAATGAGACAAGTGATAAGGTCACTGGGAG
 GCTACTGCTCAGCCCTGAAGAGCTTCAAGAGTGCCTTCTGCTTTCCAGGTCATCAGCATTGCTTTCCCA
 ACTCTTGGGGCCATCCTGGAGGCCAGTCTTTGGAAAATGTGACTGTGAATGGGCTCGTCTGTCTGTCA
 TTTTGGCCGAGGAGCTTAAAAACATCTCACTGATTTTGAAGATCAGAAAACTCGGAGAGAGGAAGTC
 CCAAGTGTGGGATGGCACTCCTTGGAGAGCAGATGGGACCGAGGGCTTGTAAAACGATTCAAGAAAAC
 TCCAGGCAAGCTGTTGCCGTTGTCGGCCGAATAAGTTATATACTTCTTCTCCATTCTAATGTCTCCCA
 ACACGTTGGAAGCCCTGTTCTAATTATATTACATACATAGGCCCTGGGCATTTCCATCTGCAGCTTGAT
 CATCTGCCTGGCCATTGAGGCTTAGTCTGGAGTCAAGTGACAAAGACAGAGATCTCATATTTACGTCAC
 CTGTGCATCGCTAACATTGCGGCCACCTTGTGATGGCTGATGCGTGGTTCATCGTGGCGTCTTTCTCA
 GTGGCCCACTACTACACCACAATGGATGTGTGGCCGCCAGTTTTTTTGTTCACTTCTTTTACCTGTCCGT
 GTTTTTCTGGATGCTTGCCAAGGCTCTCCTATCCTCTATGGAATCTCATTGTGTTTCATACACTGCC
 AAGTCGTGCCTGGTGGCCTCTCTGTTTTCCGTGGGCTATGGGTGCCCTTGGTTCATCGCCATTATCACAC
 TTGCCGTTACAGAGCCTGGAAGGCTACCTCCGGCCGAGGCTGCTGGCTTAATTGGGACATGACCAA
 GGCTCTCCTGGCCTTTGTAGTACCAGCTCTGGCCATTGTTGTAGTAAACCTGATTACAGTACAATGGTC
 ATCATCAAGACCCAGAGAGCTGCCATCGGTAGTCCATGTTCCAGGAAGTAAGGCCATCGTGAGGATCT
 GTAAGAACATTGCCATCCTCACCACTGCTGGGGCTGACCTGGGGATTGGGATAGCCACAGTCATTA
 TGGTCACTCCCTGGCCTTCCACATTATCTTCTCCTTACTCAATGCACTCCAGGTAAGTCCGGATGCTGCA
 GTAGACTCTGAATTGAGAGAGTGTGTGCATCGTTTTGTGGG

ACGCGTACGCGCCGCTCGAG - GFP Tag - GTTTAA

Protein Sequence: >MG214734 representing NM_001033493
 Red=Cloning site Green=Tags(s)

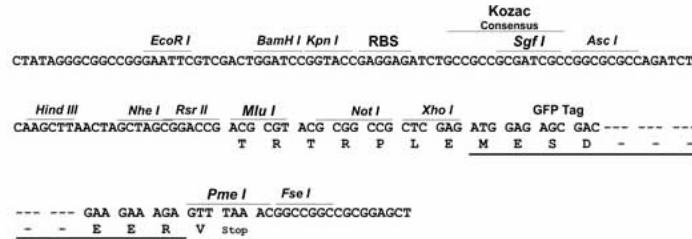
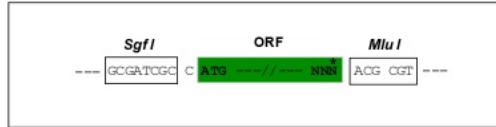
MIPAHWL YCLMLLLPIESCRILCQASSKSKEKVTSRPHDVCDGVCNNNGTPCFQSCPPDSEGNMKFACKA
 KKWHKVTETCHTLNTHSIFEEDKELYSVQSSDSTIRTHMHFRELKTIMDTLMEKCPKDLSCVIKGIERSP
 RMPGNI AVVVQLLNHISTTLTKDVNEEKMQSYSAMANHILNSKISINWTFIQDRNSSCVLLQSIHFSASK
 LFMKEHLINISHVFIHTLGTVVSRGSLGKNFTFSMRINETSDKVTGRLLL SPEELQKVPSAFQVISIAFP
 TLGAIL EASLLENVTVNLVLSVILPEELKNISLIFEKIRKSGERKSQC VGWHSLESRWDRRACKTIQEN
 SRQAVCRCPNKLYTFSILMSPNTLESPVLT YITYIGLGISICSLIIICLAI EIVLVWSQVTKTEISYLRH
 LCIANIAATLLMADAWFIVASFSGPVLHHNGCVAATFFVHFFYLSVFFWMLAKALLILY GILIVFHTLP
 KSLVASLFSVGYGCPLVIAIITLAVTEPGKGYLRPEACWLNWDMTKALLAFVVPALAI VVVNLITVTMV
 IIKTQRAAIGSSMFQEVRAIVRICKNIAILTPLLGLTWGFGIATVINGHSLAFHIIIFSLLNALQVSPDAA
 VDSELRECVHRFCG

TRTRPLE - GFP Tag - V

Restriction Sites: SgfI-MluI

Cloning Scheme:

Cloning sites used for ORF Shutting:


ACCN: NM_001033493

ORF Size: 1932 bp

OTI Disclaimer: Due to the inherent nature of this plasmid, standard methods to replicate additional amounts of DNA in E. coli are highly likely to result in mutations and/or rearrangements. Therefore, OriGene does not guarantee the capability to replicate this plasmid DNA. Additional amounts of DNA can be purchased from OriGene with batch-specific, full-sequence verification at a reduced cost. Please contact our customer care team at custsupport@origene.com or by calling 301.340.3188 option 3 for pricing and delivery.

The molecular sequence of this clone aligns with the gene accession number as a point of reference only. However, individual transcript sequences of the same gene can differ through naturally occurring variations (e.g. polymorphisms), each with its own valid existence. This clone is substantially in agreement with the reference, but a complete review of all prevailing variants is recommended prior to use. [More info](#)

OTI Annotation: This clone was engineered to express the complete ORF with an expression tag. Expression varies depending on the nature of the gene.

Components: The ORF clone is ion-exchange column purified and shipped in a 2D barcoded Matrix tube containing 10ug of transfection-ready, dried plasmid DNA (reconstitute with 100 ul of water).

Reconstitution Method:

1. Centrifuge at 5,000xg for 5min.
2. Carefully open the tube and add 100ul of sterile water to dissolve the DNA.
3. Close the tube and incubate for 10 minutes at room temperature.
4. Briefly vortex the tube and then do a quick spin (less than 5000xg) to concentrate the liquid at the bottom.
5. Store the suspended plasmid at -20°C. The DNA is stable for at least one year from date of shipping when stored at -20°C.

Note: Plasmids are not sterile. For experiments where strict sterility is required, filtration with 0.22um filter is required.

RefSeq: [NM_001033493.2](#), [NP_001028665.2](#)

RefSeq Size: 3283 bp

RefSeq ORF: 1935 bp

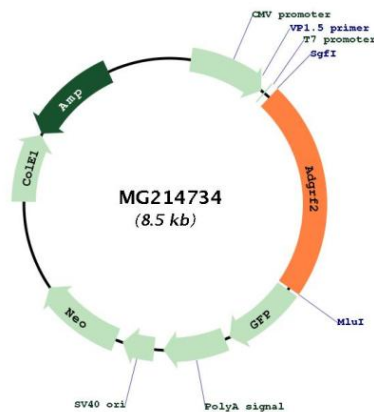
Locus ID: 435529

UniProt ID: [E9Q4J9](#)

Cytogenetics: 17 B3

Gene Summary: Orphan receptor.[UniProtKB/Swiss-Prot Function]

Product images:



Circular map for MG214734